

# Corporate Performance & Scrutiny Group

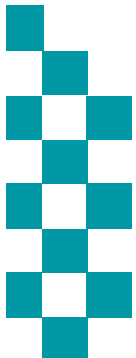


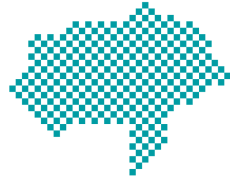
Meeting: 27 September 2016

Reporting Period: April – August 2016

NB: Statistics remain provisional and subject to change

**BE SAFE**  
**FEEL SAFE**





# INTRODUCTION



**Reporting Period: Apr – August 2016**

Contents:

- The Results: Current Performance levels
  1. Headline overview statistics
  2. Crimes & ASB statistics (including stats by District council area)
  3. Road Traffic Collision casualties
- The People: HR/headcount information

Recommendations:

- The Group notes the contents and current position

Actions arising from this meeting in response to scrutiny:

- 

Glossary of Terms

- Please see final page in document

Time Periods

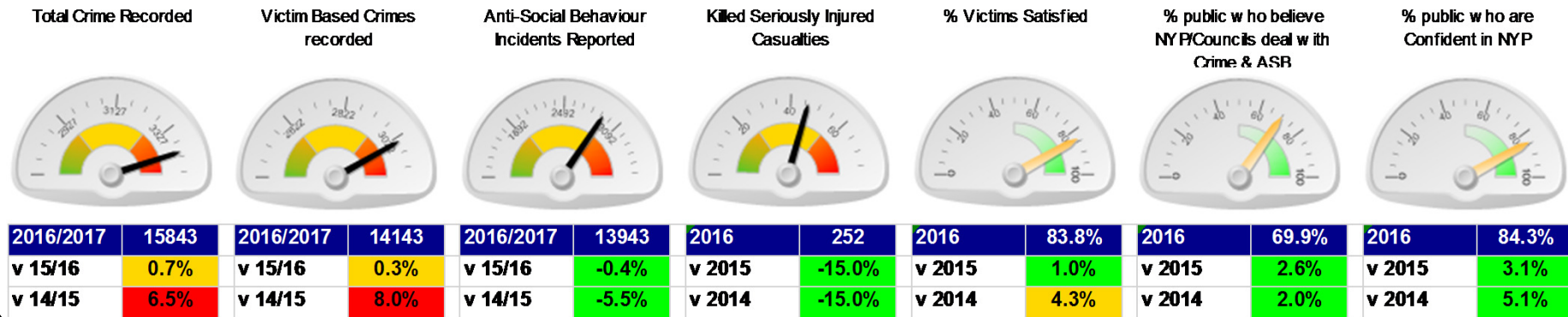
- Unless indicated otherwise statistics are presented by financial year

Performance Monitoring/Management and Operational Priorities

- At a strategic level this meeting (The Corporate Performance & Scrutiny Group) and Executive Board consider performance in the broader context of financial and people data and consider progress against the delivery of the Police and Crime Plan
- The force runs its Tactical Tasking & Co-ordination Group (TTCG) meeting on a 3 month cycle rather than monthly. This meeting looks at predicted operational matters some 3 to 6 months in the future. Local TTCG meetings also run quarterly
- The Performance Steering Group now sits with the Operational Delivery Board meeting which also monitors progress against business plans and activity around HMIC inspections

# EXECUTIVE SUMMARY

## August 2016 Dashboard



### Summarised commentary on current trends

#### Crime & ASB

- NYP has one of the lowest crime rates per 1000 population in England
- Crime and ASB are in line with last year
- Summer represents a period of increased demand in comparison to other times of the year and operational plans are in place to respond
- NYP is currently seeing low volumes of thefts, and non dwelling burglaries, and command areas have reported several notable arrests.
- During August there was a series of caravan burglaries in Scarborough, and a number of burglaries where access was gained through insecure windows or doors..

#### Killed Seriously Injured (KSI) casualties

- Long term downward trend. Provisional figures show a reduction in KSIs.

#### Satisfaction

- Satisfaction remains high with more than 8 in 10 victims satisfied with service.

#### Public Confidence

- The latest data show 84.3% of the public are confident in NYP which is up by 7% from two years ago.
- For public confidence measures NYP performs well compared to similar forces and national averages.
- The next round of **Performance Conferences** chaired by ACC Lisa Winward are underway. Most recently Scarborough Command was held on 2<sup>nd</sup> August, with City Command scheduled for October. These conferences allow a more detailed assessment of localised trends.

## DEMAND v PREVIOUS YEARS VOLUME CHANGE

RECORDED CRIME STATISTICS		2014/15	2015/16	2016/17	Diff 16/17 v 15/16		Diff 16/17 v 14/15		Trend
Victim Based	Arson & Criminal Damage	2120	2495	2374	-121	-4.8%	254	12.0%	
	Burglary: Burglary Dwelling	630	602	649	47	7.8%	19	3.0%	
	Burglary: Burglary Non Dwelling	1084	1069	855	-214	-20.0%	-229	-21.1%	
	Robbery	60	74	64	-10	-13.5%	4	6.7%	
	Sexual Offences: Other	308	333	415	82	24.6%	107	34.7%	
	Sexual Offences: Rape	118	167	178	11	6.6%	60	50.8%	
	Theft: All Other Theft	2297	2115	1981	-134	-6.3%	-316	-13.8%	
	Theft: Bicycle Theft	601	581	638	57	9.8%	37	6.2%	
	Theft: Shoplifting	1681	1763	1812	49	2.8%	131	7.8%	
	Theft: Theft From Person	240	198	198	0	0.0%	-42	-17.5%	
	Vehicle Offences	920	929	927	-2	-0.2%	7	0.8%	
	Violence: Violence With Injury	1684	2030	2012	-18	-0.9%	328	19.5%	
	Violence: Violence Without Injury	1352	1737	2040	303	17.4%	688	50.9%	
<b>Total</b>	<b>13095</b>	<b>14093</b>	<b>14143</b>	<b>50</b>	<b>0.4%</b>	<b>1048</b>	<b>8.0%</b>		
Crimes Against Society	Drugs: Possession Of Drugs	795	685	579	-106	-15.5%	-216	-27.2%	
	Drugs: Trafficking Of Drugs	122	109	133	24	22.0%	11	9.0%	
	Misc Crimes Against Society	212	194	271	77	39.7%	59	27.8%	
	Possession Of Weapons	101	67	92	25	37.3%	-9	-8.9%	
	Public Order Offences	546	580	625	45	7.8%	79	14.5%	
	<b>Total</b>	<b>1776</b>	<b>1635</b>	<b>1700</b>	<b>65</b>	<b>4.0%</b>	<b>-76</b>	<b>-4.3%</b>	
<b>Total</b>	<b>14871</b>	<b>15728</b>	<b>15843</b>	<b>115</b>	<b>0.7%</b>	<b>972</b>	<b>6.5%</b>		

### Slide Summary

This slide shows **volume change** across the last 3 years.

### Victim Based Crime

- is in line with last year.
- The reductions in Burglary Non Dwelling and All Other Theft should be noted.
- Rises in Violence without injury is strongly influenced by changes in recording practices

### Anti-Social Behaviour

- is in line with last year

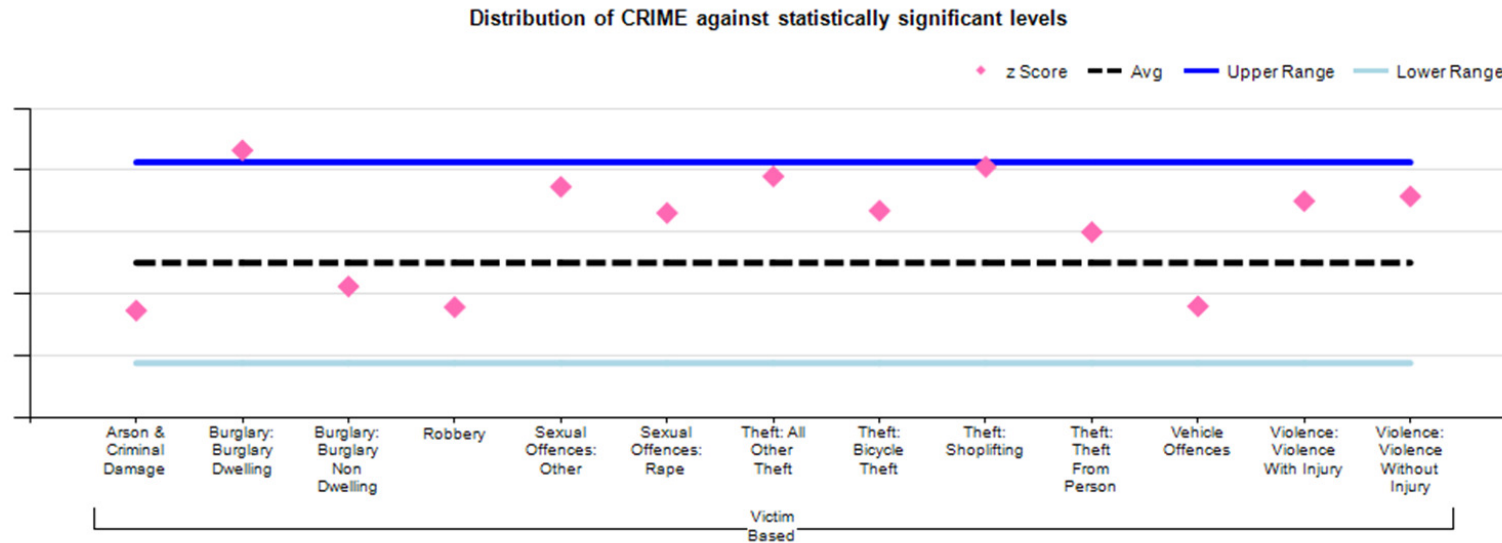
### Public Safety & Welfare

- is up on last two years – this is linked to the recording of Safeguarding and Info sharing data as a PSW incident .

NON CRIME STATISTICS		2014/15	2015/16	2016/17	Diff 16/17 v 15/16		Diff 16/17 v 14/15		Trend
ASB	<b>Total</b>	<b>14755</b>	<b>13993</b>	<b>13943</b>	<b>-50</b>	<b>-0.4%</b>	<b>-812</b>	<b>-5.5%</b>	
PSW	<b>Total</b>	<b>32266</b>	<b>33063</b>	<b>34278</b>	<b>1215</b>	<b>3.7%</b>	<b>2012</b>	<b>6.2%</b>	

## FORCEWIDE EXCEPTION BANDING: VICTIM BASED CRIME

◆ Represents Crime levels recorded in the last month , Data is normalised to allow crime groups with different volumes (e.g. robbery and criminal damage) to be presented on same graph. Crime levels can be described as normal if they fall between the blue lines with movement in this range likely to be random fluctuations.



This slide considers the current month in the context of statistically significant variations in crime levels. Those crimes which sit above the dark blue line ( highlighting higher than usual demand) are summarised below - these are considered in more detail at the monthly Operations Board and command Performance Conferences.

### *Burglary Dwelling*

- Spike in crime volume in August
  - Impact of a series of x11 caravan burglaries in one night in Scarborough where awnings were slashed to gain entry.
  - August also showed a higher than usual number of “Attempt” burglaries , often these have been where alarms have sounded of the offender has been disturbed
  - Other burglary themes show access via insecure windows and doors as is expected in the warmer weather.
- From a volume point of view August 2015 was an unusually low month compared with average and as such the spike in August has moved NYP’s year to date position from being -4 at the end of July to -47 at the end of August.

Long term NYP trends of note remains:: “Other” Sexual Offences and Violence Without Injury. Please refer to previous performance reports such as August 2016 (<http://www.northyorkshire-pcc.gov.uk/content/uploads/2016/07/10i-Performance-Report-April-to-July-2016.pdf>) for further details

## NYP'S TACTICAL RESPONSE

	Property Crime (theft & damage)	Crimes against the Person (NB: Crime increases strongly linked to improved recording practices)
Crav Hamb Rich Hgte	<ul style="list-style-type: none"> <li>•<b>Op HAVEN</b> – County burglaries. Specialist ops have been involved in proactivity in County over the last month, concentrating on the Southern border of Harrogate area around Pool Bridge, and the A66 and A1 borders in Richmondshire as well as the Skipton area of Craven.</li> <li>•<b>Op HAWK</b> – Craven burglaries and burglary other incidents, especially around the A65 corridor were a priority for specialist ops.</li> <li>•<b>Op FEROX</b> and <b>Op CHECKPOINT</b> – rural crime in Hamb/Rich. Specialist ops carried out proactive work in the area of the A66 corridor as well as the Thirsk and Richmond areas.</li> </ul>	<ul style="list-style-type: none"> <li>•<b>Op VAST</b> Targeted work on hotspots for vulnerability in Harrogate Town Centre focusing on young persons, the homeless and those subject to child sexual</li> </ul>
Scarb Ryed	<ul style="list-style-type: none"> <li>•<b>Op SHUDDER</b> . Targets x border criminality for burglary &amp; theft in rural areas. Support from specialist units. Tactics include proactive stop checks . Outcome: Arrests made including one person charged with 13 offences &amp; remanded</li> <li><b>Op HAWK</b> – regular deployments.</li> <li><b>Op AMBIENCE</b> in Castle &amp; North Bay. Multi agency op targeting areas of town where vulnerable children &amp; adults have been identified &amp; supported. Homeless people located &amp; supported, street drinking addressed &amp; drug dealing identified &amp; subsequently targeted by police</li> <li><b>Op Wipeout</b> – reducing shoplifting in Scarborough Town Centre. Consists of various facets including patrol strategy, target hardening and partnership working.</li> </ul>	<ul style="list-style-type: none"> <li>•Operation to respond to Domestic Abuse at peak reporting times e.g. weekend and sporting events, with uniform and specialist resource working to effectively support the victim and deal positively with suspects.</li> <li><b>Op TAUT</b> proactive op targeting drug related violence in Scarborough.</li> <li><b>Op SIKA</b> Filey, Whitby &amp; Ryedale on Sat nights</li> <li><b>Op FOXTROT</b> is a Trading Standards operation which is focussing on persons suspected of targeting elderly people</li> </ul>
York Selby	<ul style="list-style-type: none"> <li>•<b>Op Hawk &amp; Op Jellyfish</b> – Crime prevention advice being tailored to remind home owners again of the vulnerability of this locking system particularly with addresses with high performance Audi's or VW's.</li> <li>•<b>Dot Peen</b> continues to get deployed including Sherburn Fair.</li> <li>•<b>Rural watch patrols</b> continue to support rural crime and sus circs incidents.</li> <li>•<b>Engagement and reassurance continues</b> through route 4 u, social media, community messenger and media.</li> <li>•<b>Op JoyPad</b> has checked over 16000 addresses and identified 8% insecure</li> </ul>	<ul style="list-style-type: none"> <li>•<b>Op ERASE</b> continues working with <b>British Transport Police</b> &amp; train companies. <b>Op SAFARI</b> continues</li> <li>•<b>Partnership working</b> and relationship with licensee's, security, Nightsafe, Street Angels, Safer York Partnership</li> <li>•<b>OP LIBERATE</b> multi agency operation targeting on protecting vulnerable youths and preventing/ suppressing ASB. NYP are working closely with CYC, Lifeline, NHS, SARC and other charity organisations to provide holistic support to individuals and communities. LIBERATE is complimented by OP RAPPORT which is an educational package provided to bus and taxi drivers around <b>CSE and vulnerability</b>.</li> </ul>

# NYP'S TACTICAL RESPONSE

## ***Rural Crime Task Force***

- **Prevention** – Follow up visits by PCSO's to victims of crime, or those at risk of becoming a victim; several preventative marking events including a scheme to incorporate rural sports clubs; roll out of Horse Watch scheme across force, Heritage Watch planned for September launch
- **Enforcement** – Arrest of principle member of Op Wilderness OCG for quad theft; arrest and subsequent charge of man for 12 heritage crimes in Craven area; 3 offenders arrested for quad theft in Craven; 4 males arrested for tarmac type fraud with Trading Standard in Whitby area; 2 further Cleveland nominals arrested for farm burglary in Hambleton. Further proactive patrols planned around poaching (Galileo, Traverse), cross border criminality (Hawk, Checkpoint), as well as other intelligence led patrols identified by areas.
- **Engagement / Reassurance** – Kilnsey, Gargrave, Muker, Stokesley shows , and sales at Leyburn, Murton, Hawes, Thirsk, engaging with community members and offering preventative advice; Rural Taskforce Roadshows at Ripon Farm Services planned throughout October until December; campaign to call in suspicious incidents soon to be launched by Corporate Comms

## ***Operation Hawk***

- Op Hawk is an NYP initiative to tackle travelling criminality and rural crime with the emphasis on the patrolling of our borders and targeting of vehicles and persons involved in criminal activities. In August, the RCT have arrested 9 offenders, recovered 11 vehicles and seized property to the value of £57,500 (Inc. Drugs, cash and stolen vehicles). The NRCT have had over 10 arrests and , seized vehicles and property to over the value of £20,000. Of note:
  - Pursuit and arrest of nominals wanted for a 2 in 1 burglary in West Yorkshire
  - Stop of vehicle linked to 15 x Make Off W/out Payment from fuel stations across the Yorkshire region following an ANPR hit
  - Arrests for possession of controlled drugs and fraud offences.
- While not committed with their primary roles RPG/FSU/Dogs deploy onto Op Hawk as well as supporting local policing, successes include:
  - RPG and FSU were deployed to a 2in1 Burglary in Boroughbridge. A vehicle was stopped 4 x persons from Cumbria were arrested.
  - After a report of a male with a 10inch knife at Bolton Abbey, FSU attended and after an area search a male and female were located. The male was found to have a machete tucked into his belt and was arrested for possession of a bladed article.
  - The FSU, RPG and Dogs respond to a ANPR sighting of a SMV from a 2in1 in West Yorkshire, the vehicle was located and a pursuit followed. 5 occupants of the vehicle made off. A area containment was put in place resulting in all 5 occupants being arrested.

## ***Operation Checkpoint***

- There have been 2 x Checkpoint days carried out so far this year, there is a further multi force operation taking place on the 5th October 2016, whereby Local officers along with Farm watch and NYP officers from the NARCT, Rural Task Force, RPG, FSU, Dog section and the NST in carrying out cross border patrols.

## ***Other Operations***

- **A Multi Agency Op York** – 6 vehicles seized by DVLA- no VEL, 32 referrals by HMRC for person failing to declare tax whilst working, 15 waste carrier offences, 12 prohibitions for Con & use offences – VOSA and 1 x arrest.

## NOTABLE INVESTIGATIONS

### ***Op Wild***

- Reported rape York. Investigation ongoing

### ***Op Tarn***

- Serious assault in Sherburn in Elmet in December. 4 persons convicted. Two pleaded guilty to Sec 18 assault and were sentenced to 10 years imprisonment. Two pleaded guilty to Affray and received 18 month suspended sentences.

### ***Op Neutron***

- Robbery / aggravated burglary in Knaresborough – 5 x offenders from Leeds/Harrogate charged, trial set for September.

### ***Op Essence***

- Claudia LAWRENCE

### ***Op Wain – Cold Case Review***

- Murder investigation from 2005 - This case is being managed as part of the overall cold case review function of the MCU

### ***Op Woolpack***

- Rape investigation. York.

### ***Op Woodcutter***

- Attempt murder investigation. York



## VICTIM BASED CRIME BY DISTRICT v PREVIOUS YEARS

NO OF CRIMES	2016/17	
<b>HAMBLETON</b>	<b>1158</b>	
CHANGE 16/17 v 15/16	85	7.9%
CHANGE 16/17 v 14/15	164	16.5%

NO OF CRIMES	2016/17	
<b>RICHMONDSHIRE</b>	<b>584</b>	
CHANGE 16/17 v 15/16	18	3.2%
CHANGE 16/17 v 14/15	-29	-4.7%

NO OF CRIMES	2016/17	
<b>RYEDALE</b>	<b>609</b>	
CHANGE 16/17 v 15/16	-13	-2.1%
CHANGE 16/17 v 14/15	31	5.4%

NO OF CRIMES	2016/17	
<b>HARROGATE</b>	<b>2331</b>	
CHANGE 16/17 v 15/16	23	1.0%
CHANGE 16/17 v 14/15	128	5.8%

NO OF CRIMES	2016/17	
<b>SCARBOROUGH</b>	<b>2944</b>	
CHANGE 16/17 v 15/16	-23	-0.8%
CHANGE 16/17 v 14/15	208	7.6%

NO OF CRIMES	2016/17	
<b>CRAVEN</b>	<b>732</b>	
CHANGE 16/17 v 15/16	-3	-0.4%
CHANGE 16/17 v 14/15	106	16.9%

NO OF CRIMES	2016/17	
<b>YORK</b>	<b>4523</b>	
CHANGE 16/17 v 15/16	40	0.9%
CHANGE 16/17 v 14/15	410	10.0%

NO OF CRIMES	2016/17	
<b>SELBY</b>	<b>1232</b>	
CHANGE 16/17 v 15/16	-89	-6.7%
CHANGE 16/17 v 14/15	9	0.7%

• There are no localised exceptions of note for Victim Based Crime that sit outside those identified earlier in the presentation. NB: comparisons against 2014/15 are impacted by changes in recording practices.

• Scarborough Burglary Dwelling series at a Caravan park where multiple caravan awnings were slashed to gain entry

• Hambleton increases on last year (+85) is mostly linked to July v July 2015 (+76) – there is no single crime trend which caused this but rather the aggregation of smaller rises in multiple crime types in that month

• Burglary Non Dwelling and Theft remain low across the force area

The above is a presentation of year on year statistics. For latest local data displayed on a map for your area go to [www.police.uk](http://www.police.uk) and enter your postcode

## ASB BY DISTRICT v PREVIOUS YEARS

NO OF ASB	2016/17	
HAMBLETON	1137	
CHANGE 16/17 v 15/16	79	7.5%
CHANGE 16/17 v 14/15	52	4.8%

NO OF ASB	2016/17	
RICHMONDSHIRE	581	
CHANGE 16/17 v 15/16	-64	-9.9%
CHANGE 16/17 v 14/15	-62	-9.6%

NO OF ASB	2016/17	
RYEDALE	536	
CHANGE 16/17 v 15/16	4	0.8%
CHANGE 16/17 v 14/15	-6	-1.1%

NO OF ASB	2016/17	
SCARBOROUGH	3155	
CHANGE 16/17 v 15/16	-67	-2.1%
CHANGE 16/17 v 14/15	-284	-8.3%

NO OF ASB	2016/17	
HARROGATE	2310	
CHANGE 16/17 v 15/16	67	3.0%
CHANGE 16/17 v 14/15	-262	-10.2%

NO OF ASB	2016/17	
CRAVEN	586	
CHANGE 16/17 v 15/16	95	19.3%
CHANGE 16/17 v 14/15	-4	-0.7%

NO OF ASB	2016/17	
YORK	4289	
CHANGE 16/17 v 15/16	-116	-2.6%
CHANGE 16/17 v 14/15	-264	-5.8%

- ASB is in line with the previous year

- There are no significant issues to report – Craven may appear an outlier but this is the result of cumulative month on month small increases owing to low levels of ASB in the same months last year.

NO OF ASB	2016/17	
SELBY	1262	
CHANGE 16/17 v 15/16	-82	-6.1%
CHANGE 16/17 v 14/15	-10	-0.8%

## CASUALTIES KILLED OR SERIOUSLY INJURED FROM ROAD TRAFFIC COLLISIONS

		YTD	+/- Change	
Key Performance Indicator		2016	on 2015	on 2014
	<b>Killed or Seriously Injured casualties from RTCs:</b>	<b>252</b>	<b>-42 (-14%)</b>	
	<b>Motorcyclist KSI casualties from RTCs:</b>	<b>65</b>	<b>2 (3%)</b>	
	<b>Child (= &lt;16) KSI casualties from RTCs:</b>	<b>8</b>	<b>-4 (-33%)</b>	
	<b>Cyclist KSI casualties from RTCs:</b>	<b>39</b>	<b>-16 (-29%)</b>	

- Please note this is provisional data for the period 1<sup>st</sup> January to 31<sup>st</sup> July 16 .
- Long term the trend in KSIs is down. **No emerging issues of note.**
- The provisional stats show a decrease on the previous year:
  - All KSI = 20 fatal and 232 serious against 18 fatal and 276 serious in the same period in 2015.
  - Motorcycle = 4 fatal and 61 serious against 5 fatal and 58 serious in the same period in 2015.
  - Pedal cyclist = 1 fatal and 38 serious against 2 fatal and 53 serious in the same period in 2015.
  - Child KSI = 1 fatal and 7 serious against 12 serious in the same period in 2015
- latest KSI IQuanta data up to the end of Dec 2015 shows that NYP are:
  - 32 Nationally and 8 in MSF for all KSIs
  - 19 Nationally and 6 in MSF for Child KSIs,

## HR OVERVIEW

### Police Officers

	Apr 16	May 16	Jun 16	Jul 16	Aug 16	Sep 16	Oct 16	Nov 16	Dec 16	Jan 17	Feb 17	Mar 17	Apr 17
<b>Officer FTE Target</b>	<b>1400.0</b>	<b>1400.0</b>	<b>1400.0</b>	<b>1400.0</b>	<b>1400.0</b>	<b>1400.0</b>	<b>1400.0</b>	<b>1400.0</b>	<b>1400.0</b>	<b>1400.0</b>	<b>1400.0</b>	<b>1400.0</b>	<b>1400</b>
Actual/ Projected Num inc recr'ment	1330.00	1321.94	1329.63	1324.79	1346.12	1340.55							

The actual number of Officers has decreased by 5.57 FTE from the previous month.

20 Student Officers commenced with NYP on 1 August 2016.

Further intakes of officers are planned in the next financial year to meet the figure of 1400. This takes into account officers leaving the service to retire or for other reasons as well as current gaps.

### PCSO

	Apr 16	May 16	Jun 16	Jul 16	Aug 16	Sep 16	Oct 16	Nov 16	Dec 16	Jan 17	Feb 17	Mar 17	Apr 17
<b>PCSO Target FTE</b>	<b>200.0</b>	<b>200.0</b>	<b>200.0</b>	<b>200.0</b>	<b>200.0</b>	<b>200.0</b>	<b>200.0</b>	<b>200.0</b>	<b>200.0</b>	<b>200.0</b>	<b>200.0</b>	<b>200.0</b>	<b>200.0</b>
Actual/ Projected Num inc recr'ment	184.62	184.15	180.96	180.96	179.96	179.15							

The actual number of PCSO's has decreased by 0.81 FTE from the previous month.

In August 2016 a PCSO recruitment campaign was launched with the aim of reaching the target of 200 PCSO's, as set by the PCC/Chief Constable. 251 applications were received, 97 of these will progress to the assessment centre. 6 PCSO's from the holding list are due to commence 26 September 2016.

## HR OVERVIEW

### Specials

	Apr 16	May 16	Jun 16	Jul 16	Aug 16	Sep 16	Oct 16	Nov 16	Dec 16	Jan 17	Feb 17	Mar 17	Apr 17
<b>Specials Target FTE</b>	<b>286.00</b>	<b>286.00</b>	<b>286.00</b>	<b>286.00</b>	<b>286.00</b>	<b>286.00</b>	<b>286.00</b>	<b>286.00</b>	<b>286.00</b>	<b>286.00</b>	<b>286.00</b>	<b>286.00</b>	<b>286.00</b>
Actual Specials FTE	184.00	184.00	193.00	187.00	180.00	162.00							

The actual number of Special Constables has decreased by 18 from the previous month.

13 Special Constables are due to commence 3 September 2016, and a further 10 on 1 October 2016.

A new recruitment campaign for Special Constables is due to be launched in October 2016.

### Staff

	Apr 16	May 16	Jun 16	Jul 16	Aug 16	Sep 16	Oct 16	Nov 16	Dec 16	Jan 17	Feb 17	Mar 17	Apr 17
<b>Staff Budget</b>	<b>1186.65</b>	<b>1186.65</b>	<b>1186.65</b>	<b>1186.65</b>	<b>1186.65</b>	<b>1186.65</b>	<b>1186.65</b>	<b>1186.65</b>	<b>1186.65</b>	<b>1186.65</b>	<b>1186.65</b>	<b>1186.65</b>	<b>1186.65</b>
Permanent Staff FTE	911.36	897.04	895.75	904.80	881.98	890.87							
Temporary Staff FTE (not including agency)	53.80	62.41	64.59	60.82	63.15	66.79							
Agency Staff FTE	44.38	42.16	37.88	45.60	50.60	50.60							
<b>Total Staff against budget FTE</b>	<b>1009.54</b>	<b>1001.61</b>	<b>998.22</b>	<b>1011.22</b>	<b>995.73</b>	<b>1008.26</b>							

## HR OVERVIEW

The Staff Budget has been adjusted for 2016/ 2017. Police staff roles fluctuate in accordance with organisational priorities and requirements. The approach to police staff workforce profiling is to explore opportunities where flexible resources can be utilised specifically to deliver key pieces of work.

The total number of actual Staff has increased by 12.53 FTE from the previous month.

The number of agency staff has remained the same as the previous month:

18.55 x agency staff are in supernumerary posts.

32.05 x agency staff are backfill or interim postings against established posts (includes part time agency staff).

### Volunteers

	Apr 16	May 16	Jun 16	Jul 16	Aug 16	Sep 16	Oct 16	Nov 16	Dec 16	Jan 17	Feb 17	Mar 17	Apr 17
Volun- teers	241.00	238.00	231.00	231.00	241.00	242.00							

Deployment of volunteers:-

The 242 volunteers are broken down into the following roles

1 Chief Officer – Citizens in Policing

1 - Head of Volunteering

1 - Deputy Head of Volunteering

3 - Volunteer Advisors'.

35 - Front Counter Support

156 - Volunteers are Safer Neighbourhood Support

36 – Police Cadets

9 Police Cadet Leaders

# GLOSSARY

## Reading the performance data

- The numbers shows performance against the previous year
- The dashboard graphic for operational crime, ASB and KSI data is an assessment of the latest month against a normal month based on the 2015/16 reporting period. The position of the needle describes the month results relative to a linear average. This allows for factors such as seasonal trends or the impact of single one off events to be explained. As the desired direction of travel can be up or down (e.g. increasing crime is negative but an increasing resolution % positive) the graphics alternate the red/green colouring accordingly.

## Glossary

- ASB = Anti-Social Behaviour
- Crimes Against Society = These are crimes which do not have a “named victim” i.e.. the offence is against The Crown. These are usually (but not always) are as the direct result of police intervention/proactivity e.g a drugs operation. In North Yorkshire & City of York approx 10% of crimes are “Against Society” therefore it is important to make the clear distinction from Victim Based Crime.
- Fraud Offences = These are not included in the crime statistics as they are not reported by forces to the Home Office. Instead these crimes are passed to Action Fraud and statistics are collated by that agency
- I Grade = priority assigned by control room for an incident requiring ImmEDIATE police response
- KSI = A casualty Killed or Seriously Injured as a result of a Road Traffic Collision on a public road
- MCU = Major Crime Unit
- MO = Modus Operandi
- NPS = New PsychoaSive Substances is the official term for Legal Highs
- NTE = Night Time Economy
- NRCT = Northern Roads Crime Team – Roads Policing with some firearms capability
- NST = Neighbourhood Support Team – a specialist unit which is deployed around the force through tactical bidding process
- OPL = Over Prescribed Limit typically the term used to describe failing a breath test
- P&CP = Police & Crime Plan document setting out the Police & Crime Commissioner’s priorities
- PCC = Police & Crime Commissioner
- PCSO = Police Community Support Officer
- PSG = Performance Steering Group is an internal meeting chaired by a Chief Officer monitoring statistics & trends
- Resolved Outcome = A crime where an offender has been dealt with through sanction or restorative justice.
- RPG = Roads Policing Team
- Sanction Detection = A historical method of looking at how crimes were resolved. A sanction detection includes where an offender is Charged, Cautioned, given a Penalty Notices for Disorder or Cannabis Warning or Fixed Penalty Notices, and where an offender has crimes Taken Into Consideration (TIC - see below).
- TIC = Taken Into Consideration is typically where an offender admits to further offences to avoid potentially being pursued for these at a later date.
- TTCG = Tactical Tasking & Co-ordination Group is an internal meeting which directs resources to tackle specific problems