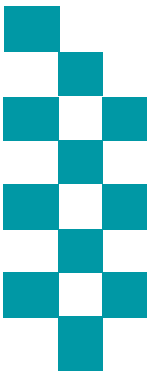


Public Accountability Board



Meeting Date: 27th August 2019 13:30



BE SAFE
FEEL SAFE

Agenda



Caring About the Vulnerable

Mental Health

s136 Detentions



Ambitious Collaboration

Force Overview

City Command

Coastal Command



Reinforcing Local Policing

County Command

Crime Trends

Crime Focus

ASB/PSW
Incidents

Proactive Policing



Enhancing the Customer Experience

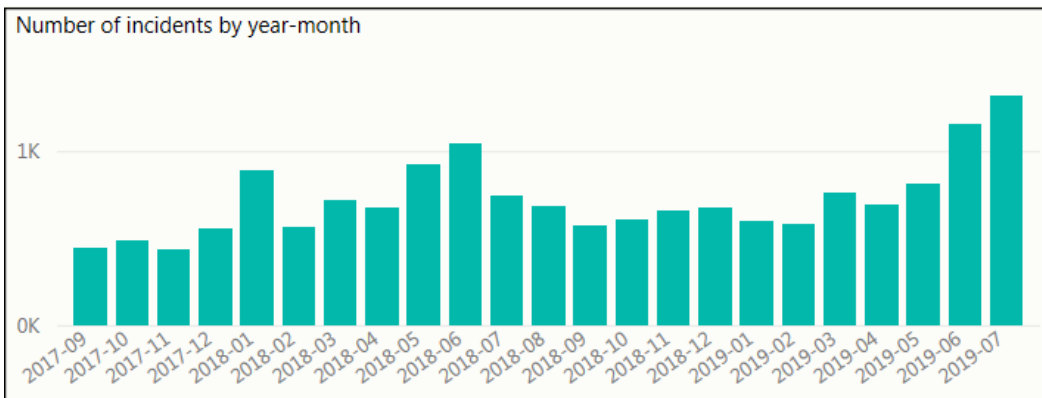
999

101

Local Priorities

Mental Health

Occurrences involving a person(s) with a mental health qualifier



- There are significant increases in occurrences with Mental Health tags in the last 3 months.
- As of 1st April 2019, NYP adopted the new NPCC definition of Mental Health, this has given a clearer definition of incidents that have mental health at its centre. Leading to increased tagging of incidents and a better response for those occurrences.
- Incidents with a Mental Health tag have accounted for 9.7% of all incidents in the last 22 months

Incidents with highest number of Mental Health Tag (July '18 – July '19)

Description	Volume with mental health tag	% of All Type of Incidents
CONC SAFETY/TRAPPED/INJ/ILL	5550	41.25%
MISSING PERSON	640	34.45%
DOMESTIC INCIDENT	719	12.86%
VIOLENCE	865	9.48%
ASB NUISANCE	522	4.99%

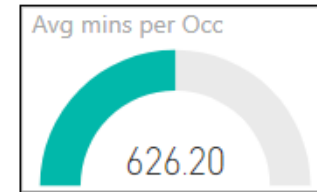
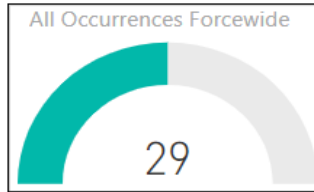
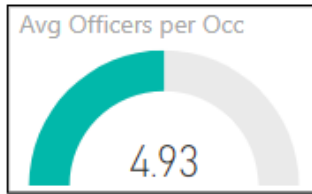
Incident data (left) relates to the initial police response where Mental health presented and was tagged on the incident

Use of police custody as a place of safety

Police custody must only be used for s136 MHA detainees in highly exceptional circumstances, e.g. genuinely unmanageable risks of resistance, aggression, violence or escape, or if also detained for an offence. We scrutinise every use of custody in these circumstances. Further details are included on the following slide.

s136 Detentions (Police Custody)	Aug-18	Sep-18	Oct-18	Nov-18	Dec-18	Jan-19	Feb-19	Mar-19	Apr-19	May-19	Jun-19	Jul-19
Under 18	0	0	0	0	0	0	0	0	0	0	0	0
Aged 18 or Over	1	2	0	1	4	2	2	3	0	2	1	1
Total	1	2	0	1	4	2	2	3	0	2	1	1

s136 – July 2019

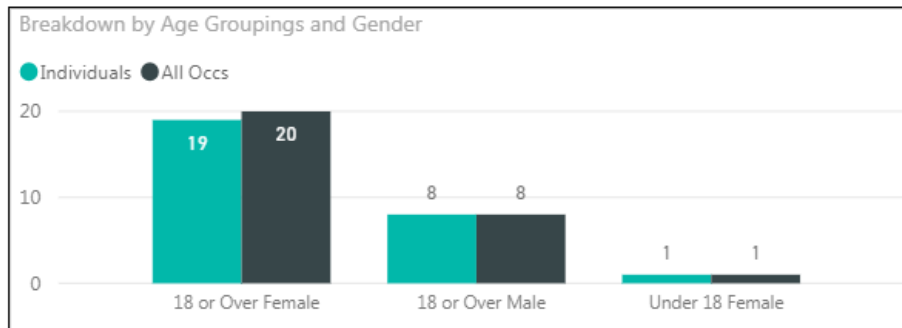


By Occurrence Type

Closing Code Desc	Count
CONC SAFETY/TRAPPED/INJ/ILL	23
NUISANCE	3
BURGLARY BUSINESS & COMMUNITY	1
DOMESTIC INCIDENT	1
MISSING PERSON	1
Total	29

- July 2019 saw a return to normal incident levels
- There were 0 detainees required to be taken out of the county this month
- 1 individuals had repeat s136 detentions in July 2019.
- 16 incidents required Police transportation:
 - 6 following Risk assessment
 - 2 No Ambulance available within 30 mins
 - 7 Not recorded
 - 1 Due to risk of Absconding

Gender/Age Breakdown and Repeat Nominals



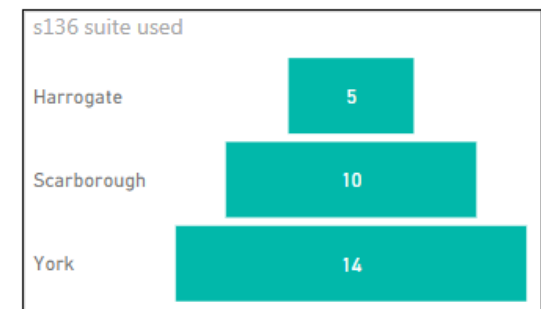
Outcomes

Outcome	Totals
Open to services, returned to the community with follow up by current service	10
Returned to the community with follow up arranged at assessment	8
Formal Admission	7
Not open to services. Returned to the community without follow up	3
Informal Admission	1
Total	29

Mode of Transport



HBPOS Usage



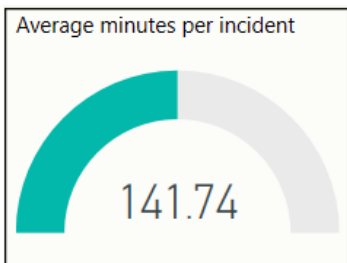
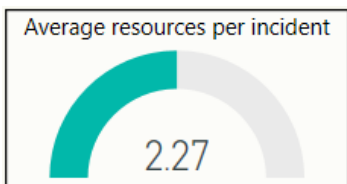
Force Levels (Incidents and Crimes Committed July 2019)

Count of all Incidents and type

Count of incidents
8,296

Total Crimes Committed
4172

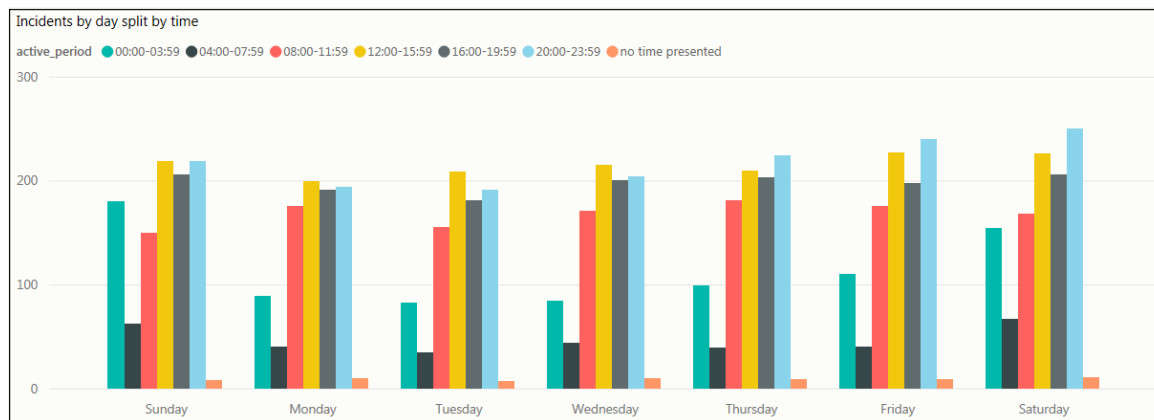
Average Officers and Time Spent



Incident Volumes by Date



Incident Volumes by Day and Time Group



Highest Wards by volume of Crime

Castle	Low Ha...	Westfi...	Central	Holgate
254	102	92	Micklega...	Clifton
Guildhall Inner (NYP)	Huntin...	Hewor...	North Bay	Selby So...
	100	91		

Volume by Crime type

Crime	2019-07
Arson & Criminal Damage	532
Burglary	336
Drug Offences	137
Fraud	302
Misc Crimes Against Society	71
Possession Of Weapons	21
Public Order Offences	274
Robbery	18
Sexual Offences	94
Theft	864
Vehicle Offences	203
Violence Against The Person	1320
Total	4172

City Command (Incidents and Crimes Committed July 2019 – York and Selby)

Count of all Incidents and type

Count of incidents

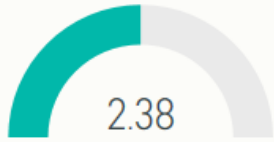
2,935

Total Crimes Committed

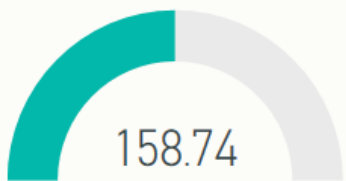
1514

Average Officers and Time Spent

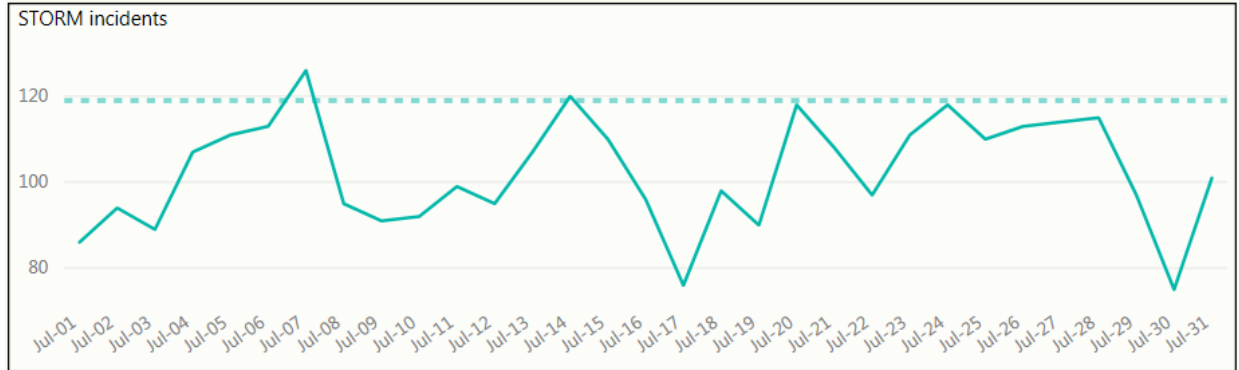
Average resources per incident



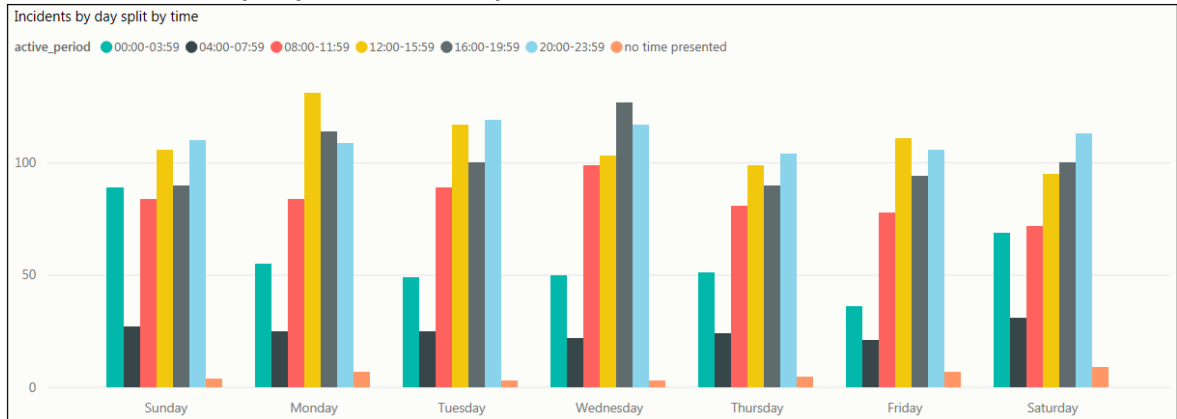
Average minutes per incident



Incident Volumes by Date



Incident Volumes by Day and Time Group



Highest Wards by Crime Volume

Guildhall Inner (NYP)	Huntington...	Westfield	Micklegate Outer (...)	Clifton
182	100	92	77	71
		Heworth	Holgate	Selby South
		91	72	71

Volume by Crime type

Crime	2019-07
Arson & Criminal Damage	177
Burglary	121
Drug Offences	46
Fraud	96
Misc Crimes Against Society	24
Possession Of Weapons	9
Public Order Offences	87
Robbery	7
Sexual Offences	28
Theft	387
Vehicle Offences	74
Violence Against The Person	458
Total	1514

Coastal Command (Incidents and Crimes Committed July 2019 – Scarborough and Ryedale)

Count of all Incidents and type

Count of incidents

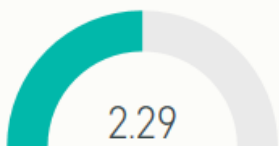
2,190

Total Crimes Committed

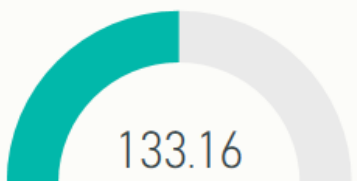
1174

Average Officers and Time Spent

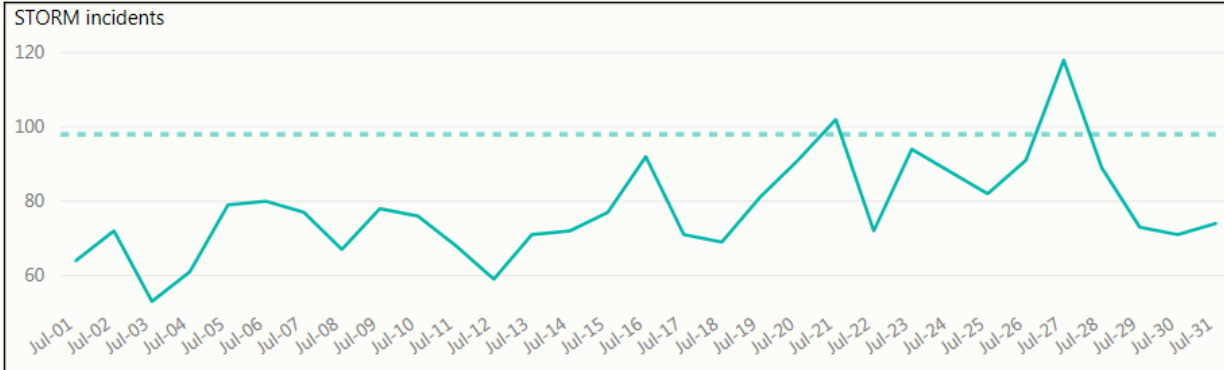
Average resources per incident



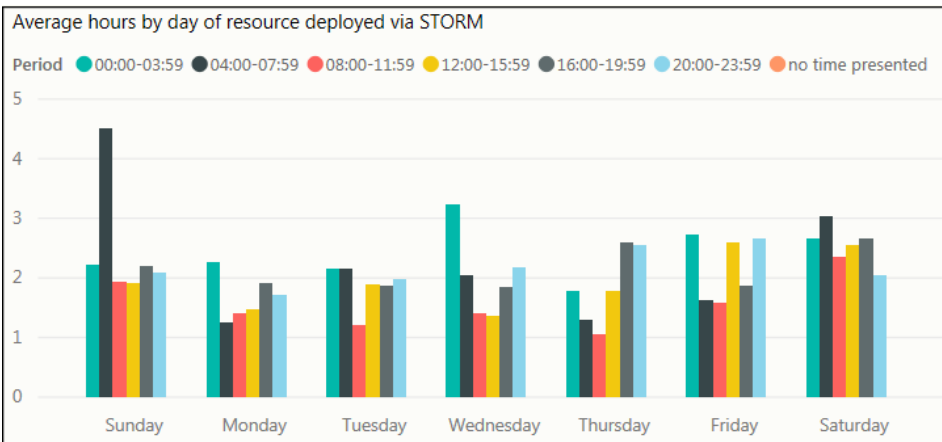
Average minutes per incident



Incident Volumes by Date



Incident Volumes by Day and Time Group



Volume by Crime type

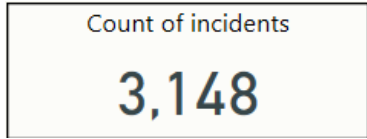
Crime	2019-07
Arson & Criminal Damage	139
Burglary	74
Drug Offences	42
Fraud	67
Misc Crimes Against Society	23
Possession Of Weapons	11
Public Order Offences	91
Robbery	4
Sexual Offences	30
Theft	217
Vehicle Offences	45
Violence Against The Person	431
Total	1174

Highest Wards by Crime Volume

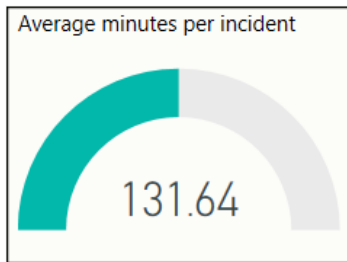
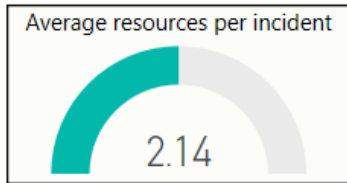
Castle	Central	North Bay	Ramshill	Whitby Wes...
254	78	76	55	41
		Eastfield	Newby	Falsgrave Park
				40

County Command (Incidents and Crimes Committed July 2019 – Hamb, Rich, H'gate and Craven)

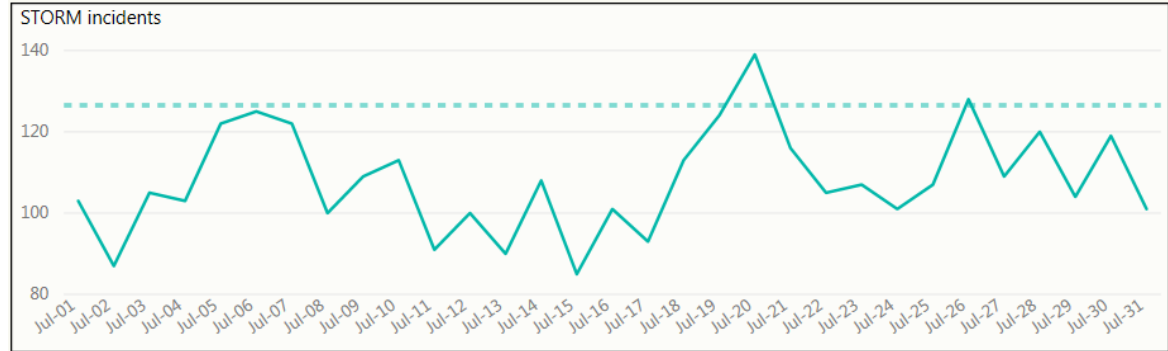
Count of all Incidents and type



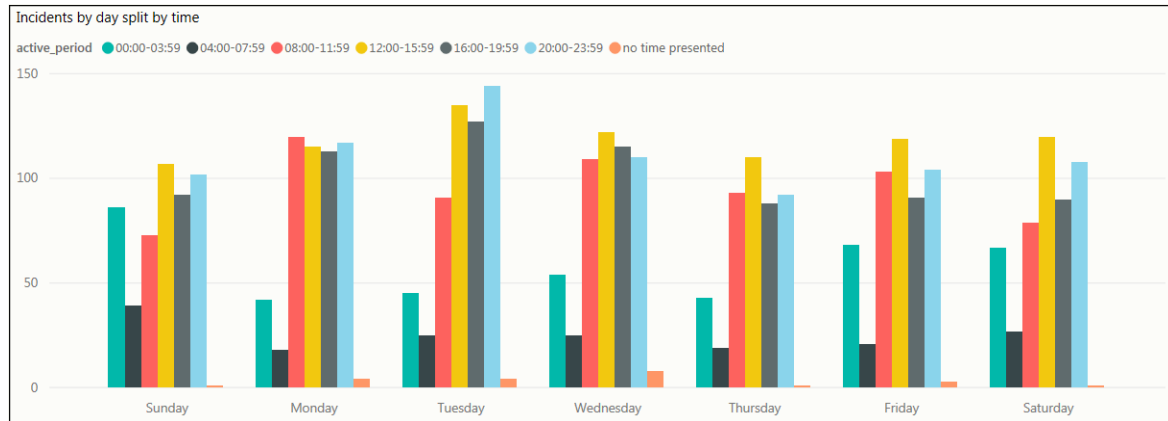
Average Officers and Time Spent



Incident Volumes by Date



Incident Volumes by Day and Time Group



Highest Wards by Crime Volume

Low Harrog...	High Harr...	Ripon Mi...	Rossett	Skipton...	Thirsk
102	45	43	39	36	35
	Hookstone	Northalle...	Richmo...	Granby	Knares...
	44	41	38	35	34

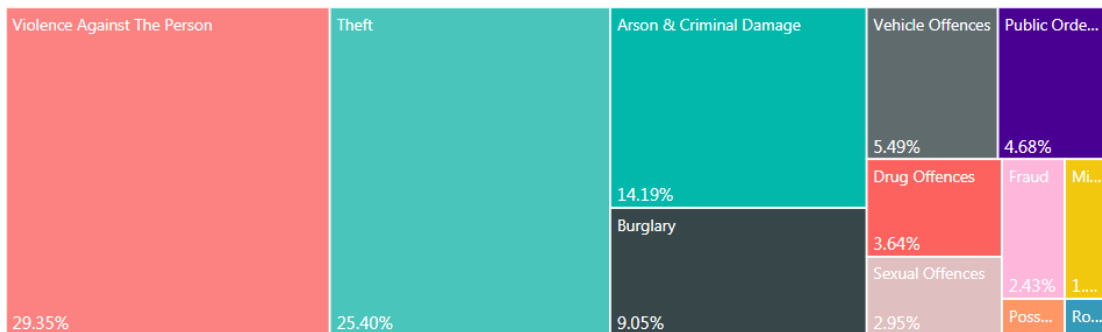
Volume by Crime type

Crime	2019-07
Arson & Criminal Damage	216
Burglary	141
Drug Offences	49
Fraud	139
Misc Crimes Against Society	23
Possession Of Weapons	1
Public Order Offences	96
Robbery	7
Sexual Offences	36
Theft	260
Vehicle Offences	84
Violence Against The Person	430
Total	1482

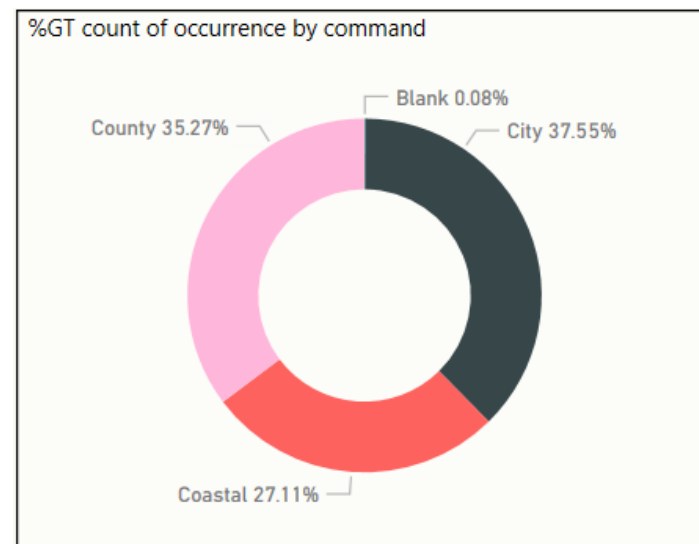
CRIME – Financial Year to Date Comparison (Crimes Committed)

	Apr-Jul '17	Apr-Jul '18	Apr-Jul '19	% Diff (2019 compared 2018)
Arson & Criminal Damage	2011	2049	1997	-2.5%
Burglary	1207	1259	1287	2.2%
Drug Offences	505	617	564	-8.6%
Misc Crimes Against Society	297	228	270	18.4%
Possession Of Weapons	71	102	110	7.8%
Public Order Offences	591	854	1031	20.7%
Robbery	53	80	72	-10.0%
Sexual Offences	409	445	435	-2.2%
Theft: All Other Theft	1539	1677	1524	-9.1%
Theft: Bicycle Theft	395	391	363	-7.2%
Theft: Shoplifting	1568	1541	1531	-0.6%
Theft: Theft From Person	123	184	188	2.2%
Vehicle Offences	828	821	743	-9.5%
Violence Against The Person	3622	4815	5150	7.0%
Grand Total	13219	15063	15265	1.3%

% Split of Crime Types



% split of all crimes by Command



CRIME FOCUS – Financial Year To Date

HAM & RICH SNC

	Apr-Jul '19	% diff Same Period '18
CRIME	1834	3.6%
Burglary	155	-1.9%
Theft: Other	216	-1.4%
Theft: Shoplifting	121	3.4%
Criminal Damage	263	-9.0%
Drug Offences	65	38.3%
Violence Offences	687	12.8%

SCAR & RYE SNC

	Apr-Jul '19	% diff Same Period '18
CRIME	4056	10.0%
Burglary	254	0.8%
Theft: Other	370	-13.3%
Theft: Shoplifting	363	9.7%
Criminal Damage	550	9.1%
Drug Offences	180	2.9%
Violence Offences	1515	10.7%

CRAVEN SNC

	Apr-Jul '19	% diff Same Period '18
CRIME	785	-0.1%
Burglary	124	6.9%
Theft: Other	79	-27.5%
Theft: Shoplifting	51	0.0%
Criminal Damage	100	7.5%
Drug Offences	24	-25.0%
Violence Offences	241	18.7%

YORK SNC

	Apr-Jul '19	% diff Same Period '18
CRIME	4409	-1.1%
Burglary	288	-8.6%
Theft: Other	448	2.1%
Theft: Shoplifting	629	20.7%
Criminal Damage	503	-6.9%
Drug Offences	150	-23.1%
Violence Offences	1344	-2.7%

HARROGATE

	Apr-Jul '19	% diff Same Period '18
CRIME	2746	-5.5%
Burglary	278	0.0%
Theft: Other	295	-6.3%
Theft: Shoplifting	267	-23.5%
Criminal Damage	380	-8.0%
Drug Offences	101	-13.7%
Violence Offences	857	8.5%

SELBY SNC

	Apr-Jul '19	% diff Same Period '18
CRIME	1423	-0.5%
Burglary	187	35.5%
Theft: Other	115	-29.9%
Theft: Shoplifting	100	-41.9%
Criminal Damage	201	-3.4%
Drug Offences	43	-10.4%
Violence Offences	499	9.2%

ANTI SOCIAL BEHAVIOUR, PUBLIC SAFETY & WELFARE AND CASUALTIES FROM ROAD TRAFFIC COLLISIONS THAT ARE KILLED & SERIOUSLY INJURED

HAM & RICH SNC

	Apr-Jul '19	% diff Same Period '18
ASB	854	-25.9%
PSW	4132	1.9%
Missing Person	82	-11.8%
Concern Safety	881	0.0%
Domestic Inc	212	-13.5%
KSI	118	9.3%

SCAR & RYE SNC

	Apr-Jul '19	% diff Same Period '18
ASB	2096	-20.7%
PSW	7065	-2.1%
Missing Person	286	9.6%
Concern Safety	1683	-10.6%
Domestic Inc	481	-17.4%
KSI	136	-4.2%

CRAVEN SNC

	Apr-Jul '19	% diff Same Period '18
ASB	297	-37.9%
PSW	1601	2.0%
Missing Person	41	-12.8%
Concern Safety	357	-10.8%
Domestic Inc	76	-12.6%
KSI	59	-18.1%

HARROGATE

	Apr-Jul '19	% diff Same Period '18
ASB	1452	-14.4%
PSW	5366	-2.1%
Missing Person	197	-20.2%
Concern Safety	1165	-12.7%
Domestic Inc	281	-11.9%
KSI	119	-9.2%

YORK SNC

	Apr-Jul '19	% diff Same Period '18
ASB	2311	-17.8%
PSW	7575	0.5%
Missing Person	230	1.3%
Concern Safety	1862	-2.4%
Domestic Inc	397	-29.5%
KSI	165	3.1%

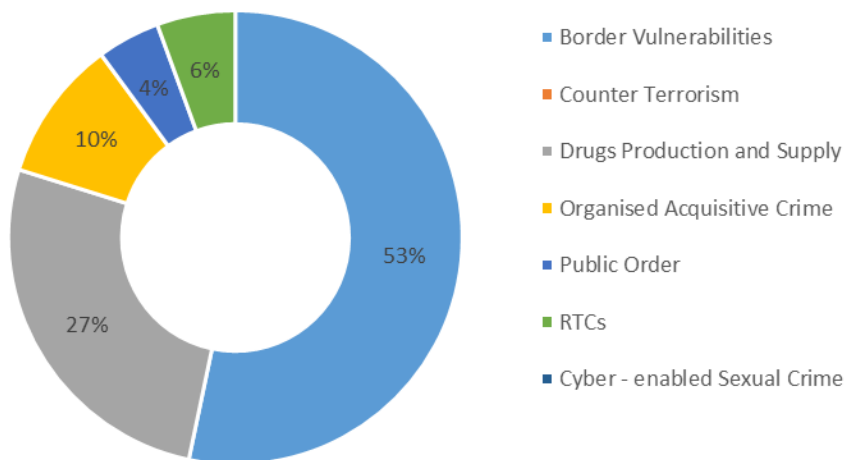
SELBY SNC

	Apr-Jul '19	% diff Same Period '18
ASB	740	-15.8%
PSW	2667	-8.2%
Missing Person	70	-17.6%
Concern Safety	621	-15.9%
Domestic Inc	183	-15.7%
KSI	52	2.0%

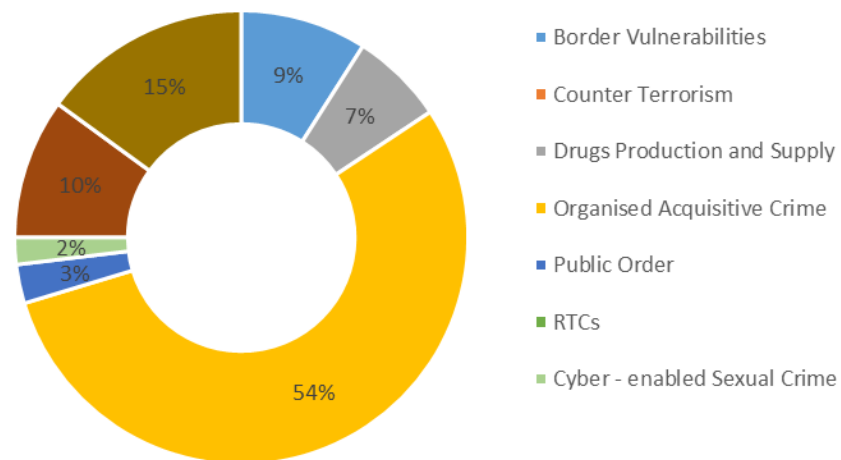
- ASB incidents continue to decrease in all SNCs
- PSW type incidents continue to be the long term increases experienced across all SNCs.

Proactivity: How has proactive policing contributed to control strategies? (July 2019)

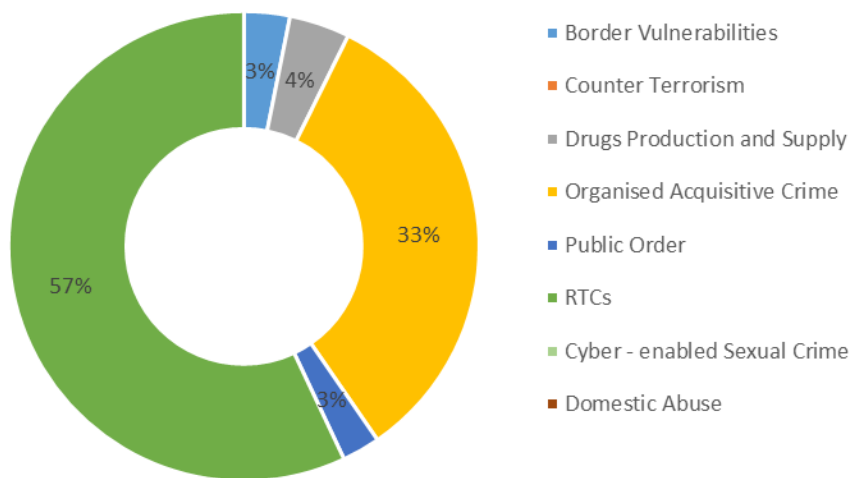
Split of 893 hours appointed to FSU



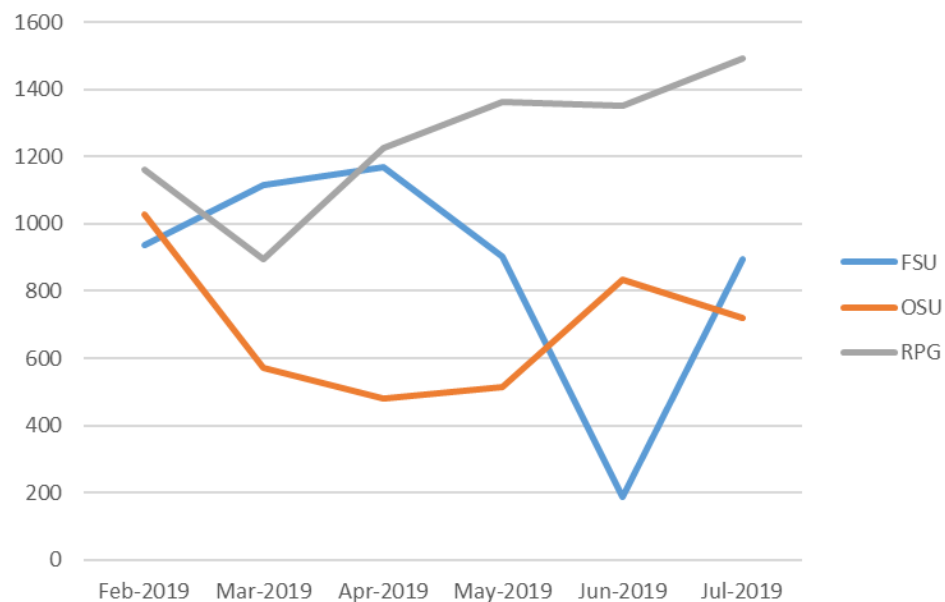
Split of 721 hours appointed to OSU



Split of 1490.5 hours appointed to RPG

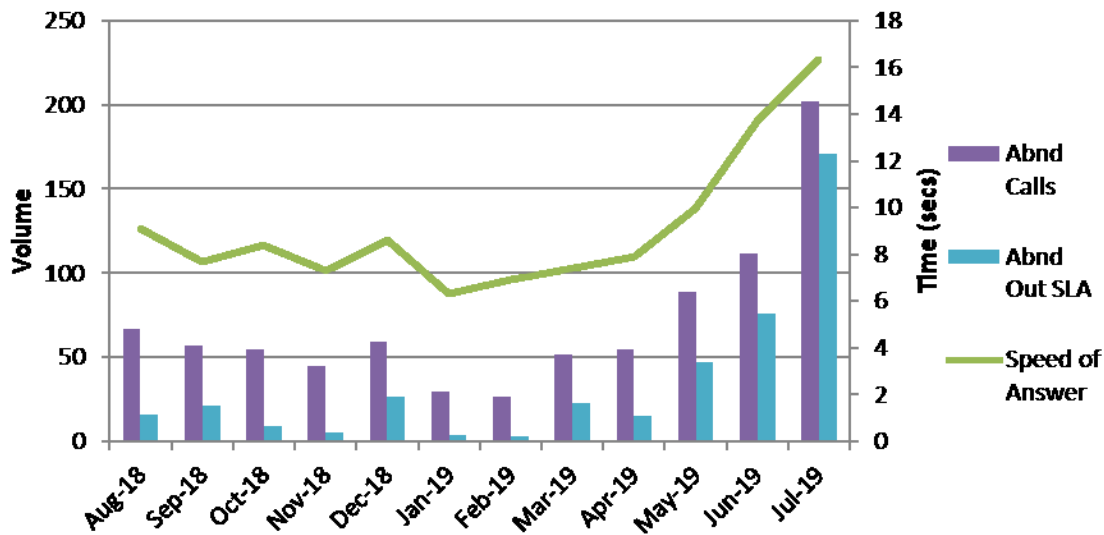
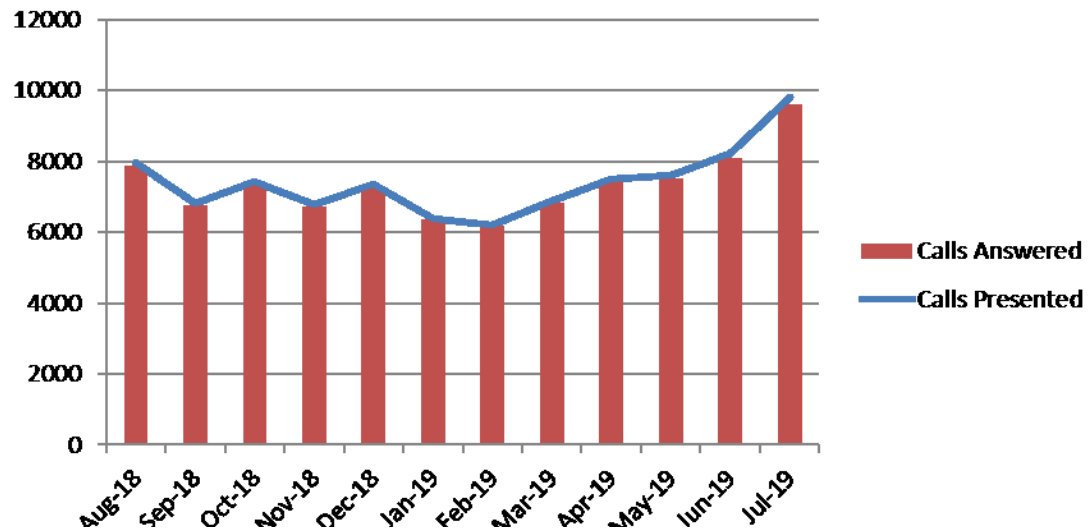


Last 6 months Proactive Hours undertaken



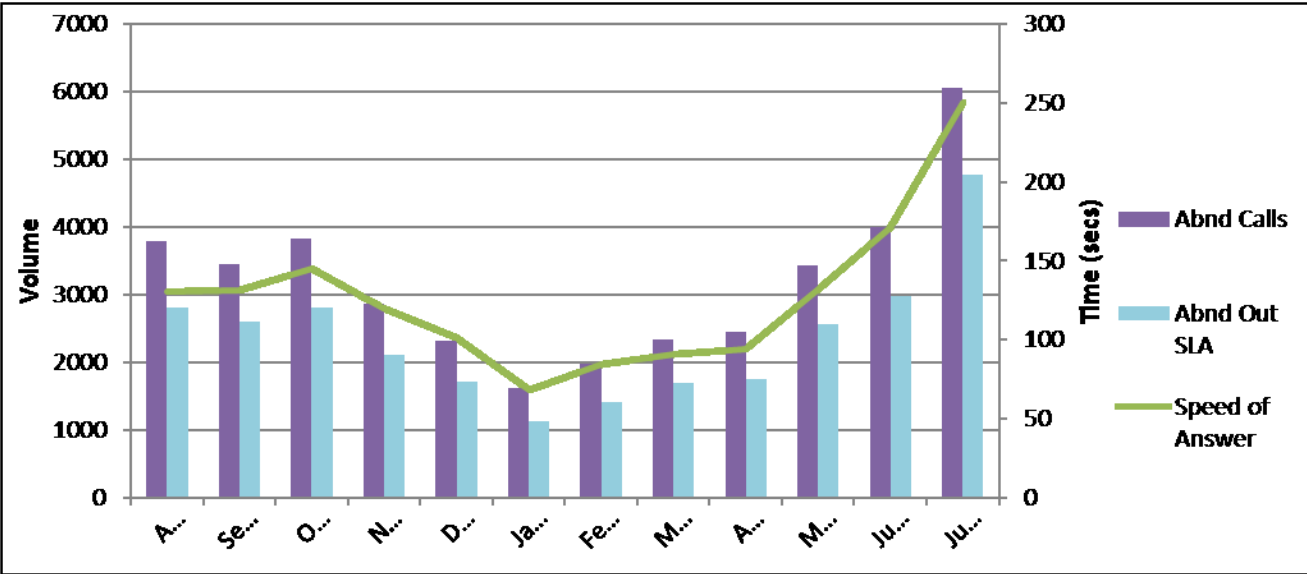
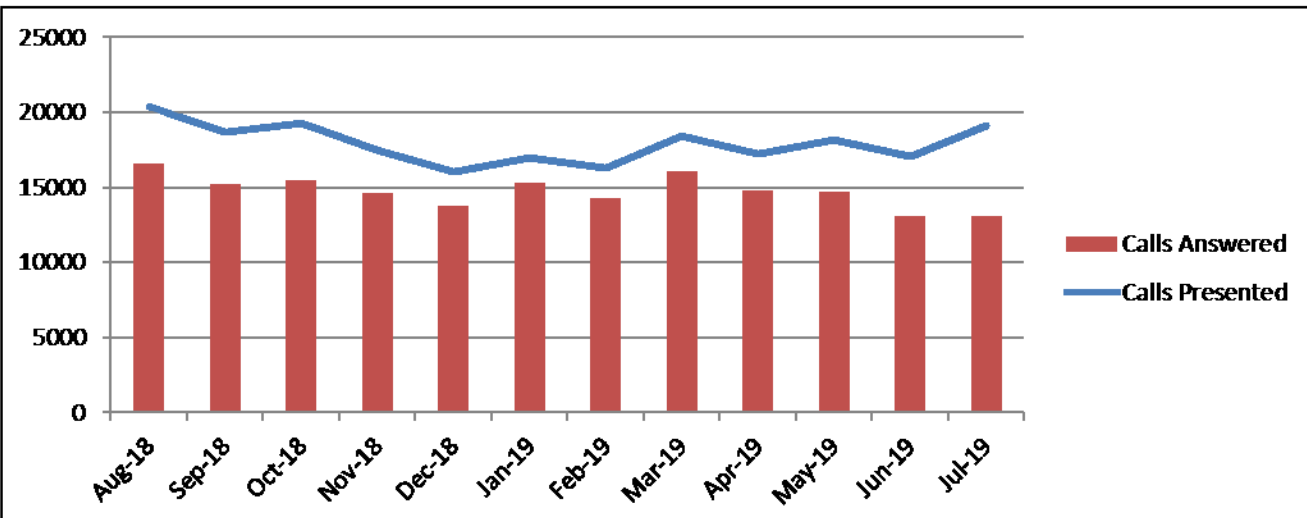
Initial Contact – 999 (12 month rolling data)

Month	Calls Presented	Calls Answered	Speed of Answer	Abnd Calls
Aug-18	7961	7894	9.1	67
Sep-18	6811	6754	7.7	57
Oct-18	7413	7358	8.4	55
Nov-18	6788	6743	7.3	45
Dec-18	7340	7281	8.6	59
Jan-19	6383	6353	6.3	30
Feb-19	6203	6176	6.9	27
Mar-19	6888	6836	7.4	52
Apr-19	7494	7439	7.9	55
May-19	7598	7509	10	89
Jun-19	8218	8106	13.7	112
Jul-19	9826	9624	16.3	202



Initial Contact - 101

Month	Calls Presented	Calls Answered	Speed of Answer	Abnd Calls
Aug-18	20420	16627	130.6	3793
Sep-18	18713	15266	131	3447
Oct-18	19280	15454	145.3	3826
Nov-18	17513	14653	120.3	2860
Dec-18	16061	13743	101.3	2318
Jan-19	16944	15327	68.5	1617
Feb-19	16308	14325	84.1	1983
Mar-19	18402	16056	91	2346
Apr-19	17235	14787	93.9	2448
May-19	18182	14744	131.9	3438
Jun-19	17093	13085	170.7	4008
Jul-19	19138	13088	250.6	6050



Local Policing – Police and Crime Plan 2017-2021

Hambleton	Apr-Jul 18	Apr-Jul 19	Diff
Burglary	112	104	-7.1%
Road	1950	1287	-34.0%
Mental Health	520	546	5.0%

Scarborough	Apr-Jul 18	Apr-Jul 19	Diff
Burglary	201	198	-1.5%
Drug Offences	151	161	6.6%
ASB	2237	1753	-21.6%

Richmondshire	Apr-Jul 18	Apr-Jul 19	Diff
Drug Offences	11	23	109.1%
Burglary	46	51	10.9%
ASB	382	299	-21.7%

Ryedale	Apr-Jul 18	Apr-Jul 19	Diff
Burglary	51	56	9.8%
Drug Offences	24	19	-20.8%
ASB	405	343	-15.3%
Road	1208	747	-38.2%

Harrogate	Apr-Jul 18	Apr-Jul 19	Diff
Burglary	278	278	0.0%
ASB	1696	1452	-14.4%
Road	3367	1995	-40.7%
Cyber	49	88	79.6%

York	Apr-Jul 18	Apr-Jul 19	Diff
Violence	1382	1344	-2.7%
Burglary	315	288	-8.6%
ASB	2811	2311	-17.8%
Cyber	64	116	81.3%

Craven	Apr-Jul 18	Apr-Jul 19	Diff
Burglary	116	124	6.9%
Road	950	686	-27.8%
Crime	786	785	-0.1%

Selby	Apr-May 18	Apr-May 19	Diff
Drugs	48	43	-10.4%
Burglary	138	187	35.5%
ASB	879	740	-15.8%
Cyber	26	40	53.8%

GLOSSARY

Glossary

- ASB = Anti-Social Behaviour
- CMS = Community Messaging System
- Concern Safety = Concern for Safety – includes all occurrences where there is a concern for an individual's safety or welfare
- Fraud Offences = These are not included in the crime statistics as they are not reported by forces to the Home Office. Instead these crimes are passed to Action Fraud and statistics are collated by that agency
- FSU = Firearms Support Unit
- I Grade = priority assigned by control room for an incident requiring ImmEDIATE police response
- KSI = A casualty Killed or Seriously Injured as a result of a Road Traffic Collision on a public road
- MCU = Major Crime Unit
- Miss Pers = Missing Person
- MO = Modus Operandi
- NPS = New PsychoaSubstances is the official term for Legal Highs
- NTE = Night Time Economy
- OCG = Organised Crime Group
- OSU = Operational Support Unit – a specialist unit which is deployed around the force through tactical bidding process
- OPL = Over Prescribed Limit typically the term used to describe failing a breath test
- PCSO = Police Community Support Officer
- PSW = Personal Safety and Welfare
- Resolved Outcome = A crime where an offender has been dealt with through sanction or restorative justice.
- RPG = Roads Policing Team
- RTF = Rural Task Force
- SNC = Safer Neighbourhood Command – Area of Policing attributed to
- Sus Circs = Suspicious Circumstances – includes Insecure premises and Vehicles
- TIC = Taken Into Consideration is typically where an offender admits to further offences to avoid potentially being pursued for these at a later date.