



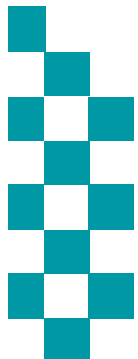
Corporate Performance & Scrutiny Group



Meeting: Tuesday 27th October

Reporting Period: 1st Apr 15 → 30th Sept 15

NB: Statistics remain provisional and subject to change





INTRODUCTION



Reporting Period: 01/04/2015 → 30/09/2015

Contents:

- The Results: Current Performance levels
 1. Headline overview statistics
 2. Crimes & ASB statistics (including stats by District council area)
 3. Road Traffic Collision casualties
- The People: HR/headcount information
- Finance: Included as an Appendix

Recommendations:

- The Group notes the contents and current position

Actions arising from this meeting in response to scrutiny:

-

Glossary of Terms

- Please final page in document

Time Periods

- Unless indicated otherwise statistics are presented by financial year

Performance Monitoring/Management and Operational Priorities

- At a strategic level this meeting (The Corporate Performance & Scrutiny Group) and Executive Board consider performance in the broader context of financial and people data and consider progress against the delivery of the Police and Crime Plan
- The force runs its Tactical Tasking & Co-ordination Group (TTCG) meeting on a 3 month cycle rather than monthly. This meeting looks predicted operational matters some 3 to 6 months in the future. Local TTCG meetings also run quarterly
- The Performance Steering Group now sits with the Operational Delivery Board meeting which also monitors progress against business plans and activity around HMIC inspections

EXECUTIVE SUMMARY

September 2015 Dashboard

Total Crime Recorded

Victim Based Crimes recorded

Anti-Social Behaviour Incidents Reported

Killed Seriously Injured Casualties

% Victims Satisfied

% public w ho believe NYP/Councils deal w ith

% public w ho are Confident in NYP



2015/16	15856	2015/16	14187	2015/16	14070	2015	280	2015	82.8%	2015	67.3%	2015	81.2%
v 14/15	6.6%	v 14/15	8.3%	v 14/15	-5.0%	v 2014	-21.0%	v 2014	-5.3%	v 2014	-0.6%	v 2014	1.9%
v 13/14	7.2%	v 13/14	6.9%	v 13/14	-6.1%	v 2013	-21.0%	v 2013	-5.1%	v 2013	-0.4%	v 2013	3.4%

Commentary on current position

- **Crime:** NYP has the lowest crime per 1000 population in England. The main exceptions continue to be in Criminal Damage & Violence and these trends appear to be reflected nationally. Previous reports (<http://www.northyorkshire-pcc.gov.uk/taking-action/scrutiny-of-north-yorkshire-police/performance-reports/>) contain more detailed commentary on these trends.
- Of note this last month Harrogate has seen a spike in Burglary Dwelling offences with some 50 recorded in September. At the time of writing (5th October) several suspects and lines of enquiry (both within force and outside force area) have been identified and the investigations were ongoing
- Ongoing major crime investigation including Claudia Lawrence (Op Essence) , a murder & att.murder in York (Op Overcast), Blackmail (Op Ram), Robbery/Aggrv. Burglary in Knaresborough (Op Neutron)
- **ASB** is down by 5% on last year. Movement within ASB categories likely linked to improved recording. Repeat victimisation linked to ongoing neighbour disputes – housing associations aware and providing mediation.
- **Killed Seriously Injured (KSI) casualties:** shows a reduction against previous years
- **Satisfaction:** Satisfaction remains high and trends for victims of Violence and Burglary are stable. A negative trend previously identified for victims of auto crime remains under scrutiny. This drop is linked to changes in attendance rates under the THRIVE model (NB more than 2000 officer hours have been freed up since April 2014) and appears to be linked to "management of expectations". Advice/guidance has been disseminated in the Force Control Room.
- **Public Confidence:** in police & partners remains high based on latest national dataset.
- In September ACC Kennedy held a Performance Conference in Scarborough which was attended by local command and partners from community safety, probation and Tees Esk & Wear Valley NHS Trust. ACC Kennedy will be conducting a similar event for Hambleton, Richmondshire & Craven and the Force Control Room in October. The areas of focus include quality of service, community engagement and feedback, partnerships, deployment and tasking of resources.

NOT PROTECTIVELY MARKED

CRIME / ASB / PSW v PREVIOUS YEARS VOLUME CHANGE

RECORDED CRIME STATISTICS		2013/14	2014/15	2015/16	Diff 15/16 v 14/15		Diff 15/16 v 13/14		Trend
Victim Based	Arson & Criminal Damage	2865	2549	3000	451	17.7%	135	4.7%	
	Burglary: Burglary Dwelling	767	752	762	10	1.3%	-5	-0.7%	
	Burglary: Burglary Non Dwelling	1334	1274	1304	30	2.4%	-30	-2.2%	
	Robbery	56	73	87	14	19.2%	31	55.4%	
	Sexual Offences: Other	237	368	402	34	9.2%	165	69.6%	
	Sexual Offences: Rape	110	146	191	45	30.8%	81	73.6%	
	Theft: All Other Theft	2971	2723	2561	-162	-5.9%	-410	-13.8%	
	Theft: Bicycle Theft	772	708	749	41	5.8%	-23	-3.0%	
	Theft: Shoplifting	1996	2009	2066	57	2.8%	70	3.5%	
	Theft: Theft From Person	272	282	238	-44	-15.6%	-34	-12.5%	
	Vehicle Offences	1328	1108	1115	7	0.6%	-213	-16.0%	
	Violence: Violence With Injury	1987	2024	2403	379	18.7%	416	20.9%	
	Violence: Violence Without Injury	1114	1642	2072	430	26.2%	958	86.0%	
	Total	15809	15658	16950	1292	8.3%	1141	7.2%	
Crimes Against Society	Drugs: Possession Of Drugs	796	925	811	-114	-12.3%	15	1.9%	
	Drugs: Trafficking Of Drugs	116	150	147	-3	-2.0%	31	26.7%	
	Misc Crimes Against Society	192	274	253	-21	-7.7%	61	31.8%	
	Possession Of Weapons	88	125	80	-45	-36.0%	-8	-9.1%	
	Public Order Offences	639	665	703	38	5.7%	64	10.0%	
	Total	1831	2139	1994	-145	-6.8%	163	8.9%	
Total	17640	17797	18944	1147	6.4%	1304	7.4%		

Slide Summary

- This slide shows **volume change** across the last 3 years.
- **Victim Based Crime** is up on previous years by 8%.
- Despite this rise NYP remains having the lowest crime per 1000 population in England

NON CRIME STATISTICS		2013/14	2014/15	2015/16	Diff 15/16 v 14/15		Diff 15/16 v 13/14		Trend
ASB	Total	17729	17686	16590	-1096	-6.2%	-1139	-6.4%	
PSW	Total	38651	38849	39614	765	2.0%	963	2.5%	

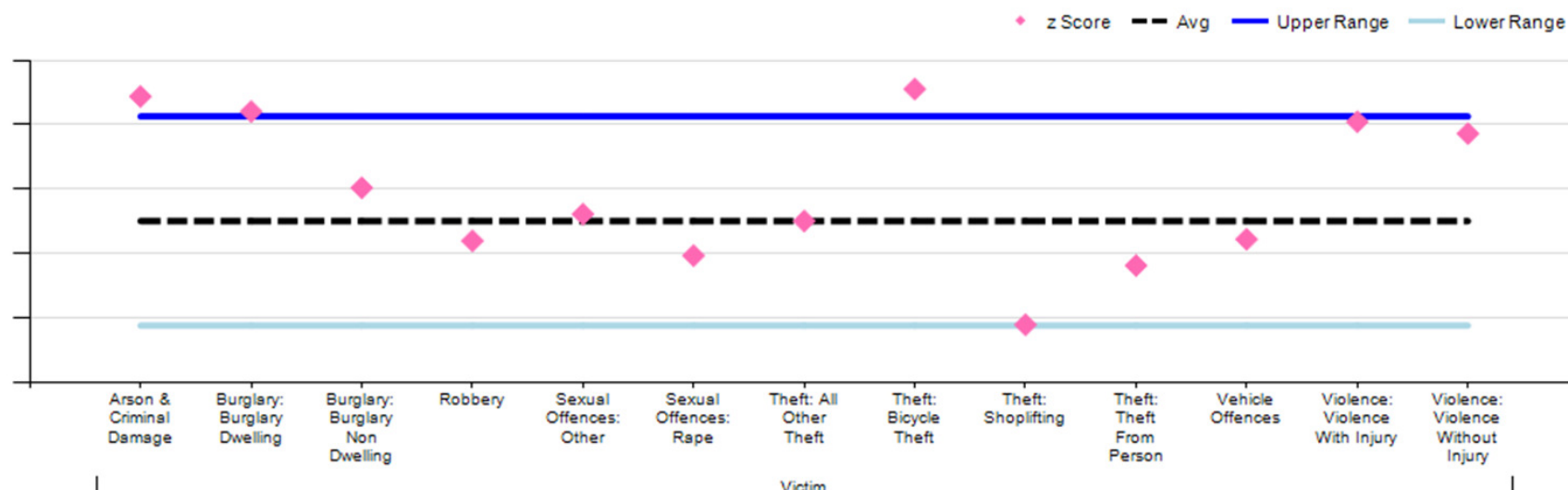
- **ASB** is down on the previous year by 6%
- **PSW** volume trend is still rising year on year, and is up by 2% on last year.

NOT PROTECTIVELY N

EXCEPTION BANDING: VICTIM BASED CRIME

◆ Represents Crime levels recorded in the last month, Data is normalised and presented as a statistic known as a Z score. The benefit of doing this is to allow crime groups with different volumes (e.g. robbery and criminal damage) to be presented on same graph. Crime levels can be described as normal if they fall between the light blue & dark blue lines as movement with this range is likely to be random fluctuations in the data.

Distribution of CRIME against normal levels



Slide Summary

- When analysed by type most crimes were within **normal tolerance** in September.
- The long term exceptions remain **Violence & Criminal Damage** - Both these crime groups remain in exception meaning the monthly trends are higher than expected. These trends are reflected nationally and the causes are complex. These have been discussed in detail in previous reports and there is no further update or factors to report at this time.
- Other exceptions of note have been:
 - **Burglary Dwelling** - This is linked to some 50 offences committed within the Harrogate command area in September. Offences involving forced entry or insecure entry have generally been within the daytime whilst theft of a vehicle have mainly been overnight. At the time of writing (5th October) several suspects and lines of enquiry (both within force and outside force area) have been identified and the investigations were ongoing.
 - **Bicycle Theft** - a spike in York in August and September has focussed on two categories 1) high value cycles and 2) opportunistic theft. Some of these offences have been linked to several youths local to York. There have been arrests but minimal amounts of property recovered. The local SNT have been working until 0200/0300hrs in recognised hot spot areas, undertaking property marking events (#whatisdotpeen) alongside Op Joypad proactive security checks. Reassurance patrols and high visibility patrols continue. Op Ramble specifically focuses on cycle theft and garage burglaries in York

VICTIM BASED CRIME BY DISTRICT v PREVIOUS YEARS

NO OF CRIMES	2015/16	
HAMBLETON	1316	
CHANGE 15/16 v 14/15	116	9.7%
CHANGE 15/16 v 13/14	-20	-1.5%

NO OF CRIMES	2015/16	
RICHMONDSHIRE	672	
CHANGE 15/16 v 14/15	-47	-6.5%
CHANGE 15/16 v 13/14	-128	-16.0%

NO OF CRIMES	2015/16	
RYEDALE	733	
CHANGE 15/16 v 14/15	41	5.9%
CHANGE 15/16 v 13/14	67	10.1%

NO OF CRIMES	2015/16	
SCARBOROUGH	3532	
CHANGE 15/16 v 14/15	301	9.3%
CHANGE 15/16 v 13/14	621	21.3%

NO OF CRIMES	2015/16	
HARROGATE	2802	
CHANGE 15/16 v 14/15	180	6.9%
CHANGE 15/16 v 13/14	149	5.6%

NO OF CRIMES	2015/16	
CRAVEN	866	
CHANGE 15/16 v 14/15	103	13.5%
CHANGE 15/16 v 13/14	-46	-5.0%

NO OF CRIMES	2015/16	
YORK	5436	
CHANGE 15/16 v 14/15	492	10.0%
CHANGE 15/16 v 13/14	310	6.0%

NO OF CRIMES	2015/16	
SELBY	1572	
CHANGE 15/16 v 14/15	96	6.5%
CHANGE 15/16 v 13/14	170	12.1%

- Across the districts the main rises have been in Criminal Damage and Violence. Aside from these two issues (please see commentary from previous reports) of note in September has been:

- the spike in Burglary across the Harrogate area and a rise in Cycle Theft in York which has been a continuation of a rise seen in August.

- Commentary on these two crime types is found on the previous slide.

The above is a presentation of year on year statistics. For latest local data displayed on a map for your area go to www.police.uk and enter your postcode

NOTABLE INVESTIGATIONS

- **Op Browser** – murder. Both defendants appeared at Leeds Crown Court and entered a plea for Manslaughter which was accepted. One was sentenced to 7 years and the other to 6 years custody.
- **Op Hurley** – murder . Trial scheduled for 19th October. Plea for manslaughter rejected. Ongoing work by Major Crime Unit re disclosure and medical evidence.
- **Op Neutron** – robbery / aggravated burglary in Knaresborough - 7 x suspects arrested. CPS advice pending.
- **Op Overcast** – murder at Hamilton Drive York in July. One person on remand.
- **Op Hoe** – peanut allergy case – awaiting trial.
- **Op Essence** – on going investigation (Claudia LAWRENCE).
- **Op Ram** – Complex blackmail. 4 x persons charged & remanded, one other person on bail. Enquiries ongoing to locate 2 further suspects.

ASB BY DISTRICT v PREVIOUS YEARS

NO OF ASB	2015/16	
HAMBLETON	1246	
CHANGE 15/16 v 14/15	-124	-9.1%
CHANGE 15/16 v 13/14	-237	-16.0%

NO OF ASB	2015/16	
RICHMONDSHIRE	762	
CHANGE 15/16 v 14/15	2	0.3%
CHANGE 15/16 v 13/14	-80	-9.5%

NO OF ASB	2015/16	
RYEDALE	631	
CHANGE 15/16 v 14/15	-43	-6.4%
CHANGE 15/16 v 13/14	-115	-15.4%

NO OF ASB	2015/16	
SCARBOROUGH	3801	
CHANGE 15/16 v 14/15	-295	-7.2%
CHANGE 15/16 v 13/14	14	0.4%

NO OF ASB	2015/16	
HARROGATE	2626	
CHANGE 15/16 v 14/15	-409	-13.5%
CHANGE 15/16 v 13/14	-261	-9.0%

NO OF ASB	2015/16	
CRAVEN	603	
CHANGE 15/16 v 14/15	-105	-14.8%
CHANGE 15/16 v 13/14	-257	-29.9%

NO OF ASB	2015/16	
YORK	5230	
CHANGE 15/16 v 14/15	-200	-3.7%
CHANGE 15/16 v 13/14	-202	-3.7%


- **ASB** is down on the previous year by 5%

• Current levels of ASB "Personal" are higher than usual however a significant amount of work has recently been done within the Force Control Room to ensure correct compliance with National Incident Standards (NSIR) and rises in Personal ASB are offset by falls within Nuisance ASB.

• Recent analysis of repeat ASB Personal victims with highest incident count reveals on going neighbour issues and in all cases the housing associations were aware and conducting or had conducted some form of mediation.

NO OF ASB	2015/16	
SELBY	1629	
CHANGE 15/16 v 14/15	81	5.2%
CHANGE 15/16 v 13/14	1	0.1%

CASUALTIES KILLED OR SERIOUSLY INJURED FROM ROAD TRAFFIC COLLISIONS

Key Performance Indicator		YTD	+/- Change		Rolling Qtr	
		2015	on 2014	on 2013	Qtr	+/-
	Killed or Seriously Injured casualties from RTCs:	280	-74 (-21%)		115	-55 (-32%)
	Motorcyclist KSI casualties from RTCs:	60	-18 (-23%)		30	-22 (-42%)
	Child (= <16) KSI casualties from RTCs:	12	-5 (-29%)		7	4 (133%)
	Cyclist KSI casualties from RTCs:	44	-24 (-35%)		17	-21 (-55%)

- Please note these are provisional data for the period 1st January to 31st August15 .
- Long term the trend in KSIs is down. Of note, there were five child casualties in August and this was from two collisions, one of the collisions was on the A167 resulting in two child casualties from one of the vehicles and the other collision was on the A61 where one of the vehicles involved was a coach. The trend in child KSI remains down.
- The provisional stats show a reduction on the previous years:
 - All KSI = 21 fatal and 259 serious against 30 fatal and 335 serious in same period in 2014.
 - Motorcycle = 5 fatal and 55 serious against 8 fatal and 70 serious in same period in 2014.
 - Pedal cyclist = 2 fatal and 42 serious against 2 fatal and 66 serious in same period in 2014.

HR OVERVIEW

Police Officers

	Apr 15	May 15	Jun 15	Jul 15	Aug 15	Sep 15	Oct 15	Nov 15	Dec 15	Jan 16	Feb 16	Mar 16	Apr 16
Officer Budget FTE Target	1393.0	1393.0	1393.0	1393.0	1393.0	1393.0	1393.0	1393.0	1393.0	1393.0	1393.0	1393.0	1393.0
Actual/ Projected Num inc recr'ment	1382.37	1387.02	1380.01	1374.27	1365.93	1360.21							

The actual number of Officers has decreased in August 2015 by 5.72 FTE officers.

Police Cadet Scheme

The selection process for the Police Cadet scheme has recently been finalised, this pilot scheme will commence on 23 September and will see 40 new cadets start in York. Depending on the success of this pilot there may be potential to roll the scheme out across other force areas.

PCSO

	Apr 15	May 15	Jun 15	Jul 15	Aug 15	Sep 15	Oct 15	Nov 15	Dec 15	Jan 16	Feb 16	Mar 16	Apr 16
PCSO Budget FTE	183.0	183.0	183.0	183.0	183.0	183.0	183.0	183.0	183.0	183.0	183.0	183.0	183.0
Actual/ Projected Num inc recr'ment	197.98	197.52	197.52	195.52	194.46	194.46							

The actual number of PCSO's remained the same as the previous month.

NOT PROTECTIVELY MARKED

OP READINESS

Police Officers	Projected Target 31.08.2015 (Version 7)	Actual Number of Officers FTE 01.08.2015	% Variance	Current Sickness	Adoption Leave	Maternity Adjustment	Maternity Leave	Recuperative Duties	Restricted Duties	% Operational Readiness of Actual Officer FTE	% Operational Readiness of Projected Target FTE
NYP Local Policing Total	905.00	883.44	-2.38	56.41	1.00	5.83	11.12	18.94	0.00	89.44%	87.31%
NYP Specialist Ops & Logistics Total	245.00	237.77	-2.95	9.00	0.00	0.00	1.00	8.00	0.00	92.43%	89.70%
NYP Safeguarding Total	43.00	42.49	-1.20	1.00	0.00	0.00	0.90	0.00	0.00	95.53%	94.38%
All Others Total	199.00	196.52	-1.25	6.00	0.00	0.00	1.00	6.64	2.00	92.04%	90.90%
Grand Total	1392.00	1360.21	-2.28	72.41	1.00	5.83	14.02	33.57	2.00	90.53%	88.46%

NOT PROTECTIVELY MARKED

HR OVERVIEW

Specials

	Apr 15	May 15	Jun 15	Jul 15	Aug 15	Sep 15	Oct 15	Nov 15	Dec 15	Jan 16	Feb 16	Mar 16	Apr 16
Specials Budget FTE	260.00	260.00	260.00	260.00	286.00	286.00	286.00	286.00	286.00	286.00	286.00	286.00	286.00
Actual Specials FTE	185.00	177.00	172.00	171.00	170.00	189.00							

The actual number of Special Constables has increased in August 2015 by 19.

23 Special Constables commenced with NYP on 8th August 2015.

The next in take of 28 Special Constables is scheduled for December 2015.

Staff

	Apr 15	May 15	Jun 15	Jul 15	Aug 15	Sep 15	Oct 15	Nov 15	Dec 15	Jan 16	Feb 16	Mar 16	Apr 16
Staff Budget	1034.4	1035.2	1034.4	1028.4	1028.4	1027.4	1019.4	1018.4	1018.4	1018.4	1018.4	1017.4	1034.4
Permanent Staff FTE	912.98	913.93	916.52	912.88	915.32	915.93							
Temporary Staff FTE (not including agency)	65.07	69.62	65.62	69.30	63.30	58.02							
Agency Staff FTE	33.50	30.00	28.22	31.74	36.74	35.32							
Total Staff against budget FTE	1011.55	1013.55	1010.36	1013.92	1015.36	1009.27							

NOT PROTECTIVELY MARKED

HR OVERVIEW

The Staff Budget has been adjusted for 2015/ 2016. Police staff roles fluctuate in accordance with organisational priorities and requirements. The approach to police staff workforce profiling is to explore opportunities where flexible resources can be utilised specifically to deliver key pieces of work.

The total number of actual Staff has decreased by 6.09 FTE from the previous month.

The number of agency staff has decreased by 1.42 FTE since the previous month:

- 17.08 x agency staff are in supernumerary posts.
- 18.24 x agency staff are backfill or interim postings against established posts (includes part time agency staff).

The current number of Staff vacancies is 19.

Volunteers

	Apr 15	May 15	Jun 15	Jul 15	Aug 15	Sep 15	Oct 15	Nov 15	Dec 15	Jan 16	Feb 16	Mar 16	Apr 16
Volun- teers	176.00	177.00	178.00	179.00	177.00	179.00							

Deployment of volunteers:-

The 179 volunteers are broken down into the following roles

1 Chief Officer – Citizens in Policing

1 - Head of Volunteering

1 - Deputy Head of Volunteering

6 - Volunteer Advisors’.

40 - Front Counter Support

130 - Volunteers are Safer Neighbourhood Support

It has been agreed that NYP will be running a recruitment campaigns for a number of volunteer vacancies. We are currently progressing the following volunteers roles:

- Community Safety Volunteer
- Call Quality Monitor Volunteers
- Survey Analyst Volunteers
- Driver Volunteers
- Vehicle Checkers

Please note:

That the above figures include Secondments Out of Force but exclude Career Break Staff.

NOT PROTECTIVELY MARKED

GLOSSARY

READING THE PERFORMANCE DATA

- The numbers shows performance against the previous year
- The dashboard graphic for operational crime, ASB and KSI data is an assessment of the latest month against a normal month based on the 2014/15 reporting period. The position of the needle describes the month results relative to a linear average. This allows for factors such as seasonal trends or the impact of single one off events to be explained. As the desired direction of travel can be up or down (e.g. increasing crime is negative but an increasing resolution % positive) the graphics alternate the red/green colouring accordingly.

GLOSSARY

- ASB = Anti-Social Behaviour
- Crimes Against Society = These are crimes which do not have a "named victim" i.e.. the offence is against The Crown. These are usually (but not always) are as the direct result of police intervention/proactivity e.g a drugs operation. In North Yorkshire & City of York approx 10% of crimes are "Against Society" therefore it is important to make the clear distinction from Victim Based Crime.
- Fraud Offences = These are not included in the crime statistics as they are not reported by forces to the Home Office. Instead these crimes are passed to Action Fraud and statistics are collated by that agency
- I Grade = priority assigned by control room for an incident requiring ImmEDIATE police response
- KSI = A casualty Killed or Seriously Injured as a result of a Road Traffic Collision on a public road
- MCU = Major Crime Unit
- MO = Modus Operandi
- OPL = Over Prescribed Limit typically the term used to describe failing a breath test
- P&CP = Police & Crime Plan document setting out the Police & Crime Commissioner's priorities
- PCC = Police & Crime Commissioner
- PCSO = Police Community Support Officer
- PSG = Performance Steering Group is an internal meeting chaired by a Chief Officer monitoring statistics & trends
- Resolved Outcome = A crime where an offender has been dealt with through sanction or restorative justice.
- Sanction Detection = A historical method of looking at how crimes were resolved. A sanction detection includes where an offender is Charged, Cautioned, given a Penalty Notices for Disorder or Cannabis Warning or Fixed Penalty Notices, and where an offender has crimes Taken Into Consideration (TIC - see below).
- TIC = Taken Into Consideration is typically where an offender admits to further offences to avoid potentially being pursued for these at a later date.
- TTCG = Tactical Tasking & Co-ordination Group is an internal meeting which directs resources to tackle specific problems