

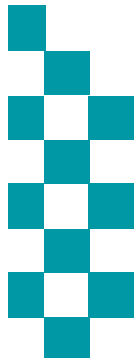
Corporate Performance & Scrutiny Group

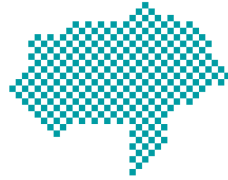


Meeting: Tuesday 26th January

Reporting Period: 1st Apr 15 → 31st Dec 15

NB: Statistics remain provisional and subject to change





INTRODUCTION



Reporting Period: 01/04/2015 → 31/12/2015

Contents:

- The Results: Current Performance levels
 1. Headline overview statistics
 2. Crimes & ASB statistics (including stats by District council area)
 3. Road Traffic Collision casualties
- The People: HR/headcount information

Recommendations:

- The Group notes the contents and current position

Actions arising from this meeting in response to scrutiny:

-

Glossary of Terms

- Please final page in document

Time Periods

- Unless indicated otherwise statistics are presented by financial year

Performance Monitoring/Management and Operational Priorities

- At a strategic level this meeting (The Corporate Performance & Scrutiny Group) and Executive Board consider performance in the broader context of financial and people data and consider progress against the delivery of the Police and Crime Plan
- The force runs its Tactical Tasking & Co-ordination Group (TTCG) meeting on a 3 month cycle rather than monthly. This meeting looks predicted operational matters some 3 to 6 months in the future. Local TTCG meetings also run quarterly
- The Performance Steering Group now sits with the Operational Delivery Board meeting which also monitors progress against business plans and activity around HMIC inspections

EXECUTIVE SUMMARY

December 2015 Dashboard

Total Crime Recorded



Victim Based Crimes recorded



Anti-Social Behaviour Incidents Reported



Killed Seriously Injured Casualties



% Victims Satisfied



% public w ho believe NYP/Councils deal w ith



% public w ho are Confident in NYP



2015/16	28325	2015/16	25382	2015/16	23157	2015	420	2015	83.1%	2015	66.50%	2015/16	2015
v 14/15	6.9%	v 14/15	8.8%	v 14/15	-6.6%	v 2014	10.0%	v 2014	-3.4%	v 2014	-3.8%	v 2014	3.7%
v 13/14	6.9%	v 13/14	7.2%	v 13/14	-6.6%	v 2013	13.5%	v 2013	-5.0%	v 2013	0.7%	v 2013	4.4%

Summarised commentary on current trends

Flooding

- During December and into January parts of North Yorkshire and the City of York experienced significant levels of flooding. NYP chaired the Strategic Co-ordinating Group to lead a multi-agency response. During the course of the operation Emergency Services and partner agencies including the military checked hundreds of homes, evacuating people where necessary and provided reassurance to residents in York and Selby areas.
- NYP will continue to carry out high-visibility patrols in the flood-hit areas to help keep homes and property safe and secure, and media messages have urged the public to avoid potential tragedy by strictly abiding by the road and bridge closures

Crime

- NYP has the lowest crime per 1000 population in England based on a rolling 12 month position
- In the main most crime types remain within tolerance. The current long term exceptions are Violence Without Injury and Criminal Damage, though in December a rise in Assaults with Injury has been seen in the run up to Christmas.
- Ongoing major crime investigations

ASB

- is down by 6.6% on last year. Current trends are all within tolerance

Killed Seriously Injured (KSI) casualties

- Shows a reduction against previous years

Satisfaction

- Satisfaction remains high with more than 8 in 10 victims satisfied with service. The satisfaction levels for victims of auto crime remains under scrutiny with the latest results for November and December surveying suggesting small improvements are being made.

Public Confidence

- in police remains high based on latest national dataset.
- The next series of **ACC Kennedy's Performance Conferences** will focus on higher risk areas of Domestic Abuse and Child Sexual Exploitation

CRIME / ASB / PSW v PREVIOUS YEARS VOLUME CHANGE

RECORDED CRIME STATISTICS		2013/14	2014/15	2015/16	Diff 15/16 v 14/15		Diff 15/16 v 13/14		Trend
Victim Based	Arson & Criminal Damage	4326	3899	4457	558	14.3%	131	3.0%	
	Burglary: Burglary Dwelling	1201	1049	1146	97	9.2%	-55	-4.6%	
	Burglary: Burglary Non Dwelling	2022	1947	2024	77	4.0%	2	0.1%	
	Robbery	87	105	129	24	22.9%	42	48.3%	
	Sexual Offences: Other	363	543	603	60	11.0%	240	66.1%	
	Sexual Offences: Rape	157	235	281	46	19.6%	124	79.0%	
	Theft: All Other Theft	4258	3892	3694	-198	-5.1%	-564	-13.2%	
	Theft: Bicycle Theft	1193	1018	1094	76	7.5%	-99	-8.3%	
	Theft: Shoplifting	2982	2993	3069	76	2.5%	87	2.9%	
	Theft: Theft From Person	401	417	392	-25	-6.0%	-9	-2.2%	
	Vehicle Offences	2005	1685	1742	57	3.4%	-263	-13.1%	
	Violence: Violence With Injury	2887	3008	3537	529	17.6%	650	22.5%	
	Violence: Violence Without Injury	1785	2544	3214	670	26.3%	1429	80.1%	
	Total	23667	23335	25382	2047	8.8%	1715	7.2%	
Crimes Against Society	Drugs: Possession Of Drugs	1193	1364	1205	-159	-11.7%	12	1.0%	
	Drugs: Trafficking Of Drugs	186	232	200	-32	-13.8%	14	7.5%	
	Misc Crimes Against Society	305	423	408	-15	-3.5%	103	33.8%	
	Possession Of Weapons	137	182	132	-50	-27.5%	-5	-3.6%	
	Public Order Offences	1003	967	998	31	3.2%	-5	-0.5%	
	Total	2824	3168	2943	-225	-7.1%	119	4.2%	
Total	26491	26503	28325	1822	6.9%	1834	6.9%		

Slide Summary

This slide shows **volume change** across the last 3 years.

Victim Based Crime

- is up on previous years

Anti-Social Behaviour

- is down on the previous years

Public Safety & Welfare

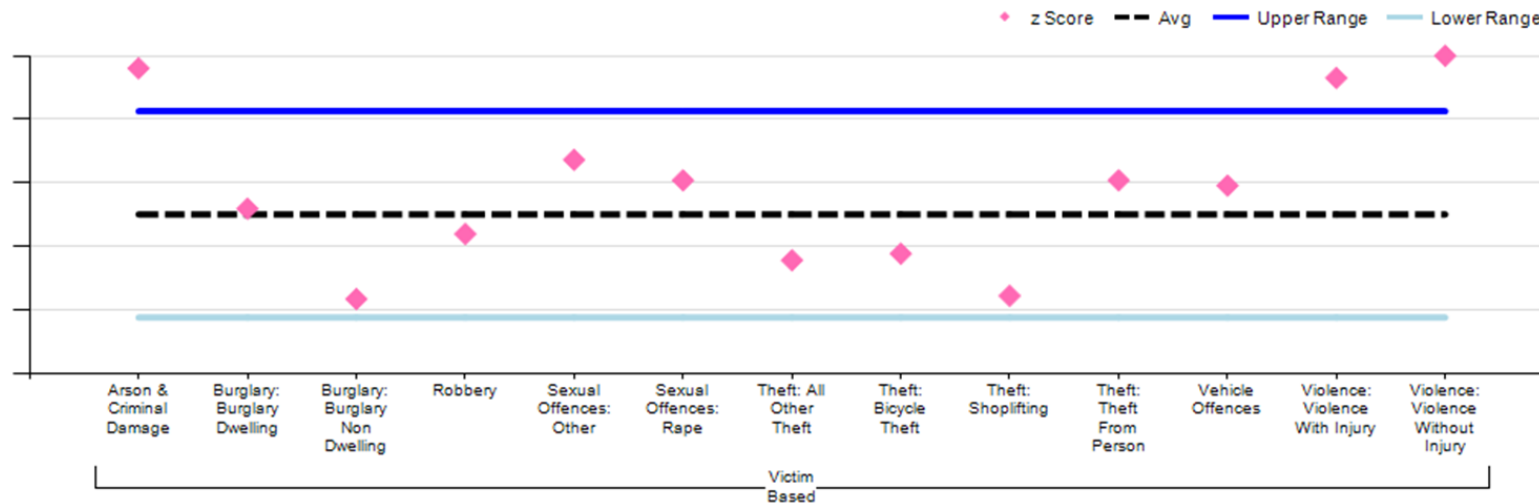
- is up by almost 3% on last year.

NON CRIME STATISTICS		2013/14	2014/15	2015/16	Diff 15/16 v 14/15		Diff 15/16 v 13/14		Trend
ASB	Total	24806	24790	23157	-1633	-6.6%	-1649	-6.6%	
PSW	Total	56849	57818	59516	1698	2.9%	2667	4.7%	
NOT PROTECTIVELY MARKED									

EXCEPTION BANDING: VICTIM BASED CRIME

◆ Represents Crime levels recorded in the last month, Data is normalised to allow crime groups with different volumes (e.g. robbery and criminal damage) to be presented on same graph. Crime levels can be described as normal if they fall between the blue lines with movement in this range likely to be random fluctuations.

Distribution of CRIME against normal levels



In the main monthly crime volumes remain within respective normal ranges. Although the previous slide details some volume changes in crime levels over the current financial year to date many of the crime levels remain within tolerance and not form part of any identified long term trends.

Violence with injury

- Is in exception following a spike in December (404 crimes compared to expected maximum level of 384 crimes).
- Offences predominantly on a weekend (mainly assault offences including those with a domestic element) in the run up to Christmas, with levels in Scarborough and York being higher than usual
- It is likely this level will return to normal range next month.

The following two crime groups have remained in exception since April

Violence without injury

- remains in exception. The main factors behind the rise are: improved compliance with national crime recording standards, increases in recording of harassment following introduction of new Harassment Notice processes, counting of malicious communications within this group whereas previously this would have been recorded as ASB, increase in confidence of victims of domestic abuse to come forward.
- NYP follows the national and MSF average although current trends show our increases are at a smaller rate.

Criminal Damage

- remains in exception although the monthly volume in November has dropped back within normal range. NYP follows the national and MSF average and assessment of these show a number of forces experiencing a step-change in volume from April 2015 which points to the impact of shorter time periods to "crime" an incident. Long term trends show that NYPs crime levels last year were much lower than normal.

NYP'S TACTICAL RESPONSE

	Acquisitive Crime (inc Burglary Dwelling & Non Dwelling, Theft)	Criminal Damage	Violence W/Injury	Vio W/out Injury
Craven Hamble Richm H'gate	<ul style="list-style-type: none"> •Op RAM - X Border working in Hgte re Dwelling Burglary •Outcomes: Multiple arrests, charges & court process ongoing. West Yorks nominals dealt with for conspiracy •Op SHREWD running in Hamb Rich to coordinate local response •Op SIFT rural burglaries in Hgte •Op HAWK in Craven providing additional resources & equipment •Use of ANPR & Roads Crime Team and Targeted local patrols •Crime prevention & education with Community Safety Partners •Op CHECKPOINT – regional deployment x border criminals •Op FEROX – rural crime in Hamb/Rich 	<ul style="list-style-type: none"> •Sporadic offending •Local tactics in place 	<p>NB: Crime increases strongly linked to improved recording practices</p>	
Scarboro Ryedale	<ul style="list-style-type: none"> •Op SHUDDER . Targets x border criminality for burglary & theft in rural areas. Support from specialist units. Tactics include proactive stop checks . •Outcome: Arrests made including one person charged with 13 offences & remanded •Op RASCAL targets shoplifters in run up to xmas. 	<ul style="list-style-type: none"> •Op AMBIENCE in Castle & North Bay. •Multi- Agency response. •Outcomes: Alcohol & tobacco seizures. Signposting adult rough sleepers & street drinkers to appropriate services 	<ul style="list-style-type: none"> •High Vis proactive policing in Night Time Economy & drugs dog operations •Bid for an outreach worker to deal with low/standard risk Domestic Abuse. •Brief interventions in Custody to divert people away from heavy alcohol use 	<ul style="list-style-type: none"> •New Psychoactive Substances (NPS) outreach worker working with most prolific offenders to address substance misuse. •NPS education in schools •Op SIKA running in Filey, Whitby & Ryedale on Sat nights in December
York Selby	<ul style="list-style-type: none"> •Op JELLYFISH / YETO regional op focusing on burglaries at farms and theft of cables. •Targeting of known offenders. •Proactive High Vis & Plain clothes patrols at key times •Op JOYPAD targeting crime prevention advice at insecure properties incl Joint patrols with students and Uni Security Team •Dot Peen property marking •Education work with bus companies, shops & local projects 	<ul style="list-style-type: none"> •Targeted patrols 	<ul style="list-style-type: none"> •Op ERASE & Op SAFARI continue (alcohol related violence) •Working with British Transport Police & train companies •Door staff briefings 	<ul style="list-style-type: none"> •Passive drugs dog exercises •Targeting of problematic locations with licensing team •Dispersal powers

NYP'S TACTICAL RESPONSE

Operation Hawk

- Operation Hawk is an NYP initiative to tackle travelling criminality and rural crime with the emphasis on the patrolling of our borders and targeting of vehicles and persons involved in criminal activities.
- Local officers are supported on OP Hawk by Roads Policing, Firearms and Neighbourhood Support Teams when they are not committed with their primary role. A significant contribution to Op Hawk is provided by the two Road Crime Teams on which is based at Tadcaster and the other at Thirsk , Since 1st July 2015, the Road Crime Teams have arrested over 220 offenders whilst deployed to Operation Hawk.
- Recent successes as a result of Operation Hawk deployments include –
 - A male from West Yorkshire, alleged to be involved in over 22 dwelling burglaries throughout NYP area, being arrested on the M62 having committed another offence within the Humberside area.
 - The interception of two vehicles travelling along the A1 in the north of our county which contained ten females that were being trafficked into the sex industry from Eastern Europe. Members of an organised crime group were detained and the victims taken to a place of safety.
 - Arrest of a male travelling in the Hambleton area whilst possession of a large amount of Heroin and a substantial amount of cash.
 - Two males detained whilst travelling along the A59 between Harrogate and York who had been involved in ten separate offences of theft at various locations around the force area during that day.

Operation Checkpoint

- In support of our regional surrounding forces, North Yorkshire Police has taken an active role in Operation Checkpoint which targets criminals that are active throughout the region utilising not only local and specialist officers but also local volunteers involved in various watch schemes. There have been four joint operations this year which has resulted in over 440 vehicles being stopped and 17 persons arrested for offences ranging from theft to drug possession within the NYP area.

VICTIM BASED CRIME BY DISTRICT v PREVIOUS YEARS

NO OF CRIMES	2015/16	
HAMBLETON	2000	
CHANGE 15/16 v 14/15	200	11.1%
CHANGE 15/16 v 13/14	105	5.5%

NO OF CRIMES	2015/16	
RICHMONDSHIRE	993	
CHANGE 15/16 v 14/15	-83	-7.7%
CHANGE 15/16 v 13/14	-157	-13.7%

NO OF CRIMES	2015/16	
RYEDALE	1095	
CHANGE 15/16 v 14/15	73	7.1%
CHANGE 15/16 v 13/14	80	7.9%

NO OF CRIMES	2015/16	
HARROGATE	4179	
CHANGE 15/16 v 14/15	156	3.9%
CHANGE 15/16 v 13/14	211	5.3%

NO OF CRIMES	2015/16	
SCARBOROUGH	5159	
CHANGE 15/16 v 14/15	377	7.9%
CHANGE 15/16 v 13/14	777	17.7%

NO OF CRIMES	2015/16	
CRAVEN	1376	
CHANGE 15/16 v 14/15	214	18.4%
CHANGE 15/16 v 13/14	35	2.6%

NO OF CRIMES	2015/16	
YORK	8171	
CHANGE 15/16 v 14/15	892	12.3%
CHANGE 15/16 v 13/14	377	4.8%

• In addition to Criminal Damage and Violence which are seen across the force area , the main localised exceptions are:

- Burglary Non Dwelling and Vehicle Crime in York

NO OF CRIMES	2015/16	
SELBY	2365	
CHANGE 15/16 v 14/15	200	9.2%
CHANGE 15/16 v 13/14	259	12.3%

The above is a presentation of year on year statistics. For latest local data displayed on a map for your area go to www.police.uk and enter your postcode

NOTABLE INVESTIGATIONS

Update from Major Crime Unit (MCU)

Op Neutron

- robbery / aggravated burglary in Knaresborough

Op Overcast

- murder in York.

Op Hoe

- peanut allergy case – Awaiting trial.

Op Essence

- Claudia LAWRENCE

Op Ram

- Complex blackmail

Op Shortbread

- murder in Thirsk in November

Op Wain – Cold Case Review

- Murder investigation from 2005 - the case will be subject to a full forensic review in order to establish any feasible line of enquiry as a result in advancement of the DNA process. This case is being managed as part of the overall cold case review function of the Major Crime Unit.

Industrial death

- Joint investigation with Health & Safety Executive

ASB BY DISTRICT v PREVIOUS YEARS

NO OF ASB	2015/16	
HAMBLETON	1807	
CHANGE 15/16 v 14/15	-163	-8.3%
CHANGE 15/16 v 13/14	-217	-10.7%

NO OF ASB	2015/16	
RICHMONDSHIRE	1060	
CHANGE 15/16 v 14/15	-55	-4.9%
CHANGE 15/16 v 13/14	-63	-5.6%

NO OF ASB	2015/16	
RYEDALE	881	
CHANGE 15/16 v 14/15	-78	-8.1%
CHANGE 15/16 v 13/14	-153	-14.8%

NO OF ASB	2015/16	
SCARBOROUGH	5250	
CHANGE 15/16 v 14/15	-348	-6.2%
CHANGE 15/16 v 13/14	-191	-3.5%

NO OF ASB	2015/16	
HARROGATE	3681	
CHANGE 15/16 v 14/15	-527	-12.5%
CHANGE 15/16 v 13/14	-325	-8.1%

NO OF ASB	2015/16	
CRAVEN	920	
CHANGE 15/16 v 14/15	-63	-6.4%
CHANGE 15/16 v 13/14	-243	-20.9%

NO OF ASB	2015/16	
YORK	7237	
CHANGE 15/16 v 14/15	-370	-4.9%
CHANGE 15/16 v 13/14	-385	-5.1%

- ASB is down on the previous year by almost 7%

- There is no link between the fall in ASB and the rise in Criminal Damage in respect of recording standards. A review by the Force Crime & Incident Registrar found no significant issues.

NO OF ASB	2015/16	
SELBY	2208	
CHANGE 15/16 v 14/15	-38	-1.7%
CHANGE 15/16 v 13/14	-96	-4.2%

CASUALTIES KILLED OR SERIOUSLY INJURED FROM ROAD TRAFFIC COLLISIONS

		YTD	+/- Change		Rolling Qtr	
Key Performance Indicator		2015	on 2014	on 2013	Qtr	+/-
	Killed or Seriously Injured casualties from RTCs:	420	-47 (-10%)		105	3 (3%)
	Motorcyclist KSI casualties from RTCs:	95	-4 (-4%)		23	2 (10%)
	Child (= <16) KSI casualties from RTCs:	19	-6 (-24%)		7	0 (0%)
	Cyclist KSI casualties from RTCs:	60	-28 (-32%)		11	-8 (-42%)

- Please note these are provisional data for the period 1st January to 30th November 2015.
- Long term the trend in KSIs is down. **No emerging issues of note.**
- The provisional stats show a reduction on the previous years:
 - All KSI = 32 fatal and 388 serious against 39 fatal and 428 serious in same period in 2014.
 - Motorcycle = 13 fatal and 82 serious against 11 fatal and 88 serious in same period in 2014.
 - Pedal cyclist = 4 fatal and 56 serious against 3 fatal and 85 serious in same period in 2014.

HR OVERVIEW

Police Officers

	Apr 15	May 15	Jun 15	Jul 15	Aug 15	Sep 15	Oct 15	Nov 15	Dec 15	Jan 16	Feb 16	Mar 16	Apr 16
Officer Budget FTE Target	1393.0	1393.0	1393.0	1393.0	1393.0	1393.0	1393.0	1393.0	1393.0	1393.0	1393.0	1393.0	1393.0
Actual/ Projected Num inc recr'ment	1382.37	1387.02	1380.01	1374.27	1365.93	1360.21	1349.88	1343.60	1342.01				

The actual number of Officers has decreased in November 2015 by 1.59 FTE officers.

The next Student Officer intake is scheduled for March 2016.

PCSO

	Apr 15	May 15	Jun 15	Jul 15	Aug 15	Sep 15	Oct 15	Nov 15	Dec 15	Jan 16	Feb 16	Mar 16	Apr 16
PCSO Budget FTE	183.0	183.0	183.0	183.0	183.0	183.0	183.0	183.0	183.0	183.0	183.0	183.0	183.0
Actual/ Projected Num inc recr'ment	197.98	197.52	197.52	195.52	194.46	194.46	192.46	192.31	191.98				

The actual number of PCSO's has decreased by 0.33 FTE from the previous month towards the planned budgeted numbers

Due to ORIGIN upgrade and system testing the Op Readiness data is not available this month.

NOT PROTECTIVELY MARKED

HR OVERVIEW

Specials

	Apr 15	May 15	Jun 15	Jul 15	Aug 15	Sep 15	Oct 15	Nov 15	Dec 15	Jan 16	Feb 16	Mar 16	Apr 16
Specials Budget FTE	260.00	260.00	260.00	260.00	286.00	286.00	286.00	286.00	286.00	286.00	286.00	286.00	286.00
Actual Specials FTE	185.00	177.00	172.00	171.00	170.00	189.00	183.00	177.00	199.00				

The actual number of Special Constables has increased in November 2015 by 22.

25 Special Constables commenced with NYP on 28 November 2015.

Staff

	Apr 15	May 15	Jun 15	Jul 15	Aug 15	Sep 15	Oct 15	Nov 15	Dec 15	Jan 16	Feb 16	Mar 16	Apr 16
Staff Budget	1034.4	1035.2	1034.4	1028.4	1028.4	1027.4	1019.4	1018.4	1018.4	1018.4	1018.4	1017.4	1034.4
Permanent Staff FTE	912.98	913.93	916.52	912.88	915.32	915.93	914.83	911.41	910.98				
Temporary Staff FTE (not including agency)	65.07	69.62	65.62	69.30	63.30	58.02	54.76	52.39	59.60				
Agency Staff FTE	33.50	30.00	28.22	31.74	36.74	35.32	38.24	43.16	45.16				
Total Staff against budget FTE	1011.55	1013.55	1010.36	1013.92	1015.36	1009.27	1007.83	1006.96	1015.74				

NOT PROTECTIVELY MARKED

HR OVERVIEW

- The Staff Budget has been adjusted for 2015/ 2016. Police staff roles fluctuate in accordance with organisational priorities and requirements. The approach to police staff workforce profiling is to explore opportunities where flexible resources can be utilised specifically to deliver key pieces of work.

- The total number of actual Staff has increased by 8.78 FTE from the previous month.

- The number of agency staff has increased by 2 FTE since the previous month:

- 20.92 x agency staff are in supernumerary posts.

- 24.24 x agency staff are backfill or interim postings against established posts (includes part time agency staff).

Volunteers

	Apr 15	May 15	Jun 15	Jul 15	Aug 15	Sep 15	Oct 15	Nov 15	Dec 15	Jan 16	Feb 16	Mar 16	Apr 16
Volun- teers	176.00	177.00	178.00	179.00	177.00	179.00	180.00	180.00	230.00				

- Deployment of volunteers:-

- The 230 volunteers are broken down into the following roles

- 1 Chief Officer – Citizens in Policing

- 1 - Head of Volunteering

- 1 - Deputy Head of Volunteering

- 6 - Volunteer Advisors’.

- 40 - Front Counter Support

- 132 - Volunteers are Safer Neighbourhood Support

- 40 – Police Cadets

- 9 Police Cadet Leaders

- It has been agreed that NYP will be running a recruitment campaigns for a number of volunteer vacancies. We are currently progressing the following volunteers roles:

- Community Safety Volunteer

- Call Quality Monitor Volunteers

- Survey Analyst Volunteers

- Driver Volunteers

- Vehicle Checkers

NOT PROTECTIVELY MARKED

GLOSSARY

Reading the performance data

- The numbers shows performance against the previous year
- The dashboard graphic for operational crime, ASB and KSI data is an assessment of the latest month against a normal month based on the 2014/15 reporting period. The position of the needle describes the month results relative to a linear average. This allows for factors such as seasonal trends or the impact of single one off events to be explained. As the desired direction of travel can be up or down (e.g. increasing crime is negative but an increasing resolution % positive) the graphics alternate the red/green colouring accordingly.

Glossary

- ASB = Anti-Social Behaviour
- Crimes Against Society = These are crimes which do not have a “named victim” i.e.. the offence is against The Crown. These are usually (but not always) are as the direct result of police intervention/proactivity e.g a drugs operation. In North Yorkshire & City of York approx 10% of crimes are “Against Society” therefore it is important to make the clear distinction from Victim Based Crime.
- Fraud Offences = These are not included in the crime statistics as they are not reported by forces to the Home Office. Instead these crimes are passed to Action Fraud and statistics are collated by that agency
- I Grade = priority assigned by control room for an incident requiring ImmEDIATE police response
- KSI = A casualty Killed or Seriously Injured as a result of a Road Traffic Collision on a public road
- MCU = Major Crime Unit
- MO = Modus Operandi
- OPL = Over Prescribed Limit typically the term used to describe failing a breath test
- P&CP = Police & Crime Plan document setting out the Police & Crime Commissioner’s priorities
- PCC = Police & Crime Commissioner
- PCSO = Police Community Support Officer
- PSG = Performance Steering Group is an internal meeting chaired by a Chief Officer monitoring statistics & trends
- Resolved Outcome = A crime where an offender has been dealt with through sanction or restorative justice.
- Sanction Detection = A historical method of looking at how crimes were resolved. A sanction detection includes where an offender is Charged, Cautioned, given a Penalty Notices for Disorder or Cannabis Warning or Fixed Penalty Notices, and where an offender has crimes Taken Into Consideration (TIC - see below).
- TIC = Taken Into Consideration is typically where an offender admits to further offences to avoid potentially being pursued for these at a later date.
- TTCG = Tactical Tasking & Co-ordination Group is an internal meeting which directs resources to tackle specific problems