



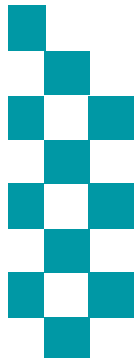
Corporate Performance & Scrutiny Group



Meeting: 23rd August 2016

Reporting Period: April – July 2016

NB: Statistics remain provisional and subject to change



BE SAFE
FEEL SAFE



INTRODUCTION



Reporting Period: Apr – July 2016

Contents:

- The Results: Current Performance levels
 1. Headline overview statistics
 2. Crimes & ASB statistics (including stats by District council area)
 3. Road Traffic Collision casualties
- The People: HR/headcount information

Recommendations:

- The Group notes the contents and current position

Actions arising from this meeting in response to scrutiny:

-

Glossary of Terms

- Please see final page in document

Time Periods

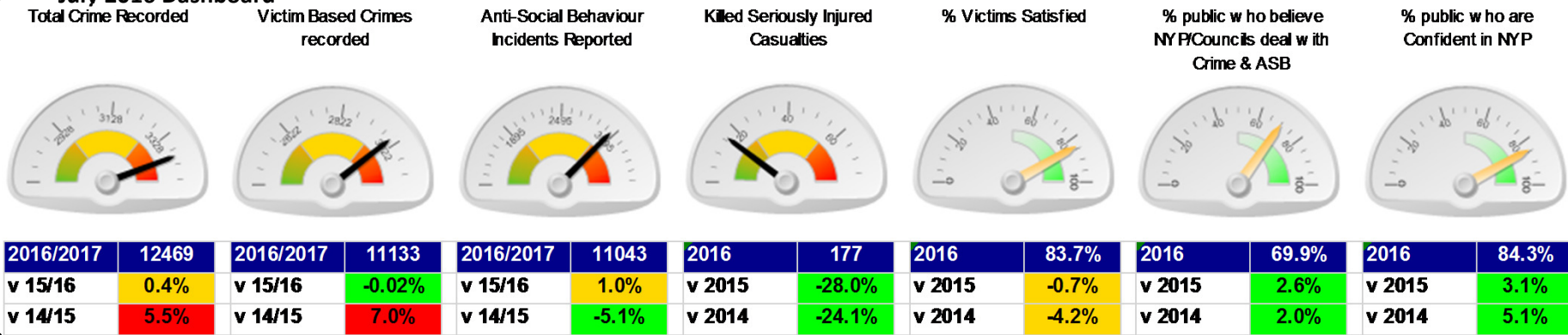
- Unless indicated otherwise statistics are presented by financial year

Performance Monitoring/Management and Operational Priorities

- At a strategic level this meeting (The Corporate Performance & Scrutiny Group) and Executive Board consider performance in the broader context of financial and people data and consider progress against the delivery of the Police and Crime Plan
- The force runs its Tactical Tasking & Co-ordination Group (TTCG) meeting on a 3 month cycle rather than monthly. This meeting looks at predicted operational matters some 3 to 6 months in the future. Local TTCG meetings also run quarterly
- The Performance Steering Group now sits with the Operational Delivery Board meeting which also monitors progress against business plans and activity around HMIC inspections

EXECUTIVE SUMMARY

July 2016 Dashboard



Summarised commentary on current trends

Crime & ASB

- NYP has one of the lowest crime rates per 1000 population in England
- Levels are generally within expected tolerance. NYP is currently seeing low volumes of thefts, dwelling and non dwelling burglaries, and command areas have reported several notable arrests.
- The main exception remains 'Other' Sexual Offences (main themes being Using technology to get victims to send images , sexual assault through touching and police being informed of inappropriate relationships or underage sex).
- Violence Without Injury appears to have seen a 'blip' in volume recorded in July. There is no change in those factors which are influencing levels of this type of crime (see exception banding slide for more detail)
- ASB is in line with last year

Killed Seriously Injured (KSI) casualties

- Long term downward trend. Provisional figures show a reduction in KSIs.

Satisfaction

- Satisfaction remains high with more than 8 in 10 victims satisfied with service.

Public Confidence

- The latest data show 84.3% of the public are confident in NYP which is up by 7% from two years ago.
- For public confidence measures NYP performs well compared to similar forces and national averages.
- The next round of **Performance Conferences** chaired by ACC Lisa Winward are underway. Most recently Scarborough Command was held on 2nd August, with City Command scheduled for October. These conferences allow a more detailed assessment of localised trends.

DEMAND v PREVIOUS YEARS VOLUME CHANGE

| RECORDED CRIME STATISTICS | | 2014/15 | 2015/16 | 2016/17 | Diff 16/17 v 15/16 | | Diff 16/17 v 14/15 | | Trend |
|---------------------------|-----------------------------------|--------------|--------------|-------------|--------------------|-------------|--------------------|--------------|-------|
| Victim Based | Arson & Criminal Damage | 1683 | 1960 | 1903 | -57 | -2.9% | 220 | 13.1% | |
| | Burglary: Burglary Dwelling | 497 | 488 | 484 | -4 | -0.8% | -13 | -2.6% | |
| | Burglary: Burglary Non Dwelling | 865 | 847 | 650 | -197 | -23.3% | -215 | -24.9% | |
| | Robbery | 42 | 58 | 56 | -2 | -3.4% | 14 | 33.3% | |
| | Sexual Offences: Other | 256 | 274 | 342 | 68 | 24.8% | 86 | 33.6% | |
| | Sexual Offences: Rape | 100 | 130 | 140 | 10 | 7.7% | 40 | 40.0% | |
| | Theft: All Other Theft | 1813 | 1692 | 1541 | -151 | -8.9% | -272 | -15.0% | |
| | Theft: Bicycle Theft | 475 | 438 | 495 | 57 | 13.0% | 20 | 4.2% | |
| | Theft: Shoplifting | 1330 | 1385 | 1409 | 24 | 1.7% | 79 | 5.9% | |
| | Theft: Theft From Person | 179 | 155 | 152 | -3 | -1.9% | -27 | -15.1% | |
| | Vehicle Offences | 753 | 741 | 749 | 8 | 1.1% | -4 | -0.5% | |
| | Violence: Violence With Injury | 1336 | 1612 | 1582 | -30 | -1.9% | 246 | 18.4% | |
| | Violence: Violence Without Injury | 1079 | 1355 | 1630 | 275 | 20.3% | 551 | 51.1% | |
| Total | 10408 | 11135 | 11133 | -2 | 0.0% | 725 | 7.0% | | |
| Crimes Against Society | Drugs: Possession Of Drugs | 650 | 541 | 464 | -77 | -14.2% | -186 | -28.6% | |
| | Drugs: Trafficking Of Drugs | 86 | 93 | 113 | 20 | 21.5% | 27 | 31.4% | |
| | Misc Crimes Against Society | 169 | 151 | 215 | 64 | 42.4% | 46 | 27.2% | |
| | Possession Of Weapons | 79 | 54 | 70 | 16 | 29.6% | -9 | -11.4% | |
| | Public Order Offences | 432 | 442 | 474 | 32 | 7.2% | 42 | 9.7% | |
| | Total | 1416 | 1281 | 1336 | 55 | 4.3% | -80 | -5.6% | |
| Total | 11824 | 12416 | 12469 | 53 | 0.4% | 645 | 5.5% | | |

Slide Summary

This slide shows **volume change** across the last 3 years.

Victim Based Crime

- is in line with last year.
- The reductions in Burglary Dwelling, Non Dwelling and All Other Theft should be noted.

Anti-Social Behaviour

- is in line with previous years

Public Safety & Welfare

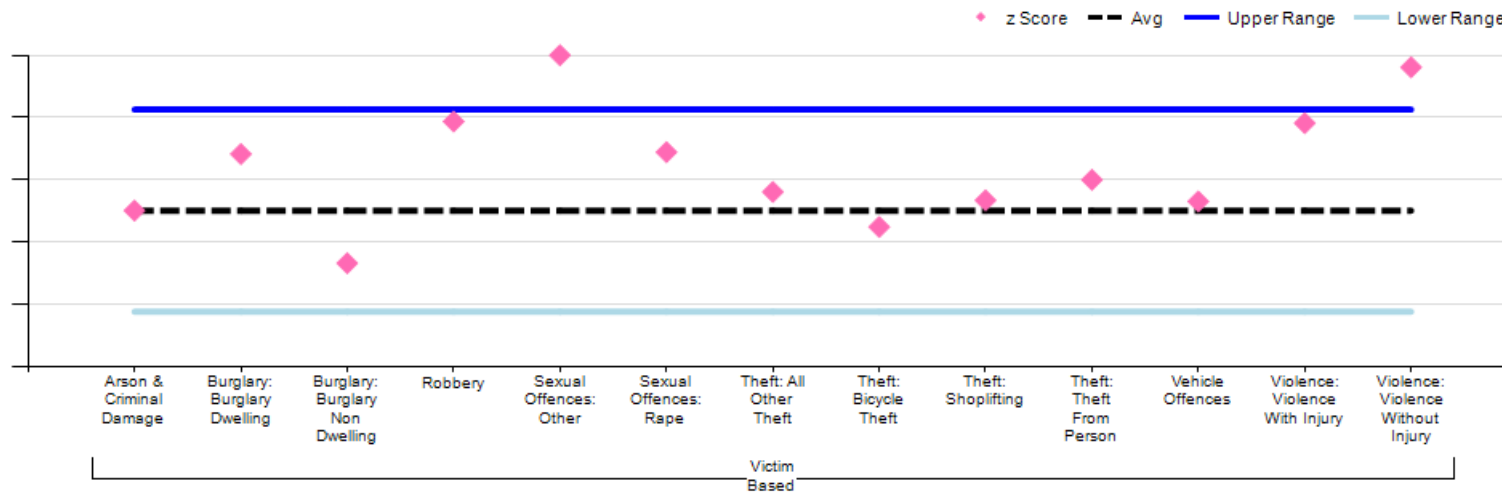
- is up on last two years – this is linked to the recording of Safeguarding and Info sharing data as a PSW incident .

| NON CRIME STATISTICS | | 2014/15 | 2015/16 | 2016/17 | Diff 16/17 v 15/16 | | Diff 16/17 v 14/15 | | Trend |
|----------------------|--------------|--------------|--------------|--------------|--------------------|-------------|--------------------|--------------|-------|
| ASB | Total | 11635 | 10939 | 11043 | 104 | 1.0% | -592 | -5.1% | |
| PSW | Total | 25661 | 26176 | 27222 | 1046 | 4.0% | 1561 | 6.1% | |

FORCEWIDE EXCEPTION BANDING: VICTIM BASED CRIME

◆ Represents Crime levels recorded in the last month , Data is normalised to allow crime groups with different volumes (e.g. robbery and criminal damage) to be presented on same graph. Crime levels can be described as normal if they fall between the blue lines with movement in this range likely to be random fluctuations.

Distribution of CRIME against normal levels



This slide considers the current month in the context of the normal variations in crime levels. Those crimes which sit outside tolerance are summarised below. NB: These are considered in more detail at the monthly Operations Board and command Performance Conferences.

“Other” Sexual Offences

- In exception based on a higher than usual volume of crimes being recorded in last 3 months
- The crime volumes recorded each month do fluctuate but the general long term trend is upwards. 40 forces have seen an upward trend. **NYP are not an outlier compared to national or most similar forces (MSF)**. Forecast to continue to rise. Main themes are:
 - Using technology to get victims to send images
 - sexual assault through touching
 - police being informed of inappropriate relationships or underage sex.

Violence Without Injury

- NYP one of 43 forces recording an increase but this increase is not statistically significant compared to national and MSF
- But in context NYP remains one of the lowest areas for Violence per 1000 population. Increase is impacted by:
 - Compliance with NCRS
 - Increase in recording of Domestic Abuse (over 1/2 of the increase is Domestic related)
 - Victim Confidence
 - Recording of Historical crimes
 - Introduction of new HIN processes in October 2013 this brings this ‘tool’ to the fore and the number of harassment crimes recorded has increased since.
 - Impact of Malicious Communications now being recorded as a crime when previously it was recorded as ASB

NYP'S TACTICAL RESPONSE

| | Property Crime (theft & damage) | Crimes against the Person |
|---------------------------|---|--|
| Cra Ham Rich Hgt | <ul style="list-style-type: none"> • Op HAVEN – County burglaries. Specialist ops have been involved in proactivity in County over the last month, concentrating on the Southern border of Harrogate area around Pool Bridge, and the A66 border in Richmondshire • Op HAWK – Craven burglaries to be supplemented by an updated Op CHECKPOINT – regional deployment x border criminals. Focus on Quad bike thefts in Craven • Op FEROX – rural crime in Hamb/Rich including Landrover crime. This works with our watch schemes to have day/nights of action throughout the year. RPG and NST patrols to coincide with Appleby Fair. | <p>NB: Crime increases strongly linked to improved recording practices</p> <ul style="list-style-type: none"> • Op SIERRA 2 running over duration of European Football Championships – high vis patrols to deter and intervene and respond to any high risk DV • Op TATTOO targeting CSE – patrols and intervention with potential victims |
| Scar Rye | <ul style="list-style-type: none"> • Op SHUDDER . Targets x border criminality for burglary & theft in rural areas. Support from specialist units. Tactics include proactive stop checks . Outcome: Arrests made including one person charged with 13 offences & remanded Op Hawk – regular deployments. Op AMBIENCE in Castle & North Bay. Multi agency op targeting areas of town where vulnerable children & adults have been identified & supported. Homeless people located & supported, street drinking addressed & drug dealing identified & subsequently targeted by police Op Wipeout – reducing shoplifting in Scarborough Town Centre. Consists of various facets including patrol strategy, target hardening and partnership working. | <ul style="list-style-type: none"> • Operation to respond to Domestic Abuse at peak reporting times e.g. weekend and sporting events, with uniform and specialist resource working to effectively support the victim and deal positively with suspects. Op TAUT proactive op targeting drug related violence in Scarborough. On the 18th July a suspect was arrested in possession of 160 wraps of Class A drugs and £900. That person has been charged and remanded. Op SIKA Filey, Whitby & Ryedale on Sat nights Op FOXTROT is a Trading Standards operation which is focussing on persons suspected of targeting elderly people |
| York Selb | <ul style="list-style-type: none"> • Op Hawk & Op Jellyfish – Crime prevention advice being tailored to remind home owners again of the vulnerability of this locking system particularly with addresses with high performance Audi's or VW's. • Dot Peen continues to get deployed including Sherburn Fair. • Rural watch patrols continue to support rural crime and sus circs incidents. • Engagement and reassurance continues through route 4 u, social media, community messenger and media. • Op JoyPad has checked over 16000 addresses and identified 8% insecure | <ul style="list-style-type: none"> • Op ERASE continues working with British Transport Police & train companies. Op SAFARI continues • Partnership working and relationship with licensee's, security, Nightsafe, Street Angels, Safer York Partnership • OP LIBERATE will commence this month, multi agency operation targeting on protecting vulnerable youths and preventing/suppressing ASB. NYP are working closely with CYC, Lifeline, NHS, SARC and other charity organisations to provide holistic support to individuals and communities. OP LIBERATE is complimented by OP RAPPORT which is an educational package provided to bus and taxi drivers around CSE and vulnerability. |

NYP'S TACTICAL RESPONSE

Rural Crime Task Force

- Prevention – Follow up visits by PCSO's to victims of crime, or those at risk of becoming a victim; several preventative marking events including a scheme to incorporate rural sports clubs; roll out of Horse Watch scheme across force, Heritage Watch planned for September launch
- Enforcement – Proactive patrols and arrests for series of crimes in County Command targeting high value motor vehicles . Further arrest and operation for offenders targeting HWRC force wide. Offender from OCG charged with farm theft. Op Sidekick continues. Force assistance given to Op Sift, Op Letter and Op Raptor.
- Engagement / Reassurance – Great Yorkshire, Boroughbridge, Ryedale shows engaging with community members and offering preventative advice; establishment of new Rural Watch schemes in Craven and Ryedale; proactive poaching patrols planned for Op Traverse, Galileo and Dunlin working with neighbouring forces

Operation Hawk

- Op Hawk is an NYP initiative to tackle travelling criminality and rural crime with the emphasis on the patrolling of our borders and targeting of vehicles and persons involved in criminal activities. In June, the Road Crime Team (RCT) have arrested 20 offenders, recovered 5 vehicles and seized property to the value of £39,500 (Inc. Drugs, cash and stolen vehicles). The NRCT have arrested a number of offenders, seized a number of vehicles and property. Of note:
 - The RCT working along our borders arrested a male for a 2in1 burglary.
 - A number of ANPR led stops on suspect or stolen vehicles .
 - A Pro-active Op Hawk day was carried out on the 27th July in the Harrogate/Ripon rural area utilising the RPG/FSU and NST leading to over 50 vehicle checks being carried out, 21 vehicle stops, 5 searches, 1 arrest and 1 vehicle seized.
- While not committed with their primary roles RPG/FSU/Dogs deploy onto Op Hawk as well as supporting local policing, successes include:
 - The RCT, NST and local officers are involved with a operation to arrest 2 nominals from a 2in1 Burglary in the Harrogate District. The RCT while deployed in the WYP area locate and arrest the suspect resulting in the NST searching the house after arrest seizing numerous exhibits including phones and cash.
 - Arrests of suspected burglars
 - A driver of a stolen vehicle was arrested for Theft/Fail To Stop/No Insurance/Dangerous Driving.

Operation Checkpoint

- There have been 2 Op Checkpoint days carried out so far this year, there is a further multi force operation taking place on the 5th October 2016, whereby Local officers along with Farm watch and NYP officers from the NRCT, Rural Task Force, RPG, FSU, Dog section and the NST in carrying out cross border patrols.

Other Operations

- **Op Viper** – while working with West Yorkshire Police colleagues, a pre-emptive stop fails on a stolen vehicle. The RCT , after a short pursuit , detain 2 nominals for Burglary and dangerous driving.
- **A Multi Agency Op – The DVLA/VOSA, HMRC /RPG working on the A19, resulting** in numerous leads for the HMRC and 5 immediate prohibitions for VOSA.

NOTABLE INVESTIGATIONS

Update from Major Crime Unit (MCU)

Op Wild

- Reported rape York. Investigation ongoing

Op Wembley

- Murder investigation York, Feb 2016. Trial date – 25/07/16. Defendant pleaded guilty to manslaughter and received a prison sentence of 8.5 years

Op Tarn

- Serious assault in Sherburn in Elmet in December – awaiting sentence

Op Neutron

- Robbery / aggravated burglary in Knaresborough – 5 x offenders from Leeds/Harrogate charged, trial set for September

Op Essence

- Claudia LAWRENCE

Op Wain – Cold Case Review

- Murder investigation from 2005 - This case is being managed as part of the overall cold case review function of the MCU

VICTIM BASED CRIME BY DISTRICT v PREVIOUS YEARS

| NO OF CRIMES | 2016/17 | |
|----------------------|---------|-------|
| HAMBLETON | 932 | |
| CHANGE 16/17 v 15/16 | 82 | 9.6% |
| CHANGE 16/17 v 14/15 | 154 | 19.8% |

| NO OF CRIMES | 2016/17 | |
|----------------------|---------|-------|
| RICHMONDSHIRE | 459 | |
| CHANGE 16/17 v 15/16 | 31 | 7.2% |
| CHANGE 16/17 v 14/15 | -34 | -6.9% |

| NO OF CRIMES | 2016/17 | |
|----------------------|---------|-------|
| RYEDALE | 480 | |
| CHANGE 16/17 v 15/16 | -12 | -2.4% |
| CHANGE 16/17 v 14/15 | 30 | 6.7% |

| NO OF CRIMES | 2016/17 | |
|----------------------|---------|------|
| HARROGATE | 1884 | |
| CHANGE 16/17 v 15/16 | 30 | 1.6% |
| CHANGE 16/17 v 14/15 | 107 | 6.0% |

| NO OF CRIMES | 2016/17 | |
|----------------------|---------|-------|
| SCARBOROUGH | 2257 | |
| CHANGE 16/17 v 15/16 | -40 | -1.7% |
| CHANGE 16/17 v 14/15 | 128 | 6.0% |

| NO OF CRIMES | 2016/17 | |
|----------------------|---------|-------|
| CRAVEN | 566 | |
| CHANGE 16/17 v 15/16 | -49 | -8.0% |
| CHANGE 16/17 v 14/15 | 68 | 13.7% |

| NO OF CRIMES | 2016/17 | |
|----------------------|---------|------|
| YORK | 3563 | |
| CHANGE 16/17 v 15/16 | 23 | 0.6% |
| CHANGE 16/17 v 14/15 | 304 | 9.3% |

- There are no localised exceptions of note for Victim Based Crime that sit outside those identified earlier in the presentation.

- Burglary (Dwelling and Non Dwelling) and Theft remain low across the force area

| NO OF CRIMES | 2016/17 | |
|----------------------|---------|-------|
| SELBY | 970 | |
| CHANGE 16/17 v 15/16 | -76 | -7.3% |
| CHANGE 16/17 v 14/15 | -47 | -4.6% |

The above is a presentation of year on year statistics. For latest local data displayed on a map for your area go to www.police.uk and enter your postcode

ASB BY DISTRICT v PREVIOUS YEARS

| NO OF ASB | 2016/17 | |
|----------------------|---------|------|
| HAMBLETON | 882 | |
| CHANGE 16/17 v 15/16 | 53 | 6.4% |
| CHANGE 16/17 v 14/15 | 23 | 2.7% |

| NO OF ASB | 2016/17 | |
|----------------------|---------|--------|
| RICHMONDSHIRE | 462 | |
| CHANGE 16/17 v 15/16 | -51 | -9.9% |
| CHANGE 16/17 v 14/15 | -52 | -10.1% |

| NO OF ASB | 2016/17 | |
|----------------------|---------|-------|
| RYEDALE | 411 | |
| CHANGE 16/17 v 15/16 | 5 | 1.2% |
| CHANGE 16/17 v 14/15 | -20 | -4.6% |

| NO OF ASB | 2016/17 | |
|----------------------|---------|-------|
| SCARBOROUGH | 2454 | |
| CHANGE 16/17 v 15/16 | -25 | -1.0% |
| CHANGE 16/17 v 14/15 | -241 | -8.9% |

| NO OF ASB | 2016/17 | |
|----------------------|---------|-------|
| HARROGATE | 1868 | |
| CHANGE 16/17 v 15/16 | 105 | 6.0% |
| CHANGE 16/17 v 14/15 | -146 | -7.2% |

| NO OF ASB | 2016/17 | |
|----------------------|---------|-------|
| CRAVEN | 462 | |
| CHANGE 16/17 v 15/16 | 84 | 22.2% |
| CHANGE 16/17 v 14/15 | -13 | -2.7% |

| NO OF ASB | 2016/17 | |
|----------------------|---------|-------|
| YORK | 3428 | |
| CHANGE 16/17 v 15/16 | -37 | -1.1% |
| CHANGE 16/17 v 14/15 | -173 | -4.8% |

- ASB is in line with the previous year

- There are no significant issues to report – Craven may appear an outlier but this is the result of cumulative month on month small increases. Monthly ASB volumes between April and July are all above average but within expected range.

| NO OF ASB | 2016/17 | |
|----------------------|---------|-------|
| SELBY | 1004 | |
| CHANGE 16/17 v 15/16 | -60 | -5.6% |
| CHANGE 16/17 v 14/15 | 8 | 0.8% |

CASUALTIES KILLED OR SERIOUSLY INJURED FROM ROAD TRAFFIC COLLISIONS

| | | YTD | +/- Change | |
|---------------------------|--|------------|-----------------------|---------|
| Key Performance Indicator | | 2016 | on 2015 | on 2014 |
| | Killed or Seriously Injured casualties from RTCs: | 177 | -69 (-28%) | |
| | Motorcyclist KSI casualties from RTCs: | 37 | -14 (-27%) | |
| | Child (= <16) KSI casualties from RTCs: | 6 | -4 (-40%) | |
| | Cyclist KSI casualties from RTCs: | 25 | -18 (-42%) | |

- Please note this is provisional data for the period 1st January to 30th June 16 .
- Long term the trend in KSIs is down. **No emerging issues of note.**
- The provisional stats show a decrease on the previous year:
 - All KSI = 10 fatal and 167 serious against 14 fatal and 232 serious in the same period in 2015.
 - Motorcycle = 2 fatal and 35 serious against 2 fatal and 49 serious in the same period in 2015.
 - Pedal cyclist = 1 fatal and 24 serious against 1 fatal and 42 serious in the same period in 2015.
 - Child KSI = 6 serious against 10 serious in the same period in 2015
- latest KSI IQuanta data up to the end of Dec 2015 shows that NYP are:
 - 32 Nationally and 8 in MSF for all KSIs
 - 19 Nationally and 6 in MSF for Child KSIs,

HR OVERVIEW

Police Officers

| | Apr 16 | May 16 | Jun 16 | Jul 16 | Aug 16 | Sep 16 | Oct 16 | Nov 16 | Dec 16 | Jan 17 | Feb 17 | Mar 17 | Apr 17 |
|--|---------------|---------------|---------------|---------------|---------------|---------------|---------------|---------------|---------------|---------------|---------------|---------------|-------------|
| Officer FTE Target | 1400.0 | 1400.0 | 1400.0 | 1400.0 | 1400.0 | 1400.0 | 1400.0 | 1400.0 | 1400.0 | 1400.0 | 1400.0 | 1400.0 | 1400 |
| Actual/ Projected Num inc recr'ment | 1330.00 | 1321.94 | 1329.63 | 1324.79 | 1346.12 | | | | | | | | |

The actual number of Officers has increased by 21.33 FTE from the previous month.

In last month, 20 Student Officers and 11 transferees have commenced with NYP.

It is planned that a further 100 officers will be recruited in the next financial year to meet the figure of 1400. This takes into account officers leaving the service to retire or for other reasons as well as current gaps.

PCSO

| | Apr 16 | May 16 | Jun 16 | Jul 16 | Aug 16 | Sep 16 | Oct 16 | Nov 16 | Dec 16 | Jan 17 | Feb 17 | Mar 17 | Apr 17 |
|--|--------------|--------------|--------------|--------------|--------------|--------------|--------------|--------------|--------------|--------------|--------------|--------------|--------------|
| PCSO Target FTE | 200.0 | 200.0 | 200.0 | 200.0 | 200.0 | 200.0 | 200.0 | 200.0 | 200.0 | 200.0 | 200.0 | 200.0 | 200.0 |
| Actual/ Projected Num inc recr'ment | 184.62 | 184.15 | 180.96 | 180.96 | 179.96 | | | | | | | | |

The actual number of PCSO's has decreased by 1 FTE from the previous month.

Later in 2016 a PCSO recruitment campaign will be launched with the aim of reaching the target of 200 PCSO's, as set by the PCC/Chief Constable.

HR OVERVIEW

The Staff Budget has been adjusted for 2016/ 2017, however needs to be ratified by Finance. Police staff roles fluctuate in accordance with organisational priorities and requirements. The approach to police staff workforce profiling is to explore opportunities where flexible resources can be utilised specifically to deliver key pieces of work.

The total number of actual Staff has decreased by 15.49 FTE from the previous month.

The number of agency staff has increased by 5 FTE since the previous month:

18.55 x agency staff are in supernumerary posts.

32.05 x agency staff are backfill or interim postings against established posts (includes part time agency staff).

Volunteers

| | Apr 16 | May 16 | Jun 16 | Jul 16 | Aug 16 | Sep 16 | Oct 16 | Nov 16 | Dec 16 | Jan 17 | Feb 17 | Mar 17 | Apr 17 |
|-----------------|--------|--------|--------|--------|--------|--------|--------|--------|--------|--------|--------|--------|--------|
| Volun- teers | 241.00 | 238.00 | 231.00 | 231.00 | 241.00 | | | | | | | | |

Deployment of volunteers:-

The 241 volunteers are broken down into the following roles

1 Chief Officer – Citizens in Policing

1 - Head of Volunteering

1 - Deputy Head of Volunteering

3 - Volunteer Advisors’.

34 - Front Counter Support

156 - Volunteers are Safer Neighbourhood Support

36 – Police Cadets

9 Police Cadet Leaders

GLOSSARY

Reading the performance data

- The numbers shows performance against the previous year
- The dashboard graphic for operational crime, ASB and KSI data is an assessment of the latest month against a normal month based on the 2015/16 reporting period. The position of the needle describes the month results relative to a linear average. This allows for factors such as seasonal trends or the impact of single one off events to be explained. As the desired direction of travel can be up or down (e.g. increasing crime is negative but an increasing resolution % positive) the graphics alternate the red/green colouring accordingly.

Glossary

- ANPR = Automatic Number Plate Recognition
- ASB = Anti-Social Behaviour
- Crimes Against Society = These are crimes which do not have a “named victim” i.e.. the offence is against The Crown. These are usually (but not always) are as the direct result of police intervention/proactivity e.g a drugs operation. In North Yorkshire & City of York approx 10% of crimes are “Against Society” therefore it is important to make the clear distinction from Victim Based Crime.
- Fraud Offences = These are not included in the crime statistics as they are not reported by forces to the Home Office. Instead these crimes are passed to Action Fraud and statistics are collated by that agency
- FSU = Firearms Support Unit
- I Grade = priority assigned by control room for an incident requiring ImmEDIATE police response
- KSI = A casualty Killed or Seriously Injured as a result of a Road Traffic Collision on a public road
- MCU = Major Crime Unit
- MO = Modus Operandi
- NPS = New PsychoaSubstances is the official term for Legal Highs
- NTE = Night Time Economy
- NCRS – National Crime Recording Standard
- NRCT = Northern Roads Crime Team – Roads Policing with some firearms capability
- NST = Neighbourhood Support Team – a specialist unit which is deployed around the force through tactical bidding process
- OPL = Over Prescribed Limit typically the term used to describe failing a breath test
- P&CP = Police & Crime Plan document setting out the Police & Crime Commissioner’s priorities
- PCC = Police & Crime Commissioner
- PCSO = Police Community Support Officer
- PSG = Performance Steering Group is an internal meeting chaired by a Chief Officer monitoring statistics & trends
- Resolved Outcome = A crime where an offender has been dealt with through sanction or restorative justice.
- RPG = Roads Policing Team
- Sanction Detection = A historical method of looking at how crimes were resolved. A sanction detection includes where an offender is Charged, Cautioned, given a Penalty Notices for Disorder or Cannabis Warning or Fixed Penalty Notices, and where an offender has crimes Taken Into Consideration (TIC - see below).
- TIC = Taken Into Consideration is typically where an offender admits to further offences to avoid potentially being pursued for these at a later date.
- TTCG = Tactical Tasking & Co-ordination Group is an internal meeting which directs resources to tackle specific problems