

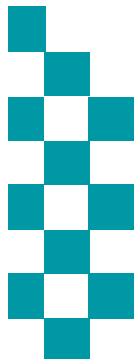
Corporate Performance, Delivery and Scrutiny Board

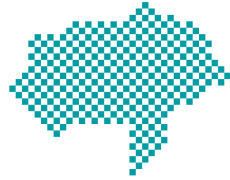


Meeting: Tuesday 26th April

Reporting Period: 2015/2016 Financial Year

NB: Statistics remain provisional and subject to change





INTRODUCTION



Reporting Period: 2015/2016

Contents:

- The Results: Current Performance levels
 1. Headline overview statistics
 2. Crimes & ASB statistics (including stats by District council area)
 3. Road Traffic Collision casualties
- The People: HR/headcount information

Recommendations:

- The Group notes the contents and current position

Actions arising from this meeting in response to scrutiny:

-

Glossary of Terms

- Please see final page in document

Time Periods

- Unless indicated otherwise statistics are presented by financial year

Performance Monitoring/Management and Operational Priorities

- At a strategic level this meeting (The Corporate Performance, Delivery and Scrutiny Board) and Executive Board consider performance in the broader context of financial and people data and consider progress against the delivery of the Police and Crime Plan
- The force runs its Tactical Tasking & Co-ordination Group (TTCG) meeting on a 3 month cycle rather than monthly. This meeting looks predicted operational matters some 3 to 6 months in the future. Local TTCG meetings also run quarterly
- The Performance Steering Group now sits with the Operational Delivery Board meeting which also monitors progress against business plans and activity around HMIC inspections

EXECUTIVE SUMMARY

March 2016 Dashboard

Total Crime Recorded

Victim Based Crimes recorded

Anti-Social Behaviour Incidents Reported

Killed Seriously Injured Casualties

% Victims Satisfied

% public w ho believe NYP/Councils deal with

% public w ho are Confident in NYP



2015/16	37452	2015/16	33595	2015/16	29683	2015/16	21	2015	83.5%	2015	67.5%	2015	82.5%
v 14/15	8.1%	v 14/15	10.1%	v 14/15	-4.0%	v 2014	0.0%	v 2014	-0.9%	v 2014	-1.1%	v 2014	1.3%
v 13/14	8.7%	v 13/14	9.1%	v 13/14	-3.8%	v 2013	-57.0%	v 2013	-3.8%	v 2013	-1.1%	v 2013	3.5%

Summarised commentary on current trends

Crime & ASB

- NYP has one of the lowest crime rates per 1000 population in England
- Crime levels are generally normal. The main exceptions (Criminal Damage & Violence Without Injury) are long term trends , which are also replicated nationally.
- Recent spikes in Obscene Images are impacted by the use of “group chat” messaging (often amongst teenagers) and other forms of social media meaning multiple offences can fall out of the same incident
- A rise in shop lifting is linked to a rise in Scarborough during Quarter 4. Offences predominantly at supermarkets/convenience stores/national retail stores with ‘food stuffs’ and ‘personal accessories’ such as cosmetics and clothing being frequently stolen.
- ASB is down by 4% on last year.

Killed Seriously Injured (KSI) casualties

- Long term downward trend. A new counting year has begun and the % change values shown above are based on provisional January & February figures only and are in line with 2014.

Satisfaction

- Satisfaction remains high with more than 8 in 10 victims satisfied with service. The satisfaction levels for victims of auto crime show continued small improvements are being made. NYP acknowledges there is still more work to do in this area.

Public Confidence

- The latest data released in January 2016 shows 82.5% of the public are confident in NYP. Citizen panel data for the County Council area show perceptions of safety have not changed significantly in the last year with over 80% feeling safe at night and 95% in the day.
- The current series of **ACC Kennedy’s Performance Conferences** continues with conferences held in the Three Command areas, the Control Room, Major Crime, Criminal Justice and Specialist Operations. An Intel conference is scheduled for 21st April. The themes have been the higher risk areas of Vulnerability (incl Domestic Abuse , Missing from Home and Child Sexual Exploitation) and use of bail. The conferences allow for more in-depth focus and scrutiny than would normally be possible at the monthly Operations Board. A further round is scheduled between 25th May and 14th June.

DEMAND v PREVIOUS YEARS VOLUME CHANGE

RECORDED CRIME STATISTICS		2013/14	2014/15	2015/16	Diff 15/16 v 14/15		Diff 15/16 v 13/14		Trend
Victim Based	Arson & Criminal Damage	5614	5098	5956	858	16.8%	342	6.1%	
	Burglary: Burglary Dwelling	1568	1368	1503	135	9.9%	-65	-4.1%	
	Burglary: Burglary Non Dwelling	2654	2593	2656	63	2.4%	2	0.1%	
	Robbery	117	148	151	3	2.0%	34	29.1%	
	Sexual Offences: Other	487	716	818	102	14.2%	331	68.0%	
	Sexual Offences: Rape	219	336	380	44	13.1%	161	73.5%	
	Theft: All Other Theft	5438	4943	4731	-212	-4.3%	-707	-13.0%	
	Theft: Bicycle Theft	1482	1236	1417	181	14.6%	-65	-4.4%	
	Theft: Shoplifting	3980	3974	4087	113	2.8%	107	2.7%	
	Theft: Theft From Person	516	508	494	-14	-2.8%	-22	-4.3%	
	Vehicle Offences	2570	2213	2359	146	6.6%	-211	-8.2%	
	Violence: Violence With Injury	3732	3919	4657	738	18.8%	925	24.8%	
	Violence: Violence Without Injury	2412	3461	4386	925	26.7%	1974	81.8%	
Total	30789	30513	33595	3082	10.1%	2806	9.1%		
Crimes Against Society	Drugs: Possession Of Drugs	1567	1777	1567	-210	-11.8%	0	0.0%	
	Drugs: Trafficking Of Drugs	247	313	244	-69	-22.0%	-3	-1.2%	
	Misc Crimes Against Society	422	568	579	11	1.9%	157	37.2%	
	Possession Of Weapons	183	232	178	-54	-23.3%	-5	-2.7%	
	Public Order Offences	1255	1237	1289	52	4.2%	34	2.7%	
	Total	3674	4127	3857	-270	-6.5%	183	5.0%	
Total	34463	34640	37452	2812	8.1%	2989	8.7%		

Slide Summary

This slide shows **volume change** across the last 3 years.

Victim Based Crime

- is up on previous years

Anti-Social Behaviour

- is down on the previous years

Public Safety & Welfare

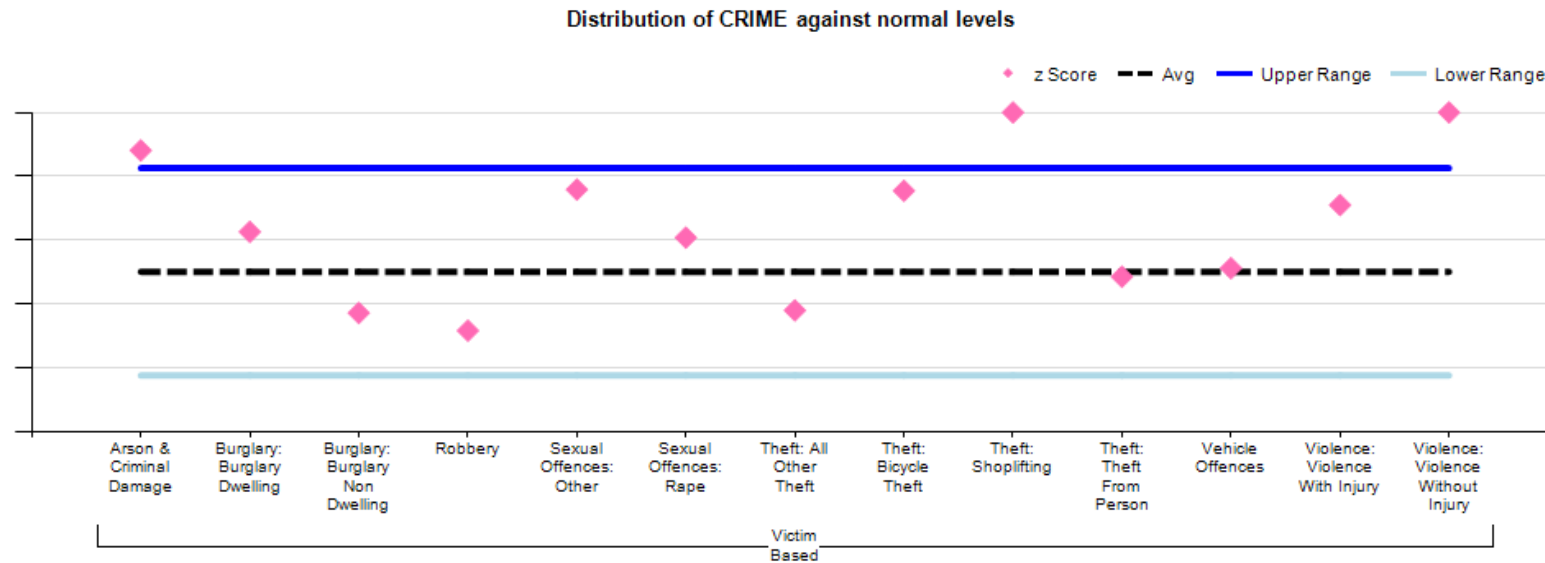
- is up on previous years

NON CRIME STATISTICS		2013/14	2014/15	2015/16	Diff 15/16 v 14/15		Diff 15/16 v 13/14		Trend
ASB	Total	30842	30919	29683	-1236	-4.0%	-1159	-3.8%	
PSW	Total	73769	75473	78207	2734	3.6%	4438	6.0%	

NOT PROTECTIVELY M...

FORCEWIDE EXCEPTION BANDING: VICTIM BASED CRIME

◆ Represents Crime levels recorded in the last month , Data is normalised to allow crime groups with different volumes (e.g. robbery and criminal damage) to be presented on same graph. Crime levels can be described as normal if they fall between the blue lines with movement in this range likely to be random fluctuations.



Although the previous slide details some volume changes in crime levels over the current financial year to date many of the crime levels remain within tolerance. Those that are not are summarised below. The statistical data and the complex underlying issues are considered in more detail at the monthly force Operations Board and in the Performance Conferences – both chaired by ACC Kennedy.

Violence without injury and Criminal Damage

- Have been in exception most of the financial year with Research conducted for ACC Kennedy in November 2015 highlighted the impact of changes in policy/process, the 2014 HMIC Crime Data Integrity inspection, as well as a greater number of 'domestic' crimes. All 43 forces have seen a rise in Violence without Injury over the last 12 months.
- It is forecast that numeric increases in Violence Without Injury will continue in the next financial year with the bulk of such increases linked to comparisons between Q1 2016/17 and 2015/16.

Shoplifting

- A rise in shop lifting is linked to a rise in Scarborough during Q4. Offences predominantly at supermarkets/convenience stores/national retail stores with 'food stuffs' and 'personal accessories' such as cosmetics and clothing being frequently stolen.

NYP'S TACTICAL RESPONSE

	Acquisitive Crime (inc Burglary Dwelling & Non Dwelling, Theft)	Criminal Damage	Violence Against The Person
Cra Ham Rich Hgt	<ul style="list-style-type: none"> •Op RAT X Border working in Hgte re Burg Dwelling. Outcome: Multiple arrests, charges & court process ongoing. W/ Yorks nominals dealt with for conspiracy. Significant reduction in offences & increased detections •Op SHREWD running in Hamb Rich to coordinate local response •Op SIFT burglaries in Hgte linked to theft of quadbikes, vans, tools. •Op HAWK additional evening in Craven to combat 2in1 burglaries. •Use of ANPR & Roads Crime Team and Targeted local patrols , significant focus on Middlesbrough and Darlington borders •Crime prevention & education with Community Safety Partners •Op CHECKPOINT – regional deployment x border criminals •Op FEROX – rural crime in Hamb/Rich including Landrover crime 	<ul style="list-style-type: none"> •Sporadic offending •Local tactics in place •Increase in Harrogate due to 3 youths daubing graffiti. Arrests and disruption curbed further crimes. 	<p>NB: Crime increases strongly linked to improved recording practices</p> <ul style="list-style-type: none"> •Licensing work in Hgate •Domestic abuse outreach to women's groups. •Domestic abuse help marketing campaign ongoing. •Op PARAKEET targets street drinking in Hgate
Scar Rye	<ul style="list-style-type: none"> •Op SHUDDER . Targets x border criminality for burglary & theft in rural areas. Support from specialist units. Tactics include proactive stop checks . Outcome: Arrests made including one person charged with 13 offences & remanded •Op Hawk – regular deployments. •Op Target - planned for 23rd March <div style="border: 1px solid black; padding: 5px; margin-top: 10px;"> <p>In February 2016 NYP launched a <u>force-wide</u> Rural Crime Task force to work alongside neighbourhood teams, and provide a specific focus on the investigation of rural crimes, and engagement with rural communities</p> </div>	<ul style="list-style-type: none"> •Op Veer – damage & ASB Victoria Court •Op AMBIENCE in Castle & North Bay. Multi- Agency response. Outcome: Alcohol & tobacco seizures. Sign-posting adult rough sleepers & street drinkers to appropriate services 	<ul style="list-style-type: none"> •High Vis policing in Night Time Economy •Bid for an outreach worker to deal with low/standard risk Domestic Abuse. •Brief interventions in Custody to divert people away from heavy alcohol use •New Psychoactive Substances (NPS) outreach worker working with most prolific offenders. •NPS education in schools •Op TAUT proactive op targeting drug related violence by Organised Crime Groups (OCGs) from outside North Yorks. •Op SIKA Filey, Whitby & Ryedale on Sat nights
York Selb	<ul style="list-style-type: none"> •Op JELLYFISH / YETO regional op focusing on burglaries at farms and theft of cables. Targeting of known offenders. •Proactive High Vis & Plain clothes patrols at key times •Op JOYPAD targeting crime prevention advice at insecure properties incl Joint patrols with students and Uni Security Team •Dot Peen property marking •Education work with bus companies, shops & local projects •Op Tank – operation targeting rise in TUMV's (Theft from attended motor vehicles) across the city. 	<ul style="list-style-type: none"> •Targeted patrols 	<ul style="list-style-type: none"> •Op ERASE & Op SAFARI continue (alcohol related violence) •Working with British Transport Police & train companies •Door staff briefings •Passive drugs dog exercises •Targeting of problematic locations with licensing team •Dispersal powers

NYP'S TACTICAL RESPONSE

Operation Hawk

- Operation Hawk is an NYP initiative to tackle travelling criminality and rural crime with the emphasis on the patrolling of our borders and targeting of vehicles and persons involved in criminal activities.
- Supporting local officers, all Roads Policing, Firearms and Neighbourhood Support Team (NST) officers deploy to Operation Hawk when not committed with their primary role. A significant contribution though, is provided by the Road Crime Team (RCT) and Northern Roads Crime Team (NRCT which incorporates some firearms capability).
- Since 1st March, the RCT have arrested 18 offenders, recovered 17 vehicles and seized property (Inc. Drugs, cash and stolen vehicles) to the value of £68,500. The NRCT have arrested 19 offenders, recovered 24 vehicles and seized property to the value of £61,000. Of note:
 - High risk suicidal missing person from the Durham area monitored through NYP by means of Automatic Number Plate Recognition (ANPR) cameras. Vehicle stopped by RCT and RPG officers on the West Yorkshire border and driver taken into custody and place of safety.
 - Three males were stopped in a vehicle near to the Force's southern border. All three were arrested on suspicion of being involved in a commercial burglary that had occurred nearby as well as the driver being arrested for drug driving.
 - Six males arrested for conspiracy to commit burglary following an incident within the Cleveland area which resulted in two vehicles travelling along the A1 in the Harrogate area.
 - Male circulated as wanted for a domestic assault arrested on the A162 near to Tadcaster following an ANPR activation.
 - Following a pursuit of a vehicle on the A19 at Northallerton, two males from the Cleveland area arrested for being in possession of a large quantity of class A drugs. Driver also dealt with for Dangerous driving and Disqualified driving.
 - NRCT attended the Harrogate area to support local officers after a report of a Stolen Motor Vehicle (SMV). The vehicle found abandoned and 3 males arrested.
- While not committed with their primary roles Roads Policing Group (RPG)/Firearms Support Unit (FSU)/Dogs deploy onto Op Hawk patrols as well as supporting local policing, successes include:
 - Following an ANPR activation regarding a SMV from Cleveland, area searches were carried out in the Whitby area 4 nominals arrested for vehicle theft and conspiracy to burgle. Vehicle was recovered nearby.
 - After a call from a female stating she has been kidnapped a vehicle is circulated and Ops units coordinated. The vehicle is located on the A1 and a pre-emptive stopped carried out resulting in the female being safeguarded and a male arrested for kidnap.
 - 4 x Males arrested in 2 separate reports after trying to scam member of public with a "broken down story". While on the A1 Bedale the males attempt to get a lone female to take them to a cash point.
 - Cloned vehicle hits ANPR camera A64, FSU co-ordinate and locate vehicle resulting in confirmed SMV and driver arrested and valuable intel re a further convoy vehicle linked to a OCG.
- There is also support of local operations.
 - After a spike in Burglaries in the Craven district Op Veneer was set up supporting Op Hawk targeting travelling criminals from West Yorkshire. Along with stop search checks assets were deployed resulting in arrests being made and the identification of a 'chop shop' (a location where stolen motor vehicles are taken apart for the purpose of selling on their parts) in West Yorks.
 - Supporting Op Target working with our partners in identifying criminal and driving offences promoting Safer Roads.

Operation Checkpoint

- There is a further multi force operation taking place on the 17th May 2016, whereby Local officers along with Farm watch and NYP officers from the NRCT, Rural Task Force, RPG, FSU, Dog section and the NST in carrying out X – border patrols.

VICTIM BASED CRIME BY DISTRICT v PREVIOUS YEARS

NO OF CRIMES	2015/16	
HAMBLETON	2655	
CHANGE 15/16 v 14/15	251	10.4%
CHANGE 15/16 v 13/14	240	9.9%

NO OF CRIMES	2015/16	
RICHMONDSHIRE	1316	
CHANGE 15/16 v 14/15	-58	-4.2%
CHANGE 15/16 v 13/14	-165	-11.1%

NO OF CRIMES	2015/16	
RYEDALE	1474	
CHANGE 15/16 v 14/15	175	13.5%
CHANGE 15/16 v 13/14	138	10.3%

NO OF CRIMES	2015/16	
HARROGATE	5460	
CHANGE 15/16 v 14/15	220	4.2%
CHANGE 15/16 v 13/14	250	4.8%

NO OF CRIMES	2015/16	
SCARBOROUGH	6790	
CHANGE 15/16 v 14/15	580	9.3%
CHANGE 15/16 v 13/14	1189	21.2%

NO OF CRIMES	2015/16	
CRAVEN	1862	
CHANGE 15/16 v 14/15	311	20.1%
CHANGE 15/16 v 13/14	146	8.5%

NO OF CRIMES	2015/16	
YORK	10823	
CHANGE 15/16 v 14/15	1246	13.0%
CHANGE 15/16 v 13/14	524	5.1%

- In addition to Criminal Damage and Violence which are seen across the force area , the main localised exceptions are:
 - Burglary Dwelling in Craven. Mostly linked to Cross Hills in Jan & Feb. March levels high but more normal.
 - Vehicle offences (linked to York) remains in exception despite some positive recent results
 - Shoplifting has been higher than usual across the last two months in Scarborough Central & South areas. Predominantly foodstuff (inc Alcohol) and personal accessories.
 - York has seen small rises in cycle crime. Multi-agency Op Spoke is in place.

NO OF CRIMES	2015/16	
SELBY	3160	
CHANGE 15/16 v 14/15	330	11.7%
CHANGE 15/16 v 13/14	447	16.5%

The above is a presentation of year on year statistics. For latest local data displayed on a map for your area go to www.police.uk and enter your postcode

NOTABLE INVESTIGATIONS

Update from Major Crime Unit (MCU)

- Reported stranger rape in Harrogate, Significant time, effort and resources were put in by the Major Crime Unit with assistance from the Serious Crime Team. Complex circumstances.

Op Neutron

- Robbery / aggravated burglary in Knaresborough

Op Overcast

- Murder in York.

Op Hoe

- Peanut allergy case – Awaiting trial.

Op Essence

- Claudia LAWRENCE

Op Shortbread

- Murder in Thirsk in November

Op Tarn

- Serious assault in Sherburn in Elmet in December

Op Wembley

- Murder investigation in York following the assault of a male outside Fulford Arms Public House in February

Op Wain – Cold Case Review

- Murder investigation from 2005 - This case is being managed as part of the overall cold case review function of the MCU

ASB BY DISTRICT v PREVIOUS YEARS

NO OF ASB	2015/16	
HAMBLETON	2359	
CHANGE 15/16 v 14/15	-149	-5.9%
CHANGE 15/16 v 13/14	-138	-5.5%

NO OF ASB	2015/16	
RICHMONDSHIRE	1319	
CHANGE 15/16 v 14/15	-86	-6.1%
CHANGE 15/16 v 13/14	-36	-2.7%

NO OF ASB	2015/16	
RYEDALE	1130	
CHANGE 15/16 v 14/15	-42	-3.6%
CHANGE 15/16 v 13/14	-142	-11.2%

NO OF ASB	2015/16	
SCARBOROUGH	6592	
CHANGE 15/16 v 14/15	-309	-4.5%
CHANGE 15/16 v 13/14	-236	-3.5%

NO OF ASB	2015/16	
HARROGATE	4855	
CHANGE 15/16 v 14/15	-370	-7.1%
CHANGE 15/16 v 13/14	-162	-3.2%

NO OF ASB	2015/16	
CRAVEN	1272	
CHANGE 15/16 v 14/15	-4	-0.3%
CHANGE 15/16 v 13/14	-119	-8.6%

NO OF ASB	2015/16	
YORK	9160	
CHANGE 15/16 v 14/15	-283	-3.0%
CHANGE 15/16 v 13/14	-380	-4.0%

- ASB is down on the previous year

- There is no link between the fall in ASB and the rise in Criminal Damage in respect of recording standards. A review by the Force Crime & Incident Registrar found no significant issues.

NO OF ASB	2015/16	
SELBY	2869	
CHANGE 15/16 v 14/15	2	0.1%
CHANGE 15/16 v 13/14	29	1.0%

CASUALTIES KILLED OR SERIOUSLY INJURED FROM ROAD TRAFFIC COLLISIONS

		YTD	+/- Change	
Key Performance Indicator		2015	on 2014	on 2013
	Killed or Seriously Injured casualties from RTCs:	54	0 (0%)	
	Motorcyclist KSI casualties from RTCs:	6	3 (100%)	
	Child (= <16) KSI casualties from RTCs:	4	0 (0%)	
	Cyclist KSI casualties from RTCs:	6	-7 (-54%)	

- Please note this is provisional data for the period 1st January to 29th February 16 .
- Long term the trend in KSIs is down. **No emerging issues of note.**
- The provisional stats show no change on the previous year:
 - All KSI = 4 fatal and 50 serious against 2 fatal and 52 serious in the same period in 2015.
 - Motorcycle = 1 fatal and 5 serious against 3 serious in the same period in 2015.
 - Pedal cyclist = 1 fatal and 5 serious against 1 fatal and 12 serious in the same period in 2015.
- 2015 compared to 2014 :
 - All KSI = 32 fatal and 463 serious in 2015 against 45 fatal and 461 serious in 2014.
 - Motorcycle = 13 fatal and 89 serious in 2015 against 12 fatal and 88 serious in 2014.
 - Pedal cyclist = 4 fatal and 77 serious in 2015 against 3 fatal and 88 serious in 2014.

NOT PROTECTIVELY MARKED

HR OVERVIEW

Police Officers

	Apr 15	May 15	Jun 15	Jul 15	Aug 15	Sep 15	Oct 15	Nov 15	Dec 15	Jan 16	Feb 16	Mar 16	Apr 16
Officer Budget FTE Target	1393.0	1393.0	1393.0	1393.0	1393.0	1393.0	1393.0	1393.0	1393.0	1393.0	1393.0	1393.0	1419.0
Actual/ Projected Num inc recr'ment	1382.37	1387.02	1380.01	1374.27	1365.93	1360.21	1349.88	1343.60	1342.01	1340.89	1336.79	1325.51	1330.00

- The actual number of Officers has increased by 4.9 FTE from the previous month.
- 9 Student Officers commenced with NYP in March 2016.
- It is planned that a further 100 officers will be recruited in the next financial year to meet the figure of 1400. This takes into account officers leaving the service to retire or for other reasons as well as current gaps.

PCSO

	Apr 15	May 15	Jun 15	Jul 15	Aug 15	Sep 15	Oct 15	Nov 15	Dec 15	Jan 16	Feb 16	Mar 16	Apr 16
PCSO Budget FTE	183.0	183.0	183.0	183.0	183.0	183.0	183.0	183.0	183.0	183.0	183.0	183.0	183.0
Actual/ Projected Num inc recr'ment	197.98	197.52	197.52	195.52	194.46	194.46	192.46	192.31	191.98	190.83	189.00	187.62	184.62

- The actual number of PCSO's decreased by 3 FTE from the previous month towards the planned budgeted numbers.
- Later in 2016 a PCSO recruitment campaign will be launched with the aim of reaching the target of 200 PCSO's, as set by the PCC/Chief Constable.

NOT PROTECTIVELY MARKED

OP READINESS

Organisation	Projected Target	Available Number of Officers FTE 01.04.2016	Variance	Current Sickness	Adoption Leave	Maternity Adjustment	Maternity Leave	Recuperative Duties	Adjusted Duties	Restricted Duties	Operational Readiness of Actual Officer FTE	Operational Readiness of Projected Target FTE
Police Officers	1419.00	1190.49	-228.52	47.74	1.00	11.90	13.65	48.60	10.61	6.00	88.28%	74.07%

NOT PROTECTIVELY MARKED

HR OVERVIEW

Specials

	Apr 15	May 15	Jun 15	Jul 15	Aug 15	Sep 15	Oct 15	Nov 15	Dec 15	Jan 16	Feb 16	Mar 16	Apr 16
Specials Budget FTE	260.00	260.00	260.00	260.00	286.00	286.00	286.00	286.00	286.00	286.00	286.00	286.00	286.00
Actual Specials FTE	185.00	177.00	172.00	171.00	170.00	189.00	183.00	177.00	199.00	198.00	190.00	187.00	184.00

The actual number of Special Constables has decreased from the previous month by 3.

The recent recruitment campaign for Special Constables closed 1 February 2016. Assessment Centres were held in March 2016 and applications will now be progressed, with the next intake of Special Constables scheduled for May 2016.

Staff

	Apr 15	May 15	Jun 15	Jul 15	Aug 15	Sep 15	Oct 15	Nov 15	Dec 15	Jan 16	Feb 16	Mar 16	Apr 16
Staff Budget	1034.4	1035.2	1034.4	1028.4	1028.4	1027.4	1019.4	1018.4	1018.4	1018.4	1018.4	1017.4	1034.4
Permanent Staff FTE	912.98	913.93	916.52	912.88	915.32	915.93	914.83	911.41	910.98	910.75	915.73	913.86	911.36
Temporary Staff FTE (not including agency)	65.07	69.62	65.62	69.30	63.30	58.02	54.76	52.39	59.60	56.87	60.00	58.61	53.80
Agency Staff FTE	33.50	30.00	28.22	31.74	36.74	35.32	38.24	43.16	45.16	46.16	47.30	52.80	44.38
Total Staff against budget FTE	1011.55	1013.55	1010.36	1013.92	1015.36	1009.27	1007.83	1006.96	1015.74	1013.78	1023.03	1025.27	1009.54

NOT PROTECTIVELY MARKED

HR OVERVIEW

The Staff Budget will be adjusted for 2016/ 2017.

Police staff roles fluctuate in accordance with organisational priorities and requirements. The approach to police staff workforce profiling is to explore opportunities where flexible resources can be utilised specifically to deliver key pieces of work.

The total number of actual Staff has decreased by 15.73 FTE from the previous month.

The number of agency staff has decreased by 8.42 FTE since the previous month:

15.77 x agency staff are in supernumerary posts.

28.61 x agency staff are backfill or interim postings against established posts (includes part time agency staff).

Volunteers

	Apr 15	May 15	Jun 15	Jul 15	Aug 15	Sep 15	Oct 15	Nov 15	Dec 15	Jan 16	Feb 16	Mar 16	Apr 16
Volun- teers	176.00	177.00	178.00	179.00	177.00	179.00	180.00	180.00	230.00	238.00	236.00	235.00	241.00

Deployment of volunteers:-

- The 241 volunteers are broken down into the following roles
- 1 Chief Officer – Citizens in Policing
- 1 - Head of Volunteering
- 1 - Deputy Head of Volunteering
- 5 - Volunteer Advisors’.
- 36 - Front Counter Support
- 150 - Volunteers are Safer Neighbourhood Support
- 38 – Police Cadets
- 9 Police Cadet Leaders

GLOSSARY

Reading the performance data

- The numbers shows performance against the previous year
- The dashboard graphic for operational crime, ASB and KSI data is an assessment of the latest month against a normal month based on the 2014/15 reporting period. The position of the needle describes the month results relative to a linear average. This allows for factors such as seasonal trends or the impact of single one off events to be explained. As the desired direction of travel can be up or down (e.g. increasing crime is negative but an increasing resolution % positive) the graphics alternate the red/green colouring accordingly.

Glossary

- ASB = Anti-Social Behaviour
- Crimes Against Society = These are crimes which do not have a “named victim” i.e.. the offence is against The Crown. These are usually (but not always) are as the direct result of police intervention/proactivity e.g a drugs operation. In North Yorkshire & City of York approx 10% of crimes are “Against Society” therefore it is important to make the clear distinction from Victim Based Crime.
- Fraud Offences = These are not included in the crime statistics as they are not reported by forces to the Home Office. Instead these crimes are passed to Action Fraud and statistics are collated by that agency
- I Grade = priority assigned by control room for an incident requiring ImmEDIATE police response
- KSI = A casualty Killed or Seriously Injured as a result of a Road Traffic Collision on a public road
- MCU = Major Crime Unit
- MO = Modus Operandi
- NPS = New PsychoaSive Substances is the official term for Legal Highs
- NTE = Night Time Economy
- OPL = Over Prescribed Limit typically the term used to describe failing a breath test
- P&CP = Police & Crime Plan document setting out the Police & Crime Commissioner’s priorities
- PCC = Police & Crime Commissioner
- PCSO = Police Community Support Officer
- PSG = Performance Steering Group is an internal meeting chaired by a Chief Officer monitoring statistics & trends
- Resolved Outcome = A crime where an offender has been dealt with through sanction or restorative justice.
- Sanction Detection = A historical method of looking at how crimes were resolved. A sanction detection includes where an offender is Charged, Cautioned, given a Penalty Notices for Disorder or Cannabis Warning or Fixed Penalty Notices, and where an offender has crimes Taken Into Consideration (TIC - see below).
- TIC = Taken Into Consideration is typically where an offender admits to further offences to avoid potentially being pursued for these at a later date.
- TTCG = Tactical Tasking & Co-ordination Group is an internal meeting which directs resources to tackle specific problems

NOT PROTECTIVELY MARKED