

Police and Crime  
Commissioner  
North Yorkshire



# Public Accountability Meeting



Meeting: 27 February 2018

Policing update – Local Policing update on the Police and Crime Plan

**BE SAFE**  
**FEEL SAFE**

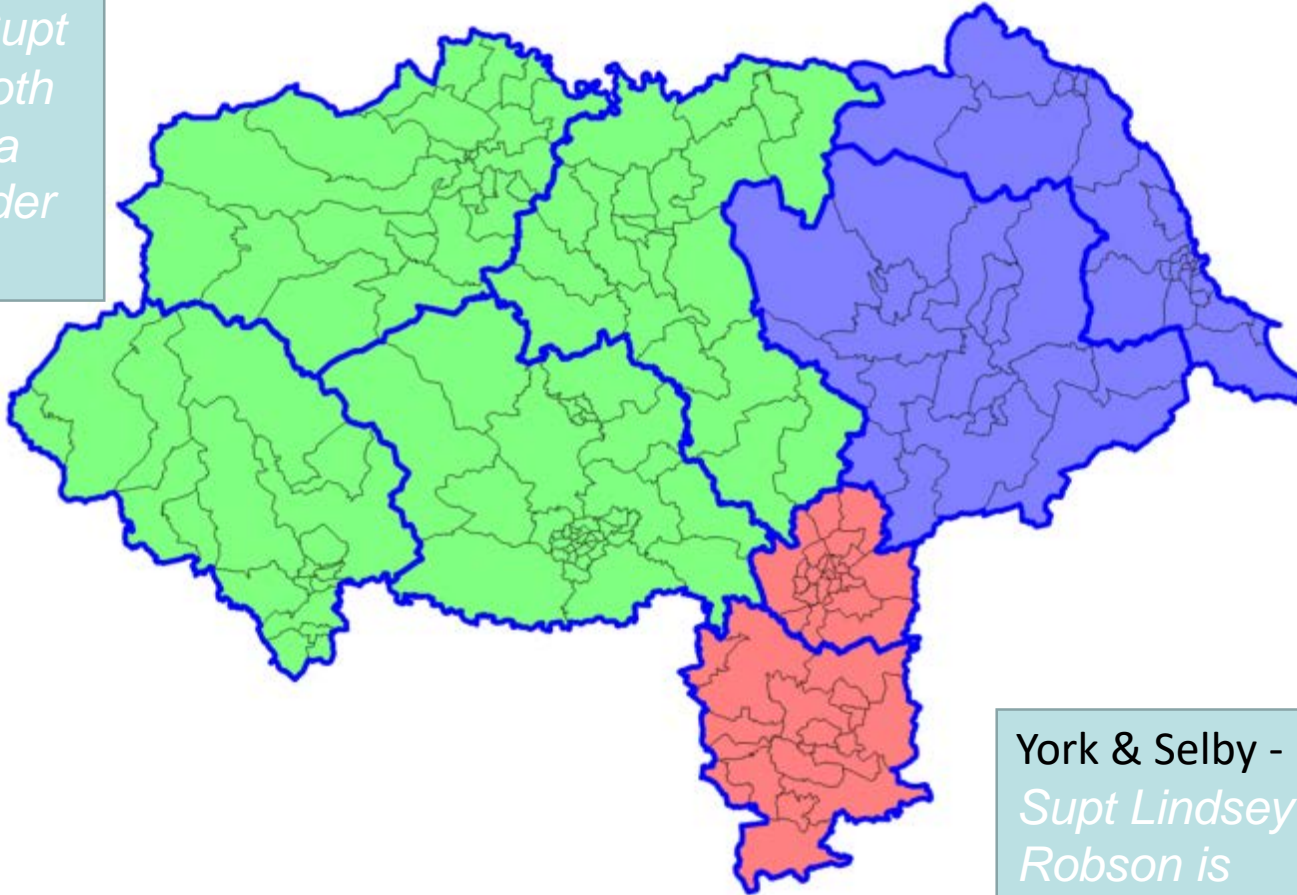


## Local Policing

- Local Policing
- Structure
- Priorities
- Districts
- Broader Force Support

# Local Policing - Our Structure

County - *Supt Paula Booth is the Area Commander*



Scarborough & Ryedale –  
*Supt Alisdair Dey is the Area Commander*

York & Selby -  
*Supt Lindsey Robson is the Area Commander*

# Control Strategy (NYP's operational priorities)

## Reducing victim harm

- Cyber-enabled sexual crime
- PREVENT (Terrorism/domestic extremism)
- Fraud (personal)
- Domestic abuse
- Modern slavery/human trafficking
- Child abuse and neglect; CSE
- Missing people
- Stalking and harassment

## Reducing community harm

- Killed/serious injury road traffic collisions
- Border vulnerabilities (road, rail, air, water)
- Serious organised crime with high community impact
  - Organised acquisitive crime
  - Drugs production and supply
  - Organised immigration crime

# Local Plans

North Yorkshire is the largest county in England, with diverse needs across its different communities. The delivery of policing in each area will therefore be different. In addition, we have listened to your local needs, concerns and priorities, to which local teams will need to respond.

**Policing impacts:** Craven is a large rural district, sparsely populated with many remote villages and farms, often nestled within the Yorkshire Dales National Park. There are also a small number of more deprived communities. It borders higher crime areas to the south and west and has influxes of visitors to the National Park during summer months. It has a large network of rural roads and several major cross country arterial routes.

**Top public concerns:** Police visibility, burglary, cross border crime, road safety, and crime prevention.

**Our priorities:** Mobile working to help officers spend more time in communities and an improved understanding of, and response to, rural issues and isolation. Primary prevention to help communities and individuals protect themselves, and opportunities through collaboration to improve safety in communities and on our roads.

**Policing impacts:** Richmondshire has large, isolated rural areas in the Yorkshire Dales National Park as well as a significant urban area in Richmond and the largest army base in the country at Catterick Garrison. It borders a higher crime area to the north and has influxes of visitors to the National Park during summer months. It has a large network of small rural roads as well as two major roads, the A1(M) and A66.

**Top public concerns:** Police visibility, drugs, anti-social behaviour and crime prevention.

**Our priorities:** An improved response to the most vulnerable in society, and working better with others to join up services, especially in rural areas. Mobile working to help officers spend more time in communities, and primary prevention to help communities and individuals protect themselves.

**Policing impacts:** Hambleton has a mix of rural areas and market towns with seasonal visitors, including a larger urban area in Northallerton. It borders a higher crime area to the north and has two major roads running through, the A1 and A19.

**Top public concerns:** Burglary, police visibility, road safety and mental health issues.

**Our priorities:** Enabling frontline officers and staff to respond effectively to both traditional and new policing demand, including working with the vulnerable to address their needs. Primary prevention to help communities and individuals protect themselves and stay safe.

**Policing impacts:** Scarborough, North Yorkshire's coastal region, also covers rural and isolated villages and farms in the North York Moors National Park, with most of its population centred in its three major towns, Scarborough, Whitby and Filey. Physically isolated on the east coast, it has some of the most socio-economically deprived communities in North Yorkshire, and also attracts a large number of tourists to its coastline, towns and National Park.

**Top public concerns:** Drugs, anti-social behaviour, burglary, mental health and police visibility.

**Our priorities:** Working with the most vulnerable in society to reduce harm, especially from drugs, including those with mental ill-health. Mobile working to help officers spend more time in communities, and better use of technology to counter serious organised crime.

**Policing impacts:** Ryedale is the largest district in North Yorkshire, yet has the lowest population. It is mainly rural with several market towns, notably Malton and Pickering, and includes a large part of the North York Moors National Park. It has a large influx of visitors in the summer and includes the A64, A170 and Sutton Bank as well as a large network of small roads.

**Top public concerns:** Burglary, road safety, anti-social behaviour, and drugs.

**Our priorities:** Asking the police to consider how its whole workforce is best deployed to respond to traditional policing demand which concerns the public most, such as burglary and anti-social behaviour. Mobile working to help officers spend more time in communities, and effective collaboration to improve community and road safety.

**Policing impacts:** Harrogate has a mix of isolated rural areas and larger towns, including North Yorkshire's most populous town, Harrogate. It borders a higher crime area to the south and the district has the A1(M) running through.

**Top public concerns:** Burglary, anti-social behaviour, online/cyber crime and road safety.

**Our priorities:** Mobile working to help officers spend more time in communities, and provisions to better address online fraud and crime. Innovative collaboration opportunities to improve how we address community and road safety, including preventing burglary and anti-social behaviour.

**Policing impacts:** Selby is a mix of rural areas, market towns and the larger urban area of Selby Town itself, which also includes pockets of socio-economic deprivation. It borders a higher crime area to the west and south and has two major roads, the A19 and M62, running through.

**Top public concerns:** Burglary, anti-social behaviour, police visibility, online/cyber crime and drugs.

**Our priorities:** Enabling officers and staff to respond effectively to both traditional and new policing demand. Mobile working to help officers spend more time in communities, and working with the most vulnerable to reduce harm.

**Policing impacts:** With a population of over 200,000, York is the largest urban area in North Yorkshire, attracting numerous tourists to its historic attractions and has a vibrant night-time economy. It is a major hub, with two universities, industrial areas, and with many large roads converging around it.

**Top public concerns:** Burglary, anti-social behaviour, online/cyber crime and violent crime, often related to the day-time drinking and the night-time economy.

**Our priorities:** Enabling officers and staff to respond effectively to both traditional and new policing demand, with provisions to better address online fraud and crime. Asking the police to consider how its whole workforce is best deployed to respond to public concerns and protect the most vulnerable.



# Neighbourhood Policing Review

- Staffing in the Table is based on the (VLI) Vulnerable Localities Index – this is a modelling tool which takes account of the policing demand on each District as well as the urban and rural nature of an area. Created by the Jill Dando Institute of Crime Sciences, University College London.
- It is calculated using six variables –
  - Counts of burglary dwelling
  - Counts of criminal damage to a dwelling
  - Income deprivation score
  - Employment deprivation score
  - Count of 15-24 year olds
  - Educational attainment

District	Current Resources			
	Insp	Sgt	PC	PCSO
Craven	1	2	6	12
Hambleton & Richmondshire	2	6	15	30
Harrogate	2	4	14	35
York	2	5	18	48
Selby	1	3	10	20
Scarborough & Ryedale	3	7	22	48
<b>Total</b>	<b>11</b>	<b>27</b>	<b>85</b>	<b>200</b>

# Community Safety Partnership Hubs

AREA	STATUS	ESTABLISHMENT
<b>Scarborough</b>	Established	Neighbourhood Policing Team co-located at Scarborough Council offices
<b>Selby</b>	Established	3 officers co-located at Selby Council offices (2 x PC, 1 x PCSO)
<b>Hambleton</b>	Established	1 NYP officer (PC) at Hambleton District Council Offices
<b>Richmondshire</b>	Established	1 NYP officer (PC) at Richmondshire District Council Offices
<b>Craven</b>	Established	1 NYP Officer (PC) at Craven Council offices
<b>Harrogate</b>	Established	3 officers co-located at Harrogate Council offices (2 x PC and 1 x PCSO)
<b>York</b>	Established	1 Sergeant and 6 Officers co-located at the City of York West Offices
<b>Ryedale</b>	Established / In Development	1 NYP officer (PC) co-located at Ryedale District Council Offices one day a week. Multi Agency Problem Solving Meetings (MAPS) for focus on specific individuals or community issues.

# Scarborough & Ryedale

## Police and Crime Plan Priorities:

- Working with the most vulnerable in society to reduce harm, especially from drugs, including those with mental ill health.
- Mobile working to help officers spend more time in communities, and better use of technology to counter serious organised crime.
- Effective collaboration to improve community and road safety. How NYP deploy to respond to traditional policing demand which concerns the public most, such as burglary and anti-social behaviour



Scarborough and Ryedale together form one command with a variety of different concerns from the public. Scarborough, North Yorkshire's coastal region, also covers rural and isolated villages and farms in the North York Moors National Park. Physically isolated on the east coast, it has some of the most socio-economically deprived communities in North Yorks. We are building stronger partnership working across the area utilising our Neighbourhood Policing Teams and Community Impact Team to good effect.



# Scarborough & Ryedale - Resources

1 - Superintendent  
1 - Chief Inspector  
1 - Detective Chief Inspector

	SUPT	CI	INSP	PS	PC	OFFICER TOTALS
Scarborough & Ryedale Response			5	15	95	115

	SUPT	CI	INSP	PS	PC	OFFICER TOTALS
Investigation Hub			1	4	20.82	25.82

	SUPT	CI	INSP	PS	PC	OFFICER TOTALS
Serious Crime Team			2	4	29.5	35.5

# Community Impact Team - Multi Agency Operations

- Community Impact Team
- Operation Ambience – Vulnerability, ASB
- Operation Contribute – Exploitation of children and adults
- Operation Culture - ASB
- Challenges / Emerging Issues - County Lines



# Successful targeting of these County Lines groups:

NYP led operations identified OCGs in:

West Yorkshire

5 males arrested: significant quantity of drugs recovered  
3 males arrested: a knife, a large amount of cash and a significant quantity of drugs recovered.

**Heroin dealer who helped rip a seaside town apart with his drugs is jailed**

West Midlands

4 males arrested: machete, baseball bat, cash and drugs recovered.

Teejay Campbell, from Deighton, was caught 'cuckooing' from an addict's house - and claimed he was forced to sell drugs in the resorts by Huddersfield gang

Merseyside

1 male arrested: large amount of drugs, cash and a knife recovered.  
3 males arrested. Drugs, bow and arrow and a firearm recovered.

**Merseyside drug trio jailed for dealing in Scarborough**

South Yorkshire

3 males arrested: a rifle, ammunition and drugs recovered.

**Final member of Manchester drugs gang that plotted to supply cocaine in Scarborough is jailed**



Paul Daniel Watson



Alan Bates, 21, Steven McCarty, 18 and Wade Bates, 20

# York and Selby

## Police and Crime Plan Priorities:

- Enabling officers and staff to respond effectively to both traditional and new policing demand
- Mobile working to help officers spend more time in communities
- Working with the most vulnerable to reduce harm
- Provisions to better address online fraud and crime
- how its whole workforce is best deployed to respond to public concerns



York and Selby together form one command with a wide variety of different concerns from the public. With a population of over 200,000, York is the largest urban area in North Yorkshire, attracting numerous tourists to its historic attractions and has a vibrant night-time economy. It is a major hub, with two universities, industrial areas, and with many large roads converging around it.

Selby is a mix of rural areas, market towns and the larger urban area of Selby Town itself, which also includes pockets of socio-economic deprivation. It borders a higher crime area to the west and south and has two major roads, the A19 and M62, running through.

# York and Selby - Resources

1 - Superintendent  
 1 - Chief Inspector  
 1 - Detective Chief Inspector

	SUPT	CI	INSP	PS	PC	OFFICER TOTALS
Selby Response				5	40	45

	SUPT	CI	INSP	PS	PC	OFFICER TOTALS
York Response			5	15	95	115

	SUPT	CI	INSP	PS	PC	OFFICER TOTALS
Serious Crime Team			2	4	42.94	48.94

	SUPT	CI	INSP	PS	PC	OFFICER TOTALS
Investigation Hub			1	6	33.27	40.27

# York and Selby

- Community Safety Hubs
  - York
  - Selby
- York Inner - Operation Erase, Operation Safari, Operation Vestige
- York Outer - Operation Casbia
- Selby - Operation Dusk - cross border criminality
- Challenges / Emerging issues - County lines drug supply



# County

## Police and Crime Plan Priorities:

- Enabling frontline officers and staff to respond effectively to both traditional and new policing demand
- An improved response to the most vulnerable in society, and working better with others to join up services, especially in rural areas
- Mobile working to help officers spend more time in communities
- Provisions to better address online fraud and crime
- Innovative collaboration opportunities to improve how we address community and road safety, including preventing burglary and anti-social behaviour
- Improved understanding of, and response to, rural issues and isolation
- Primary prevention to help communities and individuals protect themselves.



Hambleton, Richmondshire, Craven and Harrogate together form one large geographical command with a wide variety of different concerns from the public. A big consideration within the command is around how we provide the best service we can to the more rural areas whilst maintaining sight on the objectives of the NYP Control Strategy and police and crime plan.

# County - Resources

1 - Superintendent  
1 - Chief Inspector  
1 - Detective Chief Inspector

	SUPT	CI	INSP	PS	PC	OFFICER TOTALS
Response			5	25	185	215

	SUPT	CI	INSP	PS	PC	OFFICER TOTALS
Investigation Hub				4	31.88	35.88

	SUPT	CI	INSP	PS	PC	OFFICER TOTALS
Serious Crime Team			3	8	39.25	50.25



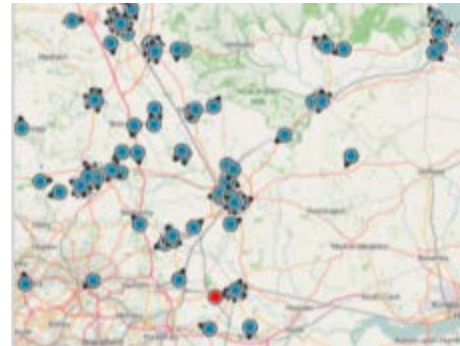
# County

- Community Safety Partnership Teams
- Richmondshire
  - ASB Colburn
- Hambleton
- Harrogate - ASB at the Hydro , Operation Domain
- Craven
  
- Challenges / Emerging Issues - Cross Border Criminality , Organised Crime Groups



# Operational Mobile Working - tuServ

Mobile working to help officers spend more time in their communities

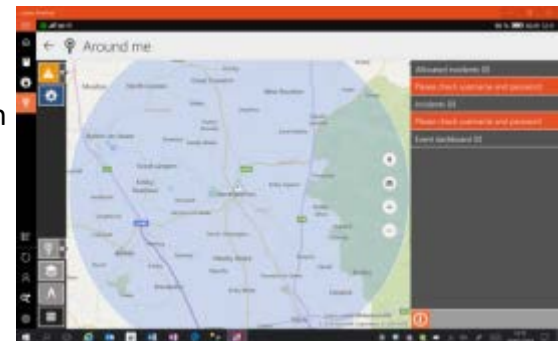


**Mobile working (tuServ) went live on 19<sup>th</sup> December 2017:**

- These devices are Windows 10 tablets and mean officers can access majority of Police systems whilst mobile ie Niche, Origin, Emails
- tuServ training is now well underway and as of the 6<sup>th</sup> February 2018 430 officers have been trained and issued with their devices.
  - Training is continuing at a pace and the roll out is due to be completed by the end of May 2018 by when a total of around 1305 devices will have been issued.

The next step:

- The team are already working on adding additional functionality which will be released as developed and will include further paperwork/forms

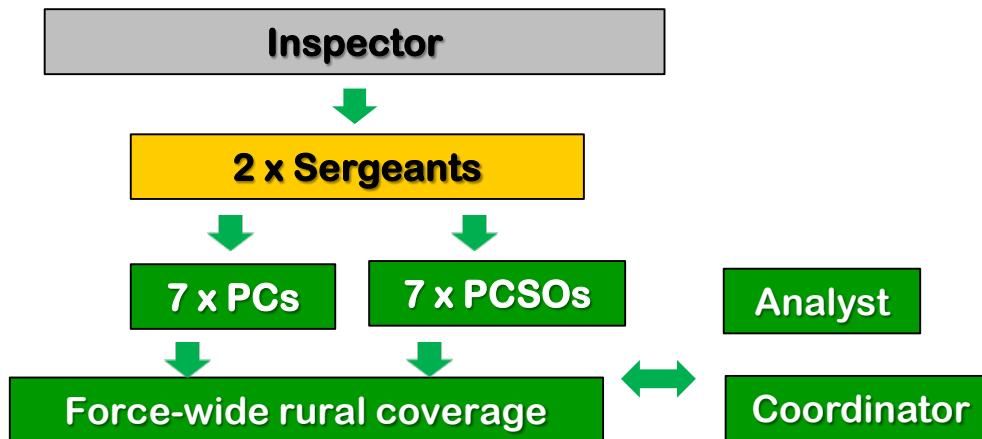


# Rural Task Force

North Yorkshire Police's Rural Taskforce was established in April 2016 and are now at the forefront of best practice when it comes to policing a large, rural population. The feedback from the public is clear – the Rural Taskforce has made a positive difference



**The largest rural team in the UK !**



# Rural Task Force - Collaboration

Positive examples of collaborative working in the community:

## *“Op Harvester” Mobile Rural Watch Schemes*

*Many schemes in existence for a number of years, each with different ways of working, and different levels of support*

- *Aims to standardise mobile Watch schemes forcewide*
- *All becoming Police Volunteers*
- *Protocols standardised for Watches, SPOCs and FCR*
- *Mileage*

### *Rural Task Force role with Watch groups :*

- *Point of contact/advice*
- *Help co-ordinate/set up new Watches*
- *Provide support existing Watches*



- Hawes Daleswatch
- Middleham Watch
- Bedale Watch
- Richmond Border Watch
- Thirsk Valewatch
- Stokesley Watch
- Girsby Watch
- Danby Wiske Watch
- Masham Watch
- Pateley Watch



# Automatic Number Plate Recognition

North Yorkshire is the largest, single county police force in England. It has 6,000 miles of roads and borders seven other counties including four with the highest crime rate per 1,000 population.



# Operational Support Unit

The North Yorkshire Operational Support Unit is made up of 4 teams. Each team is made up of 12 Constables and 1 Sergeant, formerly of the Neighbourhood Support Teams and the Roads Crime Team.

- **Burglary** - a number of notable arrests by Road Policing Group / Firearms Support Unit officers following vehicles stolen in burglaries.
- **Cross border crime and OCG disruption** - In recent months there has been a large amount of patrolling in the Selby border areas in response to an increase in SAC
- **Prevention** - Op Attention drink / drug driving
- **Police Visibility** - continue to work in conjunction with other agencies on days of action throughout the county



# Organised Crime Unit

The Organised Crime Unit is a dedicated unit of Detectives who work closely specialist teams and local commands in order pursue Organised Crime Groups (OCGs). They are also the link in with the regional Organised Crime units (ROCs) to the North and South of the County and ultimately to the National Crime Agency (NCA). This allows us to escalate identified Serious Organised Crime Groups for appropriate resourcing.

Organised Crime Units work is intelligence led developed by the Force Intelligence Bureau and analyst teams and has seen some huge success in protecting our communities from harm this last year

## Drug dealer using dark web to sell fentanyl jailed for over 13 years

Police describe the case as first of its kind because of the sophisticated use of technology to sell class A drugs



Left, drug gang member Simon Hall jailed for seven years for conspiracy to supply drugs. Right, Drug gang member Edward Wharton jailed for four and a half years for conspiracy to supply drugs.

# Firearms Support Unit

The multi-skilled FSU is a high performing team plays a vital role in the diverse challenges that face modern policing.

They work along side a number of other specialist units both within the force but also extending into surrounding forces as we are part of the Yorkshire and Humber region for firearms.

This means that North, West and South Yorkshire Police along with Humberside are one large interoperable resource. Our training, equipment and vehicles are all the same, therefore we are able to work alongside our colleagues anywhere in the region seamlessly.





# Roads Policing Group

In North Yorkshire we have 6000 miles of road in North Yorkshire, much of them which are remote, rural, and picturesque. Our job is to police these routes and ensure road users safety. To do this, we implement various operations and work alongside local communities and our partners, such as the 95 Alive Road Safety Partnership. We work closely with 95 Alive, which is a partnership of local authorities, emergency services and other North Yorkshire agencies who work together to educate, inform and train, with the aim of lowering the number of road casualties across the county of North Yorkshire.

95 Alive partners are:

- North Yorkshire Police
- North Yorkshire County Council
- North Yorkshire Fire and Rescue
- City of York
- Harrogate Borough Council
- Scarborough Borough Council
- Highways Agency
- Yorkshire Ambulance Service
- Yorkshire Air Ambulance



# Dog Section

- North Yorkshire Police is part of a three-Force collaboration programme called Evolve
- Through Evolve, Chief Constables and Commissioners decided to combine the dog units across all three Forces to create a single, integrated dog section
- Training and tactics are the same across the whole region
- For immediate incidents, we now operate on the rule of “nearest dog goes”





Any Questions?

**BE SAFE**  
**FEEL SAFE**

