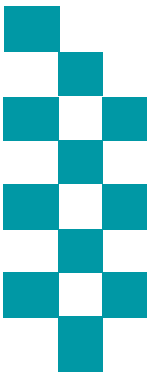


Public accountability meeting Performance update



Meeting: 27th November 2018

Reporting Period: April - Oct 2018



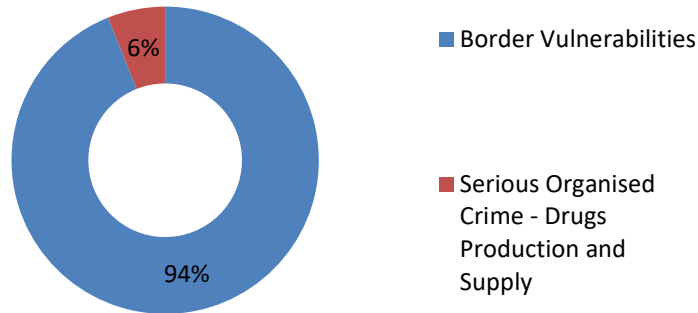
Proactivity: How has proactive policing contributed to control strategies?

Breakdown of *Officer Hours – Hours Spent On Proactive Operations

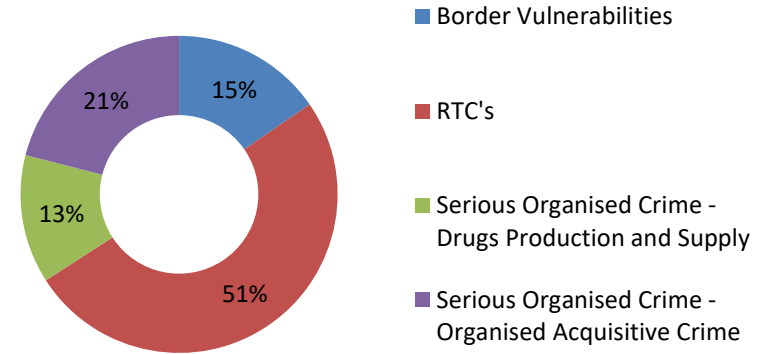
Date Period: 01.09.2018 – 31.10.2018

*Data taken from Proactive Policing Calendar on SharePoint. Relies on officers inputting the data.

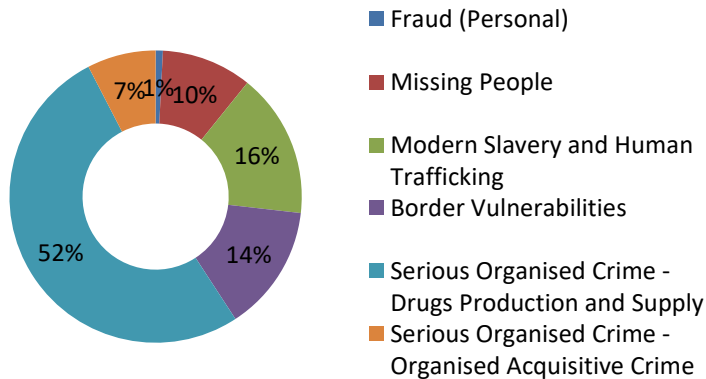
Split of the 1751 hours apportioned to FSU



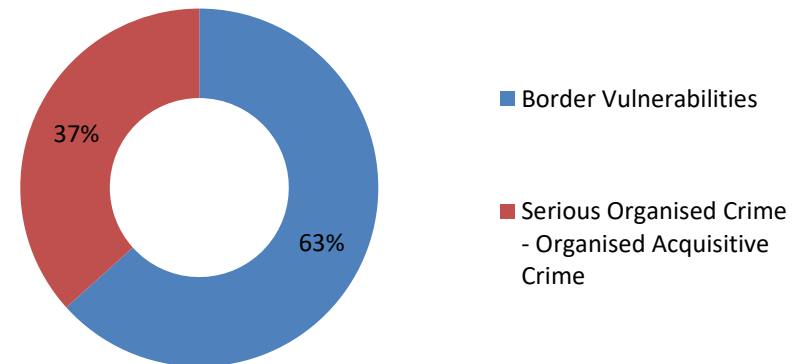
Split of the 2127 hours apportioned to RPG



Split of the 500 hours apportioned to OSU

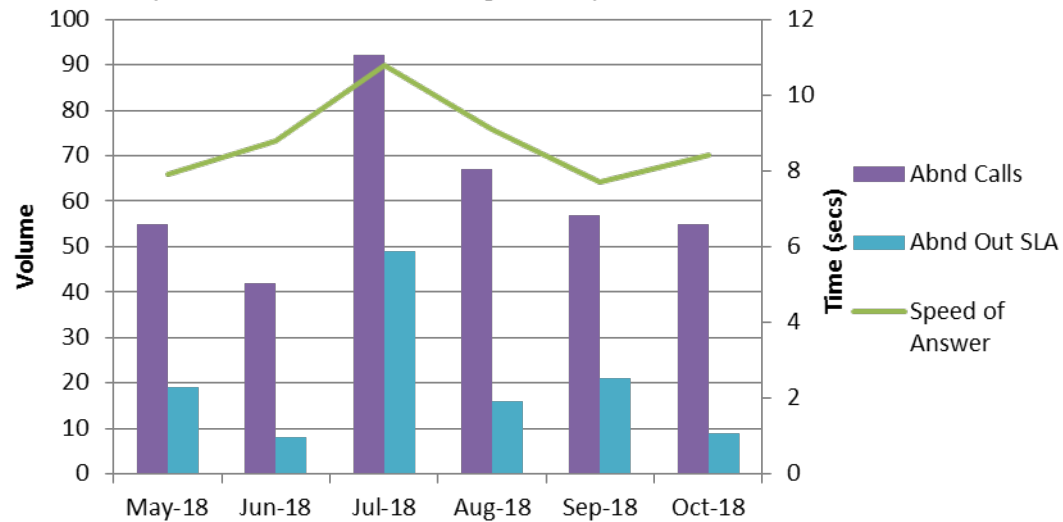
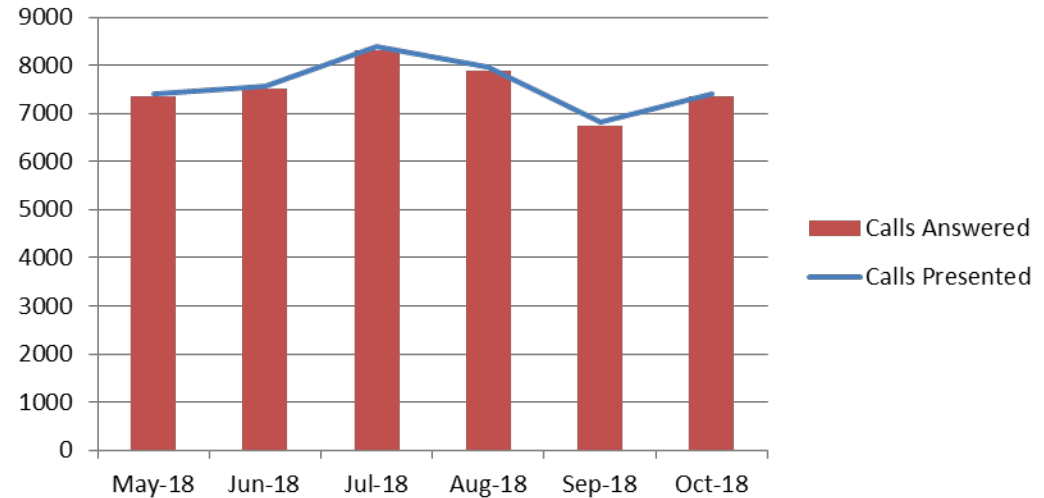


Split of the 409 hours apportioned to the RTF



Initial Contact – 999

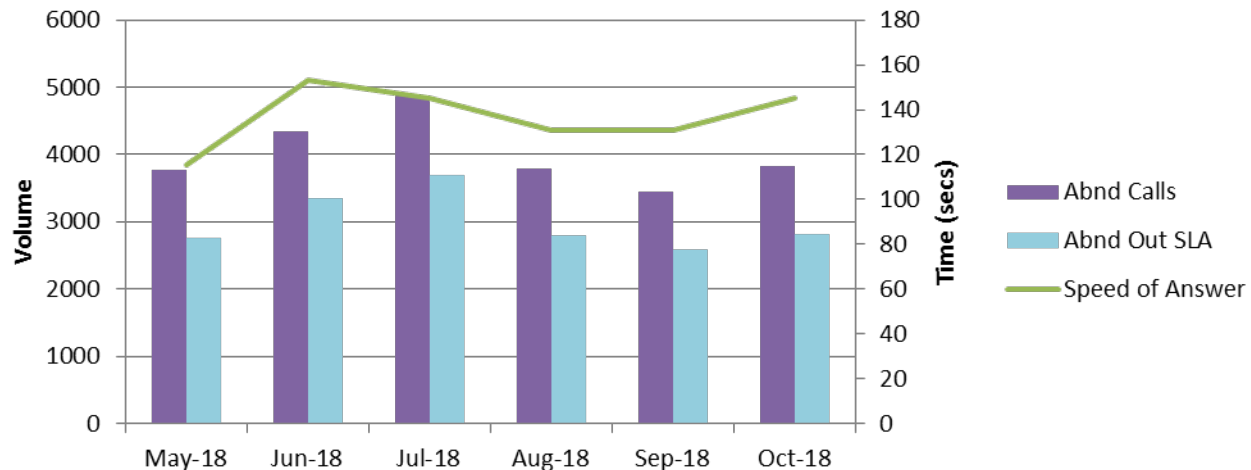
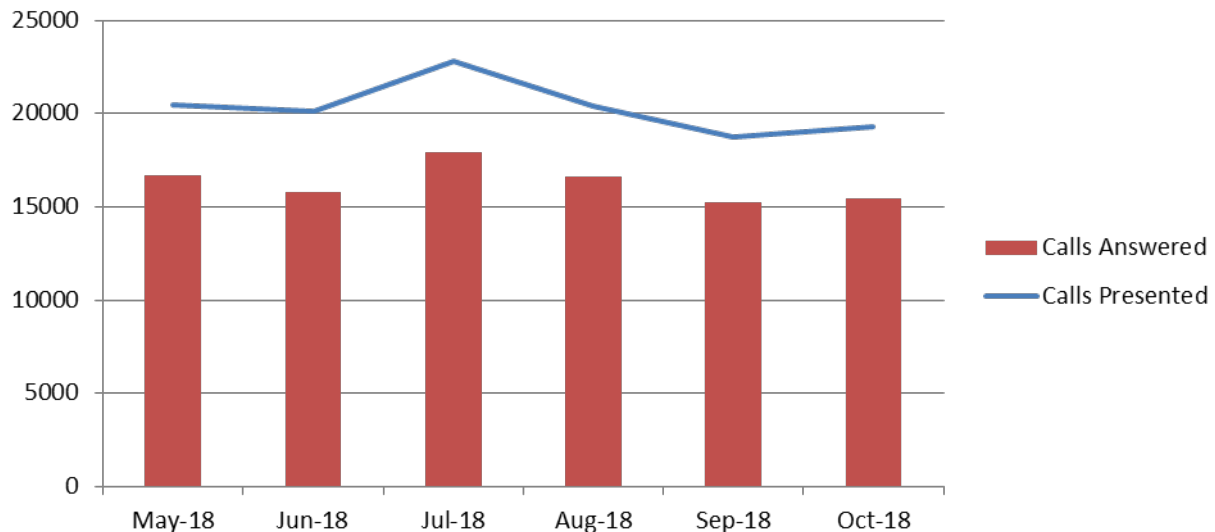
Month	Calls Presented	Calls Answered	Speed of Answer	Abnd Calls
May-18	7409	7354	7.9	55
Jun-18	7563	7521	8.8	42
Jul-18	8400	8308	10.8	92
Aug-18	7961	7894	9.1	67
Sep-18	6811	6754	7.7	57
Oct-18	7413	7358	8.4	55



- Halloween 1600–0000 presented 50 more 999 calls than the same time frame during a normal Wednesday
- Transfers to secondary and alternate lines remain under the national guideline of 2%
- 8.84% increase since September 2018

Initial Contact - 101

Month	Calls Presented	Calls Answered	Speed of Answer	Abnd Calls
Oct-18	19280	15454	145.3	3826
Sep-18	18713	15266	131	3447
Aug-18	20420	16627	130.6	3793
Jul-18	22796	17927	145.2	4869
Jun-18	20153	15807	153.2	4346
May-18	20469	16697	115.5	3772



- 3.17% increase in calls since September 2018
- Call duration on non - emergency calls has been consistently higher than 5 minutes since February 2018. The increased call duration has led to 268 more hours spent on “talk time” in October 2018 compared to October 2017.
- On Halloween there was an increase of 70 non- emergency calls between 16.00 and 00.00 compared to a normal Wednesday in the same time frame.

City Command (Incidents and Crimes – October 2018 – York and Selby)

Count of all Incidents and type

Count of incidents

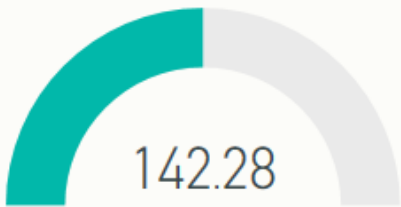
2,874

Average Officers and Time Spent

Average resources per incident



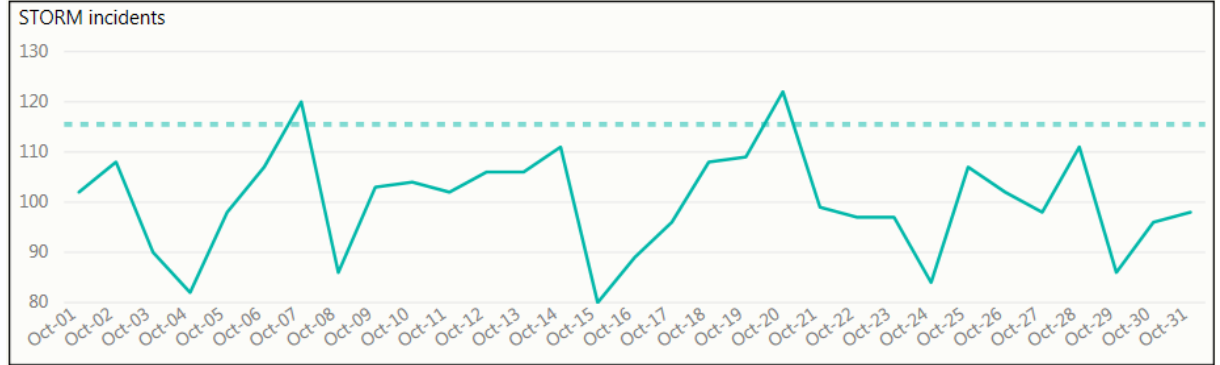
Average minutes per incident



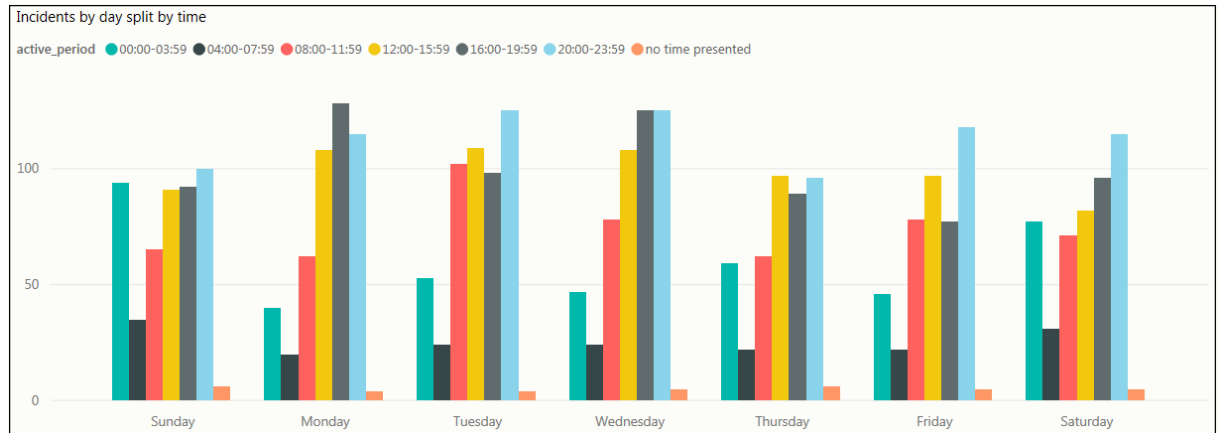
Total Crimes Committed

1404 Crimes

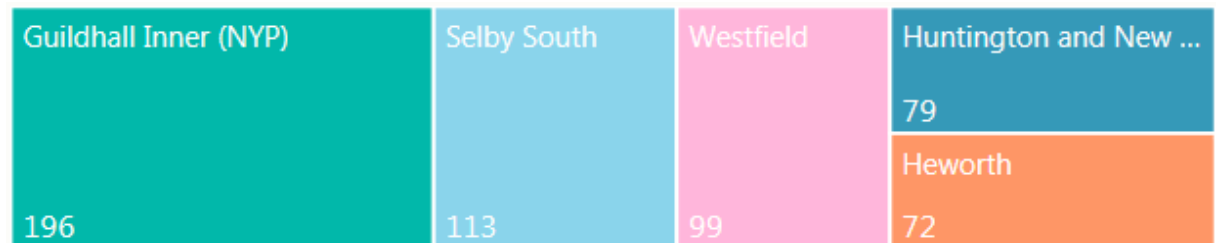
Incident Volumes by Date



Incident Volumes by Day and Time Group

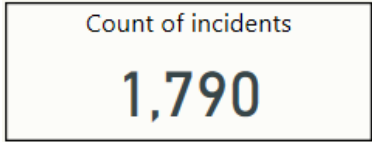


Highest Wards by Crime Volume

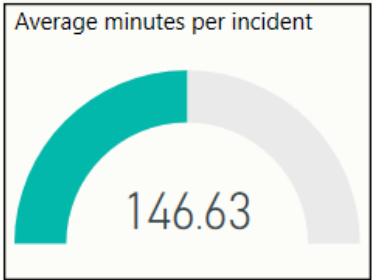
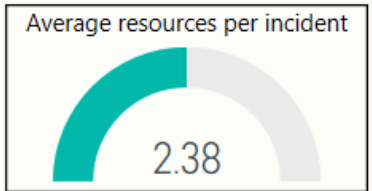


Coastal Command (Incidents and Crimes October 2018 – S'boro and Ryedale)

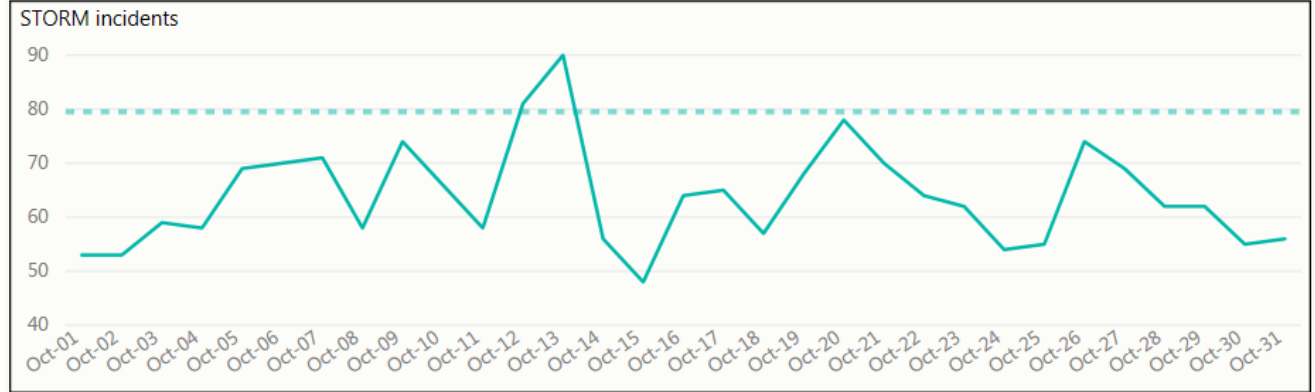
Count of all Incidents and type



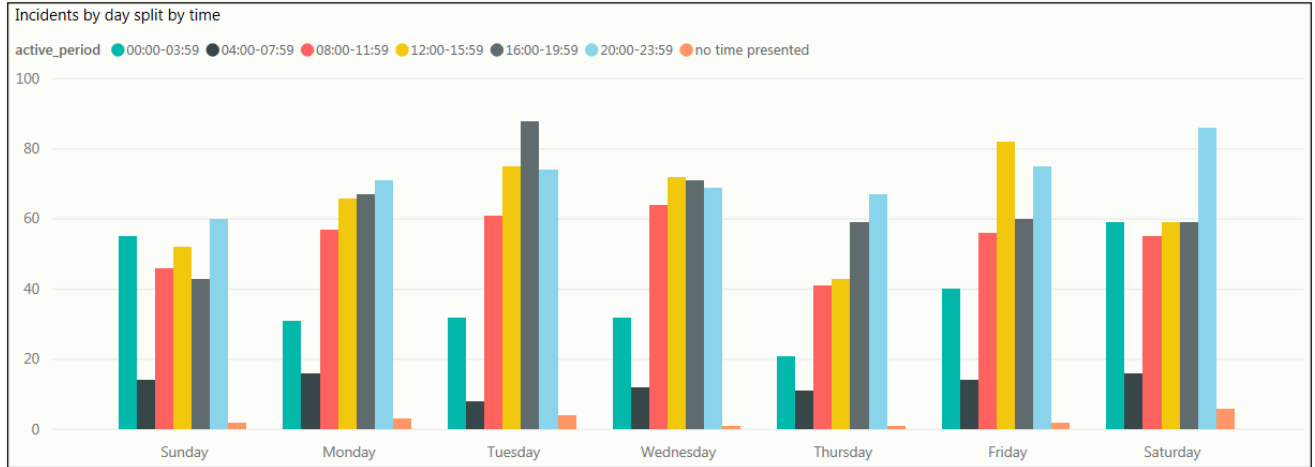
Average Officers and Time Spent



Incident Volumes by Date



Incident Volumes by Day and Time Group



Total Crimes Committed

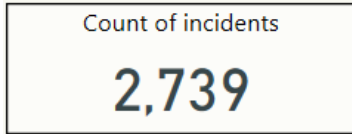
863 Crimes

Highest Wards by Crime Volume

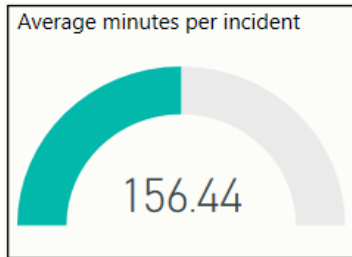
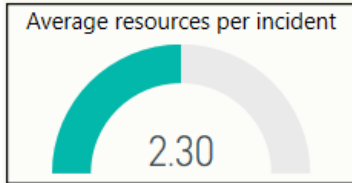
Castle	Central	Streonshalh	North Bay
191	69	46	37
		Woodlands	Eastfield
		43	36

County Command (Incidents and Crimes October 2018 – Hamb, Rich, H'gate and Craven)

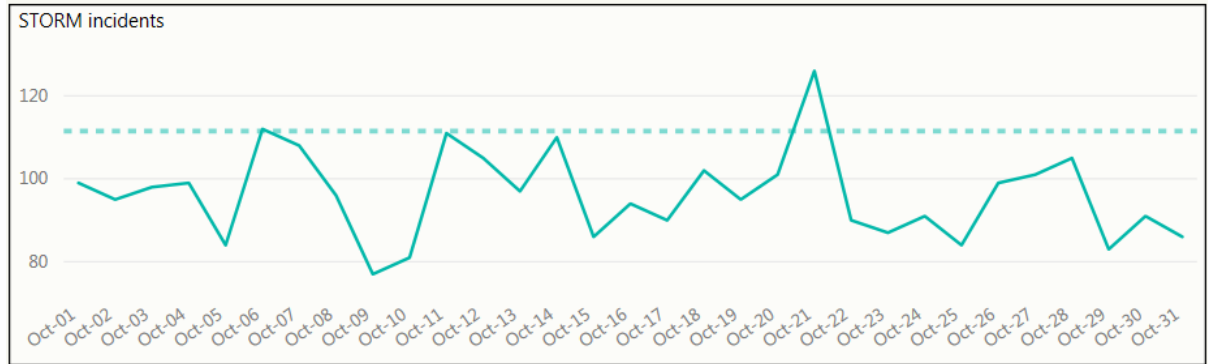
Count of all Incidents and type



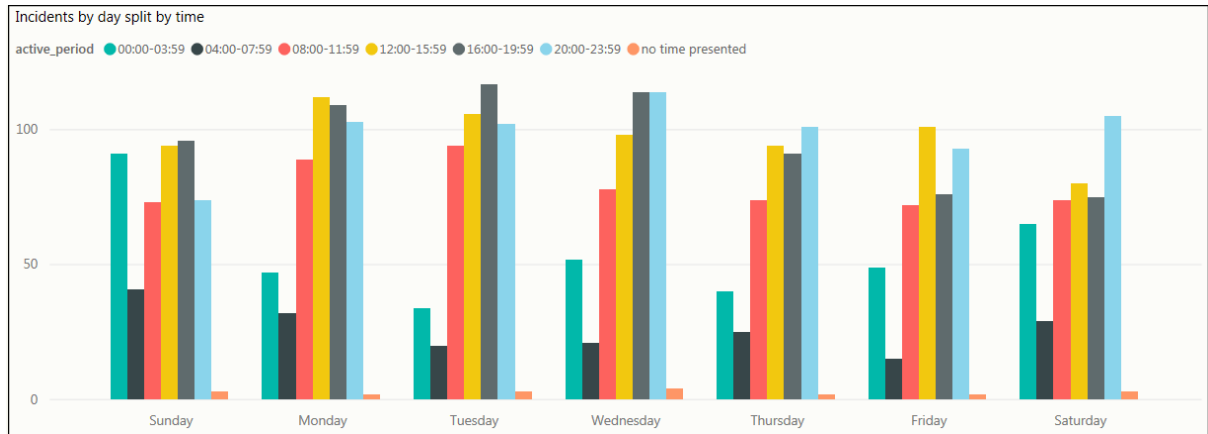
Average Officers and Time Spent



Incident Volumes by Date



Incident Volumes by Day and Time Group



Total Crimes Committed

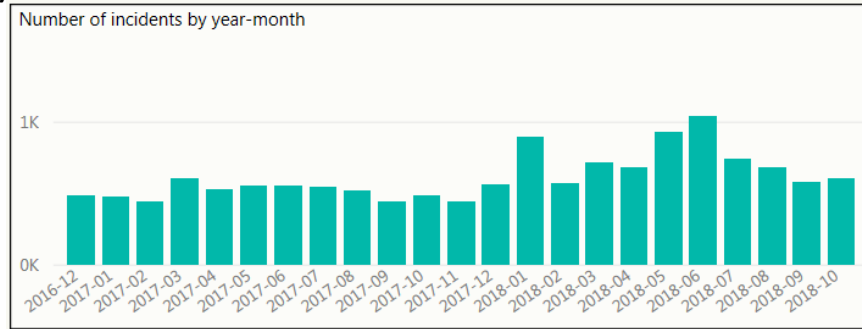
1188 Crimes

Highest Wards by Crime Volume

Low Harrogate	Northallerton ...	Thirsk	High Harro...
	48	45	40
	Granby	Hookstone	Sowerby
121	47	42	36

Mental Health

Occurrences involving a person(s) with a mental health qualifier



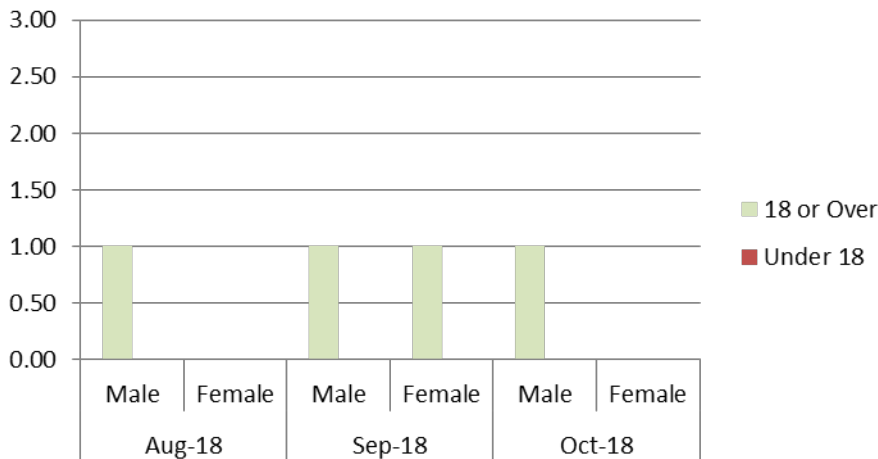
Incidents with highest number of Mental Health Tag (Oct 18)

Description	Volume with mental health tag
CONC SAFETY/TRAPPED/INJ/ILL	406
DOMESTIC INCIDENT	39
VIOLENCE	37
MISSING PERSON	31
NUISANCE	28

Incident data (left) relates to the initial police response where Mental health presented and was tagged on the incident

Use of police custody as a place of safety

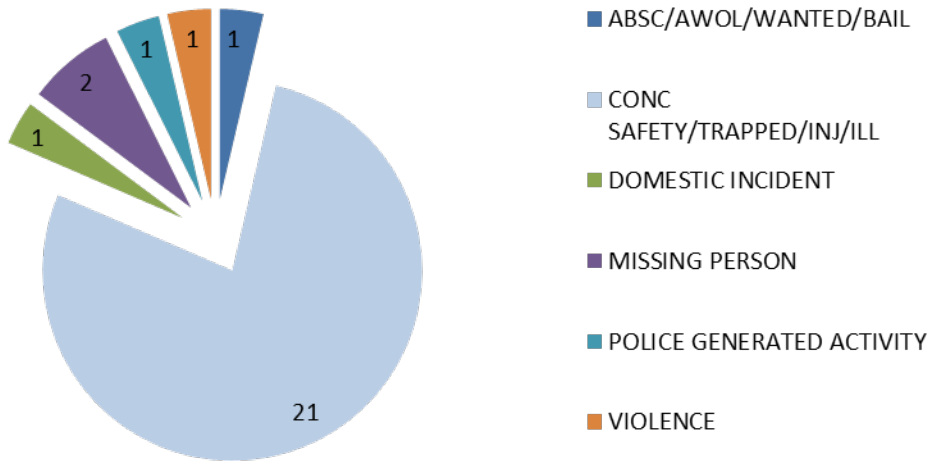
Police custody must only be used for s.136 MHA detainees in highly exceptional circumstances, e.g. genuinely unmanageable risks of resistance, aggression, violence or escape, or if also detained for an offence. We scrutinise every use of custody in these circumstances.



Use of mental health street triage teams

Street Triage (STORM Tag)	Aug-18	Sep-18	Oct-18
Hambleton	1	0	1
Scarborough	82	73	52
York & Selby	6	5	7
Total	90	78	60

Occurrence Type



HBPoS	Oct-18				Total
	< 18		18 and Over		
	Male	Female	Male	Female	
Scarborough	0	1	1	1	3
Northallerton	0	0	1	1	2
Harrogate	0	0	3	8	11
York	0	1	4	6	11
Total	27				

Time Spent Oct '18

Av Officers per job	3.9
Av time per job (hh:mm)	10:36
Total time (hh:mm)	286:27
Total Officers	106
Total NYP Occurrences	27

Outcomes of s136 – Oct 2018

Outcome	Count
Formal admission	3
Informal Admission	5
Not open to services. Returned to the community without follow up	3
Open to services, returned to the community with follow up by current service	12
Returned to the community with follow up arranged at assessment	4

Mode of Transport Oct '18

Mode of Transport	Total
Ambulance	20
Caged police vehicle	6
Uncaged police vehicle	1
Not Recorded/Other	0
Grand Total	27

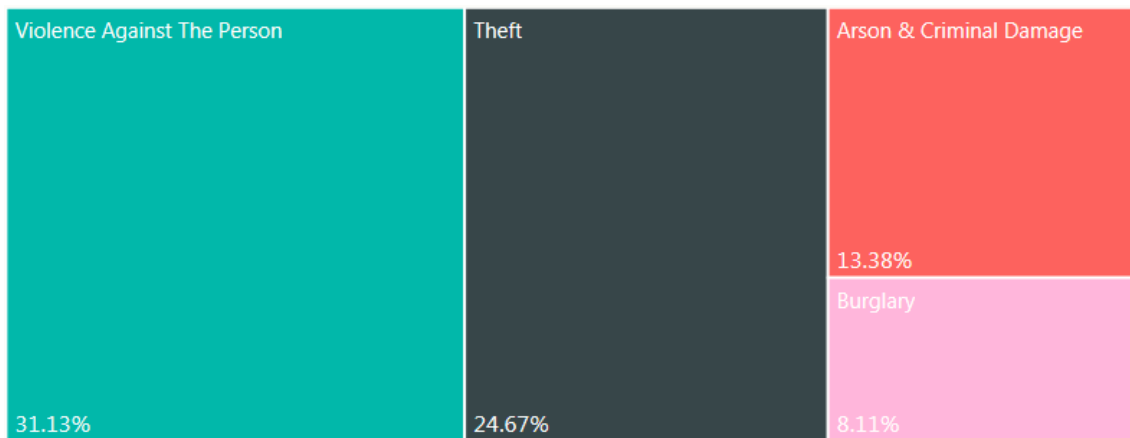
CRIME – Apr - Oct 2018 (Crimes committed)

	Apr to Oct-17	Apr to Oct-18	% Diff
Arson & Criminal Damage	3542	3681	3.92%
Burglary	2185	2231	2.11%
Drug Offences	838	1024	22.20%
Fraud	286	343	19.93%
Misc Crimes Against Society	399	443	11.03%
Possession Of Weapons	121	182	50.41%
Public Order Offences	878	1418	61.50%
Robbery	94	127	35.11%
Sexual Offences	907	1237	36.38%
Theft: All Other Theft	2689	2993	11.31%
Theft: Bicycle Theft	730	812	11.23%
Theft: Shoplifting	2792	2688	-3.72%
Theft: Theft From Person	225	292	29.78%
Vehicle Offences	1374	1470	6.99%
Grand Total	23368	27502	11.03%

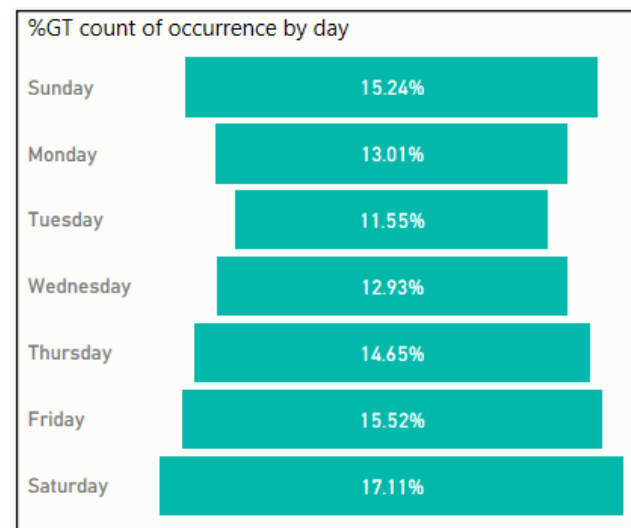
	Apr to Oct-17	Apr to Oct-18	% Diff
Violence Against The Person	6308	8561	35.72%

NB. Due to changes in Crime recording legislation the above figures cannot be compared due to new recording requirements for Stalking Type Crimes (Apr 2018)

Year to Date highest % of Crime Types



% split of all crimes by day of the week



ANTI SOCIAL BEHAVIOUR, PUBLIC SAFETY & WELFARE AND CASUALTIES FROM ROAD TRAFFIC COLLISIONS THAT ARE KILLED & SERIOUSLY INJURED

HAM & RICH SNC

	Apr to Oct-18	% Same Period '17
ASB	1951	-15%
PSW	7002	2.2%
Miss Person	152	-29.3%
Concern Safety	1547	-1.8%
Domestic Inc	399	-10.3%
Sus Circs	2310	6.8%
PSW Other	2594	5.7%
KSI	181	-11.3%

SCAR & RYE SNC

	Apr to Oct-18	% Same Period '17
ASB	4429	-5.9%
PSW	12447	2.3%
Miss Person	444	-28.4%
Concern Safety	3217	-2%
Domestic Inc	1003	1.8%
Sus Circs	3300	13.1%
PSW Other	4483	2.7%
KSI	245	-3.5%

CRAVEN SNC

	Apr to Oct-18	% Same Period '17
ASB	779	3.3%
PSW	2698	12.6%
Miss Person	63	-6.0%
Concern Safety	694	12.8%
Domestic Inc	138	-2.1%
Sus Circs	856	4.5%
PSW Other	947	25.4%
KSI	126	14.5%

HARROGATE

	Apr to Oct-18	% Same Period '17
ASB	2894	-13.6%
PSW	9161	4.1%
Miss Person	408	5.4%
Concern Safety	2171	5.6%
Domestic Inc	551	4.6%
Sus Circs	2808	14.3%
PSW Other	3223	-4.5%
KSI	222	-16.2%

YORK SNC

	Apr to Oct-18	% Same Period '17
ASB	4944	-6.7%
PSW	13058	4.4%
Miss Person	395	-20.4%
Concern Safety	3350	-1.8%
Domestic Inc	895	-5.4%
Sus Circs	3546	9.0%
PSW Other	4872	10.7%
KSI	268	-6.6%

SELBY SNC

	Apr to Oct-18	% Same Period '17
ASB	1616	-14.8%
PSW	4944	11.9%
Miss Person	129	-11.6%
Concern Safety	1151	12.2%
Domestic Inc	363	11.3%
Sus Circs	1640	6.5%
PSW Other	1661	20.4%
KSI	99	-5.7%

Local Policing – Police and Crime Plan 2017-2021

Hambleton	Apr to Oct 17	Apr to Oct 18	Diff
Burglary	177	198	11.9%
Road	3286	2972	-9.6%
Mental Health	520	655	26%

Scarborough	Apr to Oct 17	Apr to Oct 18	Diff
Burglary	259	338	30.5%
Drug Offences	187	248	32.6%
ASB	3978	3745	-5.9%

Richmondshire	Apr to Oct 17	Apr to Oct 18	Diff
Drug Offences	29	18	-37.9%
Burglary	130	77	-40.8%
ASB	879	624	-29%

Ryedale	Apr to Oct 17	Apr to Oct 18	Diff
Burglary	81	98	21%
Drug Offences	34	50	47.1%
ASB	728	683	-6.2%
Road	2197	1748	-20.4%

Harrogate	Apr to Oct 17	Apr to Oct 18	Diff
Burglary	388	523	34.8%
ASB	3349	2894	-13.6%
Road	4467	4905	9.8%
Cyber	54	87	61.1%

York	Apr to Oct 17	Apr to Oct 18	Diff
Violence	1862	2445	31.3%
Burglary	618	551	-10.8%
ASB	5301	4944	-6.7%
Cyber	58	114	96.6%

Craven	Apr to Oct 17	Apr to Oct 18	Diff
Burglary	156	197	26.3%
Road	1668	1474	-11.6%
Crime	1140	1397	22.5%

Selby	Apr to Oct 17	Apr to Oct 18	Diff
Drugs	74	82	10.8%
Burglary	372	248	-33.3%
ASB	1896	1616	-14.8%
Cyber	18	51	183.3%

Prevention

An internal wildlife crime course for a range of colleagues within NYP has been run in North Yorkshire for the first time, enlisting the help of key partners to deliver training which has enabled a further 30 colleagues across NYP to be trained as Wildlife Crime Officers, doubling our contingent, and providing greater resilience. Two RTF colleagues have been trained and passed a drone course, which has a range of uses in response to rural and wildlife crime ranging from prevention to enforcement.

Op Woollen continues to offer proactive prevention advice to all farms in North Yorkshire. Op Woodchip owned by PCSO's on area offering prevention to rural businesses. Regular property marking schemes being conducted by PCSO's at rural business, sports clubs, livery yards, auction marts, etc. Follow up visits and enquiries to victims of crime, and those at risk in the vicinity following criminal activity.

Intelligence which indicates rural crime in an area has been used to establish Mobile Rural Watches. These enable communities to assist the police and tackle rural criminality. Over 150 PSV's have been recruited this year for MRW's.

Intelligence

Intelligence collection plans are in place for two new OCG's, Op Extractor and Op Existence, with use of various intelligence sources, including open source. A regional top ten list for poaching nominals has been produced, which is utilised to share intelligence on these subjects, and joint prosecutions to be enabled.

Enforcement

National Day of action for rural crime took place in November, which coincided with Op Checkpoint for the North East Region, and was well supported from within NYP with numerous NPT's and MRW working alongside RTF. Further activity dates are planned in for 2019.

Days of action are planned in for Op Galileo (poaching), Op Byway (illegal off-roading), Op Eyeball (fly tipping) and support of MRW's. Recent Op Eyeball event held with RPG led to seizure of 17 vehicles for a number of offences, and several investigations commenced by council teams.

Number of ongoing investigations and court cases for both wildlife and rural crime – but especially noteworthy are cock fighting case, and badger persecution case which are due shortly. There are significant investigations taking place into OCG's involved in livestock theft, and farm and machinery theft in the north of the County, as well as other crime groups from West Yorkshire, and within the county in the York area. These groups are being disrupted through arrests, seizures, and use of key partners, such as Trading Standards and Food Standard Agency.

Reassurance

The team are continuing to utilise social media and traditional media to get various messages across. RTF usage of Community Messaging compares favourably when set against entire districts (~30 messages per month). The local footprint provided by PCSO's and PC's at meetings, marts, etc., continues to ensure feedback is provided to rural communities. TV crew are coming to film RTF activity in December which will promote the work of the team, and provide reassurance to the public that NYP are tackling rural / wildlife crime.

GLOSSARY

Glossary

- ASB = Anti-Social Behaviour
- CMS = Community Messaging System
- Concern Safety = Concern for Safety – includes all occurrences where there is a concern for an individual's safety or welfare
- Fraud Offences = These are not included in the crime statistics as they are not reported by forces to the Home Office. Instead these crimes are passed to Action Fraud and statistics are collated by that agency
- FSU = Firearms Support Unit
- I Grade = priority assigned by control room for an incident requiring ImmEDIATE police response
- KSI = A casualty Killed or Seriously Injured as a result of a Road Traffic Collision on a public road
- MCU = Major Crime Unit
- Miss Pers = Missing Person
- MO = Modus Operandi
- NPS = New PsychoaSive Substances is the official term for Legal Highs
- NTE = Night Time Economy
- OSU = Operational Support Unit – a specialist unit which is deployed around the force through tactical bidding process
- OPL = Over Prescribed Limit typically the term used to describe failing a breath test
- PCSO = Police Community Support Officer
- PSW = Personal Safety and Welfare
- Resolved Outcome = A crime where an offender has been dealt with through sanction or restorative justice.
- RPG = Roads Policing Team
- SNC = Safer Neighbourhood Command – Area of Policing attributed to
- Sus Circs = Suspicious Circumstances – includes Insecure premises and Vehicles
- TIC = Taken Into Consideration is typically where an offender admits to further offences to avoid potentially being pursued for these at a later date.

Public accountability meeting

Part b) People



Meeting: 27 November 2018

Reporting Period: As at end of October 2018

NB: Statistics remain provisional and subject to change

HR OVERVIEW

Police Officers

	Apr 18	May 18	Jun 18	Jul 18	Aug 18	Sep 18	Oct 18	Nov 18	Dec 18	Jan 19	Feb 19	Mar 19	Mar 20
Officer Long Term FTE Target	1,400.0	1,400.0	1,400.0	1,400.0	1,400.0	1,400.0	1,400.0	1,400.0	1,400.0	1,400.0	1,400.0	1,400.0	1,400.0
Officer FTE Budget for the month after vacancy factor	1,359.5	1,355.5	1,370.5	1,389.5	1,380.5	1,373.5	1,367.5	1,391.5	1,386.5	1,401.5	1,395.5	1,394.5	1,372.0
Actual/ Projected Officer Numbers (includes recruitment)	1342.22	1,338.10	1340.70	1359.45	1,350.16	1,356.80	1,349.96	1,342.97	1,335.97	1,375.97	1,366.97	1,388.97	1393.97

The above figures have been amended to include the Officer FTE Budget for the month after vacancy factor and also what the projected numbers are for the rest of the financial year (figures in shaded boxes).

The actual number of Officers has decreased by 6.84 FTE from the previous month. The 15 leavers are broken down as 7 retirements, 2 ill health retirements, 4 resignations, 1 transfer to another force and 1 death in service. The number of leavers was higher than the leaver projections, due to a higher number officer leaving for reasons other than retirement.

8 Transferees joined NYP in October 2018, this was 4 officers lower than anticipated however further intakes being planned in order to meet the target figure of 1400.

PCSO

	Apr 18	May 18	Jun 18	Jul 18	Aug 18	Sep 18	Oct 18	Nov 18	Dec 18	Jan 19	Feb 19	Mar 19	Mar 20
PCSO Long Term FTE Target	200.0	200.0	200.0	200.0	200.0	200.0	200.0	200.0	200.0	200.0	200.0	200.0	200.00
PCSO FTE Budget for the month after vacancy factor	200.00	200.00	200.00	200.00	200.00	200.00	200.00	200.00	200.00	200.00	200.00	200.00	200.00
Actual/ Projected PCSO Numbers (includes recruitment)	208.51	206.52	206.43	202.07	201.05	196.11	194.94	193.96	193.96	191.96	191.96	190.96	196.96

The actual number of PCSOs has decreased by 1.17 FTE from the previous month.

The next intake of PCSO's is scheduled for April 2019.

HR OVERVIEW

Staff

BUDGET:	Apr 18	May 18	Jun 18	Jul 18	Aug 18	Sep 18	Oct 18	Nov 18	Dec 18	Jan 19	Feb 19	Mar 19	Mar 20
OPCC	13.0	13.0	13.0	13.0	13.0	13.0	13.0	13.0	13.0	13.0	13.0	13.0	11.0
Project Staff (incl Agency)	20.0	20.0	20.0	20.0	20.0	20.0	20.0	20.0	20.0	20.0	20.0	20.0	3.0
Commissioned Services	13.8	13.8	13.8	13.8	13.8	13.8	13.8	13.8	13.8	13.8	13.8	13.8	11.8
Corporate Services	192.1	192.1	192.1	192.1	192.1	192.1	192.1	192.1	192.1	192.1	192.1	192.1	202.8
Chief Constable	889.4	889.4	889.4	889.4	889.4	889.4	889.4	889.4	889.4	889.4	889.4	889.4	920.8
Total Staff FTE Budget for the month (after vacancy factor)	1128.0	1128.0	1128.0	1128.0	1128.0	1128.0	1128.0	1128.0	1128.0	1128.0	1128.0	1128.0	1149.5
ACTUAL:													
OPCC	10.74	10.74	10.74	9.24	8.24	10.24	10.10	10.10	10.10	10.10	10.10	10.10	10.10
Project Staff (incl Agency)	37.19	31.41	32.41	9.00	7.00	7.00	7.00	7.00	7.00	7.00	7.00	7.00	7.00
Commissioned Services	11.24	12.24	12.24	11.74	12.24	12.24	12.24	12.24	12.24	12.24	12.24	12.24	12.24
Corporate Services	201.8	197.51	195.58	194.58	195.58	191.58	190.58	193.58	199.58	200.58	200.58	201.58	201.58
Chief Constable	911.14	909.43	902.94	892.18	890.25	877.19	871.23	876.23	881.73	879.23	878.23	879.23	879.23
Total Staff against budget FTE	1172.11	1161.35	1153.91	1116.74	1113.31	1098.25	1091.15	1,099.15	1,110.65	1,109.15	1,108.15	1,110.15	1,110.15
Permanent Staff FTE	1066.91	1062.60	1056.59	1048.01	1045.50	1035.43	1033.58	1037.58	1048.08	1046.58	1046.58	1047.58	1047.58
Temporary Staff FTE (not including agency)	74.21	69.76	69.76	52.16	51.24	46.24	39.99	43.99	44.99	44.99	43.99	44.99	44.99
Agency Staff FTE	30.99	28.99	27.58	16.58	16.58	16.58	17.58	17.58	17.58	17.58	17.58	17.58	17.58
Total Staff against budget FTE	1172.11	1161.35	1153.93	1116.75	1113.32	1098.25	1091.15	1,099.15	1,110.65	1,109.15	1,108.15	1,110.15	1,110.15

The Staff Budget has been adjusted for 2017/ 2018. The budget is managed on a monthly basis depending upon business requirements and therefore is likely to change during the financial year.

The projections remain static as the majority of current recruitment is internal; therefore we are unlikely to see a significant increase in staff numbers over all.

OPCC figures do not include the PCC, DPCC or Fraser Sampson

The total number of actual Staff has decreased by 7.01 FTE from the previous month.

7.00 x agency staffs are in supernumerary posts.

10.58 x agency staff are backfill or interim postings against established posts (includes part time agency staff).

HR OVERVIEW

	Apr 18	May 18	Jun 18	Jul 18	Aug 18	Sep 18	Oct 18	Nov 18	Dec 18	Jan 19	Feb 19	Mar 19	Mar 20
Total Budget of all Officers, PCSO and Staff	2687.5	2683.5	2698.5	2717.5	2708.5	2701.5	2695.5	2719.5	2714.5	2729.5	2723.5	2722.5	2700.00
Total Actual Number of all Officers, PCSO and Staff	2721.82	2705.98	2701.06	2678.27	2664.53	2651.16	2636.06	2636.08	2640.58	2677.08	2667.08	2690.08	2701.08

Citizens in Policing

	Apr 18	May 18	Jun 18	Jul 18	Aug 18	Sep 18	Oct 18	Nov 18	Dec 18	Jan 19	Feb 19	Mar 19
Actual Specials FTE	142.00	137.00	131.00	131.00	130.00	127.00	141.00	130.00	130.00	130.00	130.00	130.00
Actual Volunteers (including Police Cadets)	266.00	268.00	246.00	240.00	265.00	290.00	289.00	265.00	265.00	265.00	265.00	265.00

The actual number of Special Constables has decreased by 3 from the previous month.

We currently have 289 volunteers in the following roles;

- Volunteer Advisors
- Front Counter Support
- Safer Neighbourhood Support
- Rural Watch Patrol
- Tape and information facilitator
- Police Cadets
- Police Cadet Leaders
- PSV Driver
- Neighbourhood Support Volunteer
- Vehicle Checker