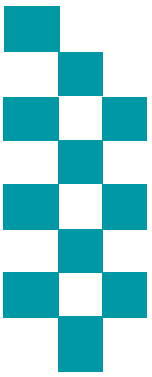


# Public Accountability Board



Meeting Date: 26<sup>th</sup> March 13:30



**BE SAFE**  
**FEEL SAFE**

# Agenda



## Caring About the Vulnerable

Mental Health

S136 Detentions



## Ambitious Collaboration



## Reinforcing Local Policing

City Command

Coastal Command

County Command

Crime Trends

ASB/PSW  
Incidents

Proactive Policing



## Enhancing the Customer Experience

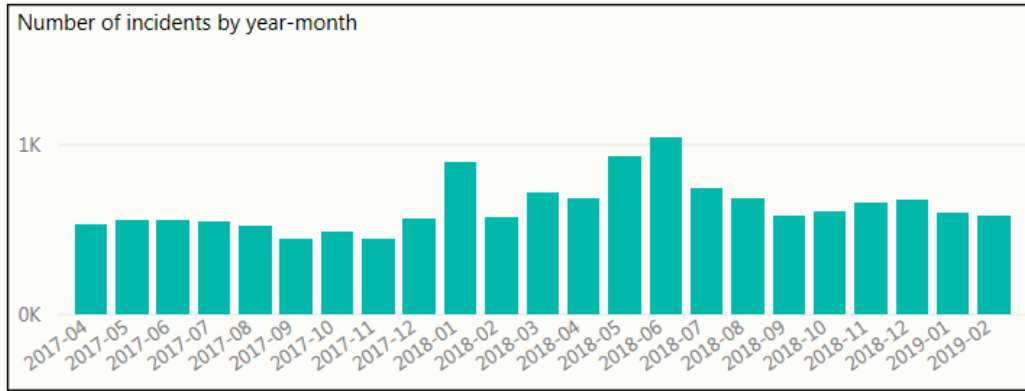
999

101

Local Priorities

# Mental Health

## Occurrences involving a person(s) with a mental health qualifier



- The monthly volume of incidents where Mental Health is seen as a factor involved remains static. With the exception of January 2018 and Summer 2018 where we saw a rise in incidents.
- Incidents with a Mental Health tag have accounted for 8.33% of all incidents in the last 22 months

## Incidents with highest number of Mental Health Tag (Apr '18 – Feb '19)

Description	Volume with mental health tag	% of All Type of Incidents
CONC SAFETY/TRAPPED/INJ/ILL	4641	39.52%
MISSING PERSON	412	25.83%
DOMESTIC INCIDENT	522	10.86%
VIOLENCE	578	8.22%
ASB NUISANCE	530	5.65%

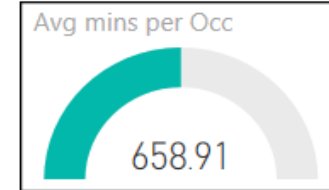
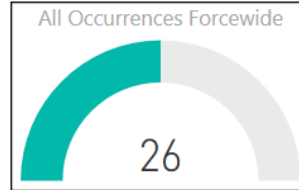
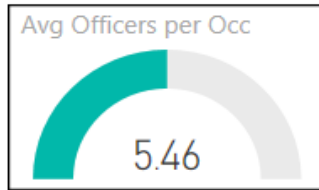
Incident data (left) relates to the initial police response where Mental health presented and was tagged on the incident

## Use of police custody as a place of safety

Police custody must only be used for s.136 MHA detainees in highly exceptional circumstances, e.g. genuinely unmanageable risks of resistance, aggression, violence or escape, or if also detained for an offence. We scrutinise every use of custody in these circumstances.

136 Detentions (Police Custody)	Apr-18	May-18	Jun-18	Jul-18	Aug-18	Sep-18	Oct-18	Nov-18	Dec-18	Jan-19	Feb-19
Under 18	0	0	0	0	0	0	0	0	0	0	0
Aged 18 or Over	1	1	5	3	1	2	0	1	4	2	2
<b>Total</b>	<b>1</b>	<b>1</b>	<b>5</b>	<b>3</b>	<b>1</b>	<b>2</b>	<b>0</b>	<b>1</b>	<b>4</b>	<b>2</b>	<b>2</b>

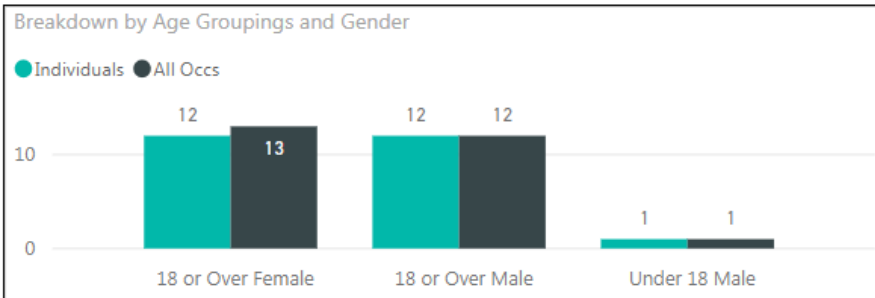
# s136 – February 2019



## By Occurrence Type

Closing Code Desc	Occs
CONC SAFETY/TRAPPED/INJ/ILL	23
MISSING PERSON	1
OTHER OFFENCES	1
VIOLENCE	1
<b>Total</b>	<b>26</b>

## Gender/Age Breakdown and Repeat Nominals

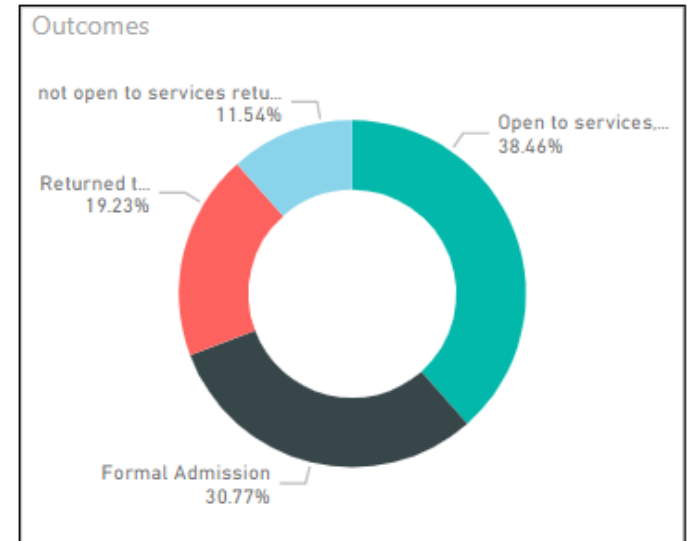


## Mode of Transport



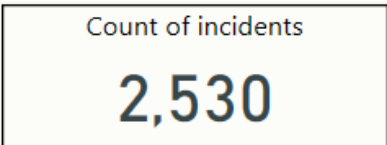
- February 2019 saw a decrease in s136 detentions when compared to the monthly average experienced (average 30 incidents per month)
- Of the 26 s136 detentions experienced in February, there was only one individual that required a repeat s136 detention.
- The 14 incidents where a Police Vehicle was used to transport an individual are for the reasons below:
  - 8 due to Police and Ambulance Risk Assessments
  - 2 due to no Ambulance available within 30 minutes
  - 1 due to the Ambulance having to be re tasked to a higher priority
  - 3 had no reason recorded

## Outcomes

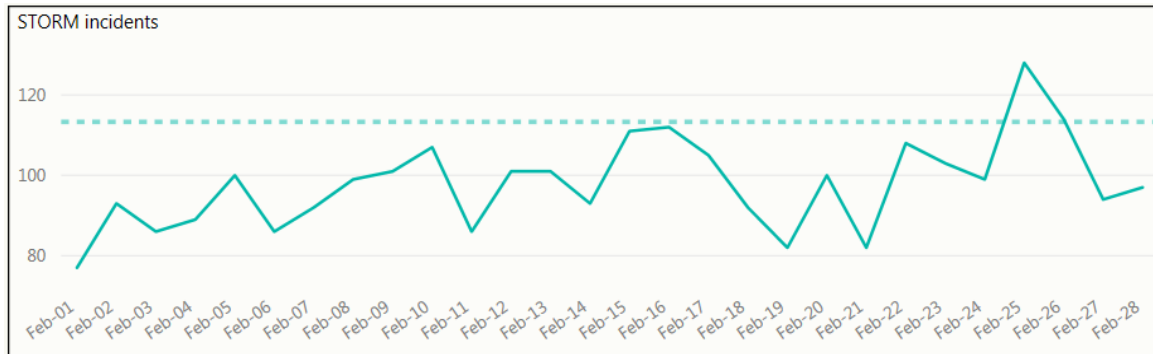


# City Command (Incidents and Crimes Committed February 2019 – York and Selby)

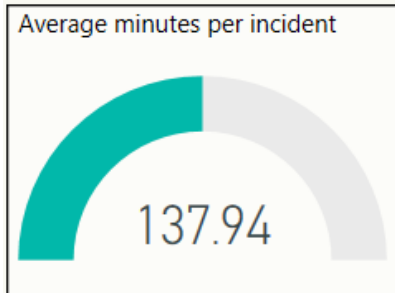
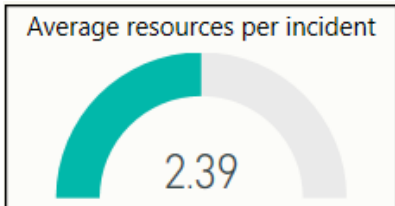
## Count of all Incidents and type



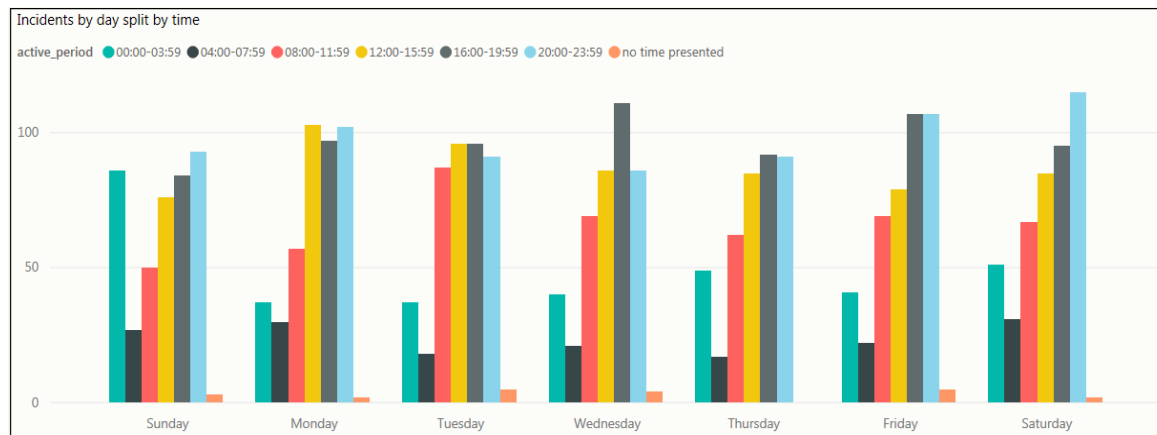
## Incident Volumes by Date



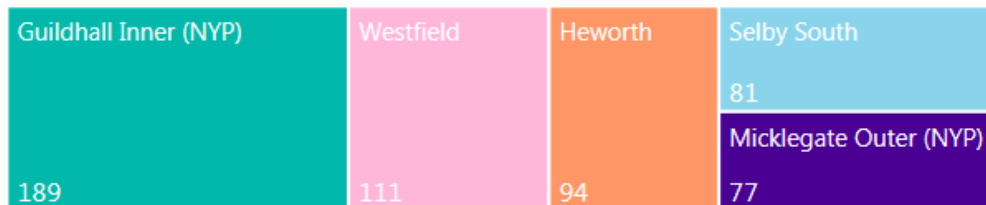
## Average Officers and Time Spent



## Incident Volumes by Day and Time Group



## Highest Wards by Crime Volume



# Coastal Command (Incidents and Crimes Committed February 2019 – Scarborough and Ryedale)

## Count of all Incidents and type

Count of incidents

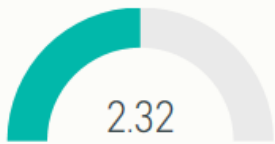
1,641

Total Crimes Committed

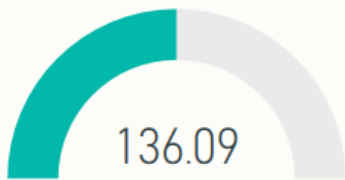
856

## Average Officers and Time Spent

Average resources per incident

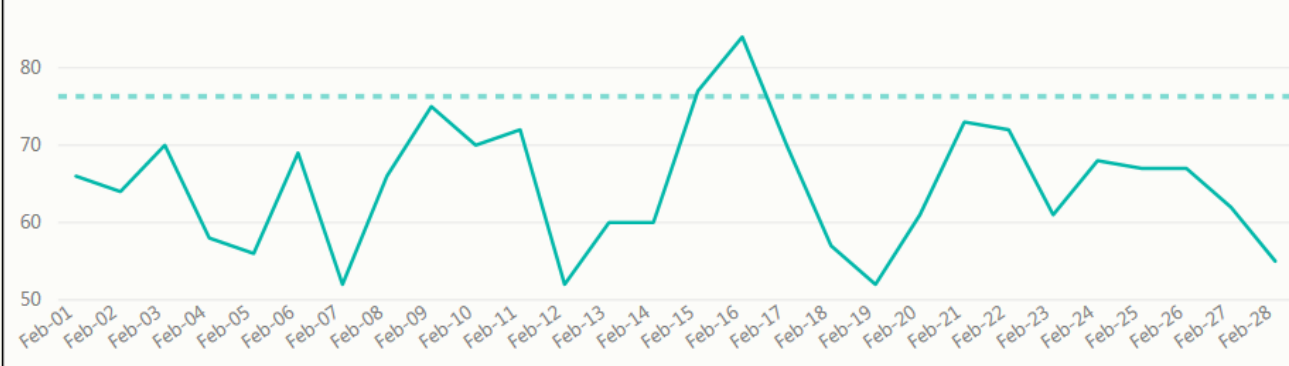


Average minutes per incident



## Incident Volumes by Date

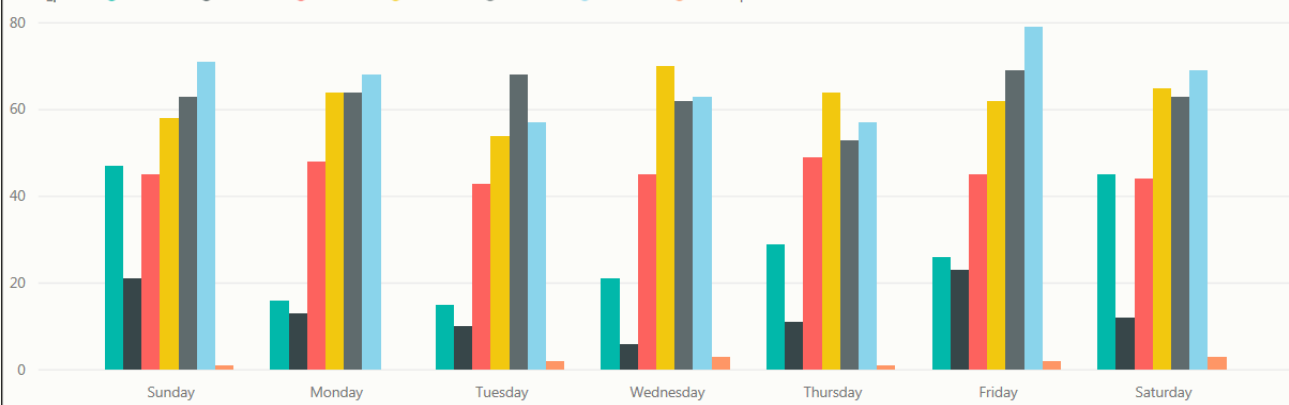
STORM incidents



## Incident Volumes by Day and Time Group

Incidents by day split by time

active\_period ● 00:00-03:59 ● 04:00-07:59 ● 08:00-11:59 ● 12:00-15:59 ● 16:00-19:59 ● 20:00-23:59 ● no time presented



Castle

200

Central

73

Eastfield

57

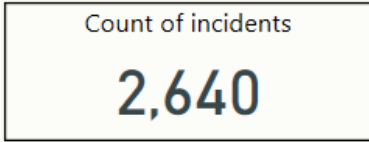
North Bay

56

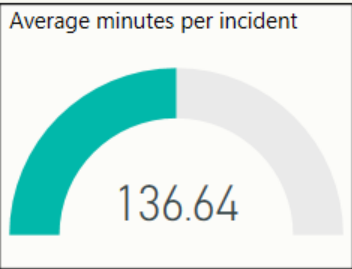
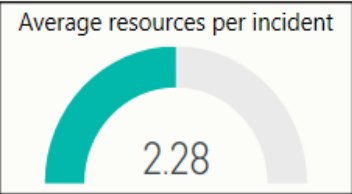
## Highest Wards by Crime Volume

# County Command (Incidents and Crimes Committed February 2019 – Hamb, Rich, H'gate and Craven)

## Count of all Incidents and type



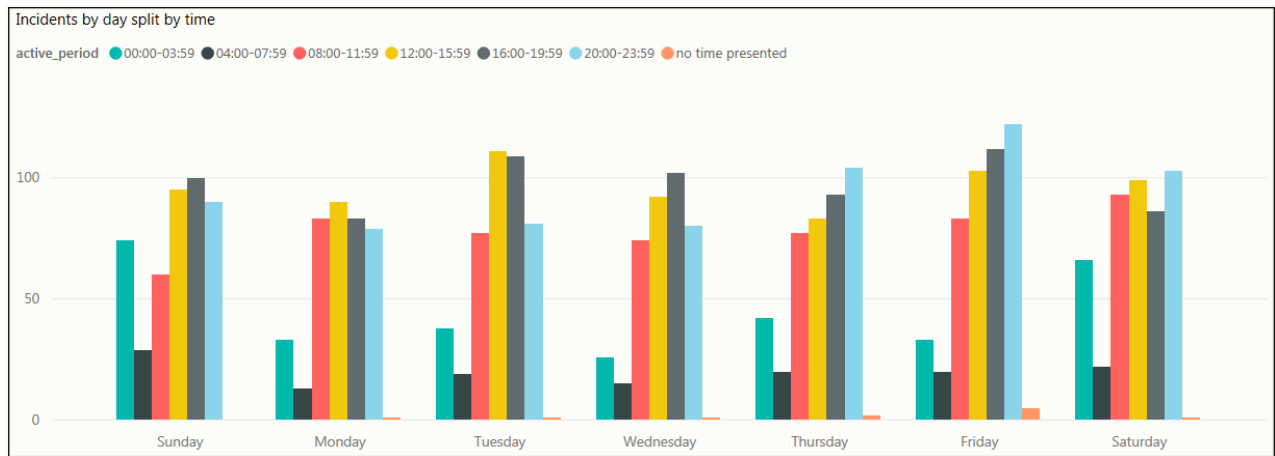
## Average Officers and Time Spent



## Incident Volumes by Date



## Incident Volumes by Day and Time Group



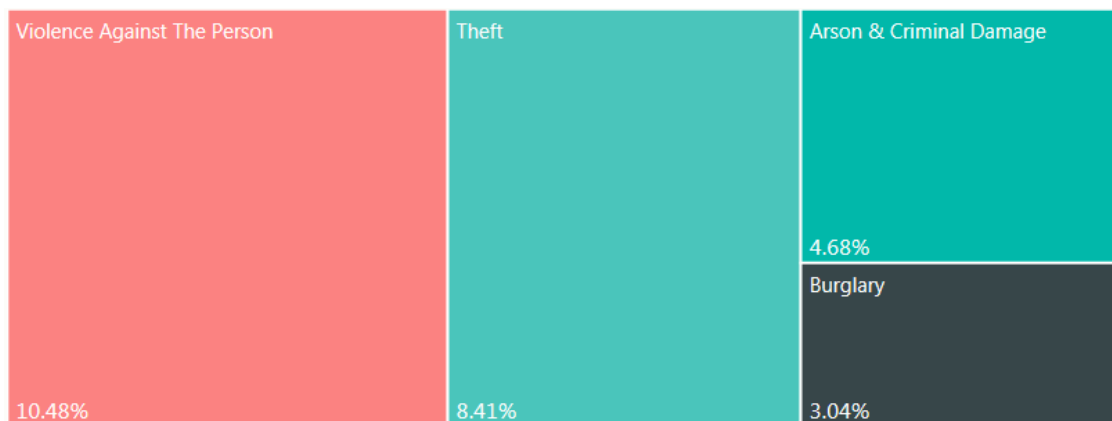
## Highest Wards by Crime Volume

Low Harrogate	High Harrog...	New Park	Knaresb...	Granby
102	51	35	32	30
	Hookstone	Northalle...	Thirsk	Salterg...
		34	31	28

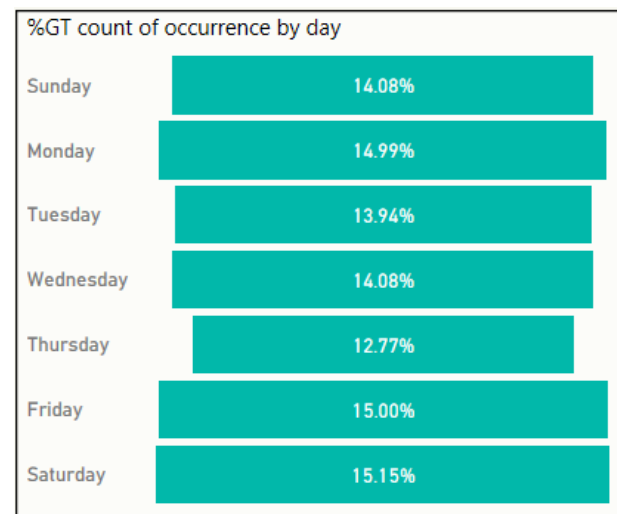
# CRIME – Apr '18 to Feb '19 (Crimes committed)

	Apr'16 –Feb'17	Apr'17 –Feb'18	Apr'18 –Feb'19	% Diff (Apr'17 to Feb '18 compared Apr '18to Feb '19)
Arson & Criminal Damage	5107	5414	5689	5.1%
Burglary	3299	3344	3664	9.6%
Drug Offences	1423	1319	1467	11.2%
Fraud	430	467	773	65.5%
Misc Crimes Against Society	638	670	761	13.6%
Possession Of Weapons	206	228	278	21.9%
Public Order Offences	1297	1360	2186	60.7%
Robbery	140	152	202	32.9%
Sexual Offences	1299	1406	1818	29.3%
Theft: All Other Theft	3998	3997	4489	12.3%
Theft: Bicycle Theft	1275	1063	1152	8.4%
Theft: Shoplifting	3715	4298	4135	-3.8%
Theft: Theft From Person	441	372	450	21.0%
Vehicle Offences	1932	2265	2209	-2.5%
Violence Against The Person	8747	9884	13557	37.2%
<b>Grand Total</b>	<b>33947</b>	<b>36239</b>	<b>42830</b>	<b>18.2%</b>

## Year to Date highest % of Crime Types



## % split of all crimes by day of the week





# ANTI SOCIAL BEHAVIOUR, PUBLIC SAFETY & WELFARE AND CASUALTIES FROM ROAD TRAFFIC COLLISIONS THAT ARE KILLED & SERIOUSLY INJURED

## HAM & RICH SNC

	Apr'18 - Feb'19	% diff Same Period '17
<b>ASB</b>	<b>2756</b>	<b>-20.6%</b>
<b>PSW</b>	<b>10864</b>	<b>3.6%</b>
Miss Person	239	-28.4%
Concern Safety	2373	0.6%
Domestic Inc	592	-15.4%
PSW Other	7660	7.9%
<b>KSI</b>	<b>286</b>	<b>-10.1%</b>

## SCAR & RYE SNC

	Apr'18 - Feb'19	% diff Same Period '17
<b>ASB</b>	<b>6158</b>	<b>-8.3%</b>
<b>PSW</b>	<b>18722</b>	<b>4.0%</b>
Miss Person	643	-27.1%
Concern Safety	4753	-1.0%
Domestic Inc	1445	-1.3%
PSW Other	11881	9.5%
<b>KSI</b>	<b>340</b>	<b>-7.1%</b>

## CRAVEN SNC

	Apr'18 - Feb'19	% diff Same Period '17
<b>ASB</b>	<b>1045</b>	<b>-8.5%</b>
<b>PSW</b>	<b>4146</b>	<b>11.8%</b>
Miss Person	87	-27.5%
Concern Safety	1012	4.0%
Domestic Inc	202	-3.3%
PSW Other	2845	18.2%
<b>KSI</b>	<b>165</b>	<b>12.2%</b>

## HARROGATE

	Apr'18 - Feb'19	% diff Same Period '17
<b>ASB</b>	<b>3989</b>	<b>-16.9%</b>
<b>PSW</b>	<b>14038</b>	<b>4.0%</b>
Miss Person	600	-2.4%
Concern Safety	3216	1.5%
Domestic Inc	832	1.6%
PSW Other	9390	5.6%
<b>KSI</b>	<b>341</b>	<b>-15.4%</b>

## YORK SNC

	Apr'18 - Feb'19	% diff Same Period '17
<b>ASB</b>	<b>7048</b>	<b>-7.8%</b>
<b>PSW</b>	<b>20421</b>	<b>9.5%</b>
Miss Person	646	-13.6%
Concern Safety	5146	1.4%
Domestic Inc	1280	-9.4%
PSW Other	13349	16.9%
<b>KSI</b>	<b>450</b>	<b>6.4%</b>

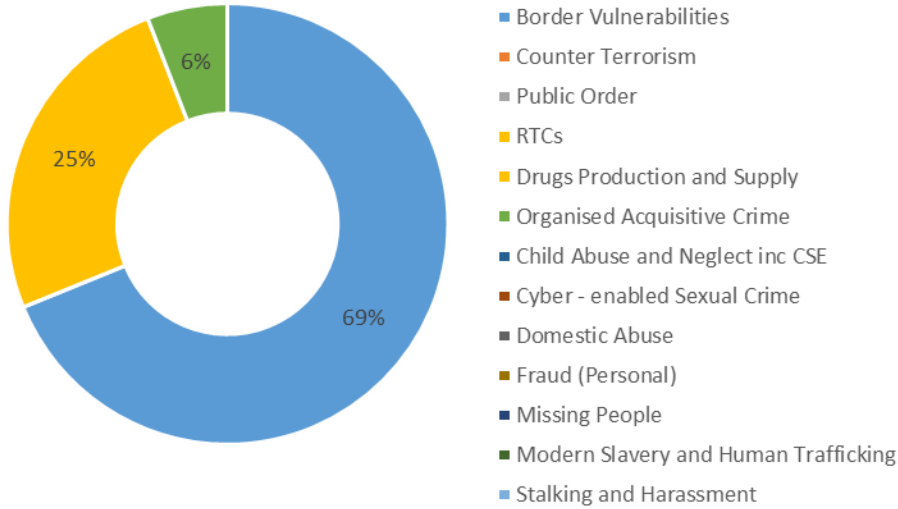
## SELBY SNC

	Apr'18 - Feb'19	% diff Same Period '17
<b>ASB</b>	<b>2195</b>	<b>-16.2%</b>
<b>PSW</b>	<b>7572</b>	<b>11.5%</b>
Miss Person	174	-17.5%
Concern Safety	1691	6.8%
Domestic Inc	576	18.5%
PSW Other	5131	13.8%
<b>KSI</b>	<b>155</b>	<b>4.7%</b>

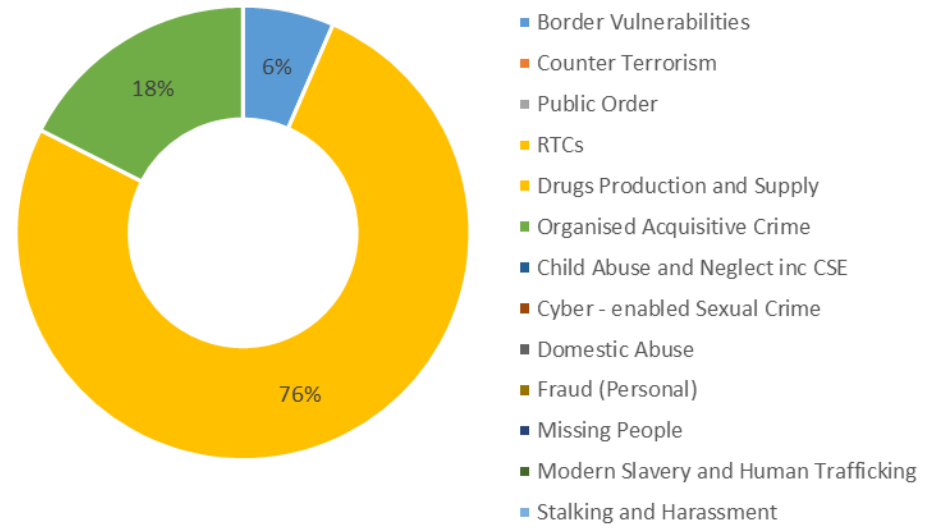
- ASB incidents continue to decrease in all SNCs
- Missing Person type incidents also show a long term decrease, in particular in the 12-18 year old age range where there has been a 13.3% reduction 2018/19 compared to 2017/18
- KSI incidents continue to fall in most areas with the exception of Craven, York and Selby. With York showing the most significant increase of 27 incidents.

# Proactivity: How has proactive policing contributed to control strategies? (Feb 19)

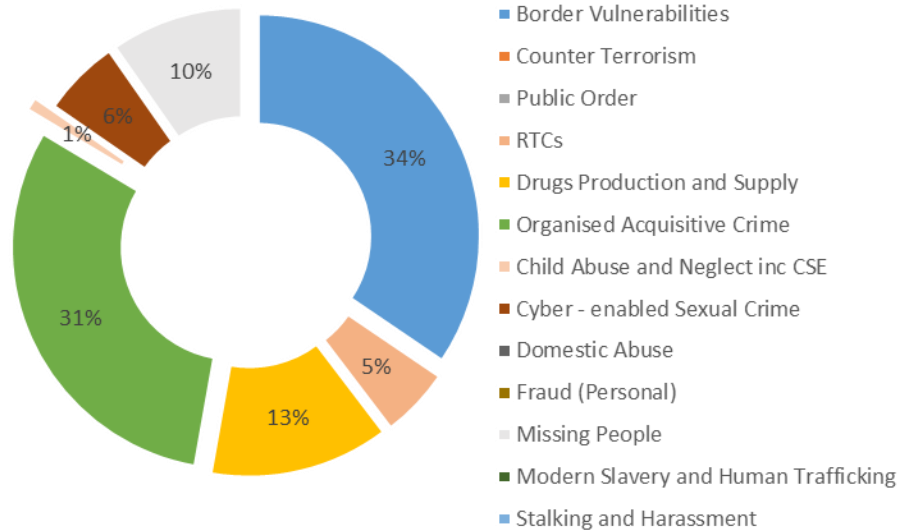
## Split of 887 hours appointed to FSU



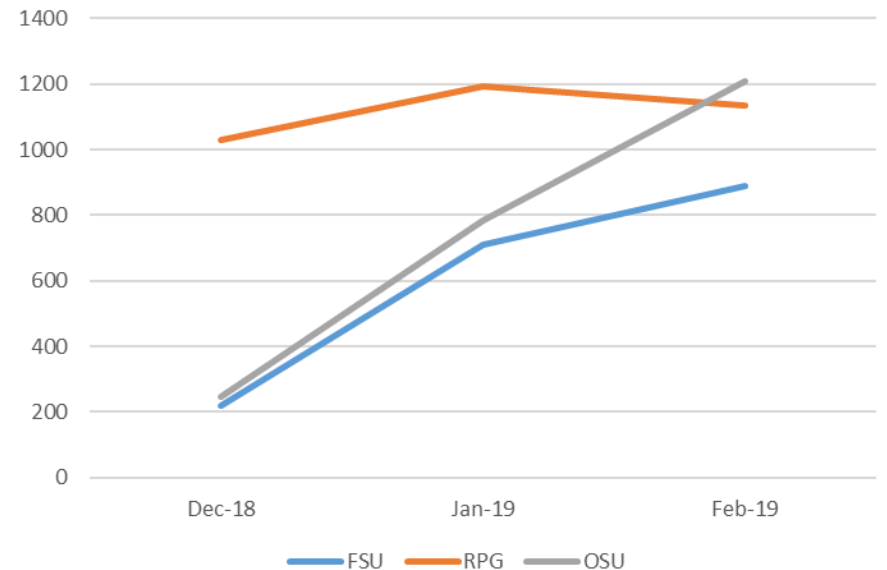
## Split of 1016 hours appointed to RPG



## Split of 1165 hours appointed to OSU

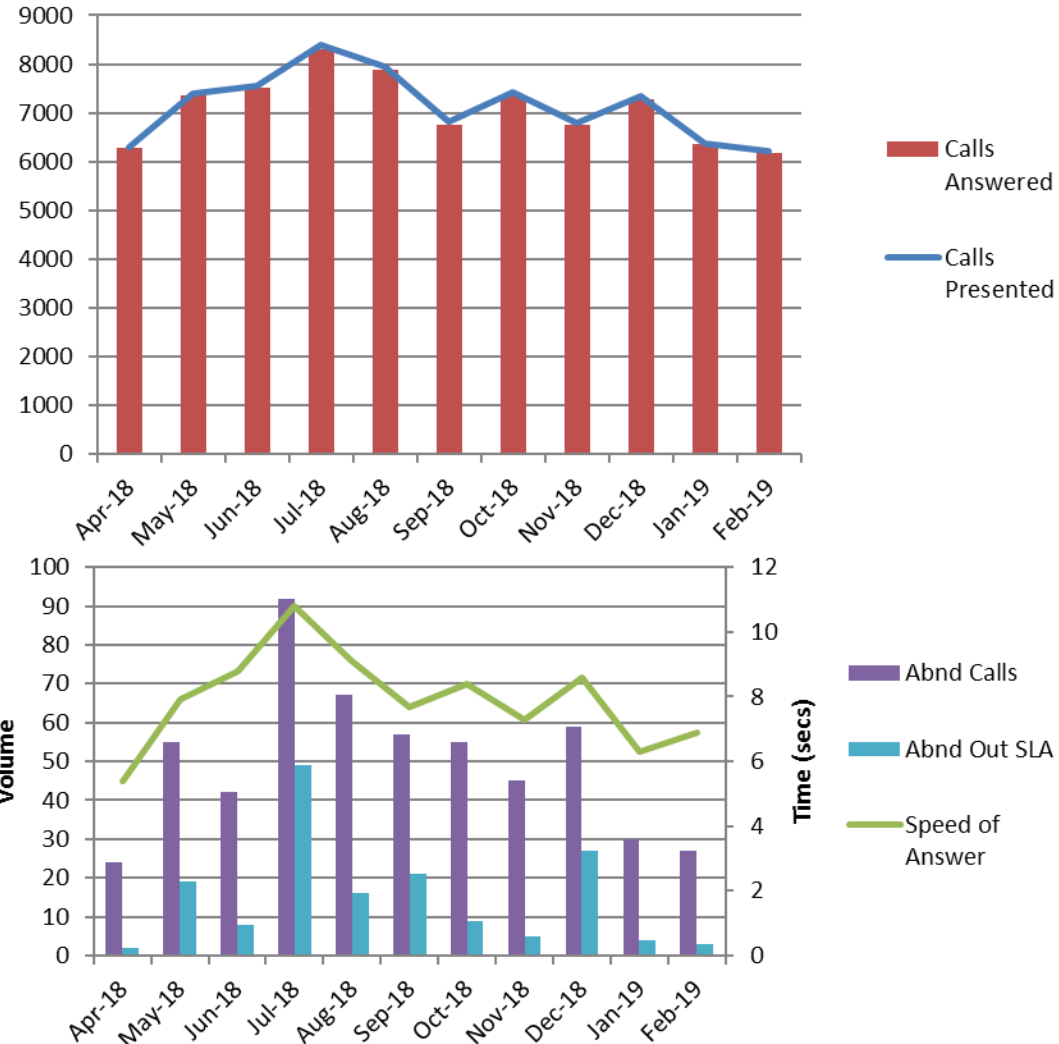


## Last 3 months Proactive Hours undertaken



# Initial Contact – 999

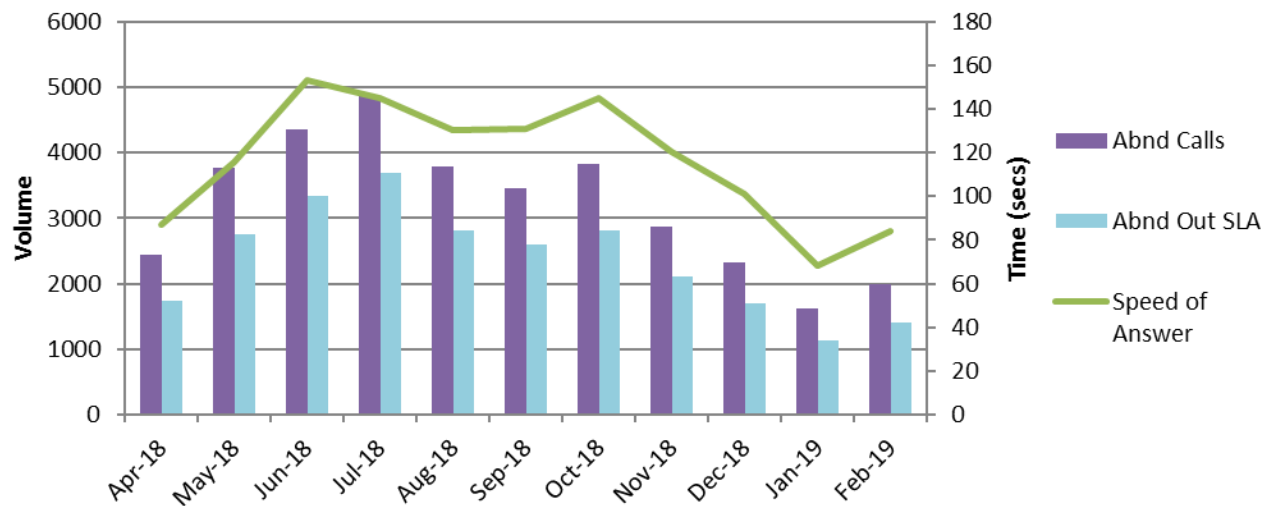
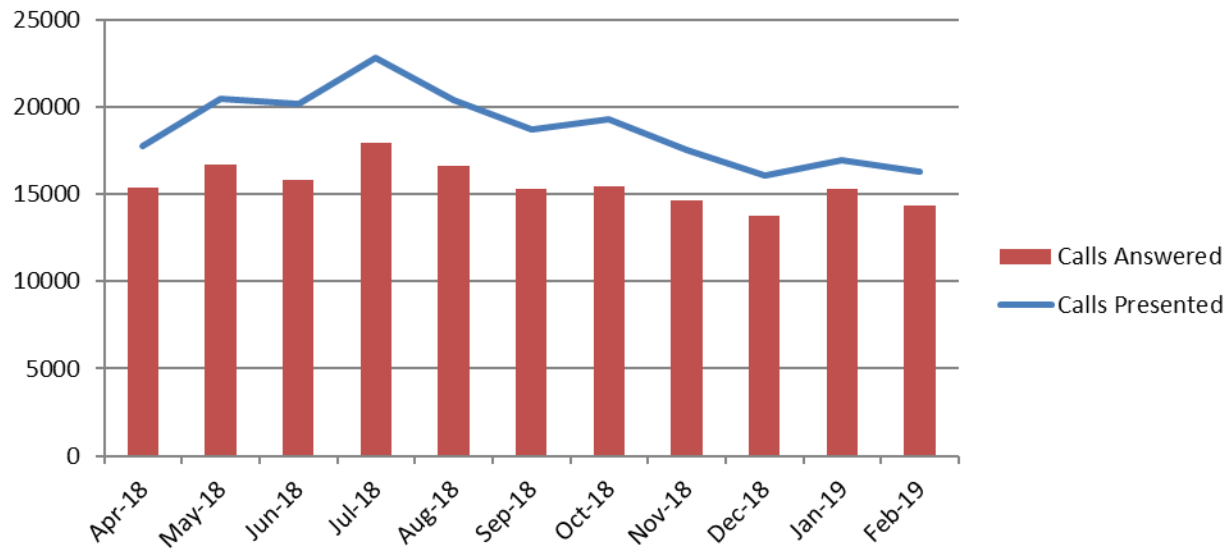
Month	Calls Presented	Calls Answered	Speed of Answer	Abnd Calls
Apr-18	6304	6280	5.4	24
May-18	7409	7354	7.9	55
Jun-18	7563	7521	8.8	42
Jul-18	8400	8308	10.8	92
Aug-18	7961	7894	9.1	67
Sep-18	6811	6754	7.7	57
Oct-18	7413	7358	8.4	55
Nov-18	6788	6743	7.3	45
Dec-18	7340	7281	8.6	59
Jan-19	6383	6353	6.3	30
Feb-19	6203	6176	6.9	27



- Highest volume of calls in any February since 2010
- There has been an increase in volume of 16.59% 2018 to 2019 and a 26.7% increase between 2017 and 2019
- Answer time consistently under 10 seconds for 7 months
- Transfers to secondary and alternate lines continue to be under national guideline of 2%

# Initial Contact - 101

Month	Calls Presented	Calls Answered	Speed of Answer	Abnd Calls
Apr-18	17782	15347	86.9	2435
May-18	20469	16697	115.5	3772
Jun-18	20153	15807	153.2	4346
Jul-18	22796	17927	145.2	4869
Aug-18	20420	16627	130.6	3793
Sep-18	18713	15266	131	3447
Oct-18	19280	15454	145.3	3826
Nov-18	17513	14653	120.3	2860
Dec-18	16061	13743	101.3	2318
Jan-19	16944	15327	68.5	1617
Feb-19	16308	14325	84.1	1983



- Abandonment rate is slightly higher in February compared to January 2019 but has reduced from 17.43% in February 2018 and 18.29% in February 2017.
- Volume is similar to February 2018.
- Call duration has consistently been over 5 minutes for 13 consecutive months

# Local Policing – Police and Crime Plan 2017-2021

Hambleton	Apr17 - Feb 18	Apr 18 - Feb 19	Diff
Burglary	268	351	31.0%
Road	5057	4539	-10.2%
Mental Health	1057	1334	26.2%

Scarborough	Apr17 - Feb 18	Apr 18 - Feb 19	Diff
Burglary	445	548	23.1%
Drug Offences	288	347	20.5%
ASB	5628	5245	-6.8%

Richmondshire	Apr17 - Feb 18	Apr 18 - Feb 19	Diff
Drug Offences	45	23	-48.9%
Burglary	167	117	-29.9%
ASB	1269	853	-32.6%

Ryedale	Apr17 - Feb 18	Apr 18 - Feb 19	Diff
Burglary	132	154	16.7%
Drug Offences	51	69	35.3%
ASB	1089	912	-16.3%
Road	3190	2769	-13.2%

Harrogate	Apr17 - Feb 18	Apr 18 - Feb 19	Diff
Burglary	636	830	30.5%
ASB	4798	3989	-16.9%
Road	7380	7531	2.0%
Cyber	109	139	27.5%

York	Apr17 - Feb 18	Apr 18 - Feb 19	Diff
Violence	2933	3916	33.5%
Burglary	918	930	1.3%
ASB	7613	7048	-7.4%
Cyber	112	207	84.8%

Craven	Apr17 - Feb 18	Apr 18 - Feb 19	Diff
Burglary	207	282	36.2%
Road	2277	2015	-11.5%
Crime	1595	1904	19.4%

Selby	Apr17 - Feb 18	Apr 18 - Feb 19	Diff
Drugs	119	132	10.9%
Burglary	534	414	-22.5%
ASB	2620	2195	-16.2%
Cyber	46	95	106.5%

# GLOSSARY

## Glossary

- ASB = Anti-Social Behaviour
- CMS = Community Messaging System
- Concern Safety = Concern for Safety – includes all occurrences where there is a concern for an individual's safety or welfare
- Fraud Offences = These are not included in the crime statistics as they are not reported by forces to the Home Office. Instead these crimes are passed to Action Fraud and statistics are collated by that agency
- FSU = Firearms Support Unit
- I Grade = priority assigned by control room for an incident requiring ImmEDIATE police response
- KSI = A casualty Killed or Seriously Injured as a result of a Road Traffic Collision on a public road
- MCU = Major Crime Unit
- Miss Pers = Missing Person
- MO = Modus Operandi
- NPS = New PsychoaSive Substances is the official term for Legal Highs
- NTE = Night Time Economy
- OCG = Organised Crime Group
- OSU = Operational Support Unit – a specialist unit which is deployed around the force through tactical bidding process
- OPL = Over Prescribed Limit typically the term used to describe failing a breath test
- PCSO = Police Community Support Officer
- PSW = Personal Safety and Welfare
- Resolved Outcome = A crime where an offender has been dealt with through sanction or restorative justice.
- RPG = Roads Policing Team
- RTF = Rural Task Force
- SNC = Safer Neighbourhood Command – Area of Policing attributed to
- Sus Circs = Suspicious Circumstances – includes Insecure premises and Vehicles
- TIC = Taken Into Consideration is typically where an offender admits to further offences to avoid potentially being pursued for these at a later date.