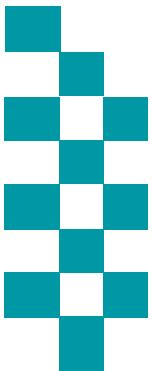


# Public Accountability Board



Meeting Date: 26<sup>th</sup> March 13:30



**BE SAFE**  
**FEEL SAFE**

# Agenda



## Caring About the Vulnerable

Mental Health

S136 Detentions



## Ambitious Collaboration



## Reinforcing Local Policing

City Command

Coastal Command

County Command

Crime Trends

ASB/PSW  
Incidents

Proactive Policing



## Enhancing the Customer Experience

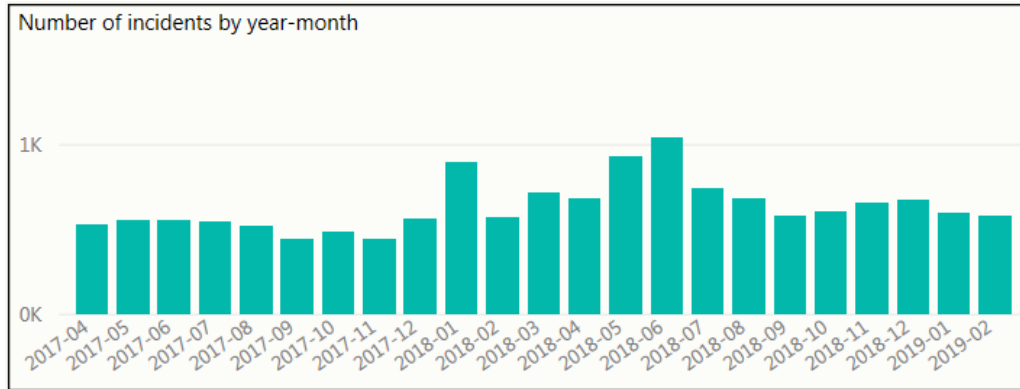
999

101

Local Priorities

# Mental Health

## Occurrences involving a person(s) with a mental health qualifier



- The monthly volume of incidents where Mental Health is seen as a factor involved remains static. With the exception of January 2018 and Summer 2018 where we saw a rise in incidents.
- Incidents with a Mental Health tag have accounted for 8.33% of all incidents in the last 22 months

## Incidents with highest number of Mental Health Tag (Apr '18 – Feb '19)

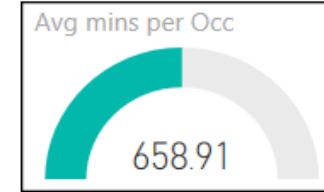
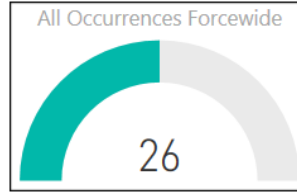
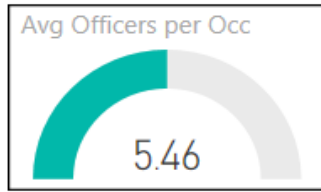
Description	Volume with mental health tag	% of All Type of Incidents
CONC SAFETY/TRAPPED/INJ/ILL	4641	39.52%
MISSING PERSON	412	25.83%
DOMESTIC INCIDENT	522	10.86%
VIOLENCE	578	8.22%
ASB NUISANCE	530	5.65%

Incident data (left) relates to the initial police response where Mental health presented and was tagged on the incident

## Use of police custody as a place of safety

Police custody must only be used for s.136 MHA detainees in highly exceptional circumstances, e.g. genuinely unmanageable risks of resistance, aggression, violence or escape, or if also detained for an offence. We scrutinise every use of custody in these circumstances.

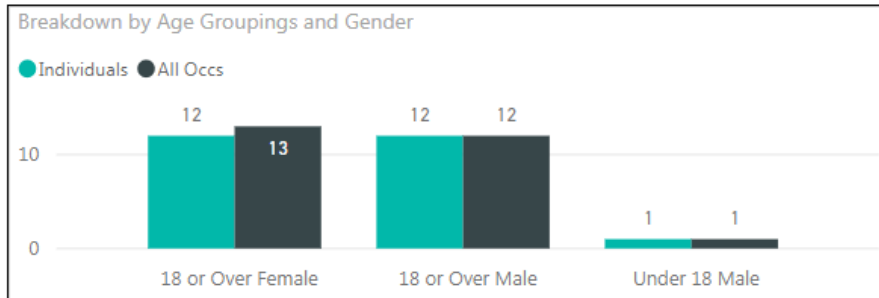
136 Detentions (Police Custody)	Apr-18	May-18	Jun-18	Jul-18	Aug-18	Sep-18	Oct-18	Nov-18	Dec-18	Jan-19	Feb-19
Under 18	0	0	0	0	0	0	0	0	0	0	0
Aged 18 or Over	1	1	5	3	1	2	0	1	4	2	2
<b>Total</b>	<b>1</b>	<b>1</b>	<b>5</b>	<b>3</b>	<b>1</b>	<b>2</b>	<b>0</b>	<b>1</b>	<b>4</b>	<b>2</b>	<b>2</b>



## By Occurrence Type

Closing Code Desc	Occs
CONC SAFETY/TRAPPED/INJ/ILL	23
MISSING PERSON	1
OTHER OFFENCES	1
VIOLENCE	1
<b>Total</b>	<b>26</b>

## Gender/Age Breakdown and Repeat Nominals

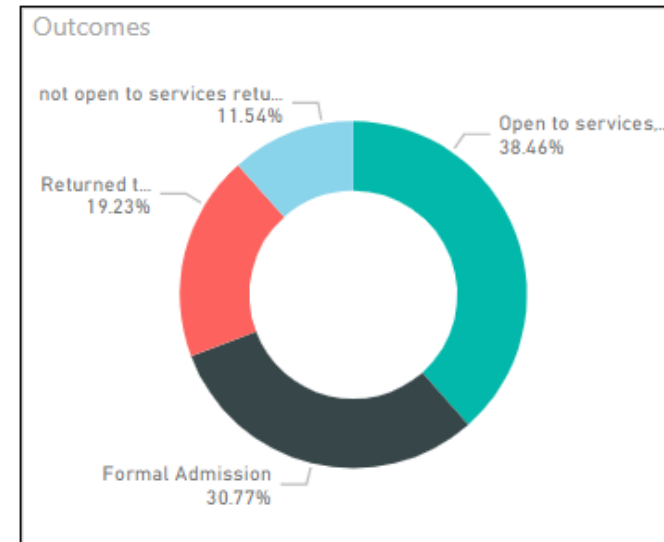


## Mode of Transport



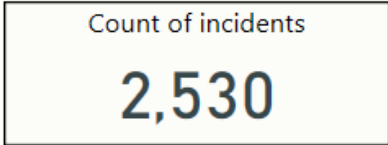
- February 2019 saw a decrease in s136 detentions when compared to the monthly average experienced (average 30 incidents per month)
- Of the 26 s136 detentions experienced in February, there was only one individual that required a repeat s136 detention.
- The 14 incidents where a Police Vehicle was used to transport an individual are for the reasons below:
  - 8 due to Police and Ambulance Risk Assessments
  - 2 due to no Ambulance available within 30 minutes
  - 1 due to the Ambulance having to be re tasked to a higher priority
  - 3 had no reason recorded

## Outcomes

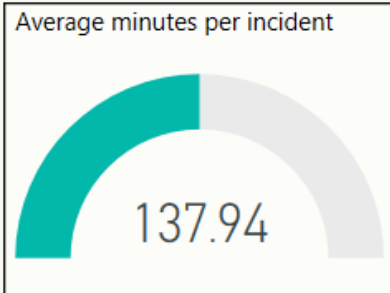
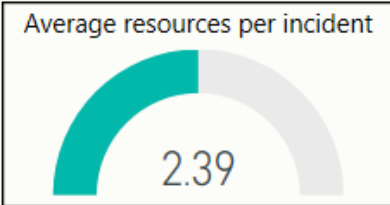


# City Command (Incidents and Crimes Committed February 2019 – York and Selby)

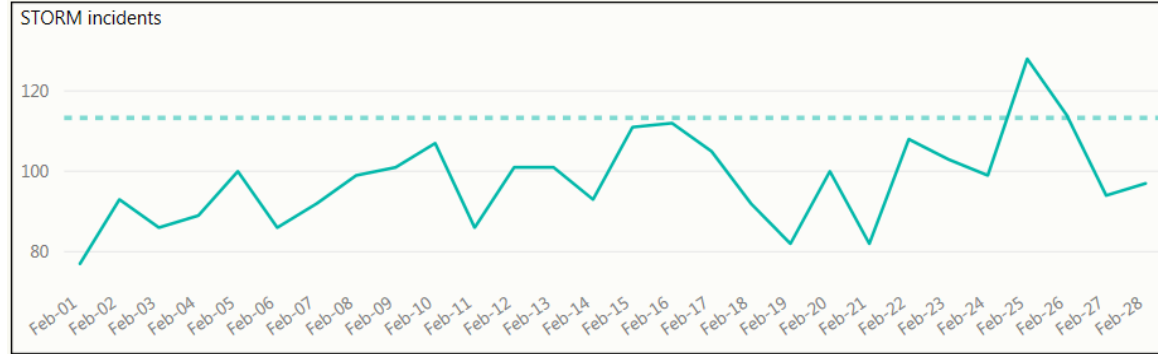
## Count of all Incidents and type



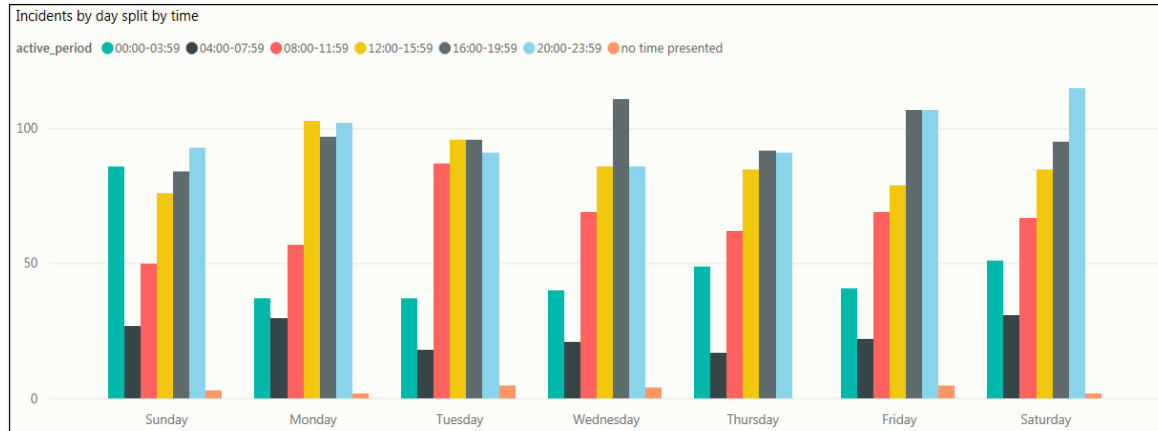
## Average Officers and Time Spent



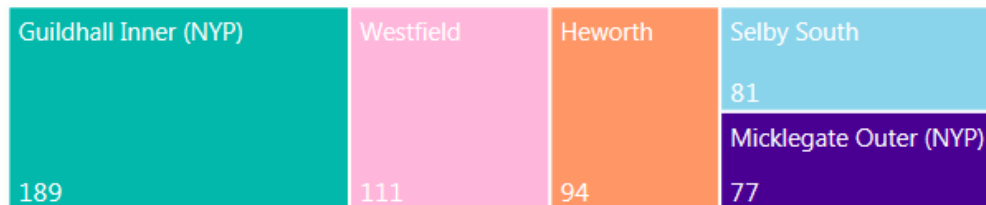
## Incident Volumes by Date



## Incident Volumes by Day and Time Group

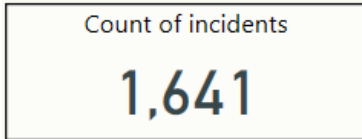


## Highest Wards by Crime Volume

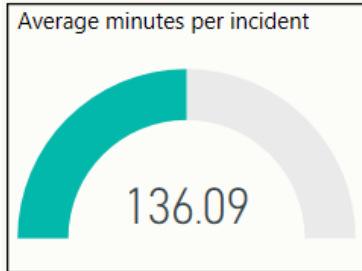
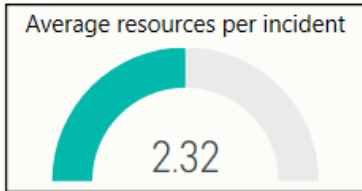


# Coastal Command (Incidents and Crimes Committed February 2019 – Scarborough and Ryedale)

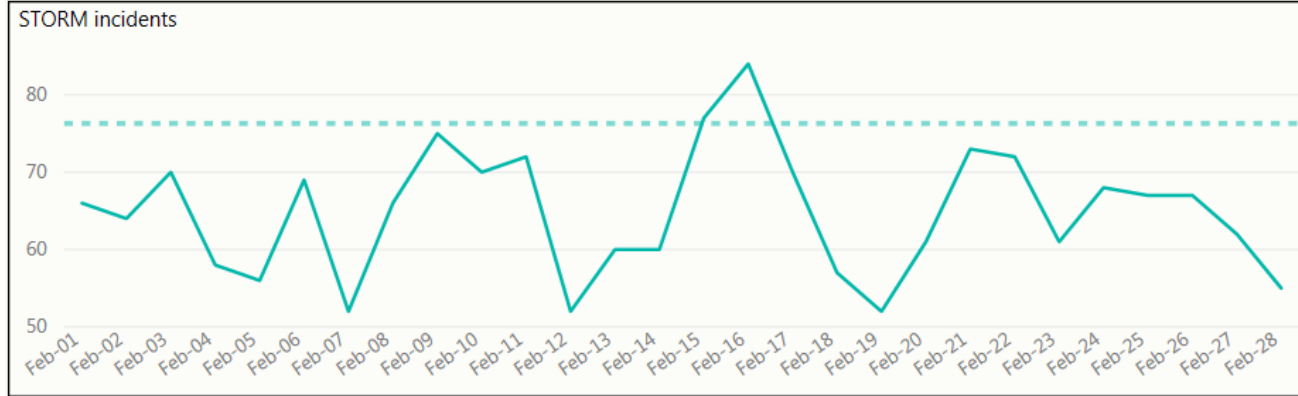
## Count of all Incidents and type



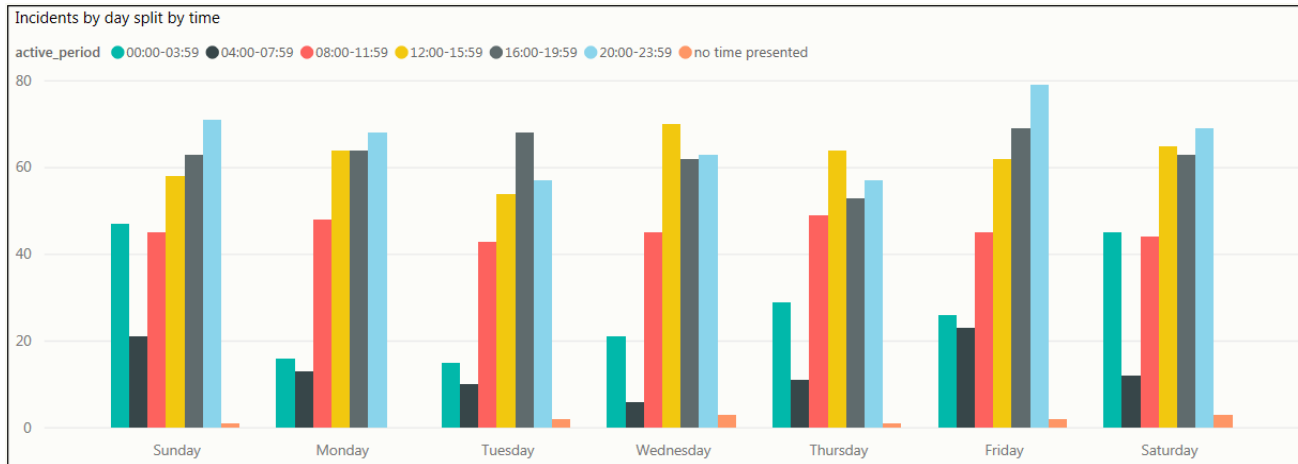
## Average Officers and Time Spent



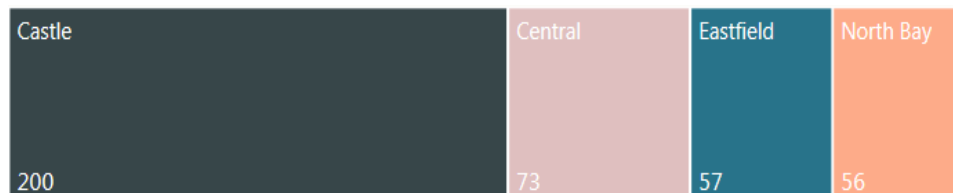
## Incident Volumes by Date



## Incident Volumes by Day and Time Group

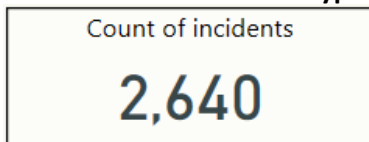


## Highest Wards by Crime Volume

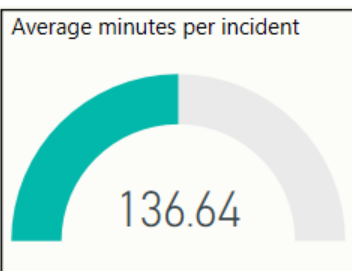
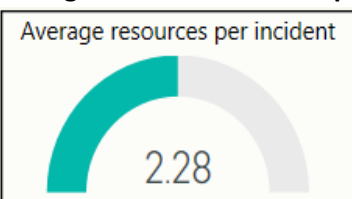


# County Command (Incidents and Crimes Committed February 2019 – Hamb, Rich, H'gate and Craven)

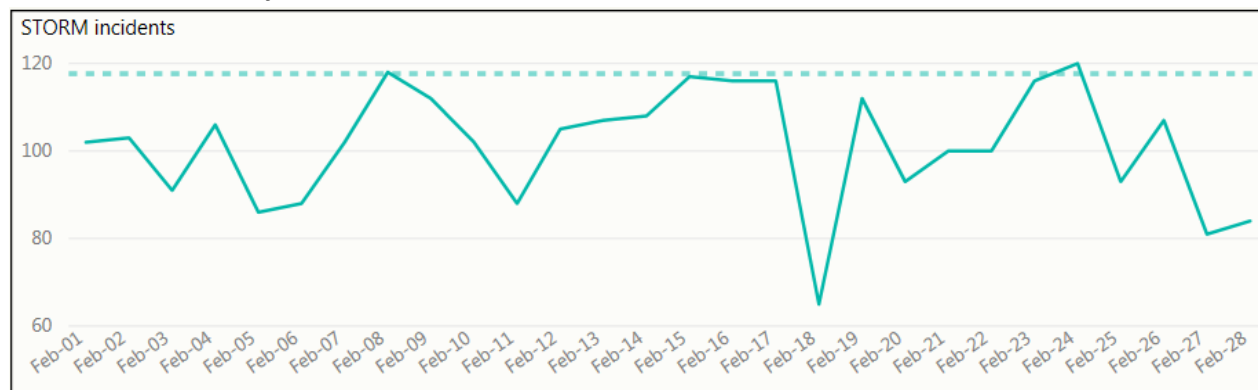
## Count of all Incidents and type



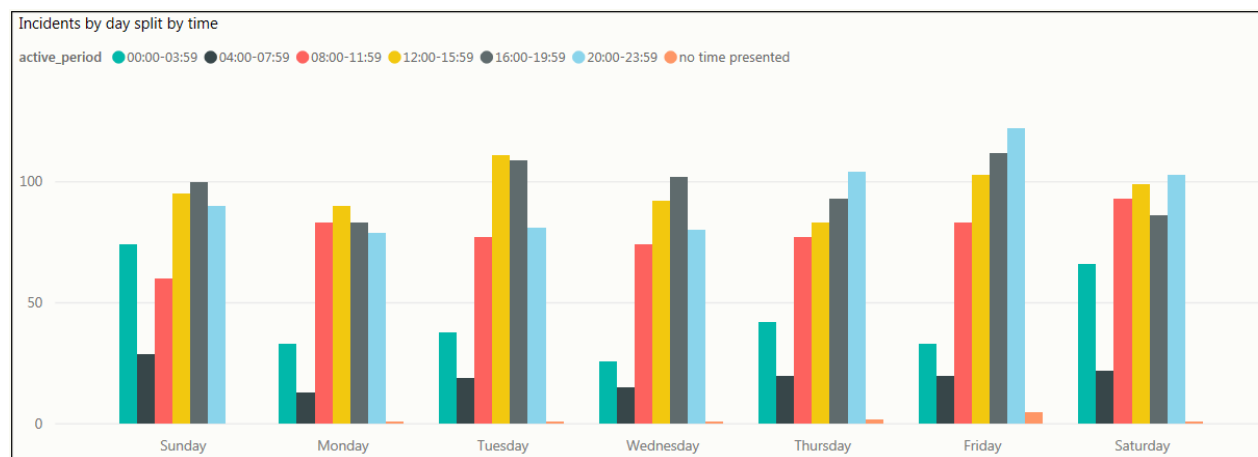
## Average Officers and Time Spent



## Incident Volumes by Date



## Incident Volumes by Day and Time Group



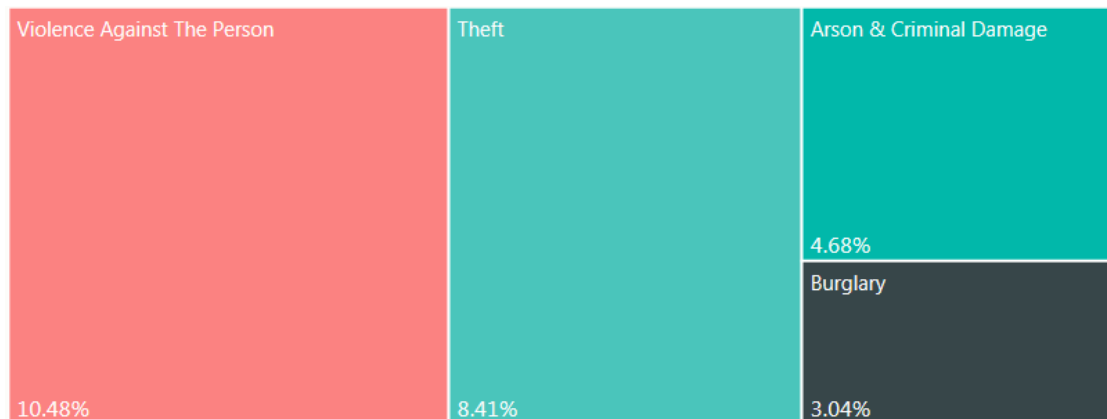
## Highest Wards by Crime Volume

Low Harrogate	High Harrog...	New Park	Knaresb...	Granby
	51	35	32	30
	Hookstone	Northalle...	Thirsk	Salterg...
102		34	31	28

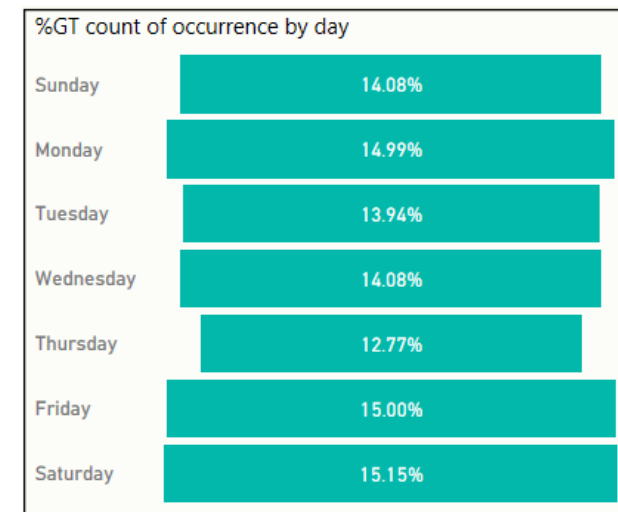
# CRIME – Apr '18 to Feb '19 (Crimes committed)

	Apr'16 –Feb'17	Apr'17 –Feb'18	Apr'18 –Feb'19	% Diff (Apr'17 to Feb '18 compared Apr '18to Feb '19)
Arson & Criminal Damage	5107	5414	5689	5.1%
Burglary	3299	3344	3664	9.6%
Drug Offences	1423	1319	1467	11.2%
Fraud	430	467	773	65.5%
Misc Crimes Against Society	638	670	761	13.6%
Possession Of Weapons	206	228	278	21.9%
Public Order Offences	1297	1360	2186	60.7%
Robbery	140	152	202	32.9%
Sexual Offences	1299	1406	1818	29.3%
Theft: All Other Theft	3998	3997	4489	12.3%
Theft: Bicycle Theft	1275	1063	1152	8.4%
Theft: Shoplifting	3715	4298	4135	-3.8%
Theft: Theft From Person	441	372	450	21.0%
Vehicle Offences	1932	2265	2209	-2.5%
Violence Against The Person	8747	9884	13557	37.2%
<b>Grand Total</b>	<b>33947</b>	<b>36239</b>	<b>42830</b>	<b>18.2%</b>

## Year to Date highest % of Crime Types



## % split of all crimes by day of the week





# ANTI SOCIAL BEHAVIOUR, PUBLIC SAFETY & WELFARE AND CASUALTIES FROM ROAD TRAFFIC COLLISIONS THAT ARE KILLED & SERIOUSLY INJURED

HAM & RICH SNC		Apr'18 - Feb'19	% diff Same Period '17
<b>ASB</b>	<b>2756</b>		-20.6%
<b>PSW</b>	<b>10864</b>		3.6%
Miss Person	239		-28.4%
Concern Safety	2373		0.6%
Domestic Inc	592		-15.4%
PSW Other	7660		7.9%
<b>KSI</b>	<b>286</b>		-10.1%

SCAR & RYE SNC		Apr'18 - Feb'19	% diff Same Period '17
<b>ASB</b>	<b>6158</b>		-8.3%
<b>PSW</b>	<b>18722</b>		4.0%
Miss Person	643		-27.1%
Concern Safety	4753		-1.0%
Domestic Inc	1445		-1.3%
PSW Other	11881		9.5%
<b>KSI</b>	<b>340</b>		-7.1%

CRAVEN SNC		Apr'18 - Feb'19	% diff Same Period '17
<b>ASB</b>	<b>1045</b>		-8.5%
<b>PSW</b>	<b>4146</b>		11.8%
Miss Person	87		-27.5%
Concern Safety	1012		4.0%
Domestic Inc	202		-3.3%
PSW Other	2845		18.2%
<b>KSI</b>	<b>165</b>		12.2%

HARROGATE		Apr'18 - Feb'19	% diff Same Period '17
<b>ASB</b>	<b>3989</b>		-16.9%
<b>PSW</b>	<b>14038</b>		4.0%
Miss Person	600		-2.4%
Concern Safety	3216		1.5%
Domestic Inc	832		1.6%
PSW Other	9390		5.6%
<b>KSI</b>	<b>341</b>		-15.4%

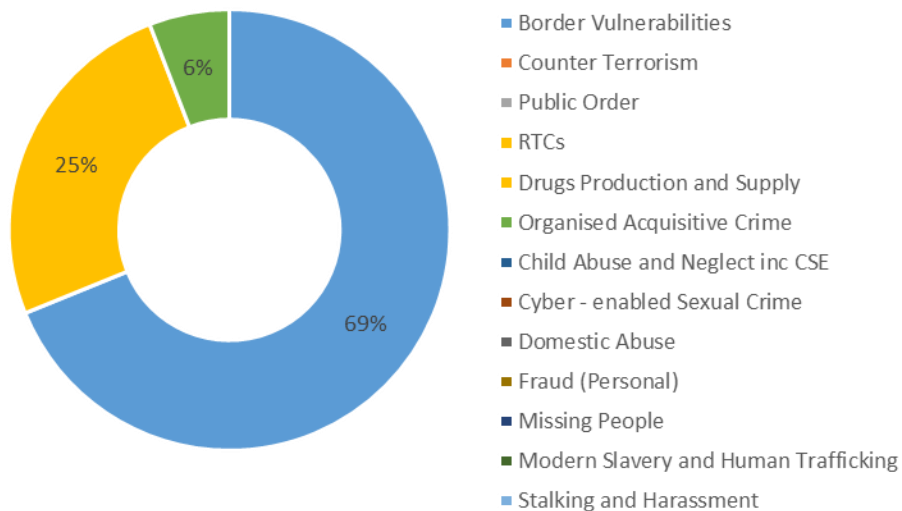
YORK SNC		Apr'18 - Feb'19	% diff Same Period '17
<b>ASB</b>	<b>7048</b>		-7.8%
<b>PSW</b>	<b>20421</b>		9.5%
Miss Person	646		-13.6%
Concern Safety	5146		1.4%
Domestic Inc	1280		-9.4%
PSW Other	13349		16.9%
<b>KSI</b>	<b>450</b>		6.4%

SELBY SNC		Apr'18 - Feb'19	% diff Same Period '17
<b>ASB</b>	<b>2195</b>		-16.2%
<b>PSW</b>	<b>7572</b>		11.5%
Miss Person	174		-17.5%
Concern Safety	1691		6.8%
Domestic Inc	576		18.5%
PSW Other	5131		13.8%
<b>KSI</b>	<b>155</b>		4.7%

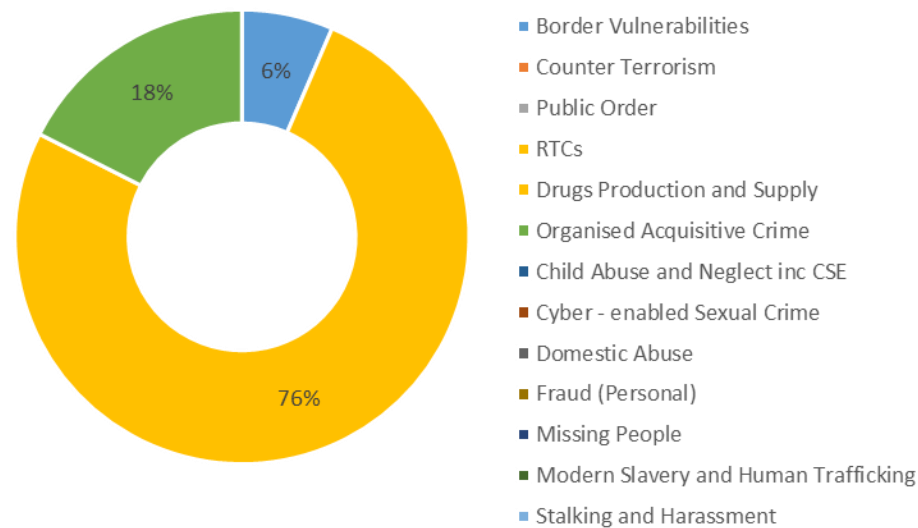
- ASB incidents continue to decrease in all SNCs
- Missing Person type incidents also show a long term decrease, in particular in the 12-18 year old age range where there has been a 13.3% reduction 2018/19 compared to 2017/18
- KSI incidents continue to fall in most areas with the exception of Craven, York and Selby. With York showing the most significant increase of 27 incidents.

# Proactivity: How has proactive policing contributed to control strategies? (Feb 19)

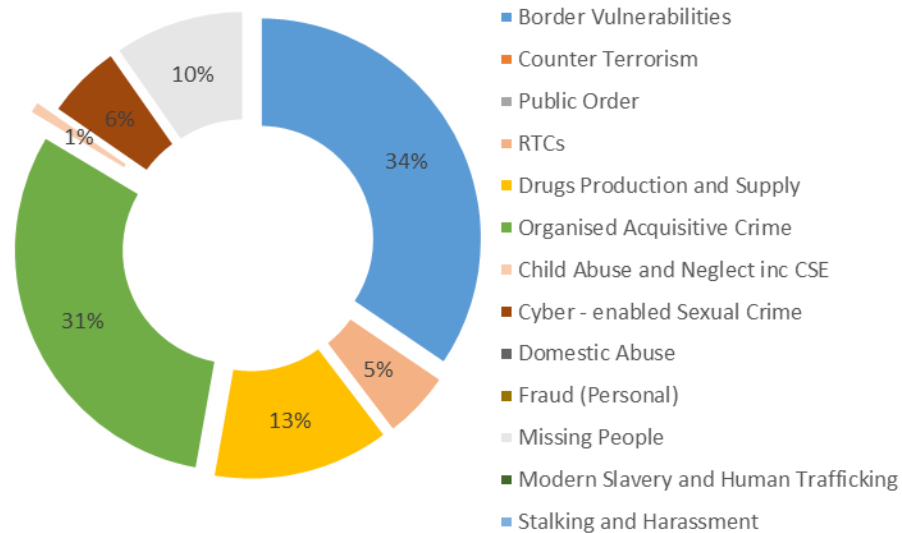
## Split of 887 hours appointed to FSU



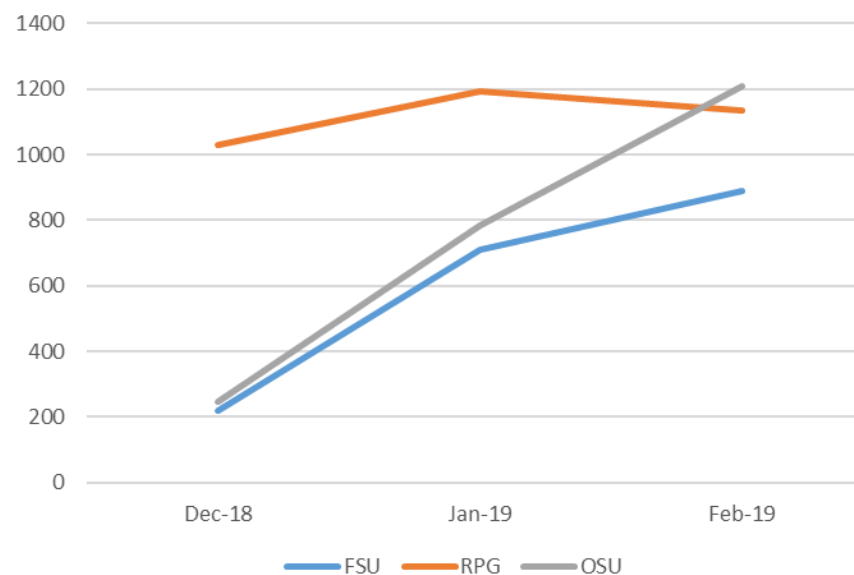
## Split of 1016 hours appointed to RPG



## Split of 1165 hours appointed to OSU

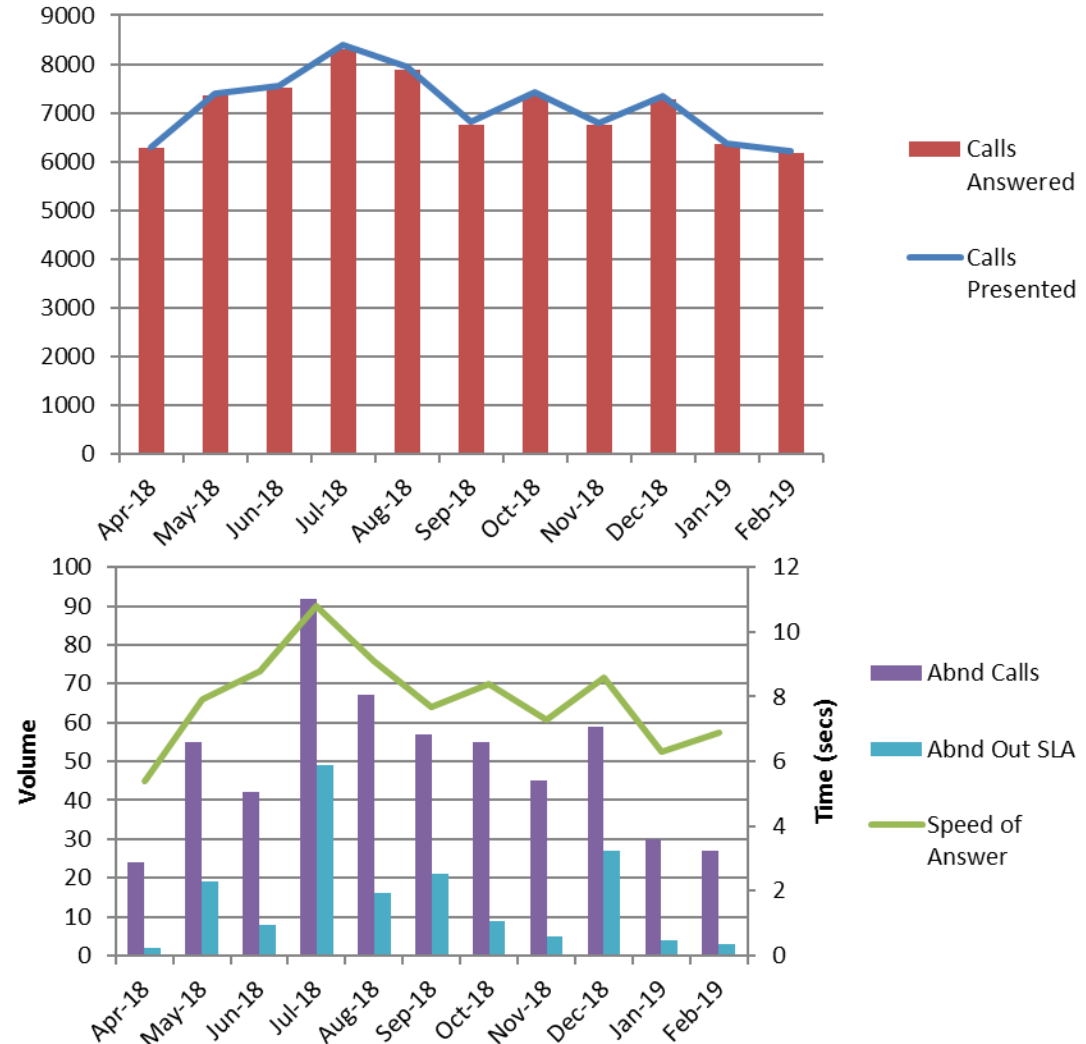


## Last 3 months Proactive Hours undertaken



## Initial Contact – 999

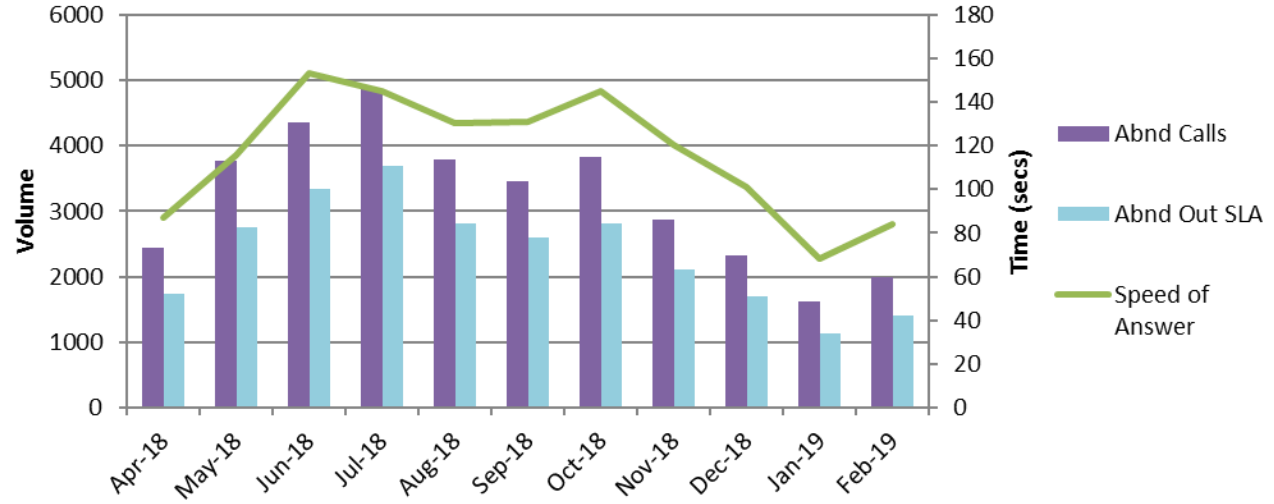
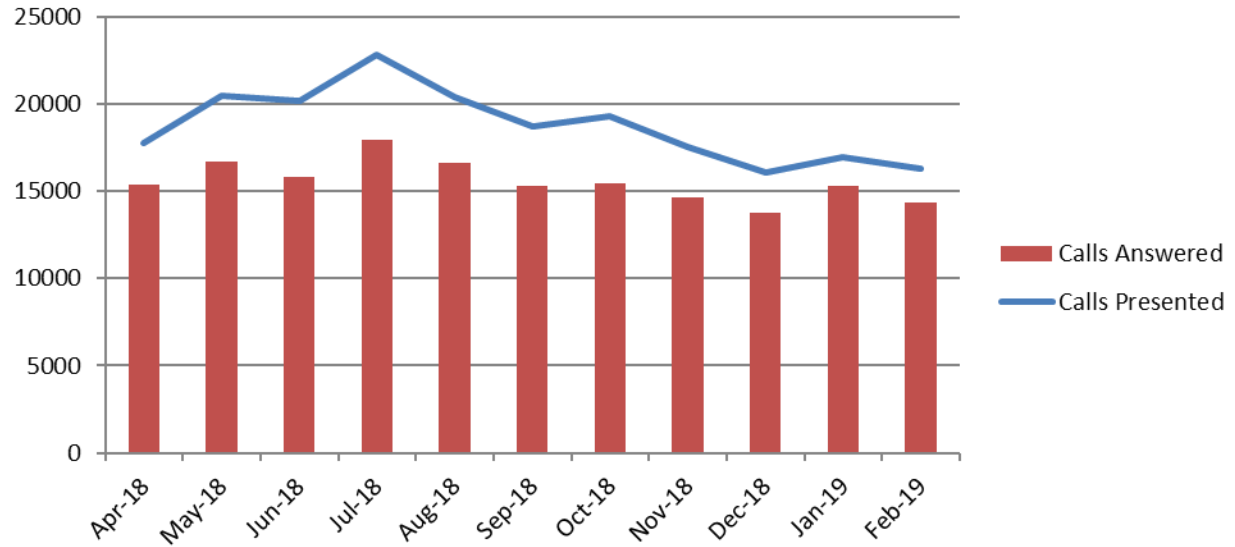
Month	Calls Presented	Calls Answered	Speed of Answer	Abnd Calls
Apr-18	6304	6280	5.4	24
May-18	7409	7354	7.9	55
Jun-18	7563	7521	8.8	42
Jul-18	8400	8308	10.8	92
Aug-18	7961	7894	9.1	67
Sep-18	6811	6754	7.7	57
Oct-18	7413	7358	8.4	55
Nov-18	6788	6743	7.3	45
Dec-18	7340	7281	8.6	59
Jan-19	6383	6353	6.3	30
Feb-19	6203	6176	6.9	27



- Highest volume of calls in any February since 2010
- There has been an increase in volume of 16.59% 2018 to 2019 and a 26.7% increase between 2017 and 2019
- Answer time consistently under 10 seconds for 7 months
- Transfers to secondary and alternate lines continue to be under national guideline of 2%

# Initial Contact - 101

Month	Calls Presented	Calls Answered	Speed of Answer	Abnd Calls
Apr-18	17782	15347	86.9	2435
May-18	20469	16697	115.5	3772
Jun-18	20153	15807	153.2	4346
Jul-18	22796	17927	145.2	4869
Aug-18	20420	16627	130.6	3793
Sep-18	18713	15266	131	3447
Oct-18	19280	15454	145.3	3826
Nov-18	17513	14653	120.3	2860
Dec-18	16061	13743	101.3	2318
Jan-19	16944	15327	68.5	1617
Feb-19	16308	14325	84.1	1983



- Abandonment rate is slightly higher in February compared to January 2019 but has reduced from 17.43% in February 2018 and 18.29% in February 2017.
- Volume is similar to February 2018.
- Call duration has consistently been over 5 minutes for 13 consecutive months

# Local Policing – Police and Crime Plan 2017-2021

Hambleton	Apr17 - Feb 18	Apr 18 - Feb 19	Diff
Burglary	268	351	31.0%
Road	5057	4539	-10.2%
Mental Health	1057	1334	26.2%

Scarborough	Apr17 - Feb 18	Apr 18 - Feb 19	Diff
Burglary	445	548	23.1%
Drug Offences	288	347	20.5%
ASB	5628	5245	-6.8%

Richmondshire	Apr17 - Feb 18	Apr 18 - Feb 19	Diff
Drug Offences	45	23	-48.9%
Burglary	167	117	-29.9%
ASB	1269	853	-32.6%

Ryedale	Apr17 - Feb 18	Apr 18 - Feb 19	Diff
Burglary	132	154	16.7%
Drug Offences	51	69	35.3%
ASB	1089	912	-16.3%
Road	3190	2769	-13.2%

Harrogate	Apr17 - Feb 18	Apr 18 - Feb 19	Diff
Burglary	636	830	30.5%
ASB	4798	3989	-16.9%
Road	7380	7531	2.0%
Cyber	109	139	27.5%

York	Apr17 - Feb 18	Apr 18 - Feb 19	Diff
Violence	2933	3916	33.5%
Burglary	918	930	1.3%
ASB	7613	7048	-7.4%
Cyber	112	207	84.8%

Craven	Apr17 - Feb 18	Apr 18 - Feb 19	Diff
Burglary	207	282	36.2%
Road	2277	2015	-11.5%
Crime	1595	1904	19.4%

Selby	Apr17 - Feb 18	Apr 18 - Feb 19	Diff
Drugs	119	132	10.9%
Burglary	534	414	-22.5%
ASB	2620	2195	-16.2%
Cyber	46	95	106.5%

# GLOSSARY

## Glossary

- ASB = Anti-Social Behaviour
- CMS = Community Messaging System
- Concern Safety = Concern for Safety – includes all occurrences where there is a concern for an individual's safety or welfare
- Fraud Offences = These are not included in the crime statistics as they are not reported by forces to the Home Office. Instead these crimes are passed to Action Fraud and statistics are collated by that agency
- FSU = Firearms Support Unit
- I Grade = priority assigned by control room for an incident requiring ImmEDIATE police response
- KSI = A casualty Killed or Seriously Injured as a result of a Road Traffic Collision on a public road
- MCU = Major Crime Unit
- Miss Pers = Missing Person
- MO = Modus Operandi
- NPS = New PsychoaSive Substances is the official term for Legal Highs
- NTE = Night Time Economy
- OCG = Organised Crime Group
- OSU = Operational Support Unit – a specialist unit which is deployed around the force through tactical bidding process
- OPL = Over Prescribed Limit typically the term used to describe failing a breath test
- PCSO = Police Community Support Officer
- PSW = Personal Safety and Welfare
- Resolved Outcome = A crime where an offender has been dealt with through sanction or restorative justice.
- RPG = Roads Policing Team
- RTF = Rural Task Force
- SNC = Safer Neighbourhood Command – Area of Policing attributed to
- Sus Circs = Suspicious Circumstances – includes Insecure premises and Vehicles
- TIC = Taken Into Consideration is typically where an offender admits to further offences to avoid potentially being pursued for these at a later date.

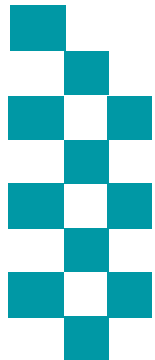
# Public Accountability Board

Part b) People



Reporting Period: As at end of February 2019

NB: Statistics remain provisional and subject to change



**BE SAFE**  
**FEEL SAFE**

# HR OVERVIEW

## Police Officers

	Apr 18	May 18	Jun 18	Jul 18	Aug 18	Sep 18	Oct 18	Nov 18	Dec 18	Jan 19	Feb 19	Mar 19	Mar 20
<b>Officer Long Term FTE Target</b>	1,400.0	1,400.0	1,400.0	1,400.0	1,400.0	1,400.0	1,400.0	1,400.0	1,400.0	1,400.0	1,400.0	1,400.0	1,400.0
<b>Officer FTE Budget for the month after vacancy factor</b>	1,364.00	1,359.5	1,355.5	1,370.5	1,389.5	1,380.5	1,373.5	1,367.5	1,391.5	1,386.5	1,401.5	1,395.5	1,394.5
<b>Actual/ Projected Officer Numbers (includes recruitment)</b>	1347.31	1342.22	1338.10	1340.70	1,359.45	1,350.16	1356.80	1349.96	1347.01	1341.26	1365.80	1357.01	1,393.81

The above figures have been amended to include the Officer FTE Budget for the month after vacancy factor and also what the projected numbers are for the rest of the financial year (figures in shaded boxes).

The actual number of Officers has decreased by 8.79 FTE from the previous month. The 9 leavers are broken down as 4 retirements, 4 resignations and 1 officer transfer to another force. The number of leavers was the same as the leaver projections.

The next intake of Student Officers and Transferees is planned for March 2019, with further intakes being planned in order to meet the target figure of 1400.

## PCSO

	Apr 18	May 18	Jun 18	Jul 18	Aug 18	Sep 18	Oct 18	Nov 18	Dec 18	Jan 19	Feb 19	Mar 19	Mar 20
<b>PCSO Long Term FTE Target</b>	200.0	200.0	200.0	200.0	200.0	200.0	200.0	200.0	200.0	200.0	200.0	200.0	200.00
<b>PCSO FTE Budget for the month after vacancy factor</b>	214.00	200.00	200.00	200.00	200.00	200.00	200.00	200.00	200.00	200.00	200.00	200.00	200.00
<b>Actual/ Projected PCSO Numbers (includes recruitment)</b>	195.36	208.51	206.52	206.43	202.07	201.05	196.11	194.95	194.95	193.95	187.01	185.26	186.02

The actual number of PCSOs has decreased by 1.75 FTE from the previous month. 1 PCSO resigned.

The next intake of PCSOs is scheduled for June 2019.



# HR OVERVIEW

## Staff

BUDGET:	Apr 18	May 18	Jun 18	Jul 18	Aug 18	Sep 18	Oct 18	Nov 18	Dec 18	Jan 19	Feb 19	Mar 19	Mar 20
OPCC	13.0	13.0	13.0	13.0	13.0	13.0	13.0	13.0	13.0	13.0	13.0	13.0	11.0
Project Staff (incl Agency)	20.0	20.0	20.0	20.0	20.0	20.0	20.0	20.0	20.0	20.0	20.0	20.0	3.0
Commissioned Services	13.8	13.8	13.8	13.8	13.8	13.8	13.8	13.8	13.8	13.8	13.8	13.8	11.8
Corporate Services	192.1	192.1	192.1	192.1	192.1	192.1	192.1	192.1	192.1	192.1	192.1	192.1	202.8
Chief Constable	889.4	889.4	889.4	889.4	889.4	889.4	889.4	889.4	889.4	889.4	889.4	889.4	920.8
Total Staff FTE Budget for the month (after vacancy factor)	1128.0	1128.0	1128.0	1128.0	1128.0	1128.0	1128.0	1128.0	1128.0	1128.0	1128.0	1128.0	1149.5
ACTUAL:													
OPCC	10.75	10.74	10.74	10.74	9.24	8.24	10.24	10.10	10.10	10.10	12.11	12.10	12.10
Project Staff (incl Agency)	40.55	37.19	31.41	32.41	9.00	7.00	7.00	7.00	8.00	7.00	6.14	6.14	6.14
Commissioned Services	10.43	11.24	12.24	12.24	11.74	12.24	12.24	12.24	12.44	13.44	13.45	14.44	13.44
Corporate Services	194.33	201.8	197.51	195.58	194.58	195.58	191.58	190.58	188.44	187.47	189.47	188.58	190.47
Chief Constable	904.04	911.14	909.43	902.94	892.18	890.25	877.19	871.23	884.92	881.50	879.18	881.49	879.20
Total Staff against budget FTE	1160.10	1172.11	1161.35	1,153.91	1116.74	1113.31	1098.25	1091.15	1103.90	1099.51	1100.35	1102.75	1,101.37
Permanent Staff FTE	1054.59	1066.91	1062.60	1056.59	1048.01	1045.50	1035.43	1033.58	1044.29	1041.39	1038.60	1035.00	1046.80
Temporary Staff FTE (not including agency)	79.39	74.21	69.76	69.76	52.16	51.24	46.24	39.99	48.04	47.54	52.16	57.16	44.99
Agency Staff FTE	26.12	30.99	28.99	27.58	16.58	16.58	16.58	17.58	11.58	10.58	9.58	7.58	9.58
Total Staff against budget FTE	1160.10	1172.11	1161.35	1153.93	1116.75	1,113.32	1098.25	1091.15	1103.91	1099.51	1100.34	1102.74	1,101.37

The Staff Budget has been adjusted for 2018/ 2019. The budget is managed on a monthly basis depending upon business requirements and therefore is likely to change during the financial year.

The projections remain static as the majority of current recruitment is internal; therefore we are unlikely to see a significant increase in staff numbers over all.

OPCC figures do not include the PCC, DPCC or Fraser Sampson

The total number of actual Staff has increased by 2.4 FTE from the previous month.

2 x agency staffs are in supernumerary posts.

5.58 x agency staff are backfill or interim postings against established posts (includes part time agency staff).

# HR OVERVIEW

	Apr 18	May 18	Jun 18	Jul 18	Aug 18	Sep 18	Oct 18	Nov 18	Dec 18	Jan 19	Feb 19	Mar 19	Mar 20
<b>Total Budget of all Officers, PCSO and Staff</b>	2682.2	2631.7	2627.7	2698.5	2717.5	2708.5	2701.5	2695.5	2719.5	2714.5	2729.5	2723.5	2722.5
<b>Total Actual Number of all Officers, PCSO and Staff</b>	2676.65	2721.82	2705.98	2701.06	2678.26	2664.53	2651.16	2636.06	2645.87	2634.72	2653.16	2637.44	2681.2

## Citizens in Policing

	Apr 18	May 18	Jun 18	Jul 18	Aug 18	Sep 18	Oct 18	Nov 18	Dec 18	Jan 19	Feb 19	Mar 19
<b>Actual Specials FTE</b>	130.00	142.00	137.00	131.00	131.00	130.00	127.00	141.00	141.00	130.00	117.00	117.00
<b>Actual Volunteers (including Police Cadets)</b>	266.00	268.00	246.00	240.00	265.00	290.00	289.00	289.00	318.00	325.00	325.00	325.00

The actual number of Special Constables has remained the same as the previous month.

We currently have 331 volunteers in the following roles;

- Volunteer Advisors
- Front Counter Support
- Safer Neighbourhood Support
- Rural Watch Patrol
- Tape and information facilitator
- Police Cadets
- Police Cadet Leaders
- PSV Driver
- Neighbourhood Support Volunteer
- Vehicle Checker

# NYP'S TACTICAL RESPONSE

## ***Rural Crime Task Force (RTF)***

### ***Caring for the Vulnerable***

Work ongoing with Victim Support to increase referrals from rural victims of crime.

Collaboration with NHS, Farming Community Network, Yorkshire Agricultural Society and others to improve relevant signposting to mental health services.

Op Woollen, Op Woodchip and Op Crucible aim to provide proactive prevention advice to farms, businesses and historic assets at risk.

Property Marking Events are regularly held to provide reassurance and a deterrent against theft.

### ***Ambitious Collaboration***

Future Op Checkpoint days of action scheduled in with neighbouring forces.

Regional Enforcement Groups chaired to share working practices and intelligence with neighbouring forces.

Op Owl dates planned for later in the year tackling raptor persecution with partners and land owners.

Op Owl being adopted as national operation, and briefing on this taking place to other forces across next months.

RSPCA Inspector now a Volunteer within NYP to act as Wildlife Crime Critical Friend.

Op Eyeball dates planned through the year to work with local authorities and other departments to tackle fly-tipping and associated offences.

Work continues with a number of other agencies (North York Moors PA, Yorkshire Dales PA, Nidderdale and Howardian Hills AONB, Young Farmers, Askham Bryan) to broaden the understanding of rural crime in rural communities, and improve reporting.

Attendance at National CPS meeting to improve understanding and context of rural / wildlife crime, and improve prosecutions.

### ***Reinforcing Local Policing***

Proactive enforcement operations taking place in response to local issues highlighted including recently Op Light in Craven and Op Dusk in Selby.

Op Sidekick is an intelligence led operation to proactively tackle plant and machinery theft through a series of tactics, and continues.

Op Extractor investigation and proactive response to a series of burglaries and thefts in the north of the county, as well as OCG management

Op Existence investigation into livestock theft and subsequent sale, OCG management and working with partners such as NFCU to tackle OCG.

Op Galileo has reduced the number of poaching incidents within the force, and will continue into early April.

Op Byway works with landowners and national parks to tackle problem of off road bikes causing damage to key areas.

### ***Enhancing Customer Experience***

Op Harvester works with volunteers based in community groups to actively work with local officers to tackle rural criminality in their areas. There are now sixteen across North Yorkshire comprising 200+ PSV's.

WhatsApp has recently been piloted as a tool to improve communication between community groups and the police. This has been successful in one area, and is being rolled out into 2 others.

The programme of attending local shows and other events will be taking place through the summer months to ensure communication with and understanding of rural communities and their issues.