



**NORTH YORKSHIRE
FIRE & RESCUE SERVICE**

Public Accountability Meeting

Major Incident Preparedness and
National Resilience

30th April 2019

Area Manager Stuart Simpson
Group Manager Phil Whild

Community Risks



**NORTH YORKSHIRE
FIRE & RESCUE SERVICE**

National Risk Register (NRR)

An assessment of the likelihood and potential impact of a range of different civil emergency risks (including naturally and accidentally occurring hazards and malicious threats) that may directly affect the UK

Community Risk Register (CRR)

Within North Yorkshire the Local Resilience Forum (LRF) undertakes a review of those risks facing the county. A 'Community Risk Register' has been developed that highlights potential hazards in our area, e.g.

- Fire
- Severe weather
- Flooding
- Pandemic influenza
- Industrial incident
- Utility failure
- Others...



North Yorkshire Local Resilience Forum (NYLRF)



**NORTH YORKSHIRE
FIRE & RESCUE SERVICE**

NYLRF is a non statutory body with mandatory requirements under the Civil Contingencies Act (CCA) 2004

Consists of:

Category 1 organisations e.g. emergency services, local authorities, NHS bodies

Category 2 organisations e.g. HSE, telecommunications, transport and utility companies

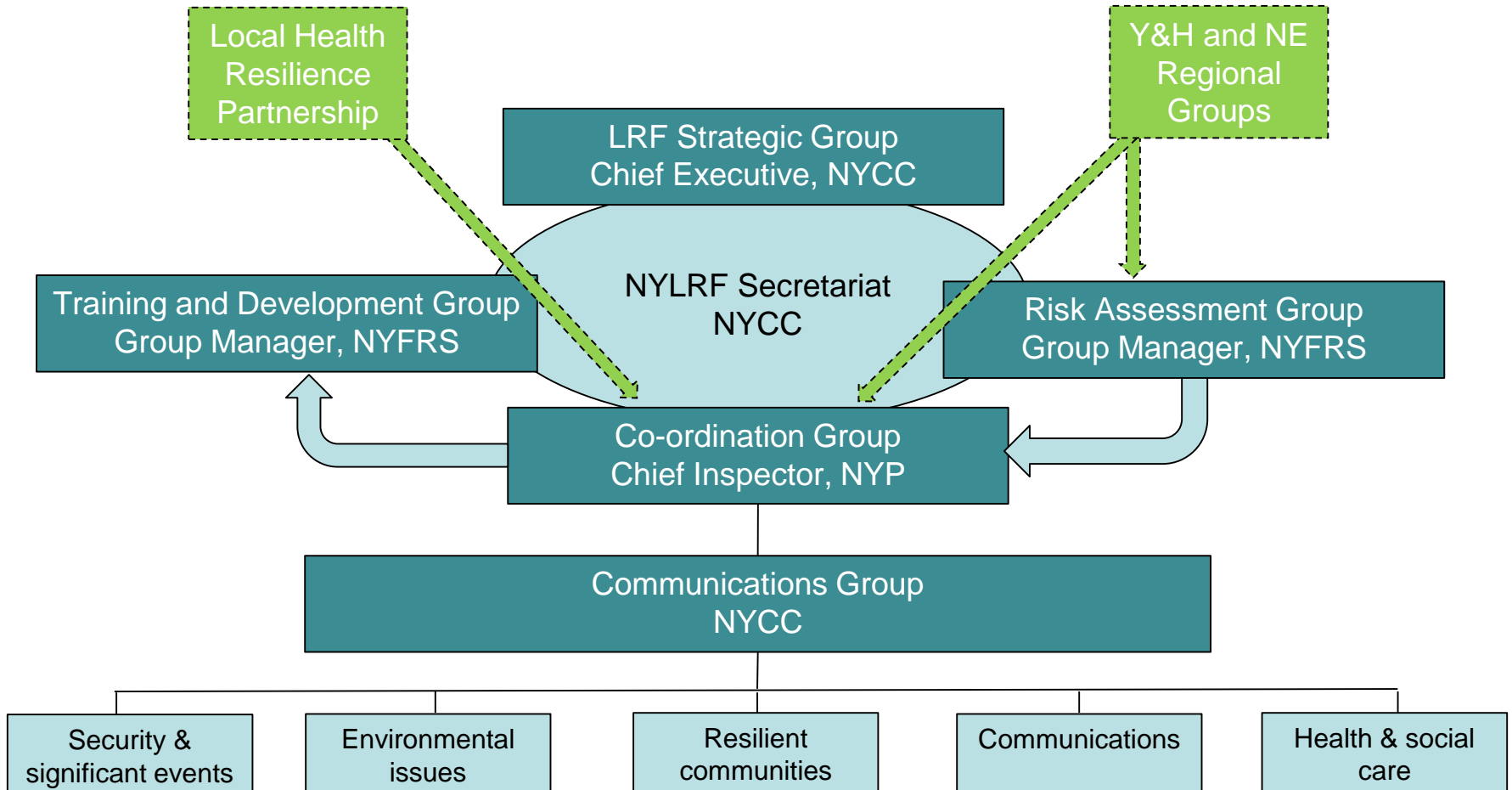


Category 1 and 2 organisations come together to form local resilience forums. Key to an LRF's work is to assess risk, prepare plans, train and exercise together, and warn and inform the public. This helps co-ordination and co-operation between responders at the local level in the event of an incident

NYLRF Structure



**NORTH YORKSHIRE
FIRE & RESCUE SERVICE**



Response to Major and Critical Incidents (RMCI)



**NORTH YORKSHIRE
FIRE & RESCUE SERVICE**

- Major Incident – An event or situation, with a range of serious consequences, which requires special arrangements to be implemented by one or more emergency responder agencies (JESIP Doctrine, 2016)
- Critical Incident – Any incident where the effectiveness of the police response is likely to have significant impact on the confidence of the victim, their family; and/or the community (MPS, 2006)

RMCI

- RMCI protocol for information sharing and escalation process
- A consistent multi-agency approach to response, a common reporting structure, and a joint approach to information management, to achieve a shared situational awareness across North Yorkshire and the City of York
- Advisory, Tactical, Strategic and Recovery Co-ordination Groups
- Quick time communications 24/7/365
- Resilience Direct website – government run website to securely store documentation for local resilience

Joint Emergency Services Interoperability Programme (JESIP)



**NORTH YORKSHIRE
FIRE & RESCUE SERVICE**

Co-locate

Communicate

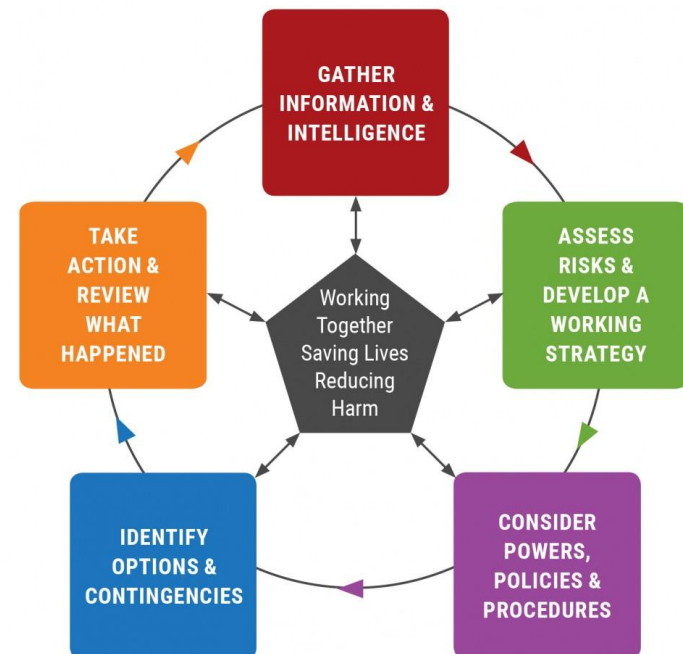
Co-ordinate

Joint
understanding
of risk

Shared
situational
awareness

Major incident declared
Exact location
Type of incident
Hazards present or suspected
Access – routes safe to use
Number, type, severity of casualties
Emergency services present and those required

Joint Decision Making Process:



Service Resources



**NORTH YORKSHIRE
FIRE & RESCUE SERVICE**

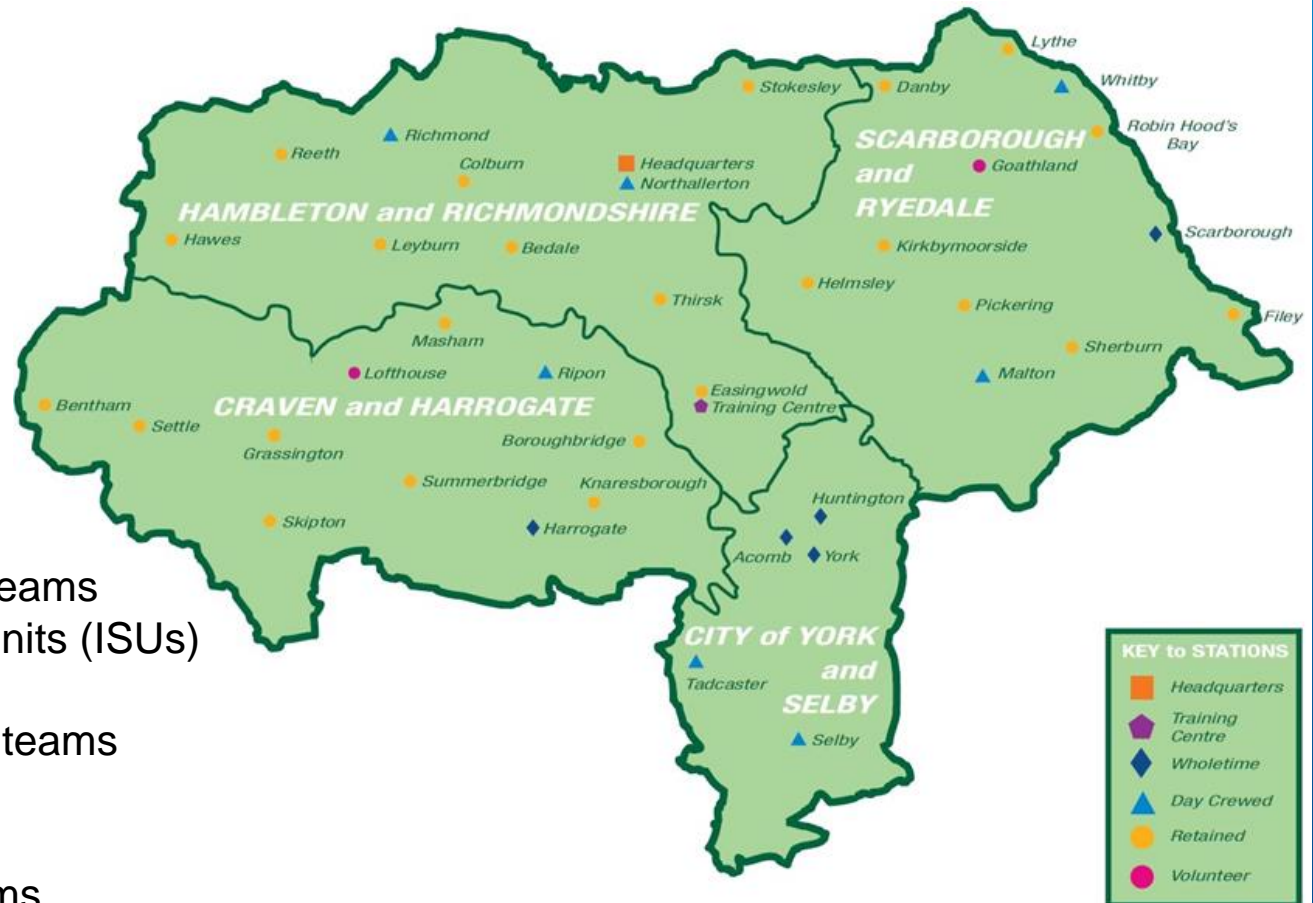
38 fire stations

46 fire engines:

- 36 standard type
- 4 4x4s
- 6 Tactical Response Vehicles

Specialist units:

- Incident Command Unit (ICU)
- 3 Aerial Ladder Platforms (ALPs)
- 3 working at height teams
- 3 Incident Support Units (ISUs)
- 2 boat units
- 5 swift water rescue teams
- 2 wildfire units
- 2 water bowsers
- 3 animal rescue teams



4 National Resilience Assets

National Resilience Assets



**NORTH YORKSHIRE
FIRE & RESCUE SERVICE**

Provided by Government as part of a national strategy

Strategically placed across the country in regions, determined from National Risk Register outcomes, to provide an even balance of capability to support national mutual aid assistance

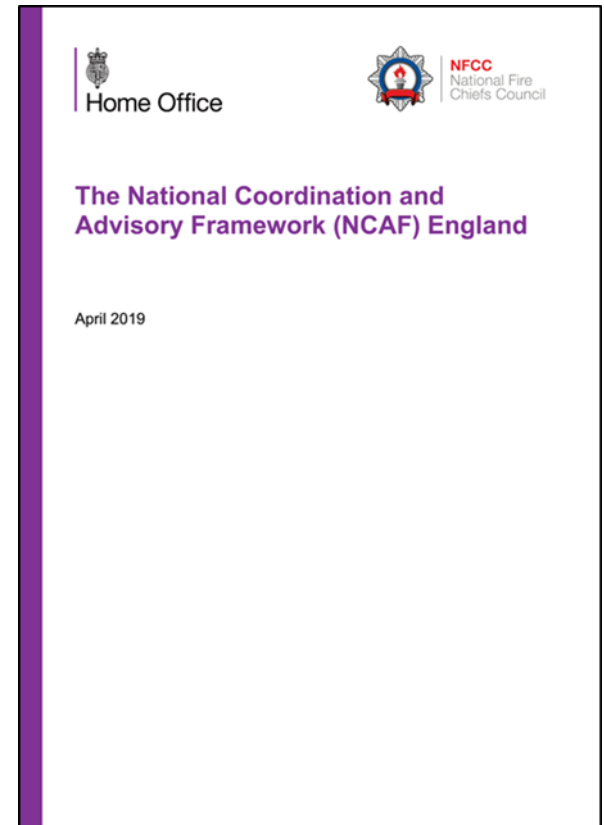
National Coordination and Advisory Framework (NCAF)

Capabilities:

- High Volume Pumps (HVP)
- Urban Search and Rescue (USAR)
- CBRN(E) including Mass Decontamination; and Detection, Identification and Monitoring (DIM)
- Enhanced Logistics Support
- Water Rescue, Marauding Terrorist Attack, conventional and other appliances, bulk foam

- The Service hosts 2 HVPs, a Mass Decontamination Unit and a Type B Flood Rescue Unit

- All assets are available for a national deployment but are also used within the county



National Resilience Assets Hosted by the Service



**NORTH YORKSHIRE
FIRE & RESCUE SERVICE**

High Volume Pumps

- Located at Richmond and Harrogate
- Two prime movers, one module each
- One carries the pump and 1km of hose, the other is a hose layer with 2km of hose
- Pumps 7,000 litres/minute, firefighting operations and flood relief.



Mass Decontamination Unit

- Located at Acomb
- Public Decontamination Structure, Firefighter Decontamination Structure and 270 disrobe and re-robe packs
- Set up takes around 30-45 minutes and can decontaminate 150 people per hour



Type B Flood Rescue Unit

- Located at Selby
- Power boat with a crew of 6 Water Rescue Technicians



National Resilience Assets Training



**NORTH YORKSHIRE
FIRE & RESCUE SERVICE**

- National Resilience Assurance Team (NRAT)
 - HVP and MDU on a continuous 3 yearly cycle: self assessment; national exercise (testing phase); NRAT assurance visit
- DEFRA Assurance
 - Type B Flood Rescue Unit on a 2 yearly cycle as above excluding national exercise
- Internal training and exercising
 - Station based training delivered by operators/instructors
 - Initial acquisition; maintenance of competency; theme training; one regional exercise per year
 - All firefighters at each location



**NORTH YORKSHIRE
FIRE & RESCUE SERVICE**

Cross Border Resources

Fire and Rescue Services Act 2004

- Section 13 – Reinforcement Schemes:
 - A reinforcement scheme is a scheme for securing mutual assistance between fire and rescue authorities
- Section 16 – Arrangements for discharge of functions by others:
 - ‘Ceded’ responsibilities whereby a neighbouring fire service will deploy its resources into the county due to their proximity to certain areas

Risk Information

- Shared within a 10 kilometre band along each border

Requesting Resources - Neighbouring and National



**NORTH YORKSHIRE
FIRE & RESCUE SERVICE**

Neighbouring resources

Mobilising system proposes closest resource

Manual request to neighbouring Fire Control(s)

National Assets

Manual request to National Resilience Fire Control (NRFC) hosted in Merseyside Fire and Rescue Service

Military Aid to the Civil Authorities (MACA)

All requests for military help by civil authorities are made through the MOD Operations Directorate and will require specific ministerial approval

Local Resilience



**NORTH YORKSHIRE
FIRE & RESCUE SERVICE**

Spate Conditions

Three levels:

- Level 1 – Warning
- Level 2 – Spate conditions in operation
- Level 3 – Stand-down

Bronze Command Hubs ease pressure on Control and allows local mobilisation

Additional resilience through collaboration with Cornwall Fire and Rescue Service - able to answer 999 calls, create an incident and mobilise resources



**NORTH YORKSHIRE
FIRE & RESCUE SERVICE**

It will never happen...

2015 flooding

Resources deployed over a five day period:

- 535 emergency calls received (24 hour period)
- 52 standard appliances deployed (Mod 2 TWR)
- 5 Swift Water Rescue Teams deployed (NYFRS)
- 39 national resources utilised
- 2 NRAT Liaison Officers 24/7
- 2 Flood Tactical Advisors 24/7
- 2 Enhanced Logistical Support Teams at Strategic Holding Area (on rotation)
- 10 Type B Water Rescue Units (power boats)



continued...

- 1 additional Water Rescue Unit maintained for river rescue (located at York)
- 5 High Volume Pumps
- 10 Mountain Rescue Team (MRT) boats (co-ordinated at the NYCC Emergency Planning holding area)
- 150 MRT staff with technical water rescue capability
- 2 Hazardous Area Response Teams (HART)
- Rest centres established by NYCC Emergency Planning
- 1500 troops on the ground
- 1 Chinook helicopter



**NORTH YORKSHIRE
FIRE & RESCUE SERVICE**

Questions?