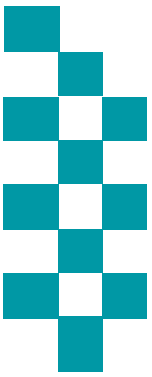


# Public Accountability Board



Meeting Date: 30<sup>th</sup> April 2019 13:30



**BE SAFE**  
**FEEL SAFE**

# Agenda



## Caring About the Vulnerable

Mental Health

S136 Detentions



## Ambitious Collaboration



## Reinforcing Local Policing

City Command

Coastal Command

County Command

Crime Trends

ASB/PSW  
Incidents

Proactive Policing



## Enhancing the Customer Experience

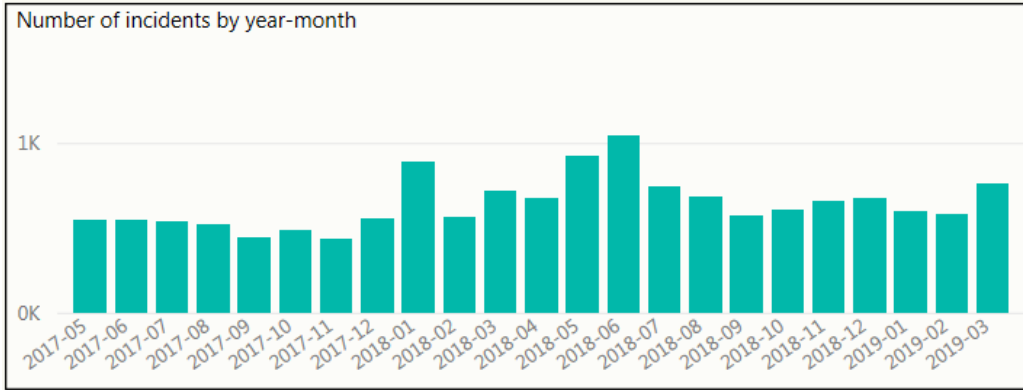
999

101

Local Priorities

# Mental Health

## Occurrences involving a person(s) with a mental health qualifier



- The monthly volume of incidents where Mental Health is seen as a factor involved remains static with the exception of January 2018 and Summer 2018 where we saw a rise in incidents.
- Incidents with a Mental Health tag have accounted for 8.33% of all incidents in the last 22 months

## Incidents with highest number of Mental Health Tag (Apr '18 – Mar '19)

Description	Volume with mental health tag	% of All Type of Incidents
CONC SAFETY/TRAPPED/INJ/ILL	5134	40.21%
MISSING PERSON	457	26.36%
DOMESTIC INCIDENT	579	11.11%
VIOLENCE	629	8.04%
ASB NUISANCE	560	5.51%

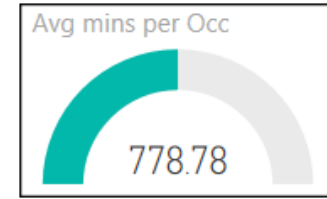
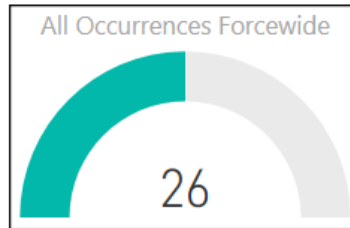
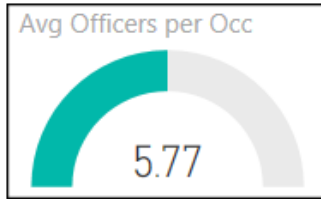
Incident data (left) relates to the initial police response where Mental health presented and was tagged on the incident

## Use of police custody as a place of safety

Police custody must only be used for s.136 MHA detainees in highly exceptional circumstances, e.g. genuinely unmanageable risks of resistance, aggression, violence or escape, or if also detained for an offence. We scrutinise every use of custody in these circumstances. Further details are included on the following slide.

136 Detentions (Police Custody)	Apr-18	May-18	Jun-18	Jul-18	Aug-18	Sep-18	Oct-18	Nov-18	Dec-18	Jan-19	Feb-19	Mar-19
Under 18	0	0	0	0	0	0	0	0	0	0	0	0
Aged 18 or Over	1	1	5	3	1	2	0	1	4	2	2	3
<b>Total</b>	<b>1</b>	<b>1</b>	<b>5</b>	<b>3</b>	<b>1</b>	<b>2</b>	<b>0</b>	<b>1</b>	<b>4</b>	<b>2</b>	<b>2</b>	<b>3</b>

# s136 – March 2019



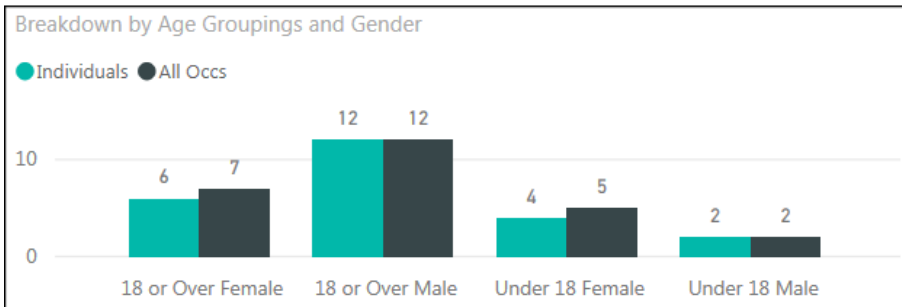
## By Occurrence Type

Closing Code Desc      Occs

Closing Code Desc	Occs
CONC SAFETY/TRAPPED/INJ/ILL	18
VIOLENCE	3
POLICE GENERATED ACTIVITY	2
MISSING PERSON	1
NUISANCE	1
<b>Total</b>	<b>25</b>

- March 2019 saw a decrease in s136 detentions when compared to the monthly average experienced (average 30 incidents per month)
- Due to the closure of the HBPoS at Northallerton 2 detainees were taken out of area to a HBPoS in Darlington. These 2 incidents averaged 948.6 mins, so an additional 2.5 hours was required for each of these occurrences compared to other suites.
- 2 individuals had repeat s136 detentions in March 2019.
- 10 incidents required Police transportation:
  - 5 following Risk assessment
  - 2 due to no Ambulance being available within 30 mins
  - 1 due to an Ambulance being re-tasked for a higher priority
  - 2 no reason recorded

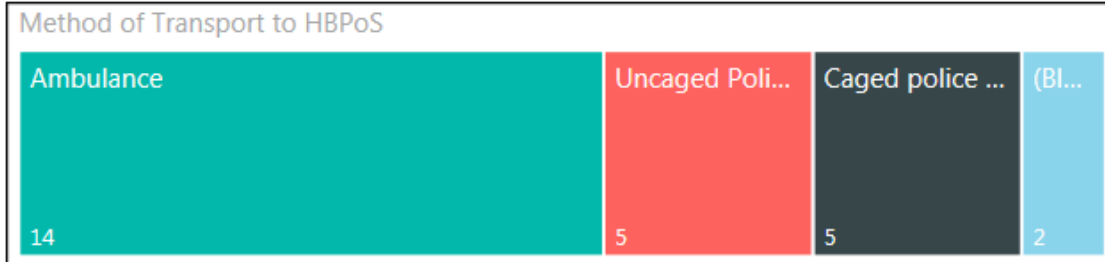
## Gender/Age Breakdown and Repeat Nominals



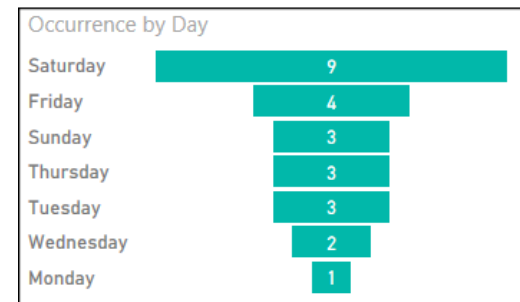
## Outcomes

Outcome	Distinct Occs
Formal Admission	8
Not open to services. Returned to the community without follow up	8
Open to services, returned to the community with follow up by current service	5
Not open to services Returned to community with follow up	3
Informal Admission	2

## Mode of Transport

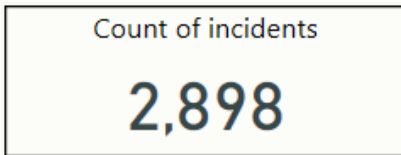


## Occurrence by Day

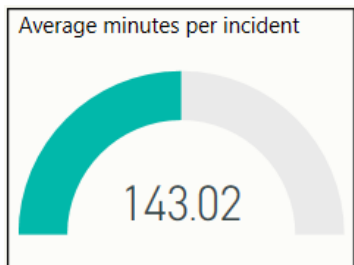
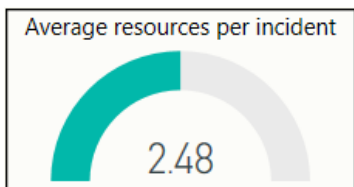


# City Command (Incidents and Crimes Committed March 2019 – York and Selby)

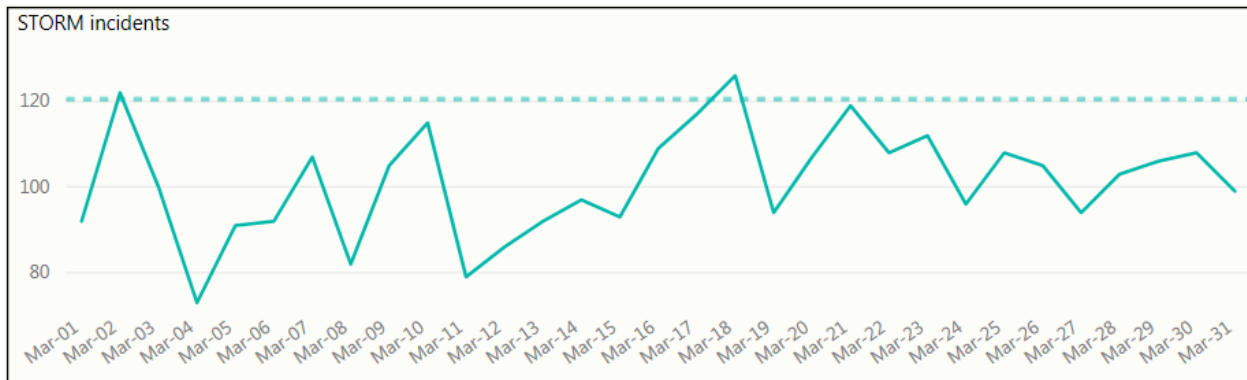
## Count of all Incidents and type



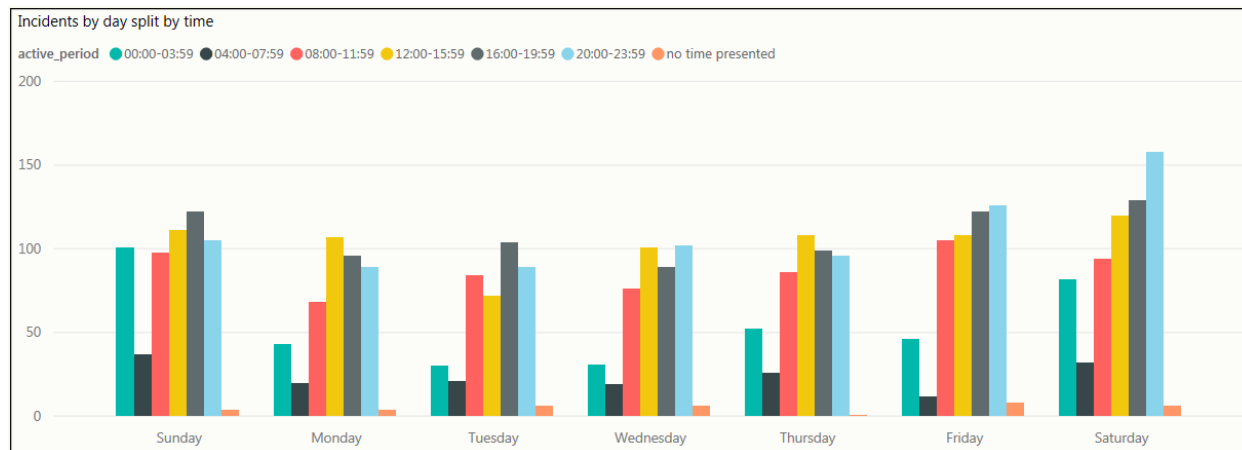
## Average Officers and Time Spent



## Incident Volumes by Date



## Incident Volumes by Day and Time Group



## Highest Wards by Crime Volume

Guildhall Inner (NYP)	Micklegate Outer (NYP)	Huntington and New E...	Clifton	Micklegate I...	Hull Road (...)
234	96	90	74	57	51
	Westfield	Heworth	Selby South	Fishergate	Skelton, Ra...
	91	84	70	52	47

# Coastal Command (Incidents and Crimes Committed March 2019 – Scarborough and Ryedale)

## Count of all Incidents and type

Count of incidents

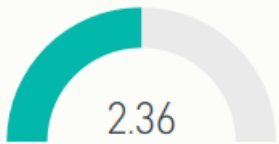
1,886

Total Crimes Committed

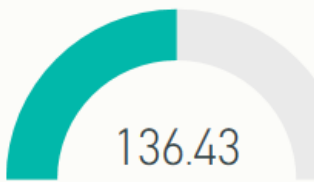
998

## Average Officers and Time Spent

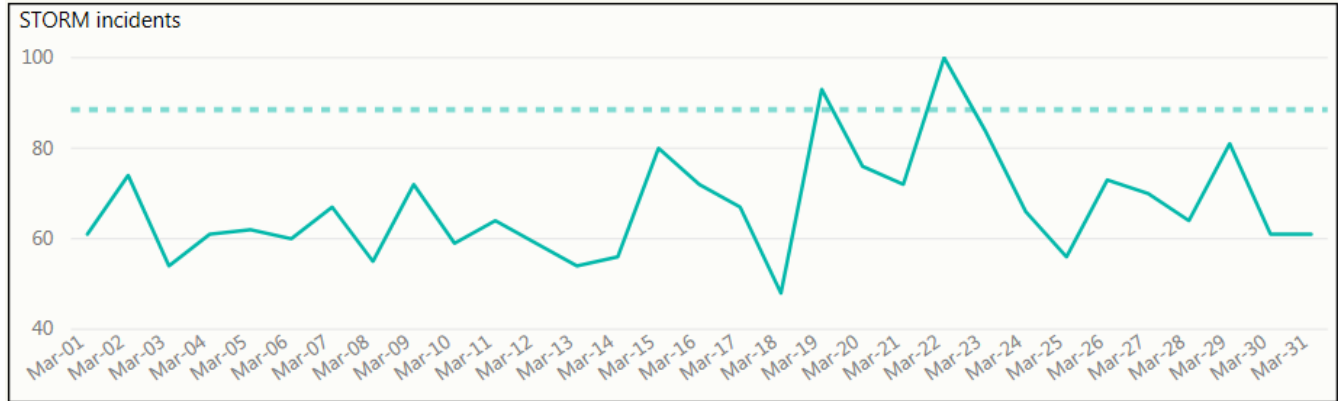
Average resources per incident



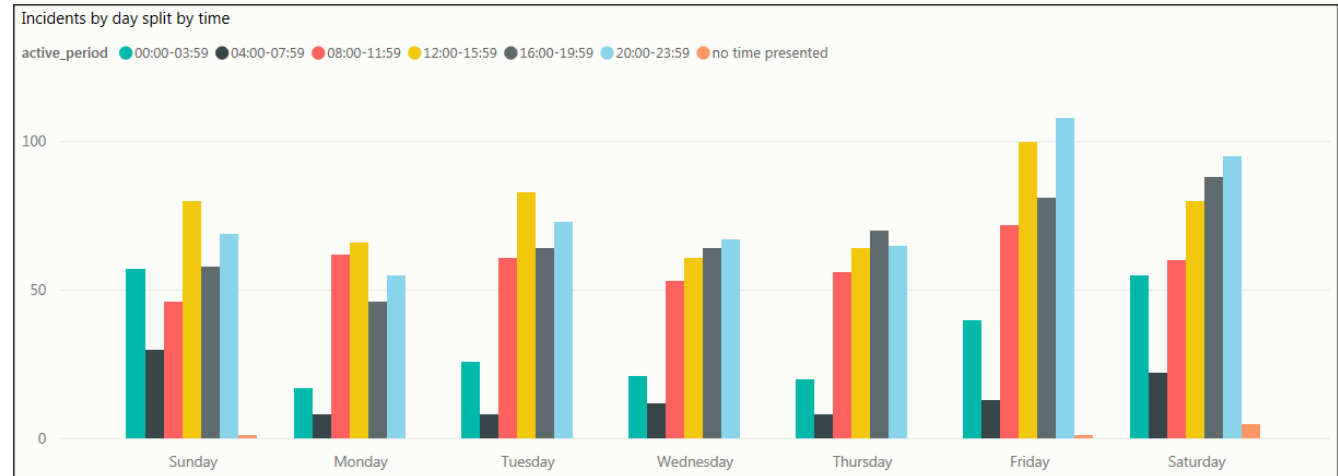
Average minutes per incident



## Incident Volumes by Date



## Incident Volumes by Day and Time Group

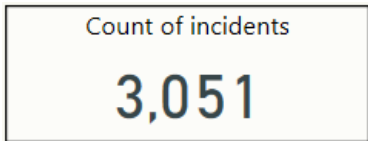


## Highest Wards by Crime Volume

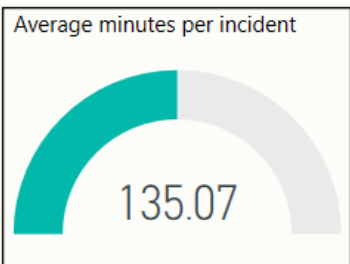
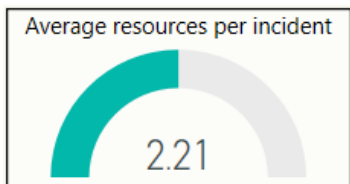
Castle	Central	Eastfield	Falsgrave Park	Malton	Hertford	Stepney
227	62	52	38	35	31	28
	North Bay	Ramshill	Whitby West ...	Woodlands	Streonshalh	Newby
	52	49	36	32	30	26

# County Command (Incidents and Crimes Committed March 2019 – Hamb, Rich, H'gate and Craven)

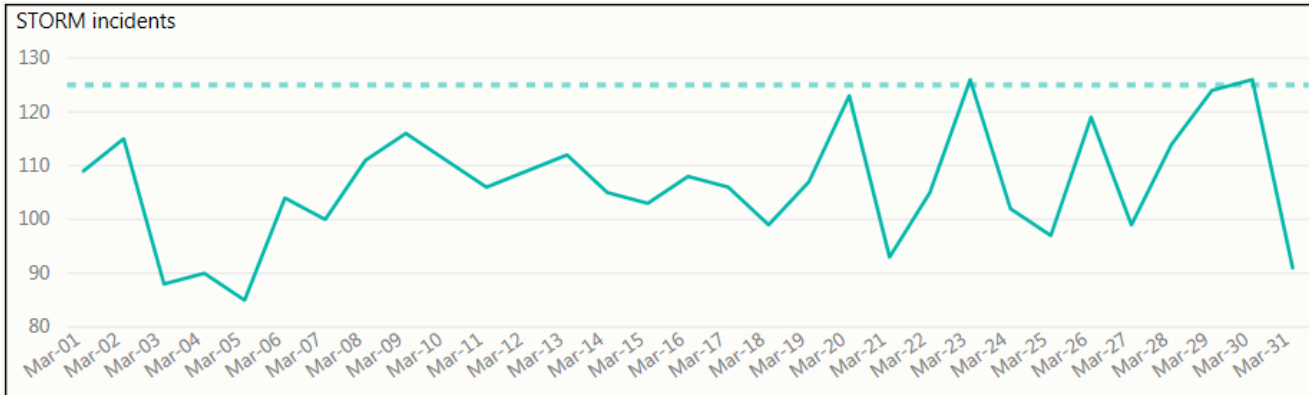
## Count of all Incidents and type



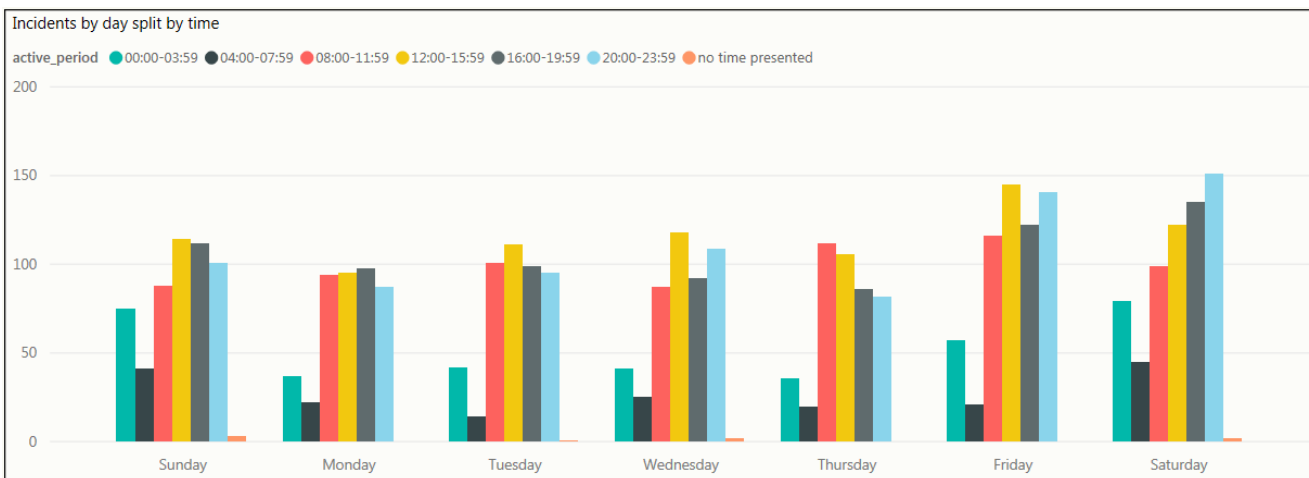
## Average Officers and Time Spent



## Incident Volumes by Date



## Incident Volumes by Day and Time Group



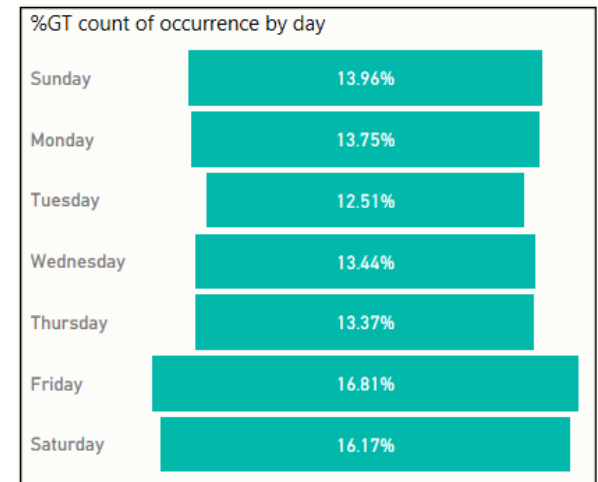
## Highest Wards by Crime Volume

Low Harrogate	Northallerton C...	Granby	Starbeck	Hipswell	Glusburn	Rossett	Richmo...
	65	46	35	Knaresbor...	Woodfield	New Park	Ribston
123	High Harrogate	Northaller...	Thirsk	Ripon Mi...	Skipton ...	Skipton ...	Bedale

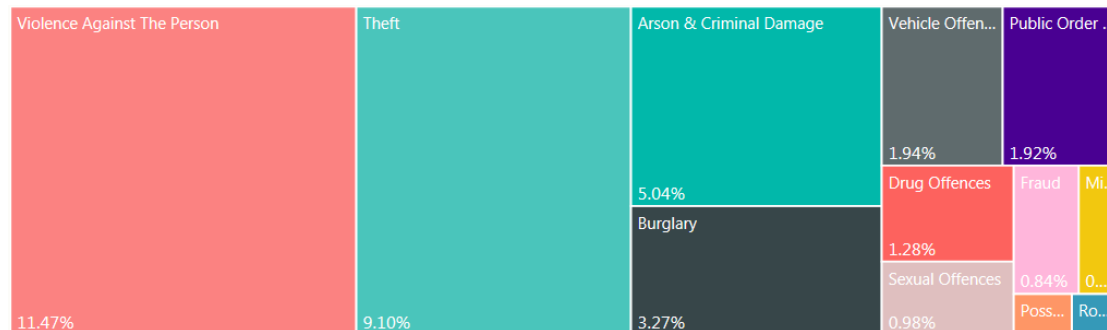
# CRIME – Apr '18 to Mar '19 (Crimes committed)

	Apr'16 –Mar'17	Apr'17 –Mar'18	Apr'18 –Mar'19	% Diff (Apr'17 to Mar '18 compared Apr '18 to Mar '19)
Arson & Criminal Damage	5657	5898	6183	4.8%
Burglary	3610	3646	3981	9.2%
Drug Offences	1573	1433	1624	13.3%
Fraud*	479	527	1090	106.8%
Misc Crimes Against Society	701	749	837	11.7%
Possession Of Weapons	224	248	300	21.0%
Public Order Offences	1409	1520	2405	58.2%
Robbery	155	166	235	41.6%
Sexual Offences	1428	1568	2003	27.7%
Theft: All Other Theft	4357	4355	4880	12.1%
Theft: Bicycle Theft	1353	1118	1229	9.9%
Theft: Shoplifting	4109	4704	4582	-2.6%
Theft: Theft From Person	469	413	484	17.2%
Vehicle Offences	2086	2451	2371	-3.3%
Violence Against The Person	9588	10878	14910	37.1%
<b>Grand Total</b>	<b>37198</b>	<b>39674</b>	<b>47114</b>	<b>18.8%</b>

## % split of all crimes by day of the week



## Year to Date highest % of Crime Types





# ANTI SOCIAL BEHAVIOUR, PUBLIC SAFETY & WELFARE AND CASUALTIES FROM ROAD TRAFFIC COLLISIONS THAT ARE KILLED & SERIOUSLY INJURED

## HAM & RICH SNC

	Apr'18 - Mar'19	% diff Same Period '17
<b>ASB</b>	<b>2956</b>	<b>-21.5%</b>
<b>PSW</b>	<b>12010</b>	<b>5.3%</b>
Miss Person	270	-22.9%
Concern Safety	2616	2.5%
Domestic Inc	661	-12.6%
PSW Other	8463	9.3%
<b>KSI</b>	<b>319</b>	<b>-6.2%</b>

## SCAR & RYE SNC

	Apr'18 - Mar'19	% diff Same Period '17
<b>ASB</b>	<b>6653</b>	<b>-7.9%</b>
<b>PSW</b>	<b>20386</b>	<b>4.1%</b>
Miss Person	707	-25.1%
Concern Safety	5182	-0.6%
Domestic Inc	1548	-3.0%
PSW Other	12949	9.4%
<b>KSI</b>	<b>371</b>	<b>-3.9%</b>

## CRAVEN SNC

	Apr'18 - Mar'19	% diff Same Period '17
<b>ASB</b>	<b>1122</b>	<b>-8.3%</b>
<b>PSW</b>	<b>4640</b>	<b>12.9%</b>
Miss Person	94	-29.9%
Concern Safety	1103	2.1%
Domestic Inc	228	0.0%
PSW Other	3215	20.5%
<b>KSI</b>	<b>177</b>	<b>17.2%</b>

## HARROGATE

	Apr'18 - Mar'19	% diff Same Period '17
<b>ASB</b>	<b>4353</b>	<b>-16.5%</b>
<b>PSW</b>	<b>15471</b>	<b>5.1%</b>
Miss Person	639	-8.1%
Concern Safety	3509	0.8%
Domestic Inc	897	-0.2%
PSW Other	10426	8.1%
<b>KSI</b>	<b>380</b>	<b>-11.6%</b>

## YORK SNC

	Apr'18 - Mar'19	% diff Same Period '17
<b>ASB</b>	<b>7650</b>	<b>-8.6%</b>
<b>PSW</b>	<b>22333</b>	<b>9.7%</b>
Miss Person	710	-14.1%
Concern Safety	5607	1.8%
Domestic Inc	1378	-10.4%
PSW Other	14638	17.2%
<b>KSI</b>	<b>475</b>	<b>4.2%</b>

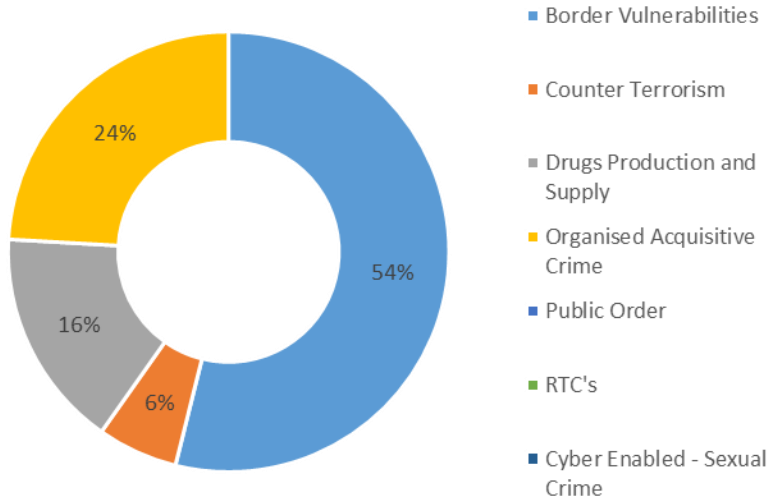
## SELBY SNC

	Apr'18 - Mar'19	% diff Same Period '17
<b>ASB</b>	<b>2357</b>	<b>-15.8%</b>
<b>PSW</b>	<b>8209</b>	<b>11.0%</b>
Miss Person	186	-21.2%
Concern Safety	1836	6.9%
Domestic Inc	616	12.4%
PSW Other	5571	13.8%
<b>KSI</b>	<b>170</b>	<b>6.3%</b>

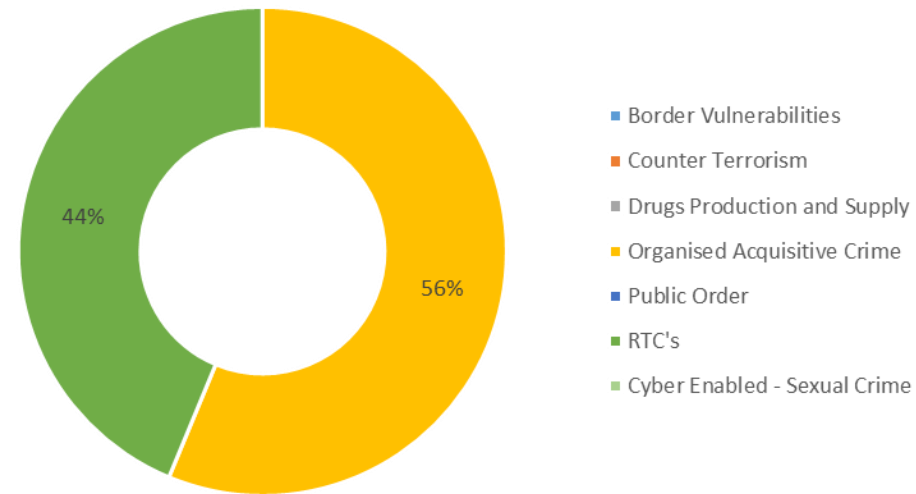
➤ ASB incidents continue to decrease in all SNCs  
 ➤ PSW type incidents continue to be the long term increases experienced across all SNCs. Concern for Safety incidents are showing long term increases as the Police become the first point of contact for vulnerable people, which is reflected in national reporting

# Proactivity: How has proactive policing contributed to control strategies? (Feb 19)

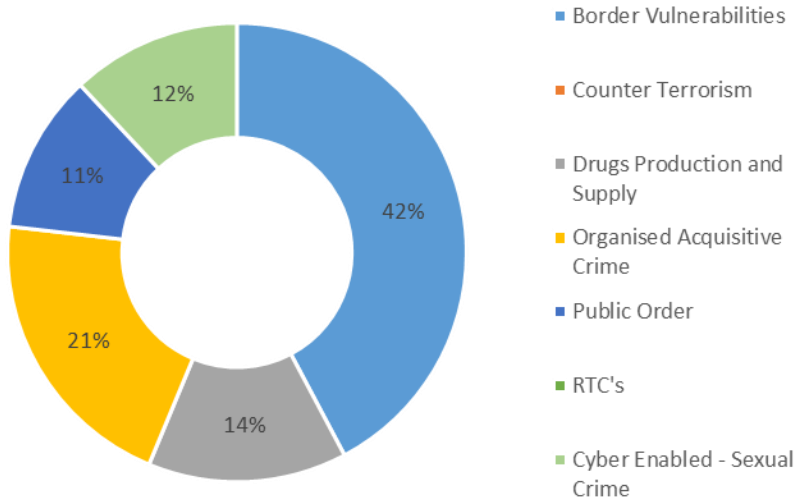
## Split of 1017 hours appointed to FSU



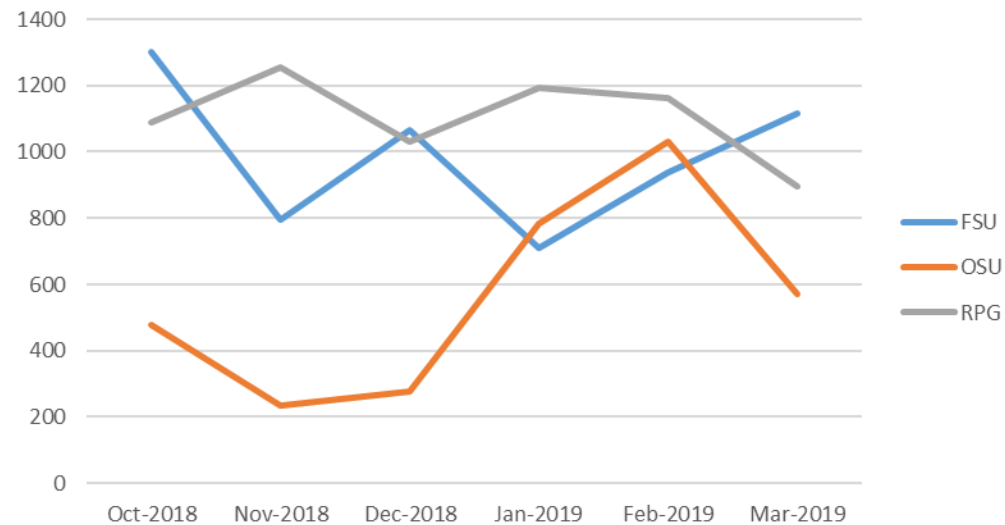
## Split of 894 hours appointed to RPG



## Split of 535 hours appointed to OSU



## Last 6 months Proactive Hours undertaken



# Rural Task Force

## ***Caring for the Vulnerable***

Work ongoing with Victim Support to increase referrals from rural victims of crime.

Collaboration with NHS, Farming Community Network, Yorkshire Agricultural Society and others to improve relevant signposting to mental health services.

Op Woollen, Op Woodchip and Op Crucible aim to provide proactive prevention advice to farms, businesses and historic assets at risk.

Property Marking Events are regularly held to provide reassurance and a deterrent against theft.

## ***Ambitious Collaboration***

Operation Checkpoint dates arranged with other forces for Q2, Q3, and Q4 of 2019.

Other multi force operational dates for cross border operations set with Cleveland, Durham and Lancs.

Regional Enforcement Group chaired in April identifies good practice and crime trends around the Region. Local meetings with neighbouring forces occur monthly.

Op Owl dates planned for later in the year tackling raptor persecution with partners and land owners.

Op Eyeball conducted in April with Hambleton LA, DVSA, DVLA and NYP RPG to tackle potential fly-tipping offenders. Further dates planned through rest of year.

National Park Authorities and AONB in NYP collaborate with RTF on various work streams including tackling wildlife crime, and use of volunteers.

Collaboration with 3 forces nationally to develop a What Works strategy around poaching.

Other forces including Warwickshire and Northumbria looking at RTF to develop similar teams of their own in coming months.

Team members support the national meeting structure for Priority Delivery Groups on Wildlife and Rural Crime, developing thematic based problem solving.

## ***Reinforcing Local Policing***

Identify and support local priorities including Op Night (Craven), Op Meteor (Selby) and Op Cargo (County).

Op Sidekick is an intelligence led operation to proactively tackle plant and machinery theft through a series of tactics, and continues.

Op Extractor investigation and proactive response to a series of burglaries and thefts in the north of the county, as well as OCG management.

Op Existence investigation into livestock theft and subsequent sale, OCG management and working with partners such as NFCU to tackle OCG.

Poaching remains a major issue for rural communities, and Op Galileo will be revisited for the new poaching season to judge its' efficacy.

## ***Enhancing Customer Experience***

Op Harvester works with volunteers based in community groups to actively work with local officers to tackle rural criminality in their areas. There are now sixteen across North Yorkshire comprising 200+ PSV's.

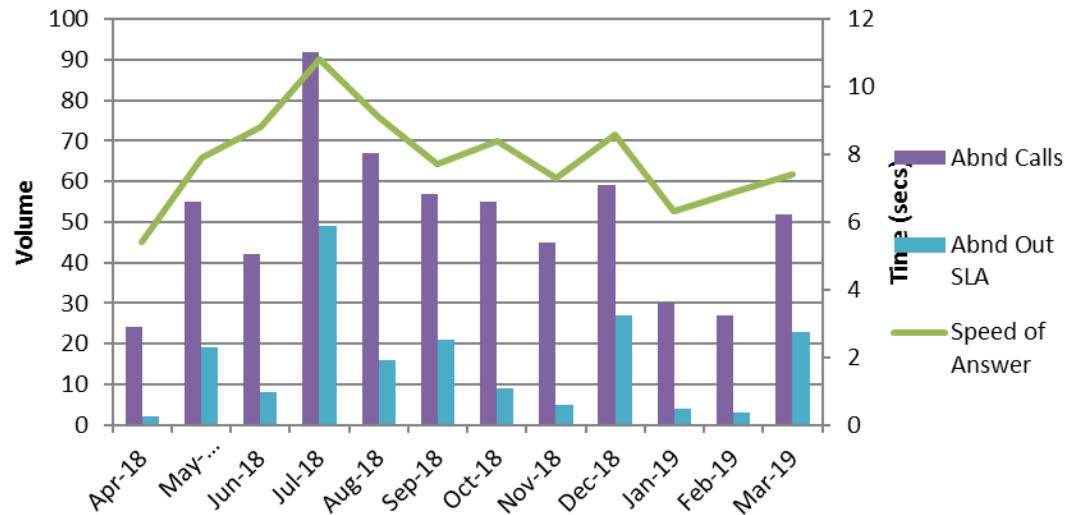
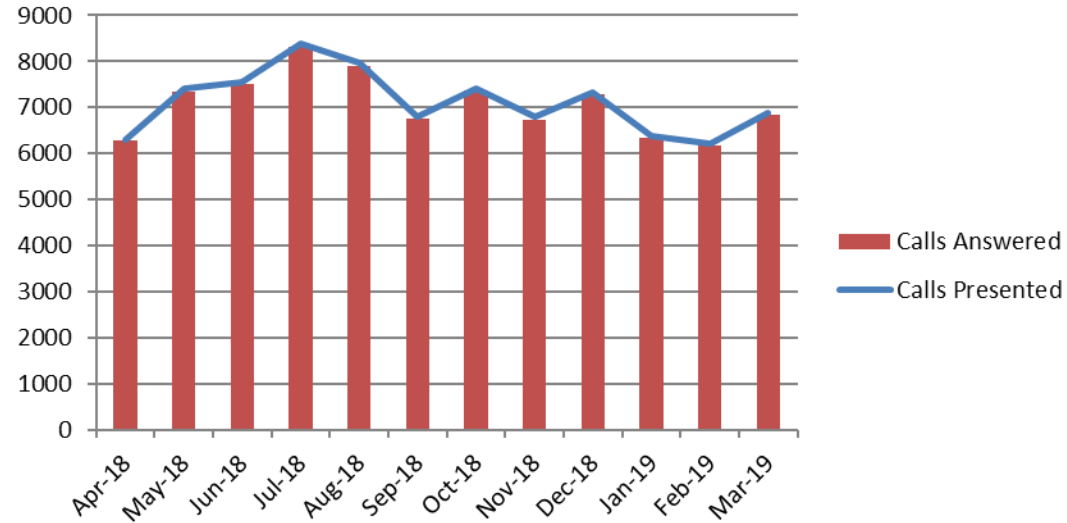
WhatsApp has recently been piloted as a tool to improve communication between community groups and the police. This has been successful in one area, and is being rolled out into 2 others.

Officers on area are developing engagement strategies around local events to engage with rural communities.

Internal Sharepoint site is being developed to communicate the work of RTF to police colleagues.

# Initial Contact – 999

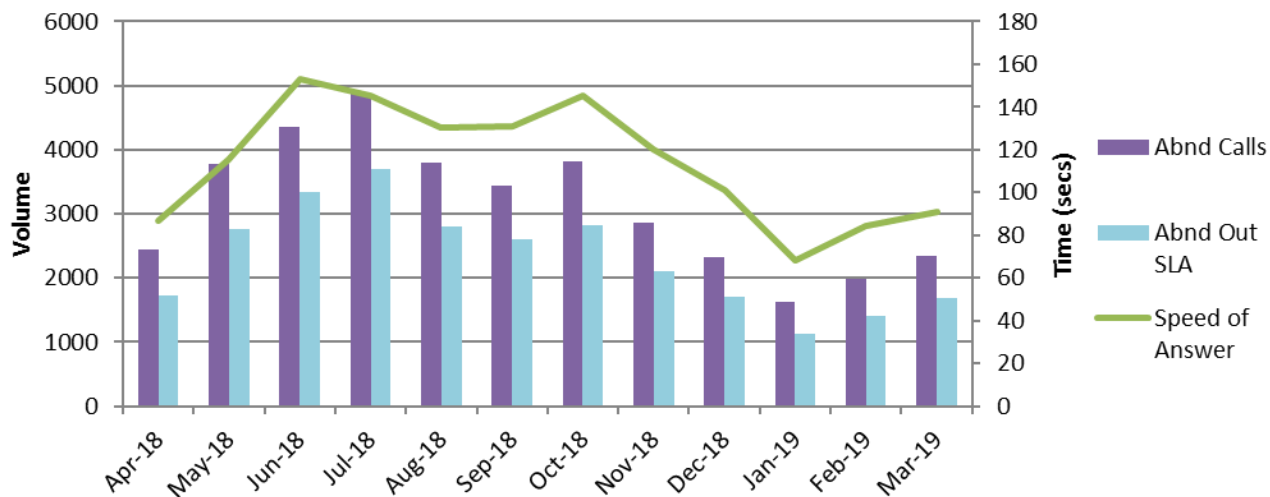
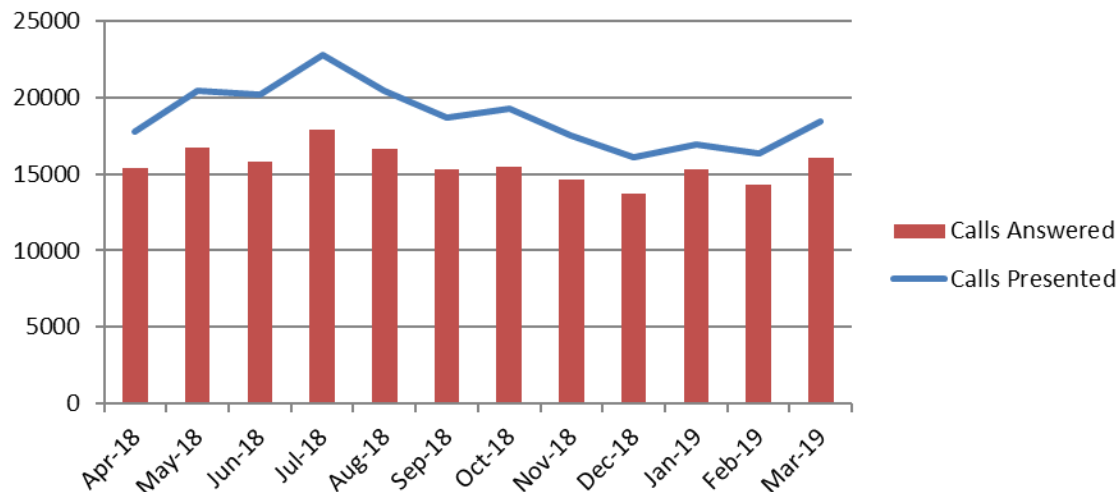
Month	Calls Presented	Calls Answered	Speed of Answer	Abnd Calls
Apr-18	6304	6280	5.4	24
May-18	7409	7354	7.9	55
Jun-18	7563	7521	8.8	42
Jul-18	8400	8308	10.8	92
Aug-18	7961	7894	9.1	67
Sep-18	6811	6754	7.7	57
Oct-18	7413	7358	8.4	55
Nov-18	6788	6743	7.3	45
Dec-18	7340	7281	8.6	59
Jan-19	6383	6353	6.3	30
Feb-19	6203	6176	6.9	27
Mar-19	6888	6836	7.4	52



- Answer time consistently under 10 seconds for 8 months
- Transfers to secondary and alternate lines continue to be within national guideline of 2%

# Initial Contact - 101

Month	Calls Presented	Calls Answered	Speed of Answer	Abnd Calls
Apr-18	17782	15347	86.9	2435
May-18	20469	16697	115.5	3772
Jun-18	20153	15807	153.2	4346
Jul-18	22796	17927	145.2	4869
Aug-18	20420	16627	130.6	3793
Sep-18	18713	15266	131	3447
Oct-18	19280	15454	145.3	3826
Nov-18	17513	14653	120.3	2860
Dec-18	16061	13743	101.3	2318
Jan-19	16944	15327	68.5	1617
Feb-19	16308	14325	84.1	1983
Mar-19	18402	16056	91	2346



- Despite an increase of 2094 calls the answer time has remained under 2 minutes. Speed of answer has been consistently under 2 mins for the last 4 months
- Call duration has consistently been over 5 minutes for 14 consecutive months

# Local Policing – Police and Crime Plan 2017-2021

Hambleton	Apr17 - Mar 18	Apr 18 - Mar 19	Diff
Burglary	291	370	27.1%
Road	5511	4975	-9.7%
Mental Health	1097	1343	22.4%

Scarborough	Apr17 - Mar 18	Apr 18 - Mar 19	Diff
Burglary	501	606	21.0%
Drug Offences	306	398	30.1%
ASB	6057	5672	-6.4%

Richmondshire	Apr17 - Mar 18	Apr 18 - Mar 19	Diff
Drug Offences	48	25	-47.9%
Burglary	179	134	-25.1%
ASB	1357	918	-32.4%

Ryedale	Apr17 - Mar 18	Apr 18 - Mar 19	Diff
Burglary	141	167	18.4%
Drug Offences	53	72	35.8%
ASB	1163	980	-15.7%
Road	3416	2990	-12.5%

Harrogate	Apr17 - Mar 18	Apr 18 - Mar 19	Diff
Burglary	692	877	26.7%
ASB	5213	4353	-16.5%
Road	8157	8302	1.8%
Cyber	117	150	28.2%

York	Apr17 - Mar 18	Apr 18 - Mar 19	Diff
Violence	3198	4299	34.4%
Burglary	997	1028	3.1%
ASB	8372	7650	-8.6%
Cyber	124	245	97.6%

Craven	Apr17 - Mar 18	Apr 18 - Mar 19	Diff
Burglary	267	350	31.1%
Road	2674	2429	-9.2%
Crime	2043	2407	17.8%

Selby	Apr17 - Mar 18	Apr 18 - Mar 19	Diff
Drugs	134	141	5.2%
Burglary	574	445	-22.5%
ASB	2799	2357	-15.8%
Cyber	47	109	131.9%

# GLOSSARY

## Glossary

- ASB = Anti-Social Behaviour
- CMS = Community Messaging System
- Concern Safety = Concern for Safety – includes all occurrences where there is a concern for an individual's safety or welfare
- Fraud Offences = These are not included in the crime statistics as they are not reported by forces to the Home Office. Instead these crimes are passed to Action Fraud and statistics are collated by that agency
- FSU = Firearms Support Unit
- I Grade = priority assigned by control room for an incident requiring ImmEDIATE police response
- KSI = A casualty Killed or Seriously Injured as a result of a Road Traffic Collision on a public road
- MCU = Major Crime Unit
- Miss Pers = Missing Person
- MO = Modus Operandi
- NPS = New PsychoaSubstances is the official term for Legal Highs
- NTE = Night Time Economy
- OCG = Organised Crime Group
- OSU = Operational Support Unit – a specialist unit which is deployed around the force through tactical bidding process
- OPL = Over Prescribed Limit typically the term used to describe failing a breath test
- PCSO = Police Community Support Officer
- PSW = Personal Safety and Welfare
- Resolved Outcome = A crime where an offender has been dealt with through sanction or restorative justice.
- RPG = Roads Policing Team
- RTF = Rural Task Force
- SNC = Safer Neighbourhood Command – Area of Policing attributed to
- Sus Circs = Suspicious Circumstances – includes Insecure premises and Vehicles
- TIC = Taken Into Consideration is typically where an offender admits to further offences to avoid potentially being pursued for these at a later date.

# Public Accountability Board

## Part b) People



Reporting Period: As at end of March 2019

NB: Statistics remain provisional and subject to change

**BE SAFE**  
**FEEL SAFE**





# HR OVERVIEW

## Police Officers

Police Officer	Apr-18	May-18	Jun-17	Jul-18	Aug-18	Sep-18	Oct-18	Nov-18	Dec-18	Jan-19	Feb-19	Mar-19	Apr-19
Officer Long-term FTE Target	1,400.0	1,400.0	1,400.0	1,400.0	1,400.0	1,400.0	1,400.0	1,400.0	1,400.0	1,400.0	1,400.0	1,400.0	1,400.0
Officer FTE Budget for the month after vacancy factor	1,364.00	1,359.5	1,355.5	1,370.5	1,389.5	1,380.5	1,373.5	1,367.5	1,391.5	1,386.5	1,401.5	1,395.5	1,394.5
Actual/ Projected Officer Numbers (includes recruitment)	1347.31	1342.22	1338.10	1340.70	1,359.45	1,350.16	1356.80	1349.96	1347.01	1341.26	1365.80	1357.01	1380.88

The above figures have been amended to include the Officer FTE Budget for the month after vacancy factor and also what the projected numbers are for the rest of the financial year (figures in shaded boxes).

The actual number of Officers has increased by 23.87 FTE from the previous month. The 29 starters are broken down to 25 student officers and 5 transfers. The 6 leavers are broken down to 3 retirements, 2 resignations and 1 officer transfer to another force. The number of leavers was more than the leaver projections.

The next intake of Student Officers is planned for June 2019, with further intakes being planned in order to meet the target figure of 1450.

## PCSO

PCSO	Apr-18	May-18	Jun-18	Jul-18	Aug-18	Sep-18	Oct-18	Nov-18	Dec-18	Jan-19	Feb-19	Mar-19	Apr-19
PCSO Long-term FTE Target	200.0	200.0	200.0	200.0	200.0	200.0	200.0	200.0	200.0	200.0	200.0	200.0	200.0
PCSO FTE Budget	214.00	200.00	200.00	200.00	200.00	200.00	200.00	200.00	200.00	200.00	200.00	200.00	200.00
Actual/Projected PCSO Numbers (includes recruitment)	195.36	208.51	206.52	206.43	202.07	201.05	196.11	194.95	194.95	193.95	187.01	185.26	183.37

The actual number of PCSOs has decreased by 1.89FTE from the previous month. 2 PCSOs resigned.

The next intake of PCSOs is scheduled for June 2019.

# HR OVERVIEW

## Staff

BUDGET:	Apr 18	May 18	Jun 18	Jul 18	Aug 18	Sep 18	Oct 18	Nov 18	Dec 18	Jan 19	Feb 19	Mar 19	Apr 19
OPCC	13.0	13.0	13.0	13.0	13.0	13.0	13.0	13.0	13.0	13.0	13.0	13.0	11.0
Project Staff (incl Agency)	20.0	20.0	20.0	20.0	20.0	20.0	20.0	20.0	20.0	20.0	20.0	20.0	3.0
Commissioned Services	13.8	13.8	13.8	13.8	13.8	13.8	13.8	13.8	13.8	13.8	13.8	13.8	11.8
Corporate Services	192.1	192.1	192.1	192.1	192.1	192.1	192.1	192.1	192.1	192.1	192.1	192.1	202.8
Chief Constable	889.4	889.4	889.4	889.4	889.4	889.4	889.4	889.4	889.4	889.4	889.4	889.4	920.8
Total Staff FTE Budget for the month (after vacancy factor)	1128.0	1128.0	1128.0	1128.0	1128.0	1128.0	1128.0	1128.0	1128.0	1128.0	1128.0	1128.0	1149.5
ACTUAL:													
OPCC	10.75	10.74	10.74	10.74	9.24	8.24	10.24	10.10	10.10	10.10	12.11	12.10	12.10
Project Staff (incl Agency)	40.55	37.19	31.41	32.41	9.00	7.00	7.00	7.00	8.00	7.00	6.14	6.14	6.00
Commissioned Services	10.43	11.24	12.24	12.24	11.74	12.24	12.24	12.24	12.44	13.44	13.45	14.44	13.63
Corporate Services	194.33	201.8	197.51	195.58	194.58	195.58	191.58	190.58	188.44	187.47	189.47	188.58	187.97
Chief Constable	904.04	911.14	909.43	902.94	892.18	890.25	877.19	871.23	884.92	881.50	879.18	881.49	879.92
Total Staff against budget FTE	1160.10	1172.11	1161.35	1,153.91	1116.74	1113.31	1098.25	1091.15	1103.90	1099.51	1100.35	1102.75	1099.62
Permanent Staff FTE	1054.59	1066.91	1062.60	1056.59	1048.01	1045.50	1035.43	1033.58	1044.29	1041.39	1038.60	1035.00	1039.46
Temporary Staff FTE (not including agency)	79.39	74.21	69.76	69.76	52.16	51.24	46.24	39.99	48.04	47.54	52.16	57.16	53.67
Agency Staff FTE	26.12	30.99	28.99	27.58	16.58	16.58	16.58	17.58	11.58	10.58	9.58	7.58	6.49
Total Staff against budget FTE	1160.10	1172.11	1161.35	1153.93	1116.75	1113.32	1098.25	1091.15	1103.91	1099.51	1100.34	1102.74	1099.62

The Staff Budget has been adjusted for 2017/ 2018. The budget is managed on a monthly basis depending upon business requirements and therefore is likely to change during the financial year.

The projections remain static as the majority of current recruitment is internal; therefore we are unlikely to see a significant increase in staff numbers over all.

OPCC figures do not include the PCC, DPCC or Fraser Sampson The total number of actual Staff has decreased by 3.12 FTE from the previous month.

1 x agency staffs are in supernumerary posts.

5.49 x agency staff are backfill or interim postings against established posts (includes part time agency staff).

# HR OVERVIEW

	Apr 18	May 18	Jun 18	Jul 18	Aug 18	Sep 18	Oct 18	Nov 18	Dec 18	Jan 19	Feb 19	Mar 19	Apr 19
<b>Total Budget of all Officers, PCSO and Staff</b>	2682.2	2631.7	2627.7	2698.5	2717.5	2708.5	2701.5	2695.5	2719.5	2714.5	2729.5	2723.5	2722.5
<b>Total Actual Number of all Officers, PCSO and Staff</b>	2676.65	2721.82	2705.98	2701.06	2678.26	2664.53	2651.16	2636.06	2645.87	2634.72	2653.16	2637.44	2657.38

## Citizens in Policing

	Apr 18	May 18	Jun 18	Jul 18	Aug 18	Sep 18	Oct 18	Nov 18	Dec 18	Jan 19	Feb 19	Mar 19
<b>Actual Specials FTE</b>	130.00	142.00	137.00	131.00	131.00	130.00	127.00	141.00	141.00	130.00	117.00	117.00
<b>Actual Volunteers (including Police Cadets)</b>	265.00	266.00	268.00	246.00	240.00	265.00	290.00	289.00	289.00	318.00	325.00	331.00

The actual number of Special Constables has remained the same as the previous month.

We currently have 331 volunteers in the following roles;

- Volunteer Advisors
- Front Counter Support
- Safer Neighbourhood Support
- Rural Watch Patrol
- Tape and information facilitator
- Police Cadets
- Police Cadet Leaders
- PSV Driver
- Neighbourhood Support Volunteer
- Vehicle Checker