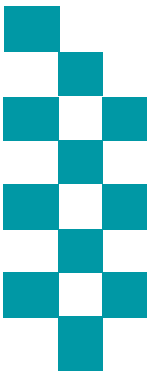


Public Accountability Board



Meeting Date: 24th September 2019 13:30



BE SAFE
FEEL SAFE

Agenda



Caring About the Vulnerable

Mental Health

s136 Detentions



Ambitious Collaboration

Force Overview

City Command

Coastal Command



Reinforcing Local Policing

County Command

Crime Trends

Crime Focus

ASB/PSW
Incidents

Proactive Policing



Enhancing the Customer Experience

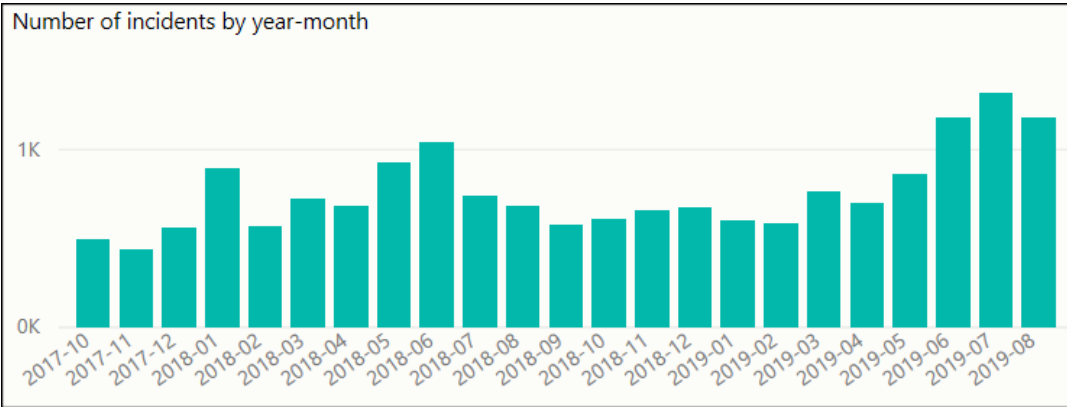
999

101

Local Priorities

Mental Health

Occurrences involving a person(s) with a mental health qualifier



- There are significant increases in occurrences with Mental Health tags in the last 4 months.
- As of 1st April 2019, NYP adopted the new NPCC definition of Mental Health, this has given a clearer definition of incidents that have mental health at its centre. Leading to increased tagging of incidents and a better response for those occurrences.
- Incidents with a Mental Health tag have accounted for 10.1% of all incidents in the last 22 months

Incidents with highest number of Mental Health Tag (Sept '18 – Aug '19)

Description	Volume with mental health tag	% of All Type of Incidents
CONC SAFETY/TRAPPED/INJ/ILL	5225	42.47%
MISSING PERSON	626	37.31%
DOMESTIC INCIDENT	769	15.12%
VIOLENCE	948	10.98%
ASB NUISANCE	524	5.55%

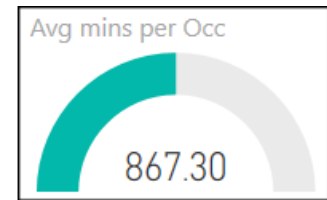
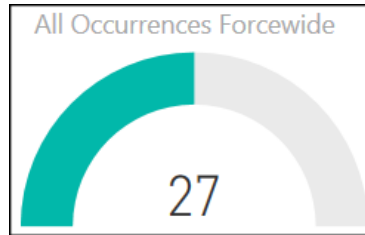
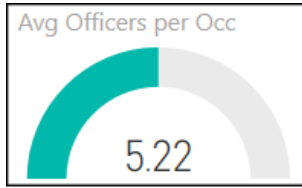
Incident data (left) relates to the initial police response where Mental health presented and was tagged on the incident

Use of police custody as a place of safety

Police custody must only be used for s136 MHA detainees in highly exceptional circumstances, e.g. genuinely unmanageable risks of resistance, aggression, violence or escape, or if also detained for an offence. We scrutinise every use of custody in these circumstances. Further details are included on the following slide.

s136 Detentions (Police Custody)	Sep-18	Oct-18	Nov-18	Dec-18	Jan-19	Feb-19	Mar-19	Apr-19	May-19	Jun-19	Jul-19	Aug-19
Under 18	0	0	0	0	0	0	0	0	0	0	0	0
Aged 18 or Over	2	0	1	4	2	2	3	0	2	1	1	1
Total	2	0	1	4	2	2	3	0	2	1	1	1

s136 – August 2019

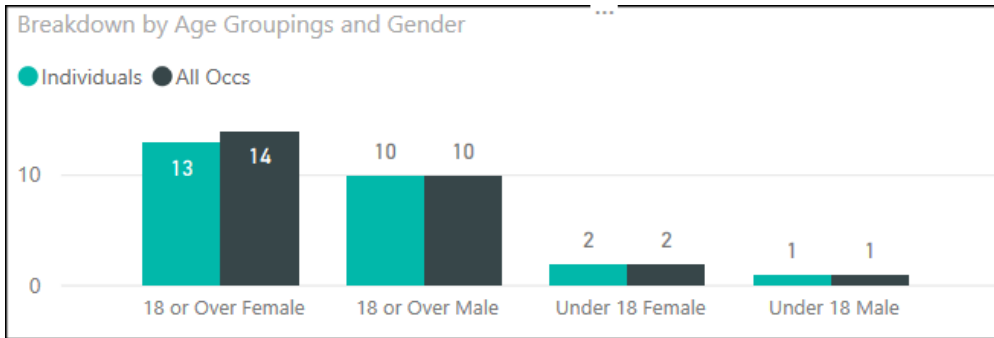


By Occurrence Type

Closing Code Desc	Occs
CONC SAFETY/TRAPPED/INJ/ILL	25
CRIMINAL DAMAGE	1
ROAD RELATED OFFENCE	1
Total	27

- August 2019 saw a return to the average incident volume levels
- There were 2 detainees required to be taken out of the county this month
- 1 individuals had repeat s136 detentions in August 2019.
- 16 incidents required Police transportation:
 - 10 following Risk assessment
 - 4 No Ambulance called
 - 2 No Ambulance available within 30 mins

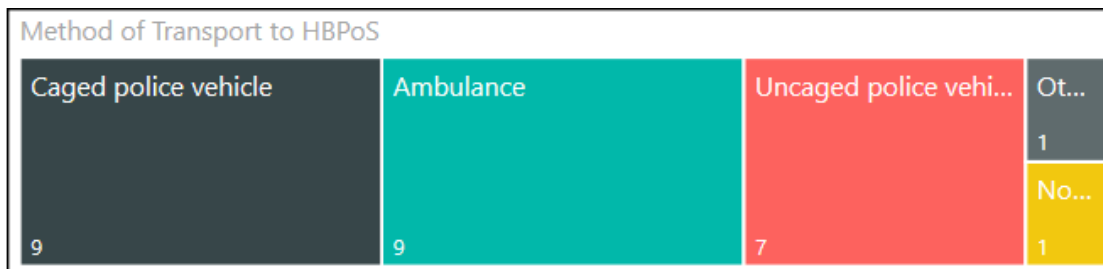
Gender/Age Breakdown and Repeat Nominals



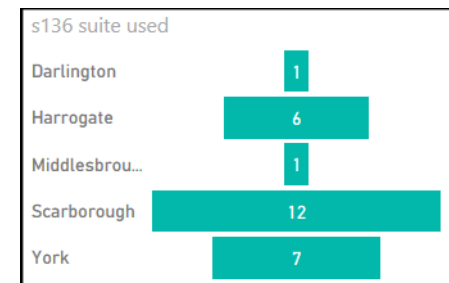
Outcomes

Outcome	Totals
Not open to services. Returned to the community without follow up	10
Open to services, returned to the community with follow up by current service	6
Informal admission	4
Returned to the community with follow up arranged at assessment	4
Formal Admission	3
Total	27

Mode of Transport



HBPOs Usage



Force Levels (Incidents and Crimes Committed August 2019)

Count of all Incidents and type

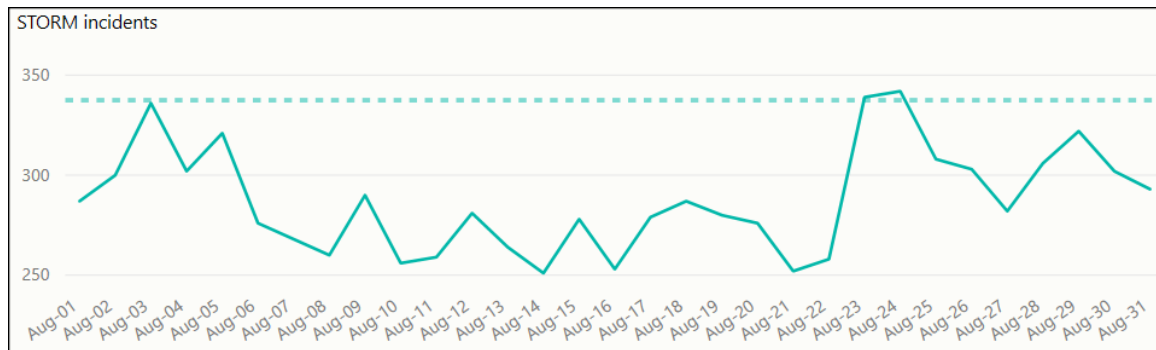
Count of incidents

8,104

Total Crimes Committed

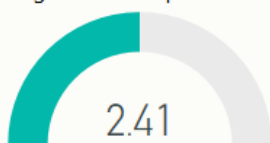
3998

Incident Volumes by Date

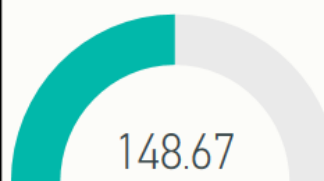


Average Officers and Time Spent

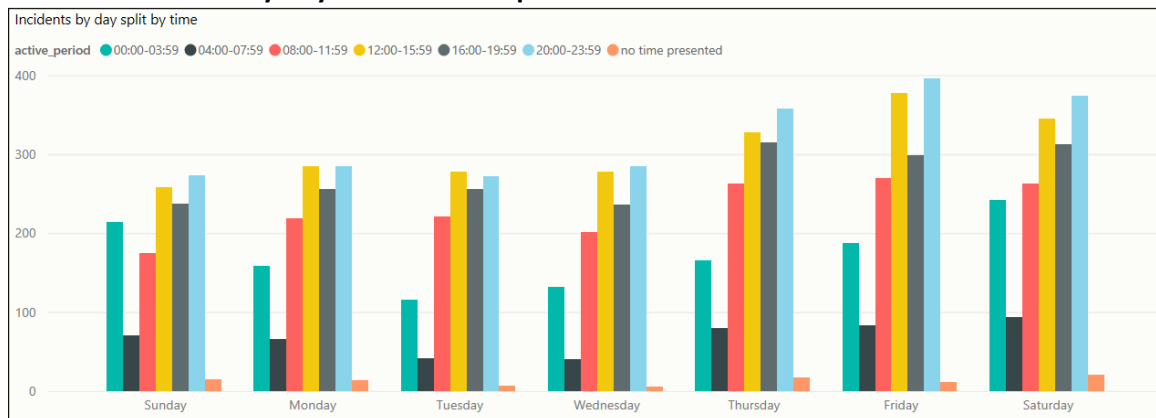
Average resources per incident



Average minutes per incident



Incident Volumes by Day and Time Group



Highest Wards by volume of Crime

Guildhall Inner (NYP)	Low Harr...	Selby South	Clifton	Fisher...
2779	1507	Heworth	Huntingt...	Eastfi...
Castle	Westfield	Micklegate...	Central	North...
2775	1254			

Volume by Crime type

Crime	2019-08
Arson & Criminal Damage	453
Burglary	350
Drug Offences	107
Fraud	281
Misc Crimes Against Society	55
Possession Of Weapons	24
Public Order Offences	255
Robbery	16
Sexual Offences	70
Theft	999
Vehicle Offences	193
Violence Against The Person	1195
Total	3998

City Command (Incidents and Crimes Committed August 2019 – York and Selby)

Count of all Incidents and type

Count of incidents

2,961

Total Crimes Committed

1583

Average Officers and Time Spent

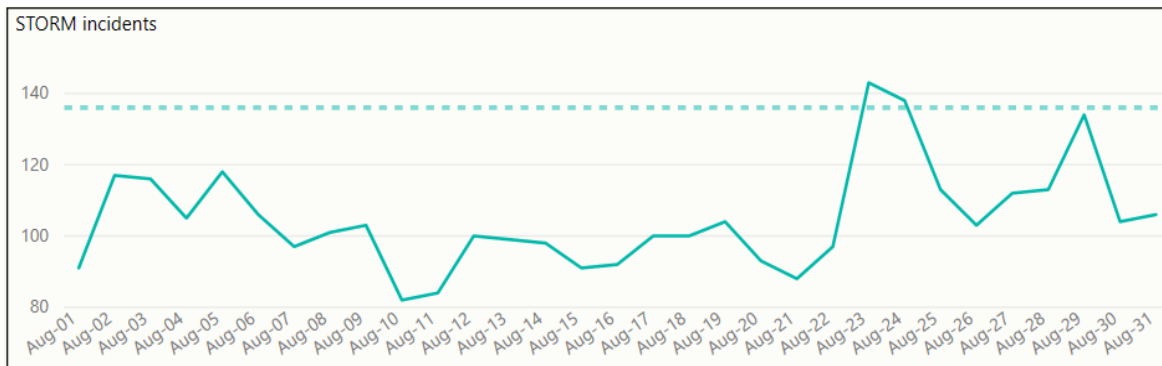
Average resources per incident

2.56

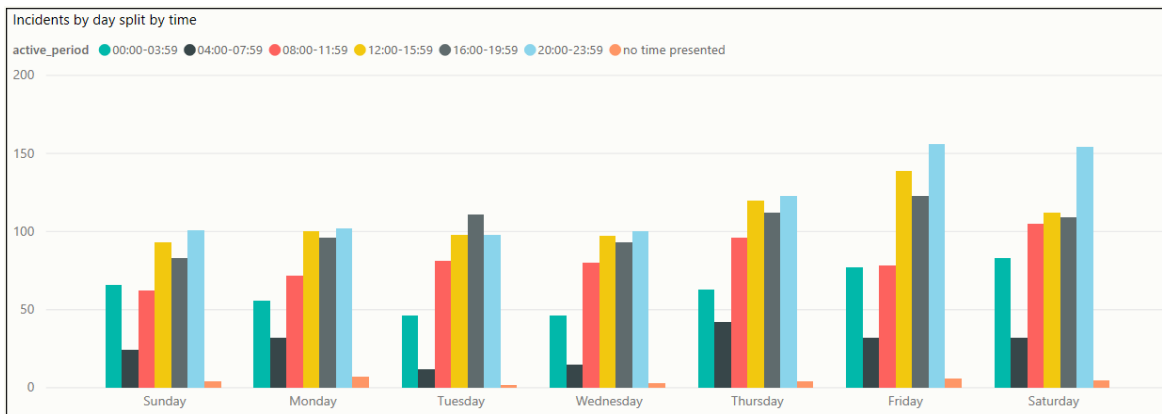
Average minutes per incident

161.92

Incident Volumes by Date



Incident Volumes by Day and Time Group



Highest Wards by Crime Volume

Guildhall Inner (NYP)	Westfield	Huntington and Ne...	Clifton	Holgate
209	91	80	75	59
	Selby South	Heworth	Micklegate Outer...	Fishergate
	91	79	65	57

Volume by Crime type

Crime	2019-08
Arson & Criminal Damage	159
Burglary	150
Drug Offences	48
Fraud	80
Misc Crimes Against Society	22
Possession Of Weapons	7
Public Order Offences	104
Robbery	7
Sexual Offences	25
Theft	445
Vehicle Offences	83
Violence Against The Person	453
Total	1583

Coastal Command (Incidents and Crimes Committed August 2019 – Scarborough and Ryedale)

Count of all Incidents and type

Count of incidents

2,137

Total Crimes Committed

1059

Average Officers and Time Spent

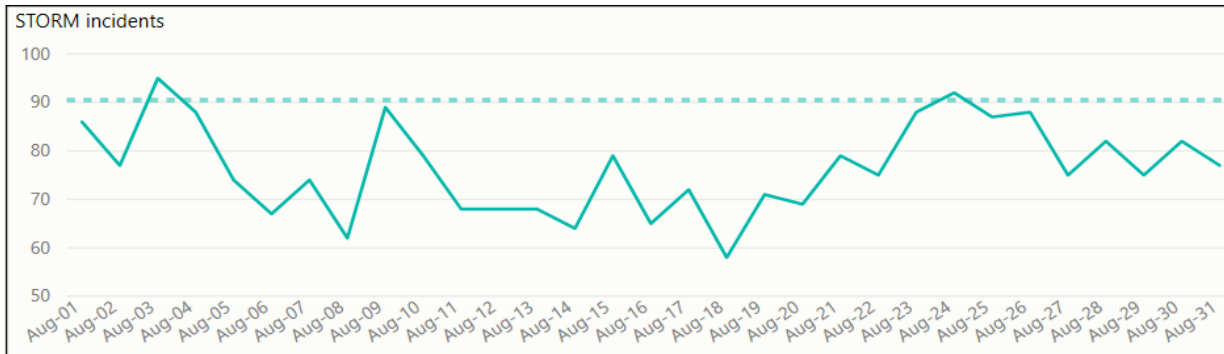
Average resources per incident

2.42

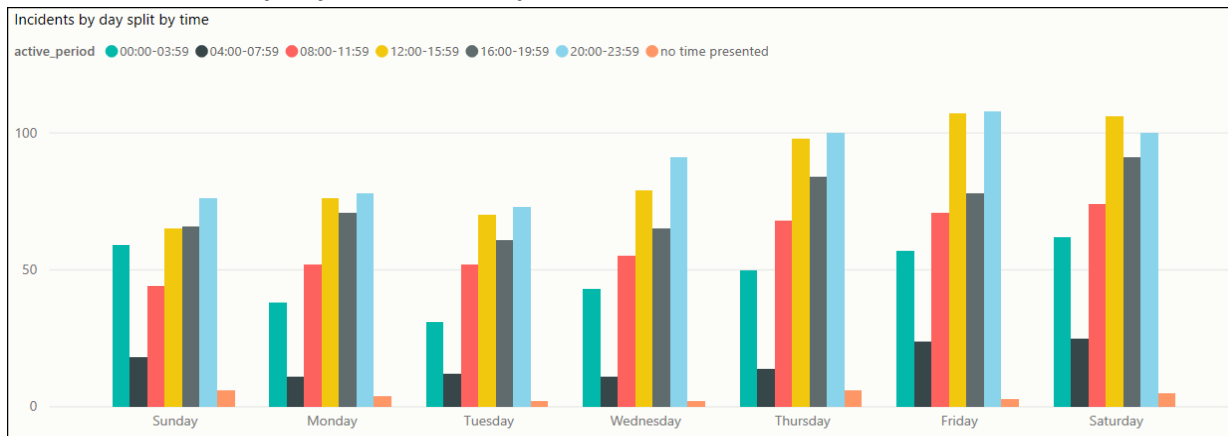
Average minutes per incident

149.35

Incident Volumes by Date



Incident Volumes by Day and Time Group



Highest Wards by Crime Volume

Castle	Central	Eastfield	Woodlands	Northstead
	63	53	44	37
201	Filey	Streonshalh	North Bay	Ramshill
	55	51	40	36

Volume by Crime type

Crime	2019-08
Arson & Criminal Damage	144
Burglary	70
Drug Offences	26
Fraud	74
Misc Crimes Against Society	15
Possession Of Weapons	11
Public Order Offences	81
Robbery	2
Sexual Offences	19
Theft	244
Vehicle Offences	31
Violence Against The Person	342
Total	1059

County Command (Incidents and Crimes Committed August 2019 – Hamb, Rich, H'gate and Craven)

Count of all Incidents and type

Count of incidents
2,983

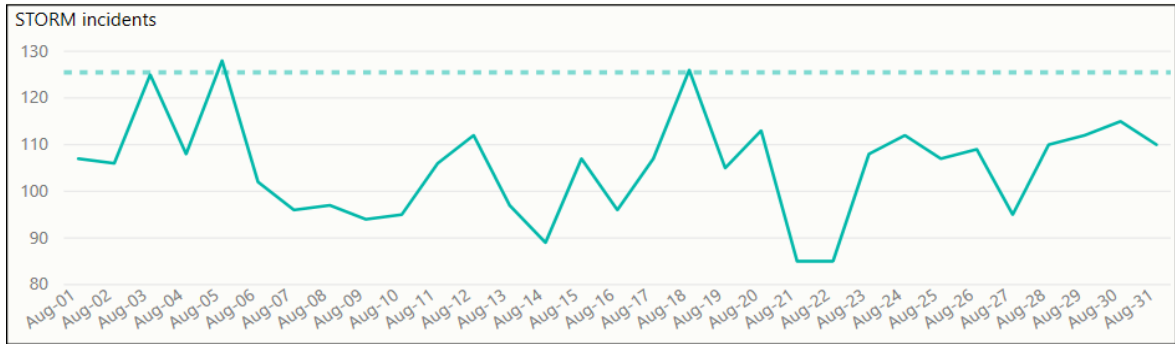
Total Crimes Committed
1352

Average Officers and Time Spent

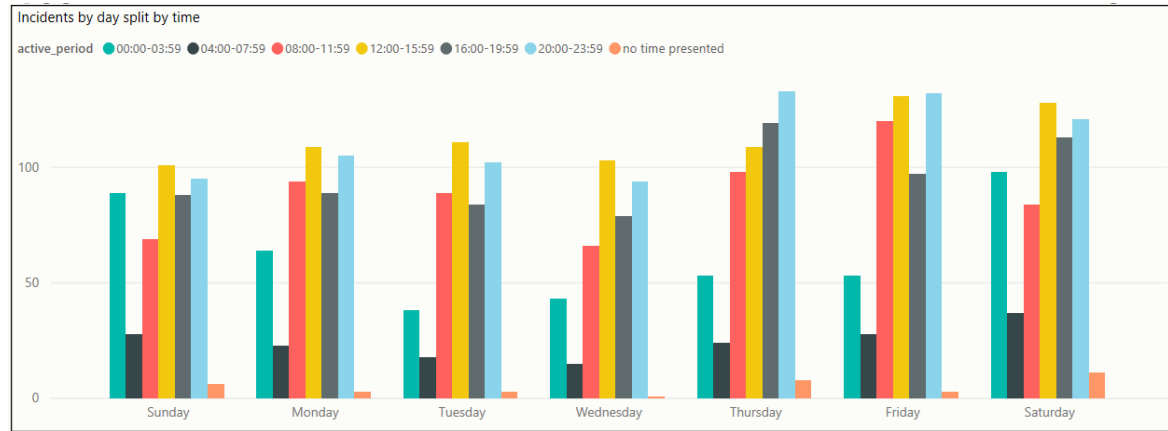
Average resources per incident
2.24

Average minutes per incident
135.06

Incident Volumes by Date



Incident Volumes by Day and Time Group



Volume by Crime type

Crime	2019-08
Arson & Criminal Damage	150
Burglary	130
Drug Offences	33
Fraud	127
Misc Crimes Against Society	18
Possession Of Weapons	6
Public Order Offences	69
Robbery	7
Sexual Offences	26
Theft	312
Vehicle Offences	79
Violence Against The Person	395
Total	1352

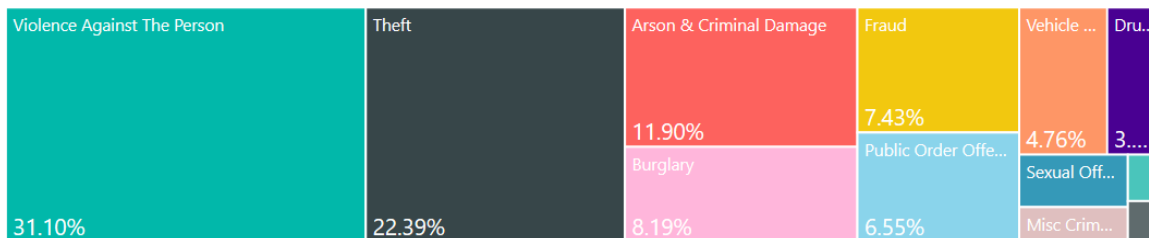
Highest Wards by Crime Volume

Low Harrogate	High Harrog...	Ripon Mins...	Northall...	Starbeck
	48	47	36	32
	Granby	Skipton W...	New Park	Great ...
104	48	38	36	30

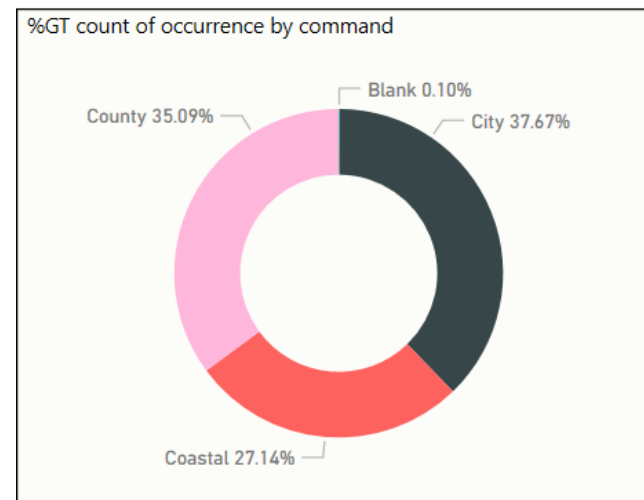
CRIME – Financial Year to Date Comparison (Crimes Committed)

	Apr-Aug '17	Apr-Aug '18	Apr-Aug '19	% Diff (2019 compared 2018)
Arson & Criminal Damage	2566	2606	2458	-5.7%
Burglary	1492	1603	1644	2.6%
Drug Offences	635	749	673	-10.1%
Misc Crimes Against Society	347	279	334	19.7%
Possession Of Weapons	89	128	135	5.5%
Public Order Offences	736	1072	1306	21.8%
Robbery	75	102	89	-12.7%
Sexual Offences	511	534	525	-1.7%
Theft: All Other Theft	1926	2107	1951	-7.4%
Theft: Bicycle Theft	495	536	485	-9.5%
Theft: Shoplifting	1994	1934	1962	1.4%
Theft: Theft From Person	145	224	227	1.3%
Vehicle Offences	1017	1049	941	-10.3%
Violence Against The Person	4598	5962	6441	8.0%
Grand Total	16626	18885	19171	1.5%

% Split of Crime Types



% split of all crimes by Command



CRIME FOCUS – Financial Year To Date

HAM & RICH SNC

	Apr-Aug '19	% diff Same Period '18
CRIME	2288	4.4%
Burglary	194	-4.4%
Theft: Other	282	3.7%
Theft: Shoplifting	146	-2.0%
Criminal Damage	318	-9.9%
Drug Offences	79	31.7%
Violence Offences	859	15.3%

SCAR & RYE SNC

	Apr-Aug '19	% diff Same Period '18
CRIME	5096	9.0%
Burglary	324	0.6%
Theft: Other	478	-11.5%
Theft: Shoplifting	476	9.2%
Criminal Damage	696	7.1%
Drug Offences	207	-4.6%
Violence Offences	1885	11.3%

CRAVEN SNC

	Apr-Aug '19	% diff Same Period '18
CRIME	961	-1.4%
Burglary	144	-3.4%
Theft: Other	99	-25.6%
Theft: Shoplifting	75	13.6%
Criminal Damage	114	-3.4%
Drug Offences	27	-28.9%
Violence Offences	296	20.3%

YORK SNC

	Apr-Aug '19	% diff Same Period '18
CRIME	5541	-0.8%
Burglary	364	-4.5%
Theft: Other	552	1.1%
Theft: Shoplifting	797	21.3%
Criminal Damage	624	-10.1%
Drug Offences	187	-20.1%
Violence Offences	1693	-1.3%

HARROGATE

	Apr-Aug '19	% diff Same Period '18
CRIME	3421	-4.9%
Burglary	353	-4.1%
Theft: Other	382	-2.6%
Theft: Shoplifting	340	-17.1%
Criminal Damage	465	-12.4%
Drug Offences	118	-12.6%
Violence Offences	1065	10.4%

SELBY SNC

	Apr-Aug '19	% diff Same Period '18
CRIME	1842	0.8%
Burglary	262	47.2%
Theft: Other	157	-28.6%
Theft: Shoplifting	128	-40.5%
Criminal Damage	241	-6.2%
Drug Offences	54	-12.9%
Violence Offences	630	7.5%

ANTI SOCIAL BEHAVIOUR, PUBLIC SAFETY & WELFARE AND CASUALTIES FROM ROAD TRAFFIC COLLISIONS THAT ARE KILLED & SERIOUSLY INJURED

HAM & RICH SNC

	Apr-Aug '19	% diff Same Period '18
ASB	1105	-23.4%
PSW	5477	8.1%
Missing Person	125	9.6%
Concern Safety	1145	3.4%
Domestic Inc	266	-8.3%
KSI	152	15.2%

SCAR & RYE SNC

	Apr-Aug '19	% diff Same Period '18
ASB	2750	-18.1%
PSW	9325	1.9%
Missing Person	369	12.8%
Concern Safety	2229	-6.5%
Domestic Inc	627	-13.3%
KSI	173	-1.2%

CRAVEN SNC

	Apr-Aug '19	% diff Same Period '18
ASB	397	-30.1%
PSW	2019	3.2%
Missing Person	49	-5.8%
Concern Safety	444	-12.9%
Domestic Inc	85	-18.3%
KSI	68	-25.3%

HARROGATE

	Apr-Aug '19	% diff Same Period '18
ASB	1892	-12.0%
PSW	6863	2.3%
Missing Person	239	-21.1%
Concern Safety	1462	-8.9%
Domestic Inc	366	-7.1%
KSI	163	0.6%

YORK SNC

	Apr-Aug '19	% diff Same Period '18
ASB	2958	-17.8%
PSW	9831	3.1%
Missing Person	283	-2.1%
Concern Safety	2356	-2.8%
Domestic Inc	506	-26.0%
KSI	207	12.5%

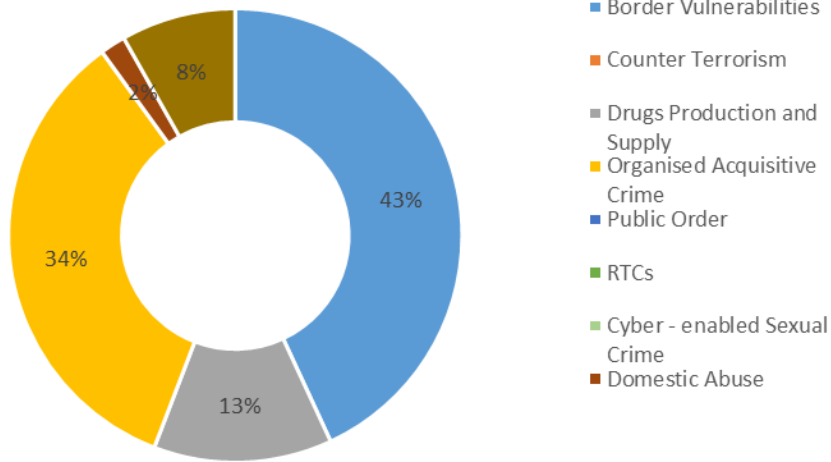
SELBY SNC

	Apr-Aug '19	% diff Same Period '18
ASB	971	-14.5%
PSW	3486	-4.0%
Missing Person	84	-21.5%
Concern Safety	820	-6.9%
Domestic Inc	240	-10.8%
KSI	67	-5.6%

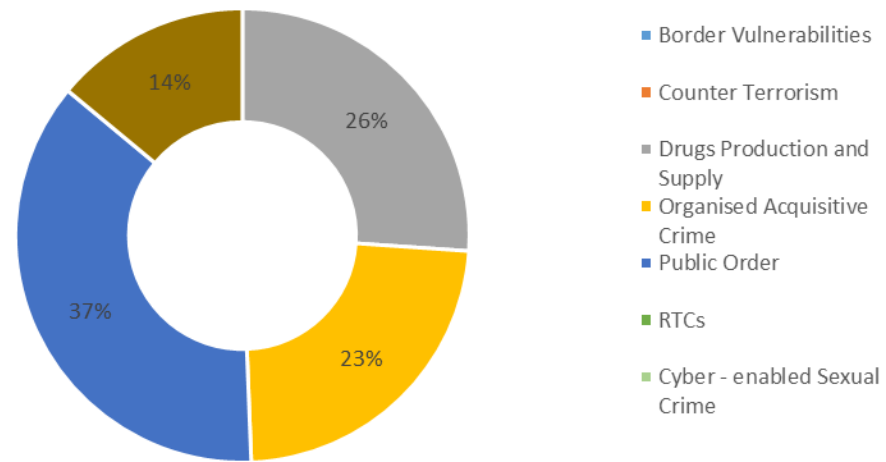
- ASB incidents continue to decrease in all SNCs
- PSW type incidents continue to be the long term increases experienced across all SNCs. However, Domestic Incident type occurrences are showing long term decreases in volume

Proactivity: How has proactive policing contributed to control strategies? (August 2019)

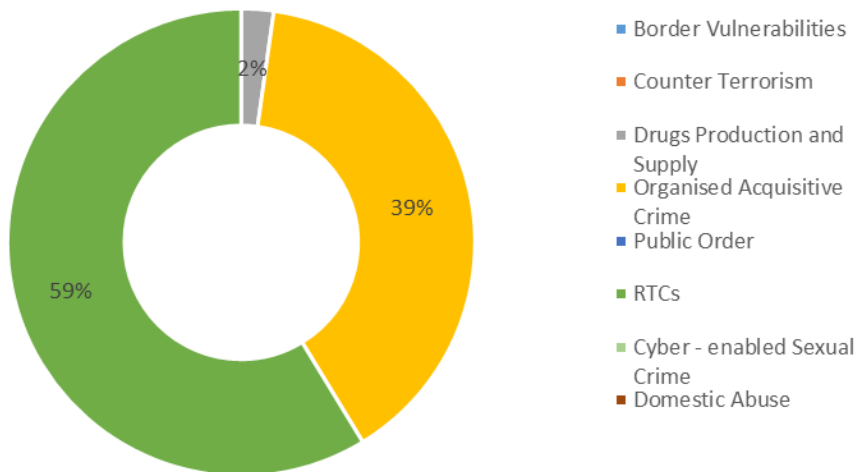
Split of 1100 hours appointed to FSU



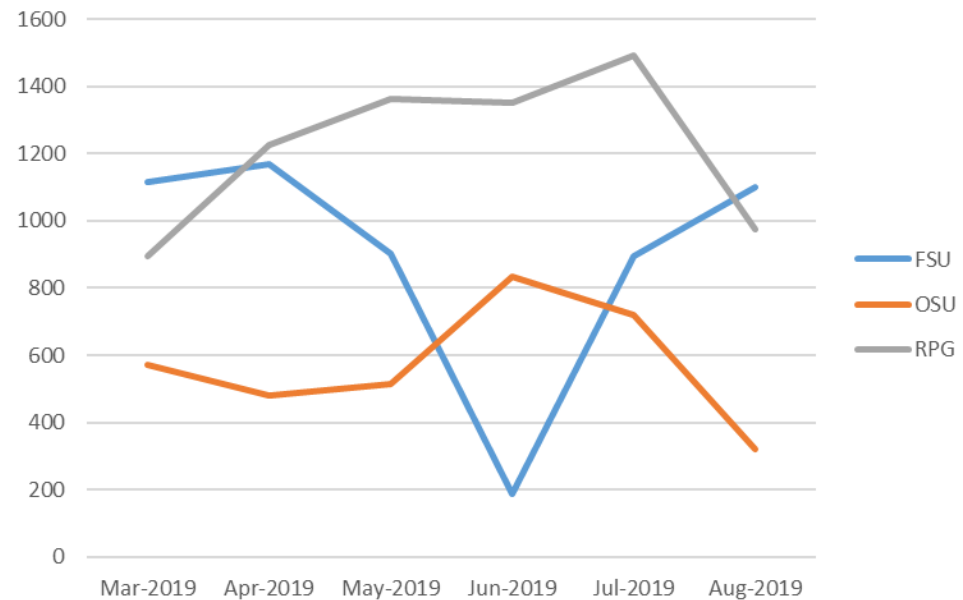
Split of 322 hours appointed to OSU



Split of 973 hours appointed to RPG

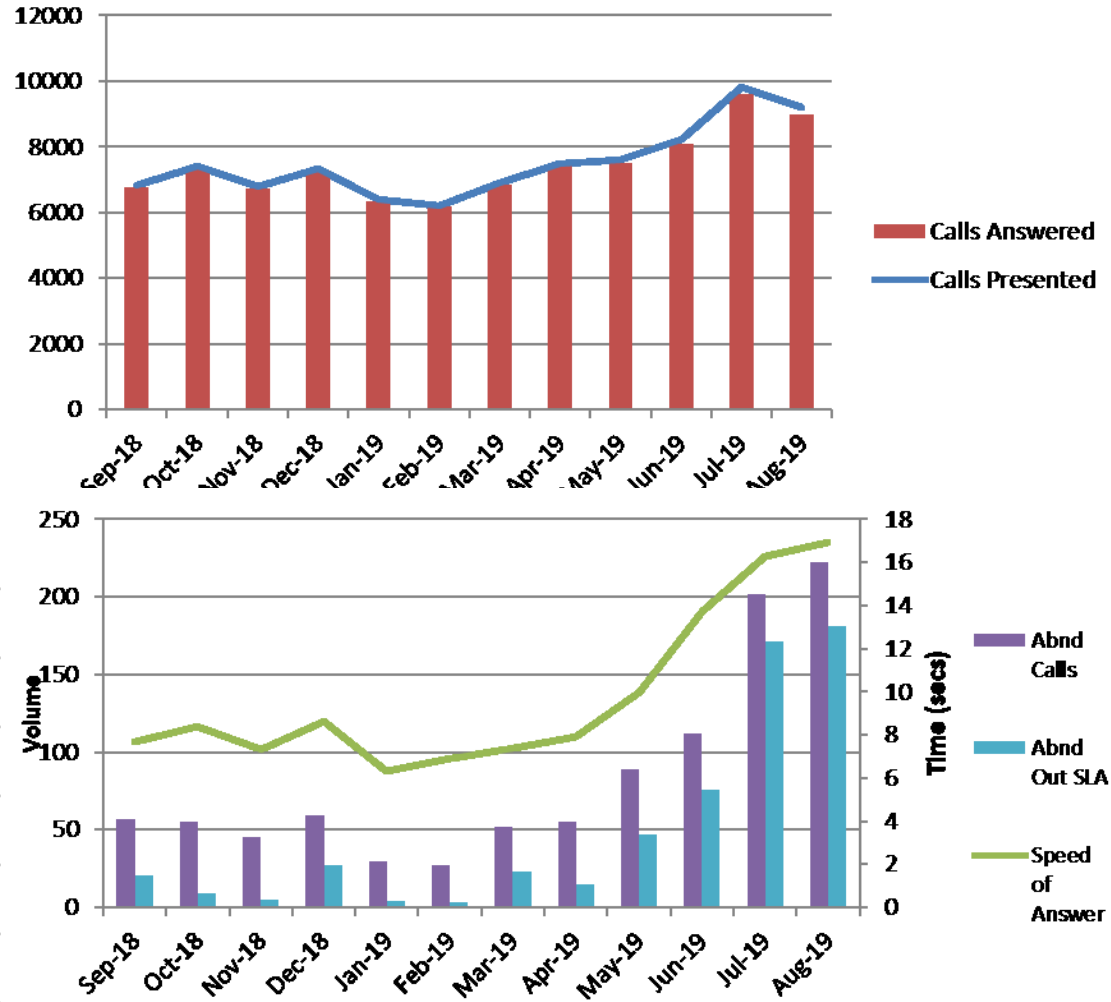


Last 6 months Proactive Hours undertaken



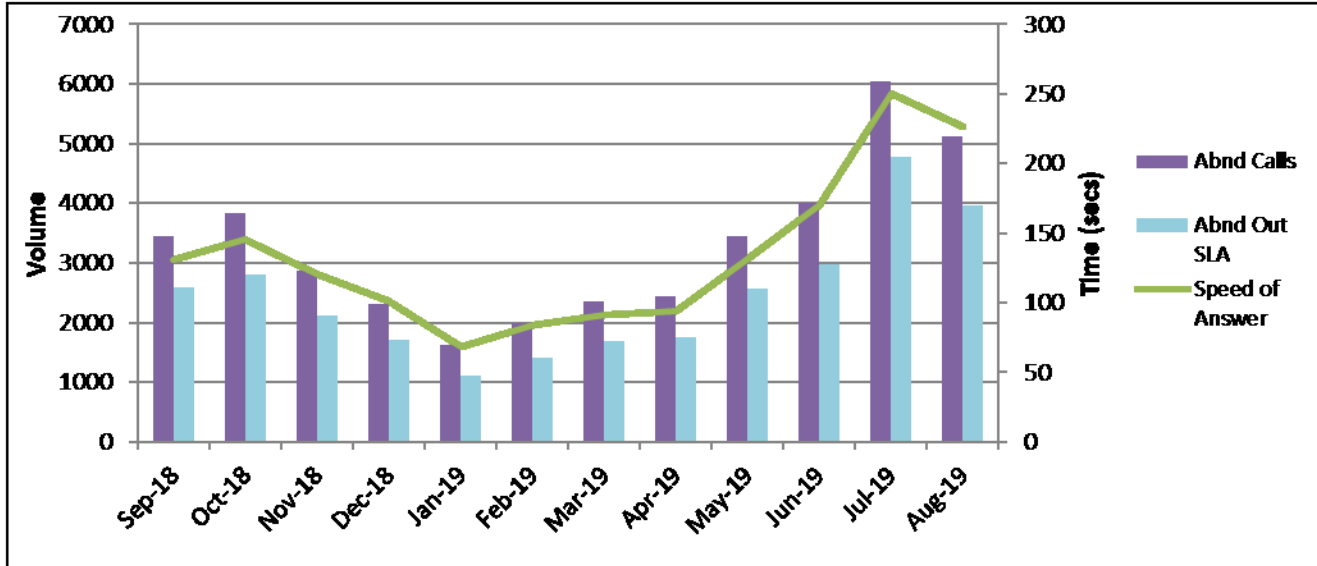
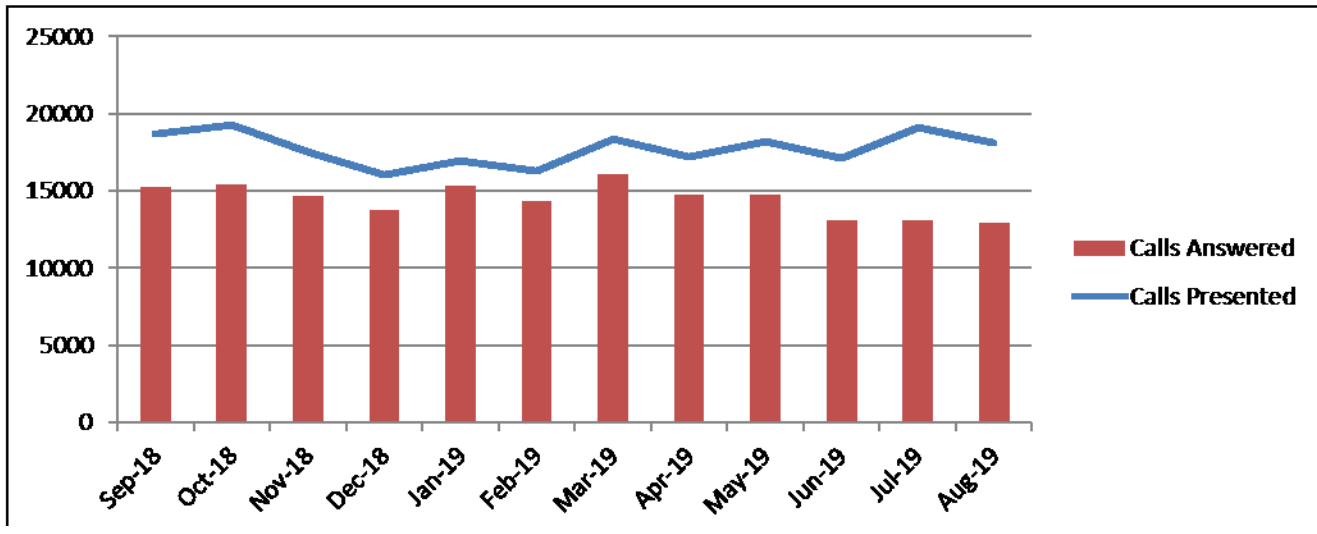
Initial Contact – 999 (12 month rolling data)

Month	Calls Presented	Calls Answered	Speed of Answer	Abnd Calls
Sep-18	6811	6754	7.7	57
Oct-18	7413	7358	8.4	55
Nov-18	6788	6743	7.3	45
Dec-18	7340	7281	8.6	59
Jan-19	6383	6353	6.3	30
Feb-19	6203	6176	6.9	27
Mar-19	6888	6836	7.4	52
Apr-19	7494	7439	7.9	55
May-19	7598	7509	10	89
Jun-19	8218	8106	13.7	112
Jul-19	9826	9624	16.3	202
Aug-19	9211	8989	16.9	222



Initial Contact - 101

Month	Calls Presented	Calls Answered	Speed of Answer	Abnd Call
Sep-18	18713	15266	131	3447
Oct-18	19280	15454	145.3	3826
Nov-18	17513	14653	120.3	2860
Dec-18	16061	13743	101.3	2318
Jan-19	16944	15327	68.5	1617
Feb-19	16308	14325	84.1	1983
Mar-19	18402	16056	91	2346
Apr-19	17235	14787	93.9	2448
May-19	18182	14744	131.9	3438
Jun-19	17093	13085	170.7	4008
Jul-19	19138	13088	250.6	6050
Aug-19	18087	12965	226.5	5122



Local Policing – Police and Crime Plan 2017-2021

Hambleton	Apr-Aug 18	Apr-Aug 19	Diff
Burglary	149	134	-10.1%
Road	2429	1681	-30.8%
Mental Health	481	501	4.2%

Scarborough	Apr-Aug 18	Apr-Aug 19	Diff
Burglary	253	257	1.6%
Drug Offences	188	185	-1.6%
ASB	2860	2314	-19.1%

Richmondshire	Apr-Aug 18	Apr-Aug 19	Diff
Drug Offences	14	25	78.6%
Burglary	54	60	11.1%
ASB	468	388	-17.1%

Ryedale	Apr-Aug 18	Apr-Aug 19	Diff
Burglary	69	67	-2.9%
Drug Offences	29	22	-24.1%
ASB	495	436	-11.9%
Road	1582	1037	-34.5%

Harrogate	Apr-Aug 18	Apr-Aug 19	Diff
Burglary	278	278	0.0%
ASB	1696	1452	-14.4%
Road	3367	1995	-40.7%
Cyber	49	88	79.6%

York	Apr-Aug 18	Apr-Aug 19	Diff
Violence	1715	1693	-1.3%
Burglary	381	364	-4.5%
ASB	3599	2958	-17.8%
Cyber	69	58	-15.9%

Craven	Apr-Aug 18	Apr-Aug 19	Diff
Burglary	149	144	-3.4%
Road	1159	869	-25.0%
Crime	975	961	-1.4%

Selby	Apr-Aug 18	Apr-Aug 19	Diff
Drugs	62	54	-12.9%
Burglary	178	262	47.2%
ASB	1136	971	-14.5%
Cyber	32	23	-28.1%

GLOSSARY

Glossary

- ASB = Anti-Social Behaviour
- CMS = Community Messaging System
- Concern Safety = Concern for Safety – includes all occurrences where there is a concern for an individual's safety or welfare
- Fraud Offences = These are not included in the crime statistics as they are not reported by forces to the Home Office. Instead these crimes are passed to Action Fraud and statistics are collated by that agency
- FSU = Firearms Support Unit
- I Grade = priority assigned by control room for an incident requiring ImmEDIATE police response
- KSI = A casualty Killed or Seriously Injured as a result of a Road Traffic Collision on a public road
- MCU = Major Crime Unit
- Miss Pers = Missing Person
- MO = Modus Operandi
- NPS = New PsychoaSubstances is the official term for Legal Highs
- NTE = Night Time Economy
- OCG = Organised Crime Group
- OSU = Operational Support Unit – a specialist unit which is deployed around the force through tactical bidding process
- OPL = Over Prescribed Limit typically the term used to describe failing a breath test
- PCSO = Police Community Support Officer
- PSW = Personal Safety and Welfare
- Resolved Outcome = A crime where an offender has been dealt with through sanction or restorative justice.
- RPG = Roads Policing Team
- RTF = Rural Task Force
- SNC = Safer Neighbourhood Command – Area of Policing attributed to
- Sus Circs = Suspicious Circumstances – includes Insecure premises and Vehicles
- TIC = Taken Into Consideration is typically where an offender admits to further offences to avoid potentially being pursued for these at a later date.