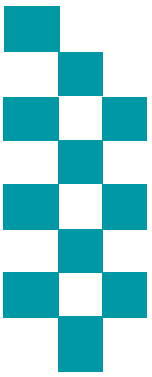


Public Accountability Meeting



Meeting Date: 28th January 2020



BE SAFE
FEEL SAFE

Agenda



Caring About the Vulnerable

Mental Health

s136 Detentions



Ambitious Collaboration

Force Overview

City Command

Coastal Command



Reinforcing Local Policing

County Command

Crime Trends

Crime Focus

ASB/PSW
Incidents

Proactive Policing

Rural Task Force



Enhancing the Customer Experience

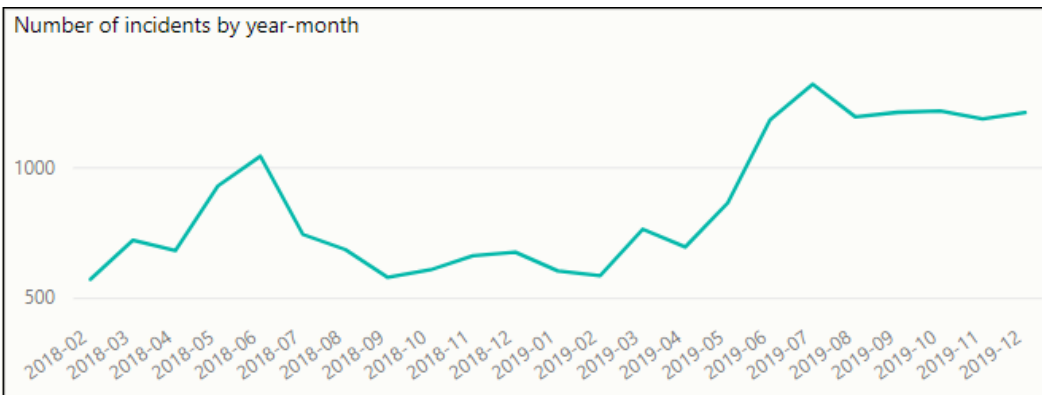
999

101

Local Priorities

Mental Health

Occurrences involving a person(s) with a mental health qualifier



- There are significant increases in occurrences with Mental Health tags in the last 8 months. This is in part due to increased tagging of these incidents, allowing for a better, more tailored approach in initial response and the change in Mental Health definition for responding officers.
- Incidents with a Mental Health tag have accounted for 12% of all incidents in the last 22 months

Incidents with highest number of Mental Health Tag (Feb '18 – Dec '19)

Description	Volume with mental health tag	% of All Type of Incidents
CONC SAFETY/TRAPPED/INJ/ILL	10202	43.1%
MISSING PERSON	1196	36.42%
DOMESTIC INCIDENT	1720	17.35%
VIOLENCE	2032	12.70%
ASB NUISANCE	1282	6.86%

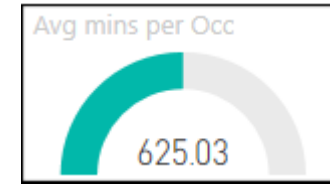
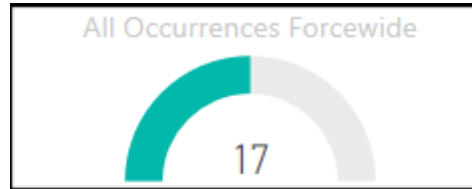
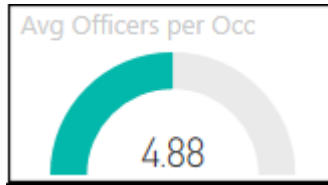
Incident data (left) relates to the initial police response where Mental health presented and was tagged on the incident

Use of police custody as a place of safety

Police custody must only be used for s136 MHA detainees in highly exceptional circumstances, e.g. genuinely unmanageable risks of resistance, aggression, violence or escape, or if also detained for an offence. We scrutinise every use of custody in these circumstances.

The below volumes have been reviewed and changed. Previously any s136 detention that occurred in custody has been counted, however, all but the below incidents, custody was not actually used as a place of safety, the incident occurred whilst in custody before the individual was transferred to a recognised Health Based Place of Safety and as such custody was never used as a Place of Safety. In these cases, the mental ill-health of the detainee was identified after their arrival at a custody suite.

s136 Detentions (Police Custody)	Mar-19	Apr-19	May-19	Jun-19	Jul-19	Aug-19	Sep-19	Oct-19	Nov-19	Dec-19
Under 18	0	0	0	0	0	0	0	0	0	0
Aged 18 or Over	0	0	0	0	0	0	0	1	1	1
Total	0	0	0	0	0	0	0	1	1	1
<i>Presented whilst in Custody and taken to HBPOS</i>	4	0	2	1	1	2	3	0	4	7

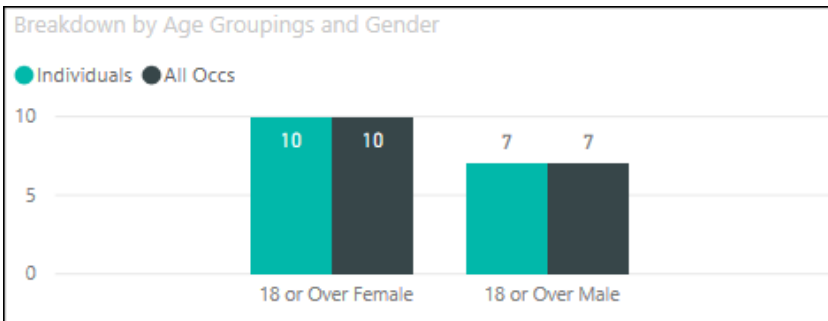


By Occurrence Type

Closing Code Desc	Occs
CONC SAFETY/TRAPPED/INJ/ILL	11
MISSING PERSON	2
DOMESTIC INCIDENT	1
NUISANCE	1
THEFT GENERAL	1
VIOLENCE	1
Total	17

- December 2019 was significantly lower in volume than the average incident volume levels previously seen
- 0 detainees required to be taken out of the county this month
- 8 incidents required Police transportation:
 - 6 following Risk assessment
 - 2 No Ambulance available within 30mins
- 59% of detentions resulted in Admission

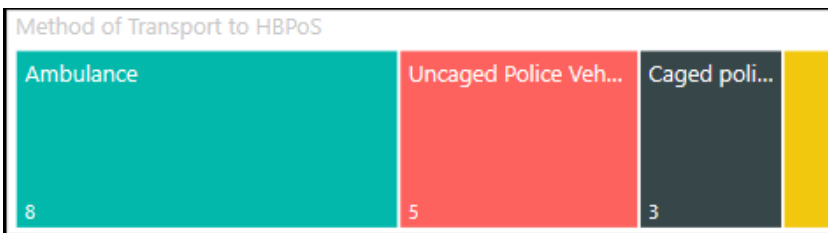
Gender/Age Breakdown and Repeat Nominals



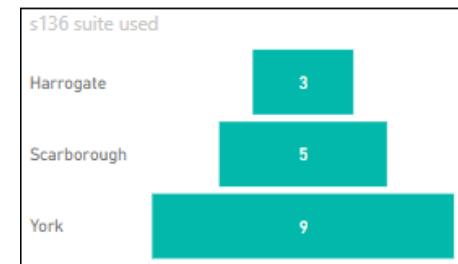
Outcomes

Outcome	Distinct Occs
Formal Admission	9
Informal admission	1
Not open to services. Returned to the community without follow up	3
Open to services. Returned to the community with follow up by current service	4
Total	17

Mode of Transport



HBPOs Usage



Force Levels (Incidents and Crimes Committed December 2019)

Count of all Incidents and type

Count of incidents

6,932

Total Crimes Committed

3640

Average Officers and Time Spent

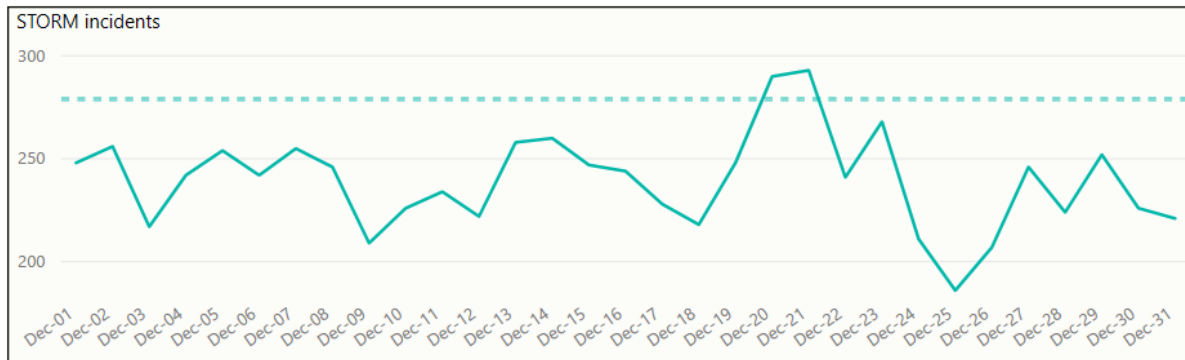
Average resources per incident

2.45

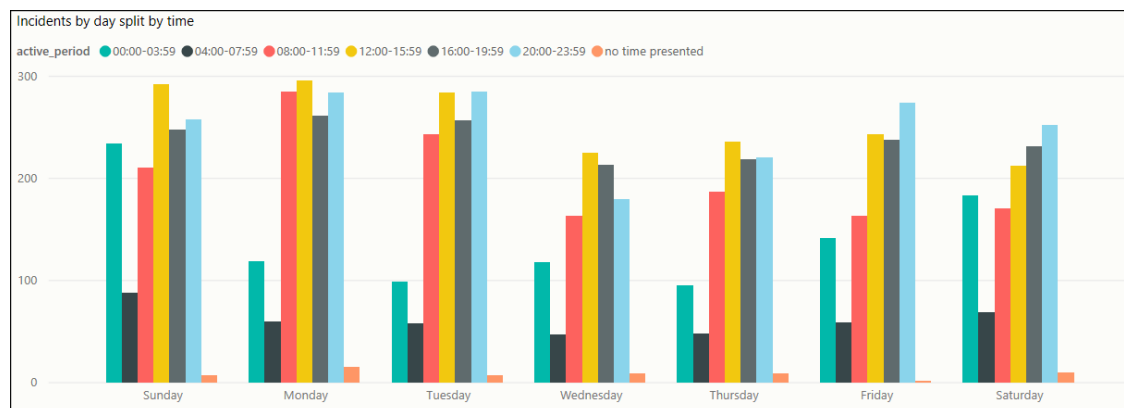
Average minutes per incident

150.90

Incident Volumes by Date



Incident Volumes by Day and Time Group



Highest Wards by volume of Crime

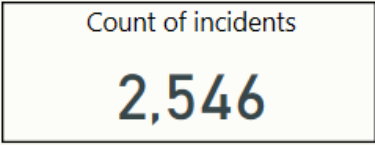
Guildhall Inner (NYP)	Low Harro...	Huntin...
219	132	93
Castle	Selby South	Westfield
159	95	80

Volume by Crime type

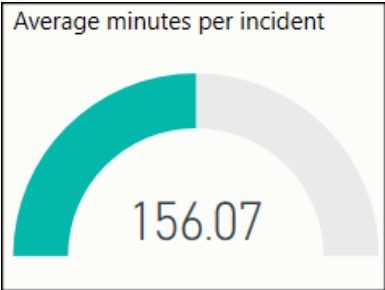
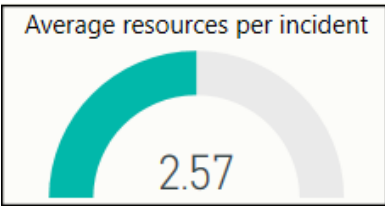
Crime	2019-12
Arson & Criminal Damage	455
Burglary	294
Drug Offences	125
Fraud	213
Misc Crimes Against Society	43
Possession Of Weapons	24
Public Order Offences	205
Robbery	18
Sexual Offences	82
Theft	707
Vehicle Offences	152
Violence Against The Person	1322
Total	3640

City Command (Incidents and Crimes Committed December 2019 – York and Selby)

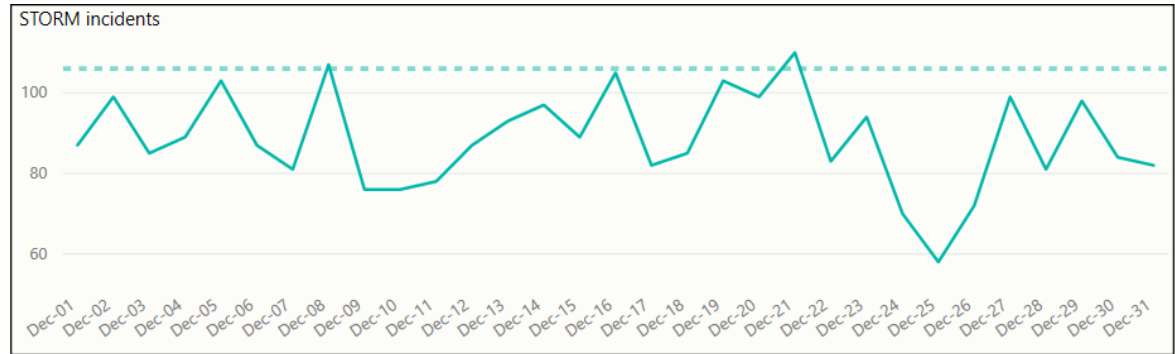
Count of all Incidents and type



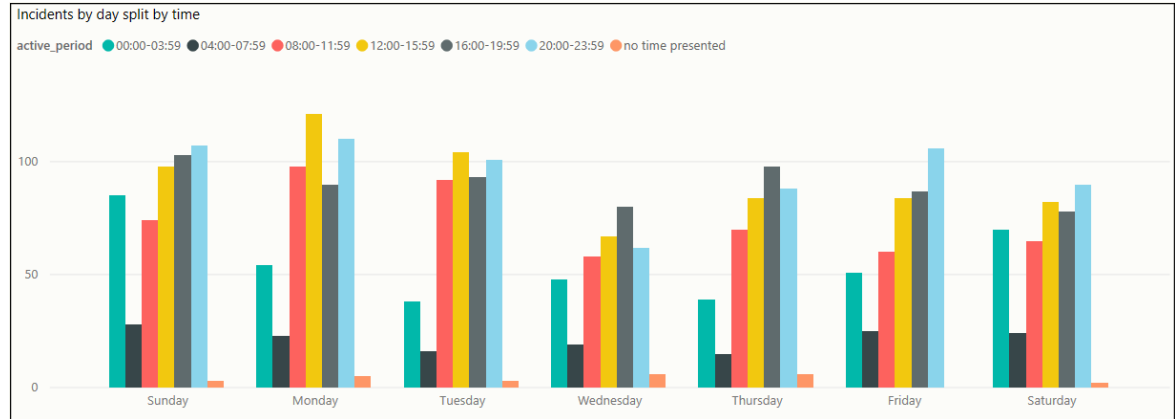
Average Officers and Time Spent



Incident Volumes by Date



Incident Volumes by Day and Time Group



Highest Wards by Crime Volume

Guildhall Inner (NYP)	Selby South	Huntington and New Ear...	Clifton
219	95	93	66
		Westfield	Heworth
		80	61

Volume by Crime type

Crime	2019-12
Arson & Criminal Damage	153
Burglary	101
Drug Offences	50
Fraud	62
Misc Crimes Against Society	14
Possession Of Weapons	5
Public Order Offences	74
Robbery	8
Sexual Offences	36
Theft	327
Vehicle Offences	65
Violence Against The Person	532
Total	1427

Coastal Command (Incidents and Crimes Committed December 2019 – Scarborough and Ryedale)

Count of all Incidents and type

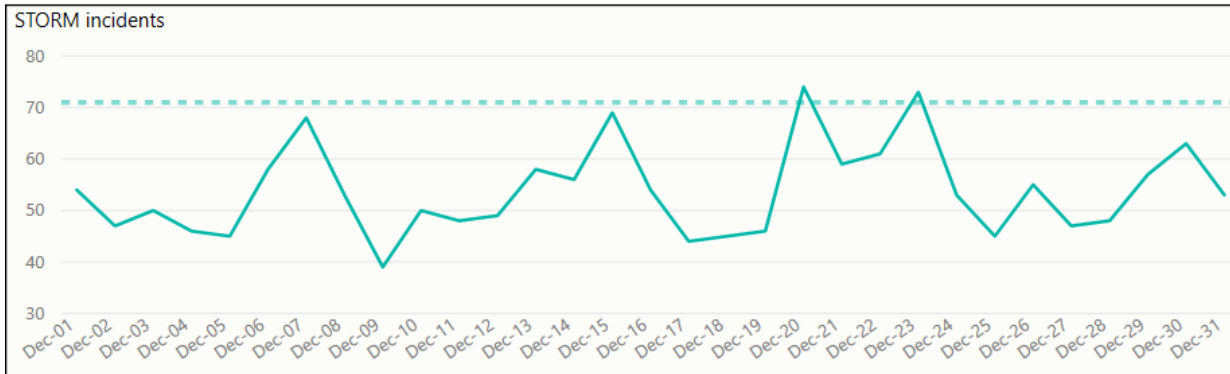
Count of incidents

1,561

Total Crimes Committed

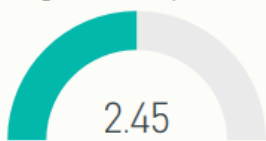
812

Incident Volumes by Date

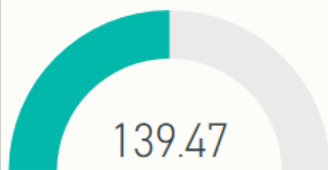


Average Officers and Time Spent

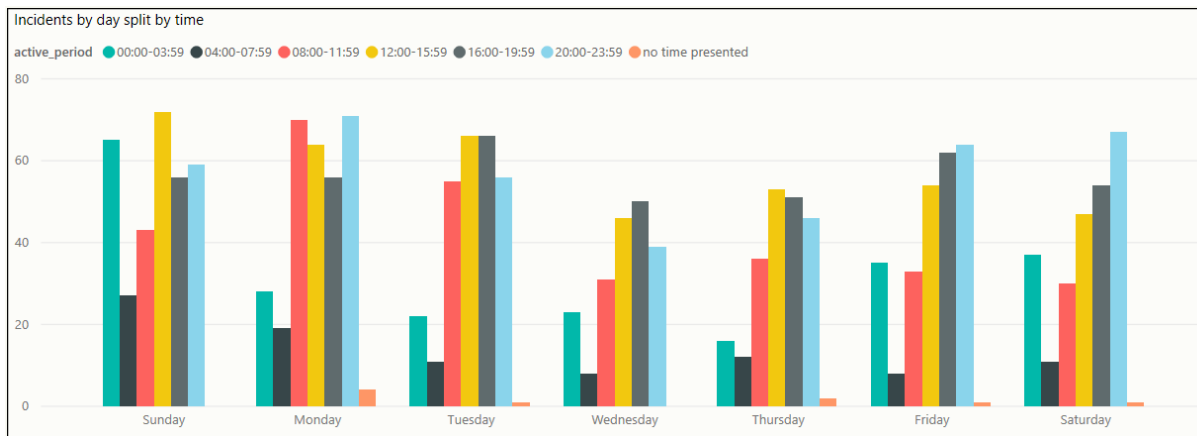
Average resources per incident



Average minutes per incident



Incident Volumes by Day and Time Group



Volume by Crime type

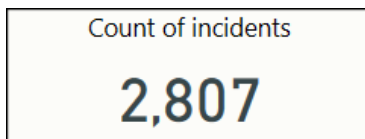
Crime	2019-12
Arson & Criminal Damage	101
Burglary	37
Drug Offences	25
Fraud	60
Misc Crimes Against Society	10
Possession Of Weapons	13
Public Order Offences	64
Robbery	2
Sexual Offences	18
Theft	118
Vehicle Offences	14
Violence Against The Person	350
Total	812

Highest Wards by Crime Volume

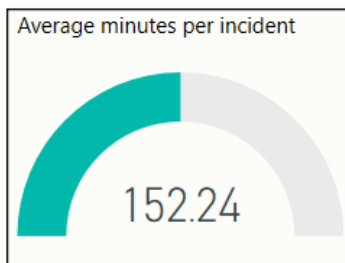
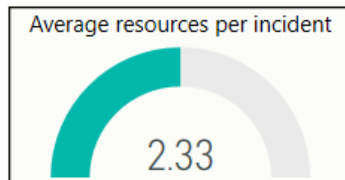
Castle	Woodlands	Eastfield	North Bay
	44	39	33
159	Central	Ramshill	Streonshalh
	42	37	31

County Command (Incidents and Crimes Committed December 2019 – Hamb, Rich, H'gate and Craven)

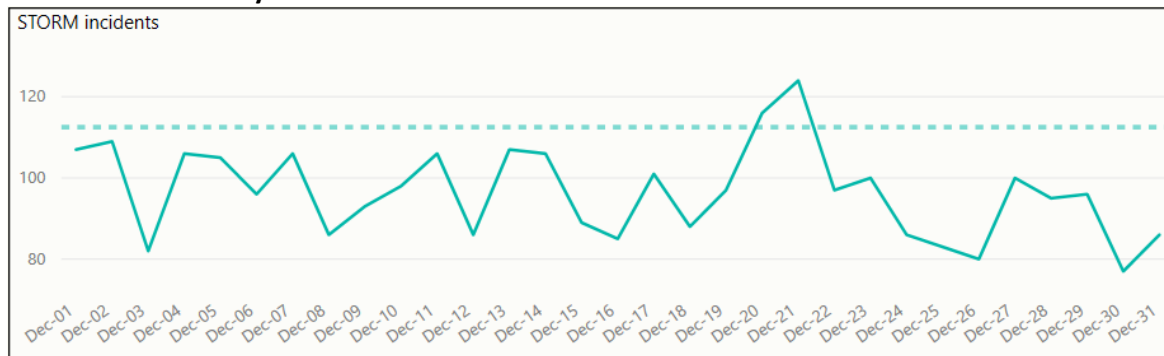
Count of all Incidents and type



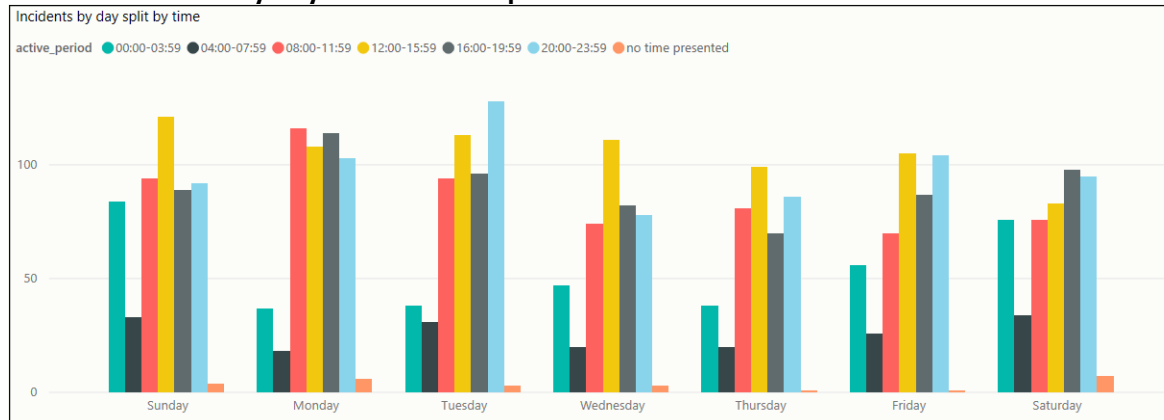
Average Officers and Time Spent



Incident Volumes by Date



Incident Volumes by Day and Time Group



Highest Wards by Crime Volume

Low Harrogate	Granby	Woodfield	New Park
	53	49	36
132	Northallerton...	High Harrog...	Skipton ...
	50	49	34

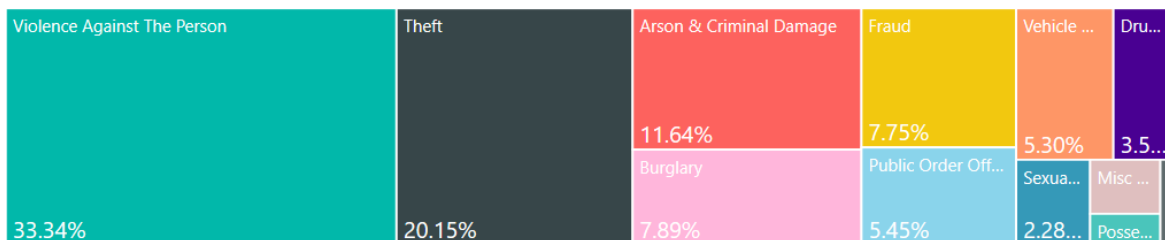
Volume by Crime type

Crime	2019-12
Arson & Criminal Damage	200
Burglary	155
Drug Offences	50
Fraud	91
Misc Crimes Against Society	18
Possession Of Weapons	6
Public Order Offences	67
Robbery	8
Sexual Offences	27
Theft	262
Vehicle Offences	73
Violence Against The Person	440
Total	1397

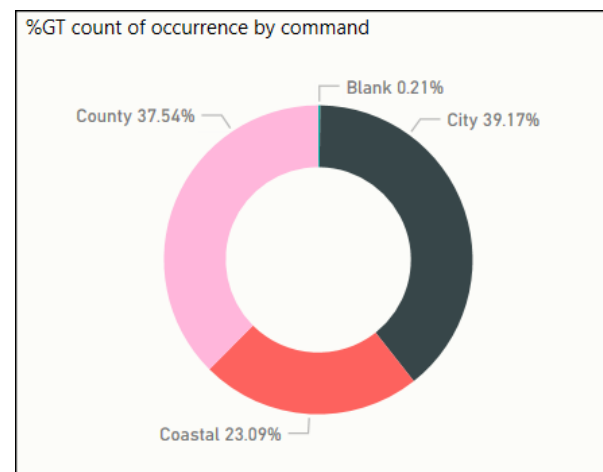
CRIME – Financial Year to Date Comparison (Crimes Committed)

	Apr-Dec '17	Apr-Dec '18	Apr-Dec '19	% Diff (2019 compared 2018)
Arson & Criminal Damage	4531	4686	4252	-9.3%
Burglary	2816	3008	2896	-3.7%
Drug Offences	1131	1208	1212	0.3%
Misc Crimes Against Society	586	551	616	11.8%
Possession Of Weapons	172	229	245	7.0%
Public Order Offences	1160	1766	2270	28.5%
Robbery	121	173	177	2.3%
Sexual Offences	886	965	964	-0.1%
Theft: All Other Theft	3301	3671	3393	-7.6%
Theft: Bicycle Theft	932	1001	840	-16.1%
Theft: Shoplifting	3570	3362	3416	1.6%
Theft: Theft From Person	321	396	391	-1.3%
Vehicle Offences	1816	1833	1752	-4.4%
Violence Against The Person	8290	10661	11906	11.7%
Grand Total	29633	33510	34330	2.4%

% Split of Crime Types



% split of all crimes by Command



CRIME FOCUS – Financial Year To Date

HAM & RICH SNC

	Apr-Dec '19	% diff Same Period '18
CRIME	4176	7.0%
Burglary	341	-10.0%
Theft: Other	495	7.1%
Theft: Shoplifting	328	9.3%
Criminal Damage	588	-3.1%
Drug Offences	133	41.5%
Violence Offences	1518	14.0%

SCAR & RYE SNC

	Apr-Dec '19	% diff Same Period '18
CRIME	8666	4.9%
Burglary	534	-6.5%
Theft: Other	778	-11.3%
Theft: Shoplifting	753	0.0%
Criminal Damage	1136	-6.0%
Drug Offences	322	-6.1%
Violence Offences	3397	10.4%

CRAVEN SNC

	Apr-Dec '19	% diff Same Period '18
CRIME	1705	0.9%
Burglary	251	-4.2%
Theft: Other	178	-20.2%
Theft: Shoplifting	150	15.4%
Criminal Damage	181	-11.3%
Drug Offences	51	-8.9%
Violence Offences	538	22.8%

YORK SNC

	Apr-Dec '19	% diff Same Period '18
CRIME	10035	-0.3%
Burglary	669	-14.2%
Theft: Other	961	-8.2%
Theft: Shoplifting	1345	13.6%
Criminal Damage	1084	-12.2%
Drug Offences	370	-0.5%
Violence Offences	3241	4.8%

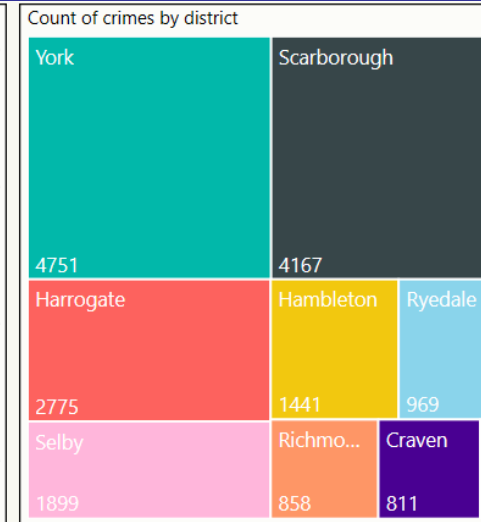
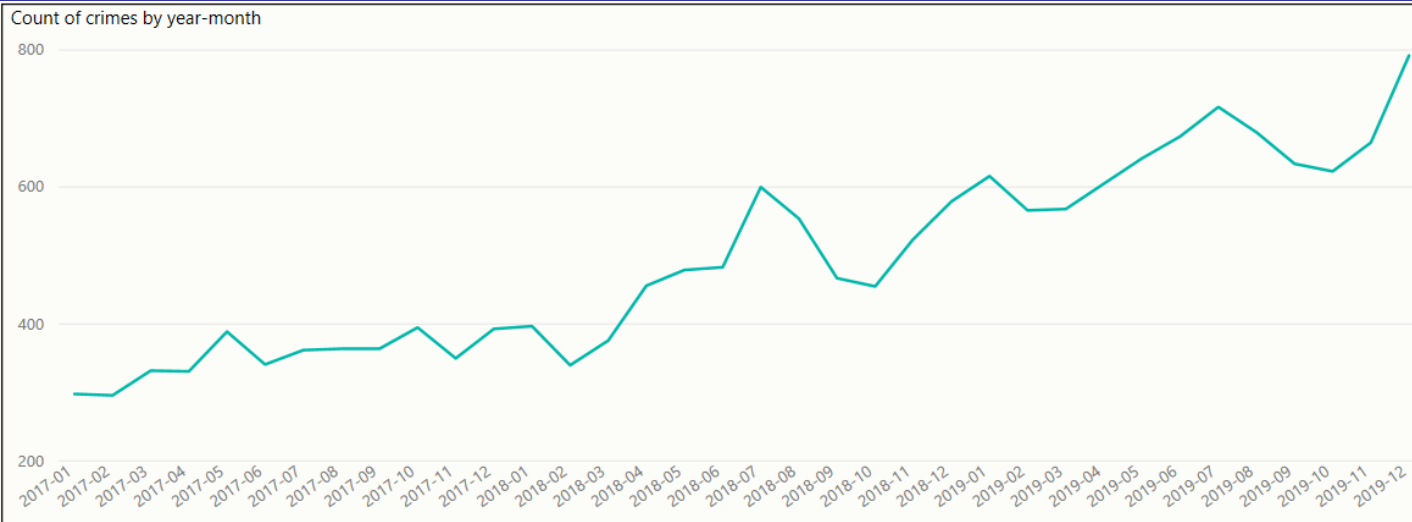
HARROGATE

	Apr-Dec '19	% diff Same Period '18
CRIME	6385	2.8%
Burglary	672	1.1%
Theft: Other	682	4.6%
Theft: Shoplifting	600	-9.4%
Criminal Damage	875	-7.1%
Drug Offences	234	4.0%
Violence Offences	2011	19.2%

SELBY SNC

	Apr-Dec '19	% diff Same Period '18
CRIME	3301	-0.1%
Burglary	422	22.0%
Theft: Other	296	-26.7%
Theft: Shoplifting	234	-28.0%
Criminal Damage	386	-20.4%
Drug Offences	100	-10.7%
Violence Offences	1175	15.8%

CRIME FOCUS – Domestic Abuse (Last 3 years)



Crime	Total
Arson & Criminal Damage	1303
Burglary	139
Drug Offences	6
Fraud	79
Misc Crimes Against Society	146
Possession Of Weapons	12
Public Order Offences	505
Robbery	28
Sexual Offences	590
Theft	356
Vehicle Offences	73
Violence Against The Person	14470
Total	17707

- There has been a year on year increase in the volume of Domestic Abuse related recorded crimes since 2016/17. There was a 43.4% increase in the volume of Domestic Abuse recorded crimes between 2017/18 and 2018/19, from 4,402 to 6,311. The volume of Domestic Abuse related non-crime occurrences has decreased by 2.3% between 2017/18 and 2018/19, from 4,395 to 4,295.
- Cases spike at weekends and in the summer months. The majority of reports consist of violence, either with or without injury. Increases are being seen across most age groups but most noticeably in the 16-18 range and also child on parent offending. The changes to the definition and scope of domestic abuse have in part contributed to the increase. For example, the reduction of the lower age limit from 18 to 16, and the introduction of offences of controlling or coercive behaviour have affected recording levels.
- Domestic abuse related stalking and harassment is also prevalent with continued frequent contact by telephone or online continuing the controlling elements of the former relationship after it has ended. Increases are also being noted in the reporting of non-recent offending in a domestic setting but this remains less than 10%. There is no longer a time limit on abuse evidence, which previously stood at five years. Additionally, the range of documents accepted as evidence of abuse has been widened to include statements from domestic violence support organisations and housing support officers. It has been noted that investigations are tending to deal with multiple crime reports as non-recent crimes are increasingly reported as part of current investigations.

ANTI SOCIAL BEHAVIOUR, PUBLIC SAFETY & WELFARE AND CASUALTIES FROM ROAD TRAFFIC COLLISIONS THAT ARE KILLED & SERIOUSLY INJURED

HAM & RICH SNC

	Apr-Dec '19	% diff Same Period '18
ASB	1873	-19.8%
PSW	9487	6.5%
Missing Person	214	10.9%
Concern Safety	1986	1.8%
Domestic Inc	465	-4.3%
KSI	250	2.5%

SCAR & RYE SNC

	Apr-Dec '19	% diff Same Period '18
ASB	4511	-14.9%
PSW	15499	0.0%
Missing Person	590	7.7%
Concern Safety	3807	-4.7%
Domestic Inc	997	-18.0%
KSI	268	-10.4%

CRAVEN SNC

	Apr-Dec '19	% diff Same Period '18
ASB	666	-27.3%
PSW	3425	1.6%
Missing Person	76	-3.8%
Concern Safety	791	-6.6%
Domestic Inc	140	-17.2%
KSI	107	-24.6%

HARROGATE

	Apr-Dec '19	% diff Same Period '18
ASB	3112	-9.2%
PSW	11998	3.3%
Missing Person	411	-19.4%
Concern Safety	2577	-5.3%
Domestic Inc	614	-11.7%
KSI	278	-3.8%

YORK SNC

	Apr-Dec '19	% diff Same Period '18
ASB	5018	-15.5%
PSW	17273	3.3%
Missing Person	488	-8.6%
Concern Safety	3978	-7.9%
Domestic Inc	864	-22.1%
KSI	365	0.0%

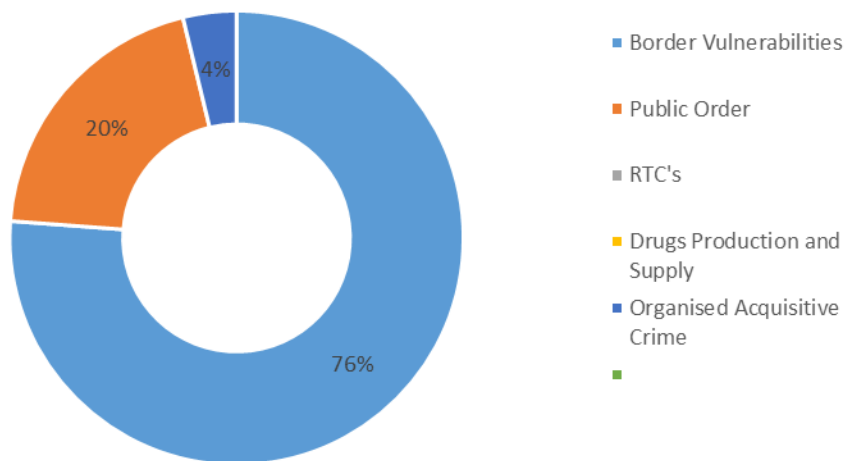
SELBY SNC

	Apr-Dec '19	% diff Same Period '18
ASB	1600	-16.6%
PSW	6113	-2.4%
Missing Person	153	-5.0%
Concern Safety	1333	-8.0%
Domestic Inc	427	-7.0%
KSI	134	6.3%

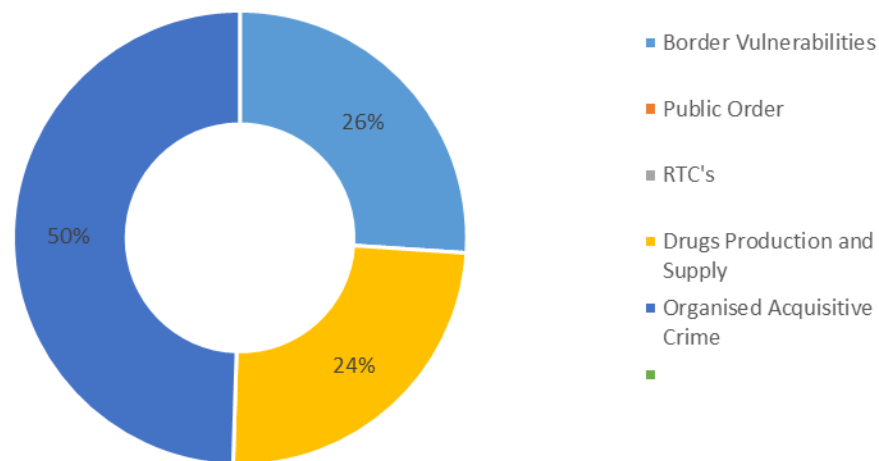
- ASB incidents continue to decrease in all SNCs
- PSW type incidents continue to be the long term increases experienced across all SNCs. However, Domestic Incident type occurrences are showing long term decreases in volume

Proactivity: How has proactive policing contributed to control strategies? (December 2019)

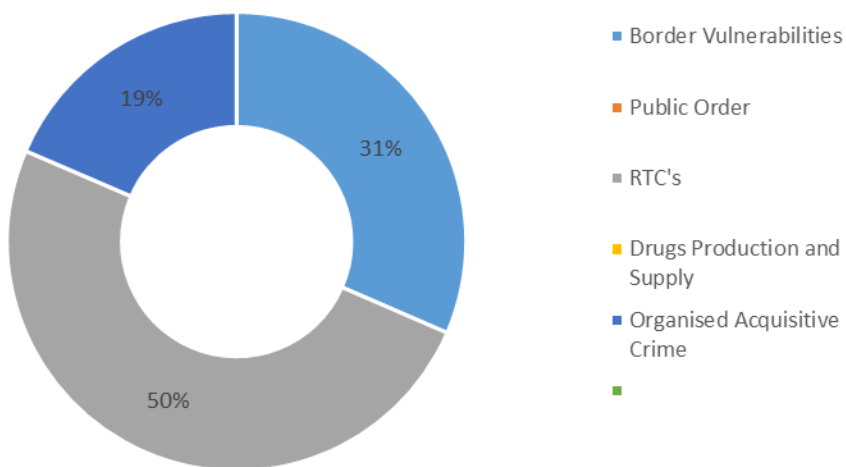
Split of 315 hours appointed to FSU



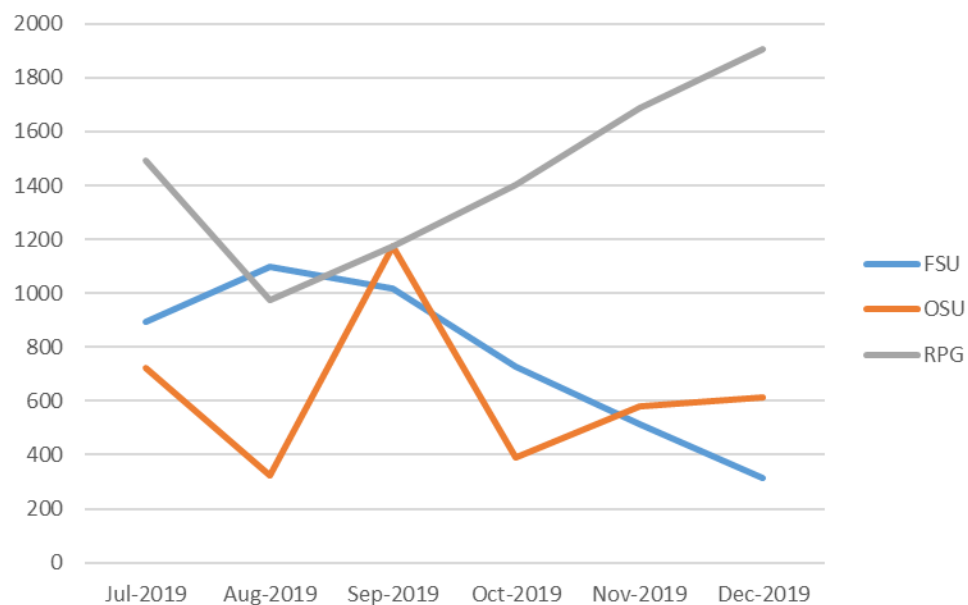
Split of 614 hours appointed to OSU



Split of 1904 hours appointed to RPG



Last 6 months Proactive Hours undertaken



Rural Task Force

Caring for the Vulnerable

- “Down on the Farm” developed in collaboration with NHS Tees, Esk, Wear Valley Trust, Yorkshire Agricultural Society, NFU, NYCC, to increase self-referrals and awareness of mental health support and intervention available to those suffering with mental health issues in rural communities .
- Rural Vulnerability forum being developed to address concerns about various aspects of vulnerability in the rural community, and how support can be given to rural victims who fall short of the threshold for support by Victim Support.
- Training around domestic abuse was delivered to RSPCA partners and was well received. This may lead to a roll out of similar training; nationally to the RSPCA, to other relevant partners, and on other areas of vulnerability.
- Op Woollen, Op Woodchip and Op Crucible aim to provide proactive prevention advice to farms, businesses and historic assets at risk.
- Property Marking Events are regularly held to provide reassurance and a deterrent against theft.

Ambitious Collaboration

- National days of action on rural crime have been agreed for 2020. NE Region activity coordinated by NYP, including activity from all seven NE forces, and agencies including the RSPCA, Environment Agency, Angling Trust and Natural England.
- Operation Checkpoint will take place with seven other forces, and supported by Proactive Policing, NPT and Volunteers in NYP.
- Local meetings with neighbouring forces occur monthly between PCs / PCSOs on area, and neighbouring force NPTs, to share intelligence and operational activity.
- Op Owl conducted on the weekend of 21st / 22nd September with gamekeepers, NYMMO, NYMNPA, YDNPA, RSPB, RSPCA, raising awareness on bird crime. NYP coordinated this nationally which involved 26 forces, resulting in over 7.5million social media interactions in the weekend. Dates for Op Owl have been agreed for 2020.
- Op Galileo is a national operation to tackle poaching, which involves collaboration with 12 other forces affected by poaching. This has developed a national plan to looking at prevention, intelligence and enforcement opportunities.
- Work ongoing with partners to disrupt criminal activity of OCGs especially Existence, involving National Food Crime Unit and Trading Standards.

Reinforcing Local Policing

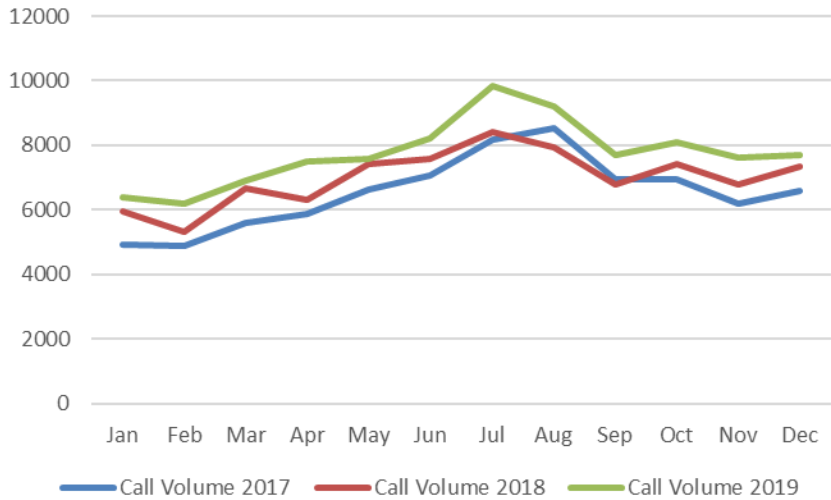
- Identify and support local priorities including proactive patrol, in particular in response to recent issues in all areas of NYP.
- Op Extractor is an ongoing OCG management into group committing rural burglaries in the north of county. Recent arrests have been made, and prison visits are due to be conducted.
- Op Existence investigation into livestock theft and subsequent sale, OCG management and working with partners such as NFCU to tackle OCG. Recent arrests have been made in regards to this group.
- Further arrests have been made in Cleveland, South Yorkshire and West Yorkshire recently, with officers proactively following up enquiries rather than waiting for neighbouring forces to act on information. This has also resulted in stolen property including quad bikes, motor bikes and agricultural equipment being returned to owners.

Enhancing Customer Experience

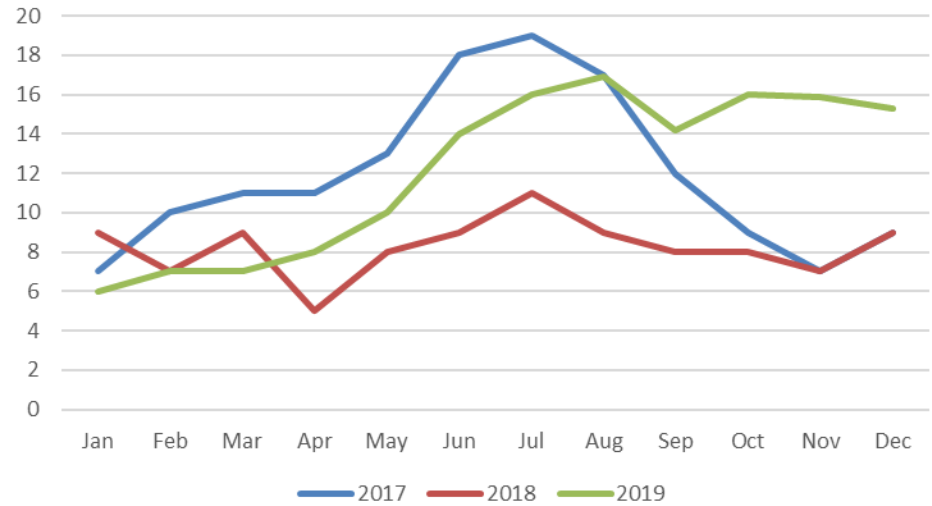
- Mobile Rural Watches are now established in all districts of North Yorkshire, their activity being collated under Op Harvester. An event was held on 16th October in Thirsk to train and update some of the 200+ mobile rural watch PSV’s. WhatsApp is being used to support these groups and has been successful in both gathering intelligence and providing reassurance to communities. This will soon be across all Watch schemes.
- Numerous local events are still being attended on area, ranging from shows, to local marts, to farm open days, enabling contact, engagement with, and information flow between the tam and rural public. Recent events attended include Farm Open days, York Agri Mart and local shows.
- Internal SharePoint and Intranet sites are up and running to communicate the work of RTF to police colleagues.

Initial Contact – 999

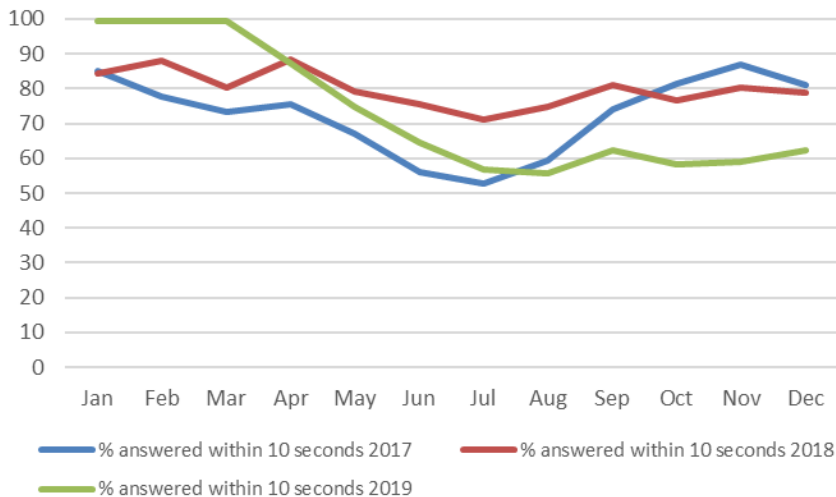
999 Call volumes



Average Speed of Answer



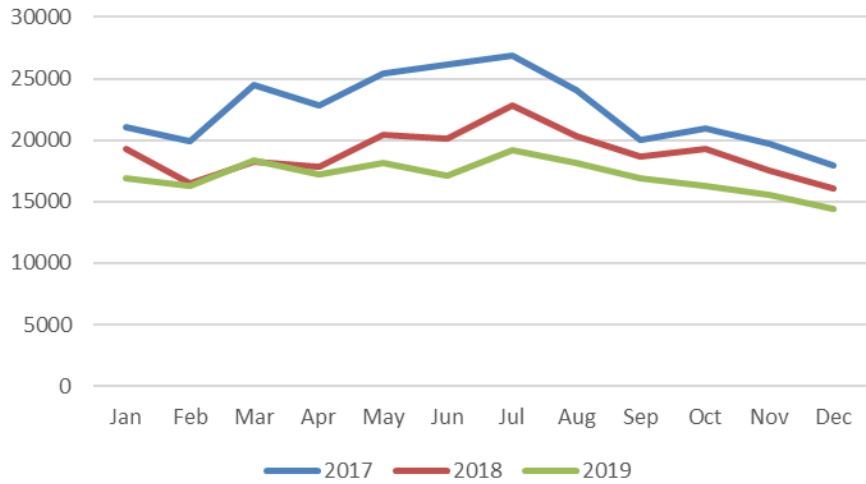
% answered within 10 seconds



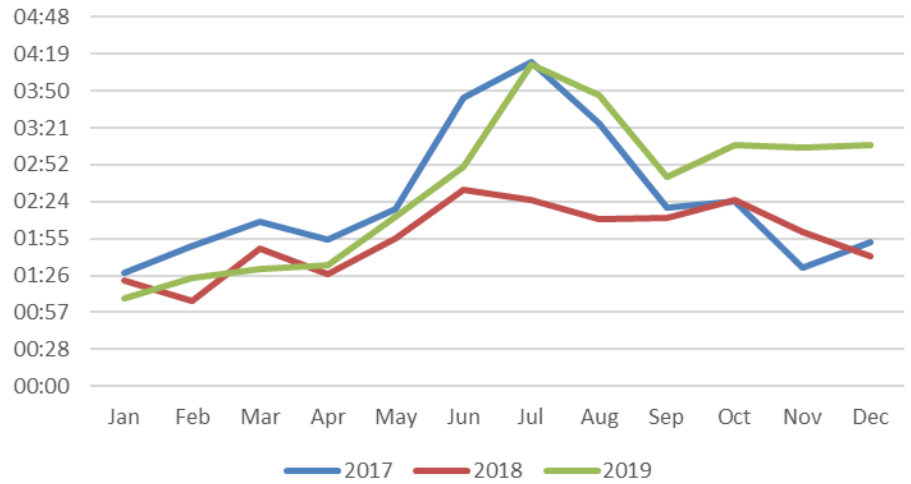
- 4.94% increase from December 2018 in line with national increase of 5.14%
- 16.97% increase on 2017
- Highest volume of 999 calls in any December since 2009
- National increase for calendar year 2019 of 7%

Initial Contact - 101

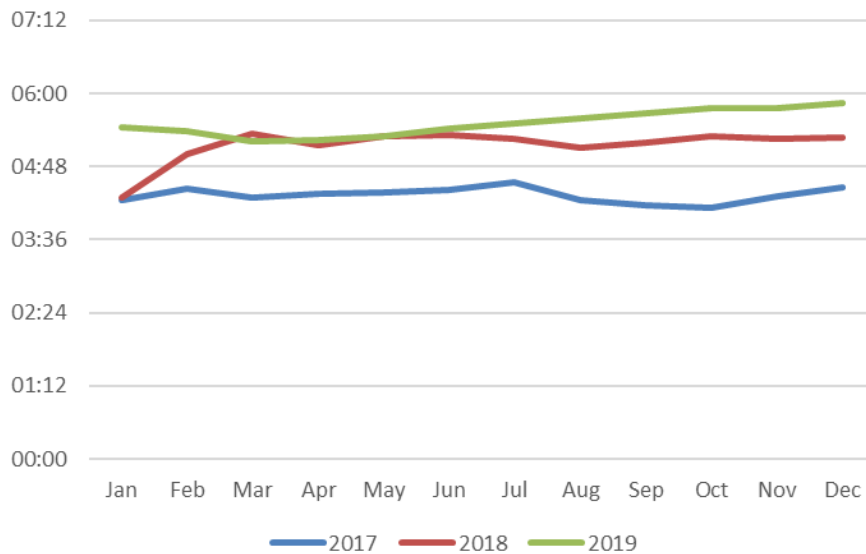
Call Volume



Average Speed of Answer



Average Call Duration



- 7% decrease in volume since November 2019
- 11% decrease in national 101 volumes since November 2019
- 10.75% national decrease since December 2018
- 10.53% decrease for the calendar year 2018-2019

Local Policing – Police and Crime Plan 2017-2021

Hambleton	Apr-Dec 18	Apr-Dec 19	Diff
Burglary	287	220	-23.3%
Road	4249	3324	-21.8%
Mental Health	979	1293	24.3%

Scarborough	Apr-Dec 18	Apr-Dec 19	Diff
Burglary	442	425	-3.8%
Drug Offences	284	291	2.5%
ASB	4517	3809	-15.7%

Richmondshire	Apr-Dec 18	Apr-Dec 19	Diff
Drug Offences	20	42	110.0%
Burglary	92	121	31.5%
ASB	730	610	-16.4%

Ryedale	Apr-Dec 18	Apr-Dec 19	Diff
Burglary	129	109	-15.5%
Drug Offences	59	31	-47.5%
ASB	782	702	-10.2%
Road	2594	2141	-17.5%

Harrogate	Apr-Dec 18	Apr-Dec 19	Diff
Burglary	665	672	1.1%
ASB	3428	3112	-9.2%
Road	7015	5181	-26.1%
Cyber	94	117	24.5%

York	Apr-Dec 18	Apr-Dec 19	Diff
Violence	3092	3241	4.8%
Burglary	780	669	-14.2%
ASB	5937	5018	-15.5%
Cyber	125	167	33.6%

Craven	Apr-Dec 18	Apr-Dec 19	Diff
Burglary	262	251	-4.2%
Road	1984	1691	-14.8%
Crime	1689	1705	0.9%

Selby	Apr-Dec 18	Apr-Dec 19	Diff
Drugs	112	100	-10.7%
Burglary	346	422	22.0%
ASB	1918	1600	-16.6%
Cyber	57	69	21.1%

GLOSSARY

Glossary

- ASB = Anti-Social Behaviour
- CMS = Community Messaging System
- Concern Safety = Concern for Safety – includes all occurrences where there is a concern for an individual's safety or welfare
- Fraud Offences = These are not included in the crime statistics as they are not reported by forces to the Home Office. Instead these crimes are passed to Action Fraud and statistics are collated by that agency
- FSU = Firearms Support Unit
- I Grade = priority assigned by control room for an incident requiring ImmEDIATE police response
- KSI = A casualty Killed or Seriously Injured as a result of a Road Traffic Collision on a public road
- MCU = Major Crime Unit
- Miss Pers = Missing Person
- MO = Modus Operandi
- NPS = New PsychoaSubstances is the official term for Legal Highs
- NTE = Night Time Economy
- OCG = Organised Crime Group
- OSU = Operational Support Unit – a specialist unit which is deployed around the force through tactical bidding process
- OPL = Over Prescribed Limit typically the term used to describe failing a breath test
- PCSO = Police Community Support Officer
- PSW = Personal Safety and Welfare
- Resolved Outcome = A crime where an offender has been dealt with through sanction or restorative justice.
- RPG = Roads Policing Team
- RTF = Rural Task Force
- SNC = Safer Neighbourhood Command – Area of Policing attributed to
- Sus Circs = Suspicious Circumstances – includes Insecure premises and Vehicles
- TIC = Taken Into Consideration is typically where an offender admits to further offences to avoid potentially being pursued for these at a later date.

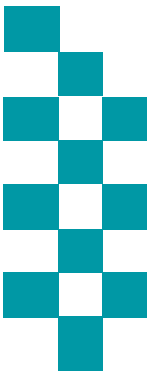
Public Accountability Meeting

Part b) People



Reporting Period: As at end of December 2019

NB: Statistics remain provisional and subject to change



BE SAFE
FEEL SAFE

HR OVERVIEW

Police Officers

Police Officer	Apr-19	May-19	Jun-19	Jul-19	Aug-19	Sep-19	Oct-19	Nov-19	Dec-19	Jan-20	Feb-20	Mar-20	Apr-20
Officer Long-term FTE Target	1450	1450	1450	1450	1450	1450	1450	1450	1450	1450	1450	1450	1450
Actual/ Projected Officer Numbers (includes recruitment)	1,380.88	1,378.60	1,394.28	1,414.90	1,408.81	1416.93	1434.38	1432.15	1455.66	1449.58	1464.15	1485.15	1502.15

The above figures have been amended to include the Officer FTE Budget for the month after vacancy factor and also what the projected numbers are for the rest of the financial year (figures in shaded boxes).

The actual number of Officers has decreased by 6.08 FTE from the previous month. The 7 FTE leavers are broken down to 4 retirements and 3 resignations. The number of starters is higher than projected (1 Transferee). The number of leavers is slightly less than that projected.

The next intake of Student Officers is planned for January 2020. Student Officer intakes have been amended as part of Operation Uplift, with an additional intake in March 2020. The next intake of transferees is planned for February 2020, with further intakes throughout the year.

PCSO

PCSO	Apr-19	May-19	Jun-19	Jul-19	Aug-19	Sep-19	Oct-19	Nov-19	Dec-19	Jan-20	Feb-20	Mar-20	Apr-20
PCSO Long-term FTE Target	200	220	220	220	220	220	220	220	220	220	220	220	220
Actual/Projected PCSO Numbers (includes recruitment)	183.37	183.39	178.33	188.31	186.00	184.04	176.26	203.28	197.81	194.28	224.86	221.86	219.86

The actual number of PCSOs has decreased by 3.53 FTE, 2.54 FTE resigned.

The next intake of PCSOs is scheduled for January 2019.

HR OVERVIEW

Staff

BUDGET:	Apr-19	May-19	Jun-19	Jul-19	Aug-19	Sep-19	Oct-19	Nov-19	Dec-19	Jan-20	Feb-20	Mar-20	Apr-20
OPFCC	11.00												
Project Staff (incl Agency)	3.00												
Commissioned Services	11.8												
Corporate Services	202.8												
Chief Constable	920.8												
Total Staff FTE Budget for the month (after vacancy factor)	1149.5												
ACTUAL:													
OPFCC	12.10	12.10	11.10	11.10	9.61	7.60	7.61	9.60	9.60	9.61			
Project Staff (incl Agency)	6.00	6.00	6.00	6.00	6.00	7.00	9.00	5.00	5.00	5.00			
Commissioned Services	13.63	13.41	13.41	13.03	12.45	13.44	15.45	14.94	14.05	14.05			
Corporate Services	187.97	185.39	176.53	178.48	176.47	182.80	183.15						
Chief Constable	879.92	875.01	870.03	864.18	858.99	819.91	815.47	1018.16	1015.82	1013.02			
Total Staff against budget FTE	1099.62	1091.91	1077.07	1072.79	1063.51	1030.75	1030.68	1047.70	1044.47	1041.69			
Permanent Staff FTE	1039.46	1029.98	1016.05	1008.01	1006.71	979.74	978.06	990.44	986.59	981.18			
Temporary Staff FTE (not including agency)	53.67	54.45	53.53	58.28	49.31	44.51	44.12	44.51	43.72	46.36			
Agency Staff FTE	6.49	7.49	7.49	6.49	7.49	6.49	8.49	12.74	14.15	14.15			
Total Staff against budget FTE	1099.62	1091.92	1077.07	1072.78	1063.51	1030.74	1030.67	1047.69	1044.47	1041.69			

The Staff Budget has been adjusted for 2017/ 2018. The budget is managed on a monthly basis depending upon business requirements and therefore is likely to change during the financial year.

The projections remain static as the majority of current recruitment is internal; therefore we are unlikely to see a significant increase in staff numbers over all.

Corporate Services has now been added into Chief Constable. All rows include Agency staff unless stated.

OPCC figures do not include the PCC / DPCC. The total number of actual Staff has decreased by 2.78 FTE from the previous month.

No agency staffs are in supernumerary posts.

14.15 x agency staff are backfill or interim postings against established posts (includes part time agency staff).

HR OVERVIEW

	Apr-19	May-19	Jun-19	Jul-19	Aug-19	Sep-19	Oct-19	Nov-19	Dec-19	Jan-20	Feb-20	Mar-20	Apr-20
Total Budget of all Officers, PCSO and Staff	2722.5												
Total Actual Number of all Officers, PCSO and Staff	2657.38	2646.39	2642.17	2669.50	2650.84	2625.22	2632.82	2670.38	2683.78	2671.40			

Citizens in Policing

Citizens in Policing	Apr-19	May-19	Jun-19	Jul-19	Aug-19	Sep-19	Oct-19	Nov-19	Dec-19	Jan-20	Feb-20	Mar-20	Apr-20
Specials long-term FTE Target	286.00												
Actual Specials FTE	114.00	125.00	122.00	117.00	110.00	109.00	104.00	110.00	105.00	105.00			
Actual Volunteers (including Police Cadets)	331.00	331.00	308.00	308.00	308.00	296.00	295.00	302.00	303.00	303.00			

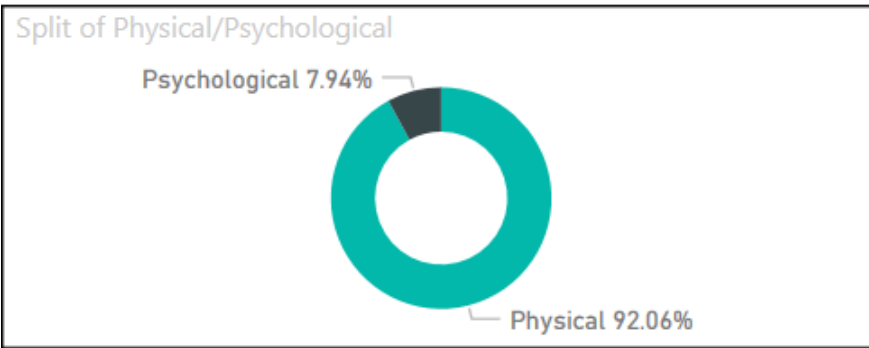
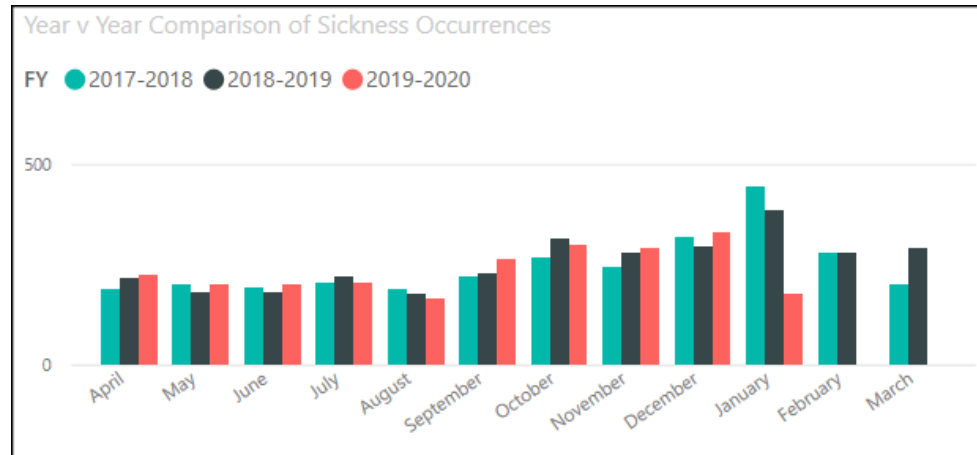
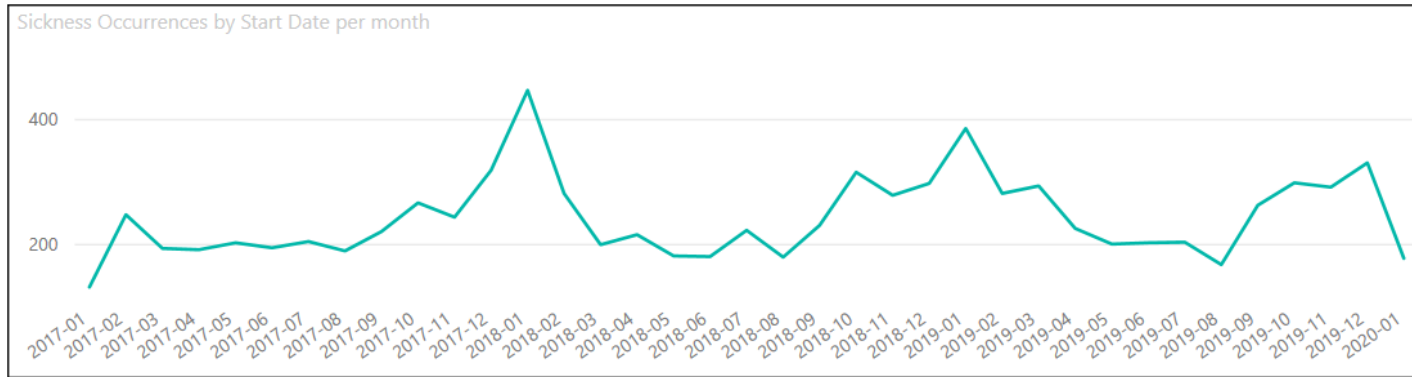
The actual number of Special Constables remains as the previous month.

We currently have 303 volunteers in the following roles;

- Volunteer Advisors
- Front Counter Support
- Safer Neighbourhood Support
- Rural Watch Patrol
- Tape and information facilitator
- Police Cadets
- Police Cadet Leaders
- PSV Driver
- Neighbourhood Support Volunteer
- Vehicle Checker

HR OVERVIEW

Sickness Data



Current initiatives

- Launch of e series platforms and on line toolkits to support 24/7 access and enhanced self-service options for individuals, managers and leaders.
- Enhancements to policies, procedures and guidance to reduce bureaucracy and ensure they are efficient and effective as possible.
- Targeted action and review of our long term sickness cases.
- Continued support and delivery of our Well-being approach and Well-being passports

Absence – National vs NYP

(days lost on average per employee as at 31st March 2019)

