



**NORTH YORKSHIRE
FIRE & RESCUE SERVICE**

Online Public Meeting - NYFRS

Right People, Right Support in Rural Areas

November 2023

Area Manager Ben Illsley

Area Manager Tom Hirst

www.northyorksfire.gov.uk

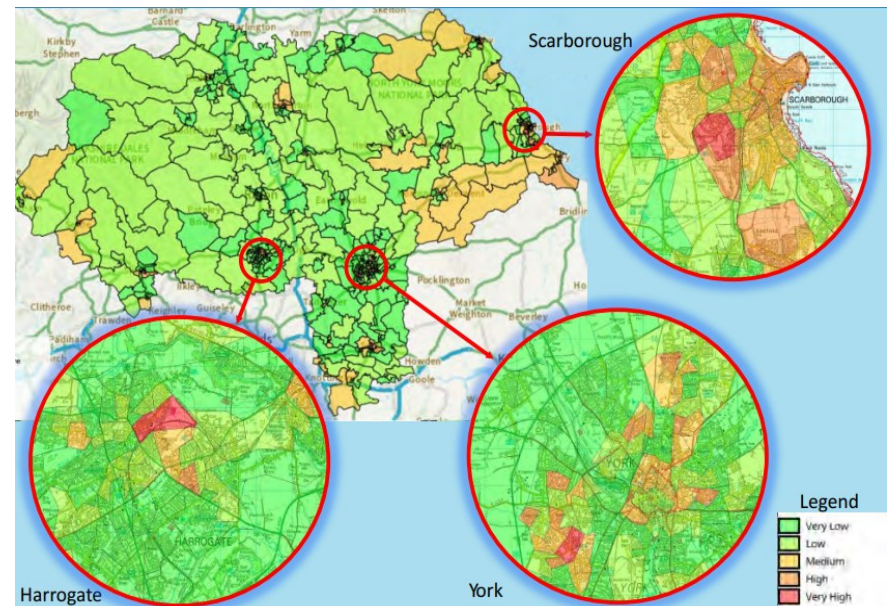


**NORTH YORKSHIRE
FIRE & RESCUE SERVICE**

Emergency Response

Community Risk Management Planning Process

- Community Risk Management Planning (*referred to as **RRM** in NYFRS currently)
- Data and Business Intelligence
- Public and stakeholder engagement
- Identification of key community risks
- Identification of risk areas
- Allocate resources aligned to risk





**NORTH YORKSHIRE
FIRE & RESCUE SERVICE**

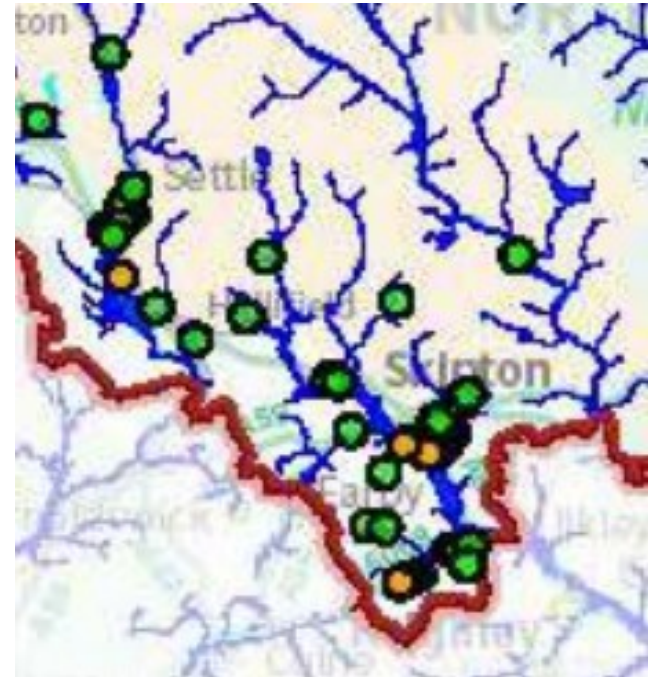
Water Rescue Example

Risk Identification

- Data from historical incidents was assessed as part of the 2022 Community Risk Profile
- Water was identified as one of the three primary risks for NYFRS
- Data and risk mapping showed which areas are most likely to be flooded

Resource to Risk

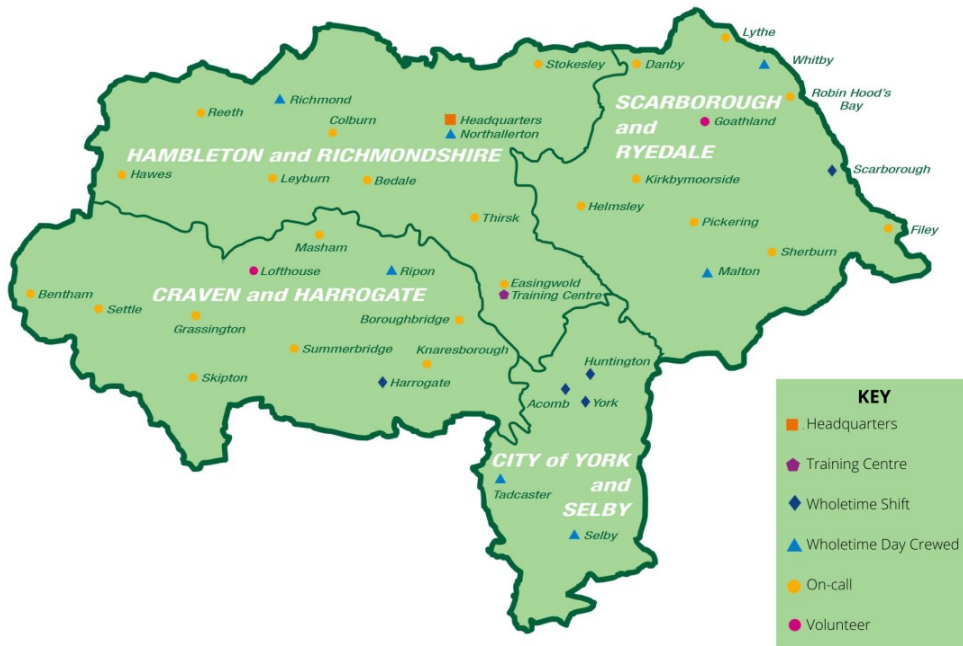
- Increase of water rescue asset in the Craven area at Skipton





**NORTH YORKSHIRE
FIRE & RESCUE SERVICE**

Fire Cover In Rural Areas



Service Area

- NYFRS covers a service area of over 3,200 square miles, which is the second largest in the country
- To cover the large geographical area within budget, NYFRS adopts a predominantly On-call fire cover model, with 31 on-call appliances
- Changes made in the 2022-25 RRM to support the future of the on-call fire cover model in NYFRS



**NORTH YORKSHIRE
FIRE & RESCUE SERVICE**

On Call Futures

National Challenge

- The sustainability of the On-call model is a national challenge in the UK. Since 2011 there has been a 25% reduction in on-call firefighters nationally (ONS figures)

NYFRS On-call Futures

- Targeted recruitment campaigns
- Development of On-call impact assessments
- New national working groups
- Widest possible pool
- Potential incentives for On-call availability
- Employee and employer recognition schemes



Wildfire Risk and Response



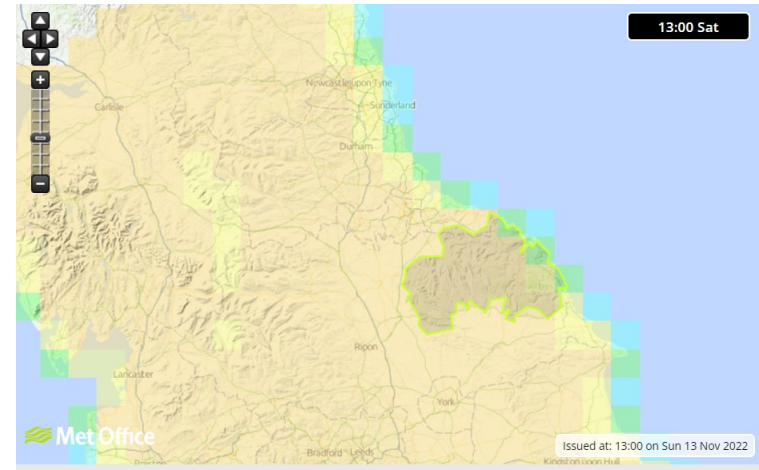
**NORTH YORKSHIRE
FIRE & RESCUE SERVICE**

Growing Risk

- Data is showing increases in the number and severity of wildfires across the United Kingdom
- Heightened risk in rural areas

Resource to Risk

- Training for crews and specialists
- Specialist assets
- Specialist equipment





**NORTH YORKSHIRE
FIRE & RESCUE SERVICE**

Prevention In Rural Areas

Within our Community Risk Profile we have focussed on three priority areas that present the greatest threat/harm to life from a fire and rescue perspective in North Yorkshire.

- Accidental dwelling fire risk and fatality/injury risk
- Road risk and fatality/serious injury risk
- Water risk; flooding, rescues and other water related risk.



Meeting the needs of the RRM & FRP in relation to Prevention, Early Intervention and Community Resilience in our Rural Areas.



**NORTH YORKSHIRE
FIRE & RESCUE SERVICE**

Introducing a sustainable structure to be able to deliver our Prevention and Protection Activities which will see

- Increasing use of our On-call staff to deliver prevention activity in our more rural areas (RRM)
- Provide more even access to prevention services across the county and more targeted delivery (RRM)
- Expanding the use of Safe and Well visits and fire safety audits to protect the vulnerable in our communities, especially in our rural communities where public services are less concentrated. (FRP)
- Increase in prevention work carried out in rural areas, especially in those areas over 15 minutes response time away from their nearest station (FRP)

Accidental dwelling fire risk



**NORTH YORKSHIRE
FIRE & RESCUE SERVICE**

- Updated Safe & Well Policy and Accompanying Booklet which aligned to the National Fire Chiefs Council guidance for person centred approach.
- Introduced NFCC Safelincs for a risk based standardised access route for Safe & Well requests into service for both partnership and individual referrals.
- Provided Safe & Well Training for both Wholetime and On-Call members of staff.
- Through the RRM changes we are putting the resource and funding into place to allow On Call the ability to undertake increased Safe & Well within their areas.
- Have more confident and competent Wholetime and On Call members of staff with the delivery of Safe & Well will free the capacity for the Community Safety officers to increase their focus on the most vulnerable to Domestic Dwelling Fire furthest away from our Emergency Response.

Map of Safe & Well Activity in 2023 undertaken by our On-call Crew.



**NORTH YORKSHIRE
FIRE & RESCUE SERVICE**



Since January 2023, On-call Stations have undertaken 269 Safe & Well activities.

This is an increase on 163 which were completed by On-call in the whole of 2022.



**NORTH YORKSHIRE
FIRE & RESCUE SERVICE**

Road Safety

- Road Safety Partnership
- Fire Bike
- Biker Down programme.
- Actions Have Consequences
- Dark Nights
- Targeted Engagement & Education activities



Water



**NORTH YORKSHIRE
FIRE & RESCUE SERVICE**

- Series of Water Prevention Activities
- Engagement Activities in known risk areas within North Yorkshire.
- Water Hazard Demonstrator (flume)
- Water Safety Presentation for KS3 National Drowning Prevention Strategy.



Farm Safety



**NORTH YORKSHIRE
FIRE & RESCUE SERVICE**

- Educational Package covering all areas of Farm Safety.
- Farm Fire Safety Visits
- Engagements with the Young Farmers Association
- Working in conjunction with Rural Policing Team
- Our Farm Fire Safety advice featured in industry newsletters
- Building resilience through educational advice and guidance especially around harvest period.
- Early weather warnings, to help protect livestock from potential flooding.



Wildfire



**NORTH YORKSHIRE
FIRE & RESCUE SERVICE**

- Series of targeted campaigns and engagements.
- Utilising joint patrols in known risk areas at peak times.
- Social Media Campaigns
- Youth Education Activities during summer holiday periods.





**NORTH YORKSHIRE
FIRE & RESCUE SERVICE**

Public Safety Service

Public Safety Officers

- Provide Multi Disciplined Early Intervention and Prevention Activities in the Rural Areas of Craven.
- Prevent vulnerability to reduce harm, improving the resilience of communities in the most rural areas
- Social Value Return.
- Independently and Peer reviewed
- Aligned to the NPT areas and shift systems
- Community First Responders.

